

ON-BOARD DIAGNOSTICS SYSTEM

AUTOMATIC TRANSMISSION

14. On-board Diagnostics System

A: FUNCTION

The on-board diagnostics system detects and stores in the form of a code a fault that has occurred in any of the following input and output signal systems.

Rear vehicle speed sensor	Transfer duty solenoid	Low-clutch timing solenoid
Front vehicle speed sensor	ATF temperature sensor	Torque converter turbine speed sensor
Throttle position sensor	Engine speed signal circuit	—
Shift solenoid 1	Line pressure duty solenoid	—
Shift solenoid 2	AT load signal circuit	—
2-4 brake timing solenoid	Torque control signal circuit	—
Lockup duty solenoid	2-4 brake duty solenoid	—

If a fault has been detected, the system tells the fault by causing the AT OIL TEMP warning light to operate as follows:

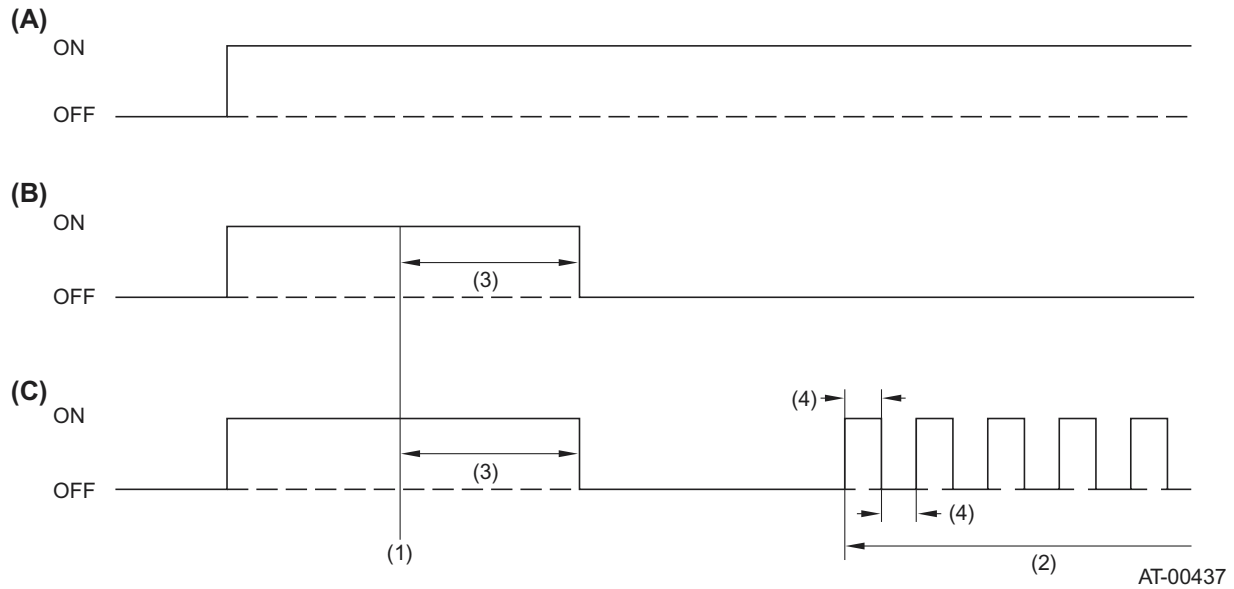
- Repeated flashing at 4 Hz frequency ...Errors such as battery trouble
- Repeated flashing at 2 Hz frequency ...No faults in the system
- Flashing at different intervals and frequencies ...Diagnostic trouble codes of corresponding faults
- Continued illumination of light ...Fault in inhibitor switch, idle switch, or wiring

ON-BOARD DIAGNOSTICS SYSTEM

AUTOMATIC TRANSMISSION

B: OPERATION OF AT OIL TEMP WARNING LIGHT

On starting the engine, the AT OIL TEMP warning light illuminates and then goes out as shown in the Normal diagram below. If any problem exists, the light continues flashing as shown in the Abnormal diagram below.



AT-00437

- (A) Ignition switch ON (engine OFF)
- (B) Normal
- (C) Abnormal

- (1) Engine cranking
- (2) Blink
- (3) 2 seconds
- (4) 0.3 seconds