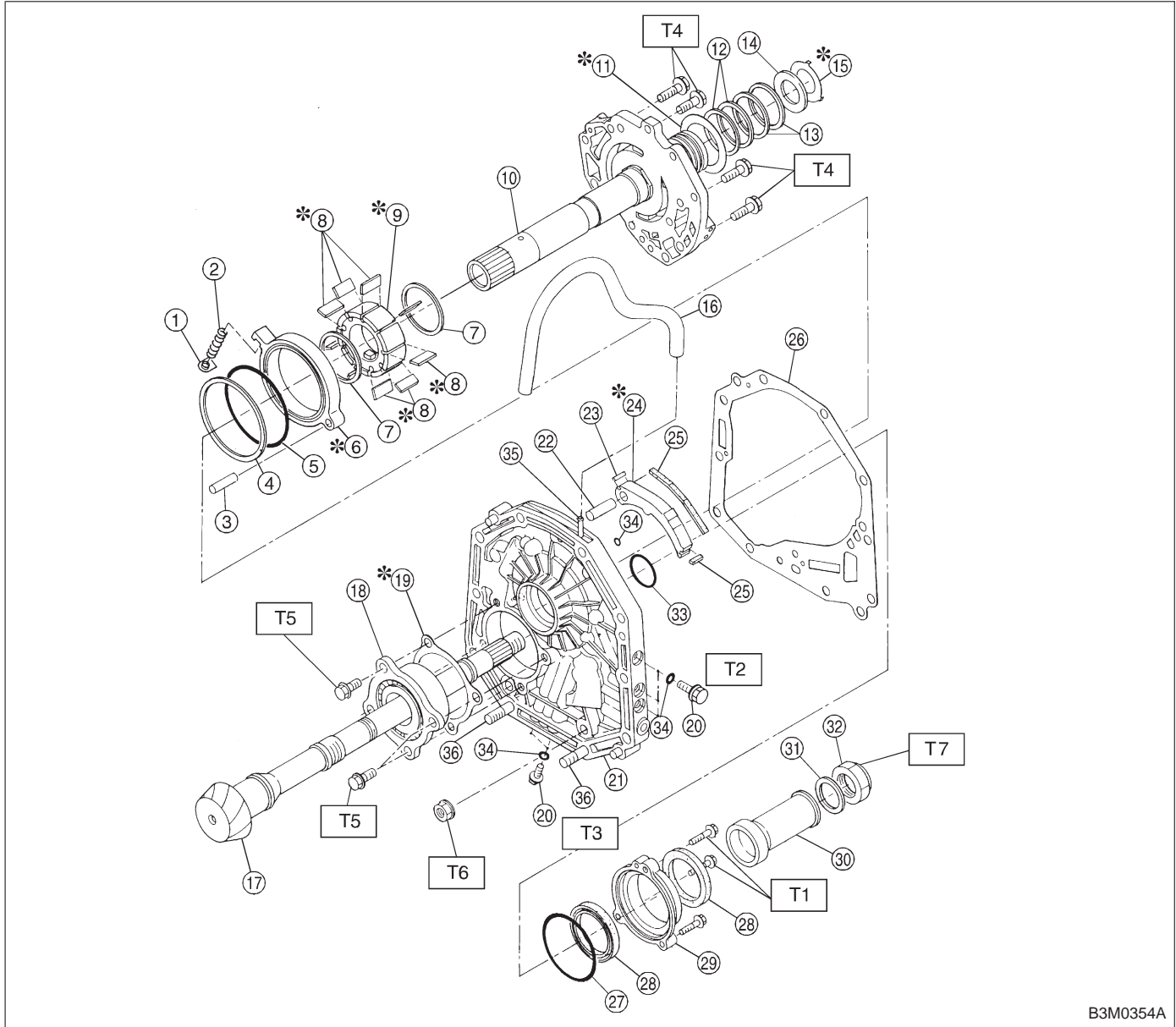


3. Oil Pump



- ① Retainer
- ② Return spring
- ③ Pin
- ④ Friction ring
- ⑤ O-ring
- ⑥ Cam ring
- ⑦ Vane ring
- ⑧ Vane
- ⑨ Rotor
- ⑩ Oil pump cover
- ⑪ Thrust washer
- ⑫ Seal ring (R)
- ⑬ Seal ring (H)
- ⑭ Thrust needle bearing
- ⑮ Thrust washer

- ⑯ Air breather hose
- ⑰ Drive pinion shaft
- ⑱ Roller bearing
- ⑲ Shim
- ⑳ Test plug
- ㉑ Oil pump housing
- ㉒ Pin
- ㉓ Side seal
- ㉔ Control piston
- ㉕ Plane seal
- ㉖ Gasket
- ㉗ O-ring
- ㉘ Oil seal
- ㉙ Oil seal retainer
- ㉚ Drive pinion collar

- ⑳ Lock washer
- ㉑ Lock nut
- ㉒ O-ring
- ㉓ O-ring
- ㉔ Nipple
- ㉕ Stud bolt

**Tightening torque: N·m (kg·m, ft·lb)**

- T1: 7±1 (0.7±0.1, 5.1±0.7)**
- T2: 13±1 (1.3±0.1, 9.4±0.7)**
- T3: 18±5 (1.8±0.5, 13.0±3.6)**
- T4: 25±2 (2.5±0.2, 18.1±1.4)**
- T5: 39±3 (4.0±0.3, 28.9±2.2)**
- T6: 41±3 (4.2±0.3, 30.4±2.2)**
- T7: 113±5 (11.5±0.5, 83.2±3.6)**