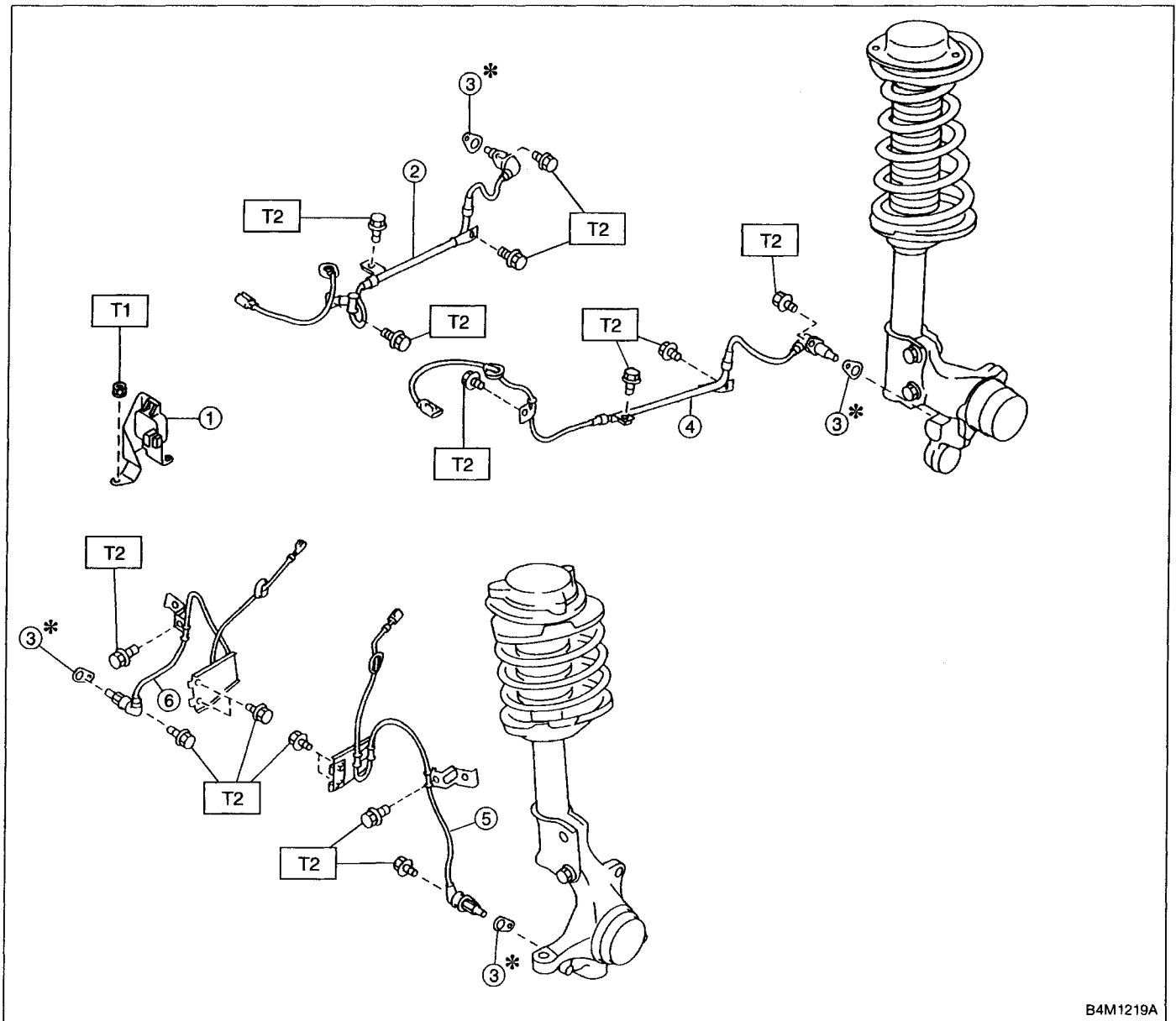


10. ABS System (ABS 5.3i Type)

1. SENSOR



B4M1219A

- ① G sensor (AWD only)
- ② Rear ABS sensor RH
- ③ ABS spacer

- ④ Rear ABS sensor LH
- ⑤ Front ABS sensor LH
- ⑥ Front ABS sensor RH

**Tightening torque: N·m (kg·m, ft·lb)**  
**T1: 7.4 ± 2.0 (0.75 ± 0.2, 5.4 ± 1.4)**  
**T2: 32 ± 10 (3.3 ± 1.0, 24 ± 7)**

<b>S SPECIFICATIONS AND SERVICE DATA</b>	
1. Brakes	
<b>C COMPONENT PARTS</b> .....	2
1. Front Disc Brake	
2. Rear Disc Brake	
3. Rear Drum Brake	
4. Master Cylinder	
5. Brake Booster	
6. ABS System	
7. Hill Holder	
8. Parking (Hand) Brake	
9. ABS/TCS System	
10. ABS System (ABS 5.3i Type) .....	2
<b>W SERVICE PROCEDURE</b> .....	4
1. Front Disc Brake	
2. Rear Disc Brake	
3. Rear Drum Brake	
4. Parking Brake (Rear Disc Brake)	
5. Master Cylinder	
6. Brake Booster	
7. Brake Hose	
8. Hill Holder	
9. Parking Brake Lever	
10. Parking Brake Cable	
11. Air Bleeding (Without TCS model)	
12. Brake Fluid Replacement	
13. Proportioning Valve	
14. ABS Sensor	
15. Hydraulic Unit for ABS System	
16. ABS Control Module	
17. G Sensor for ABS System	
18. Brake Hose and Pipe <b>AIRBAG</b> .....	4
19. Air Bleeding (With TCS model)	
20. Hydraulic Unit for ABS/TCS System	
21. ABS/TCS Control Module	
22. Hydraulic Unit for ABS System (ABS 5.3 Type)	
23. ABS Control Module (ABS 5.3 Type)	
24. G Sensor for ABS System (ABS 5.3 Type)	
25. ABS Control Module and Hydraulic Control Unit (ABSCM&H/U) [ABS 5.3i Type] .....	6
26. ABS Sensor (ABS 5.3i Type) .....	15
27. G Sensor (ABS 5.3i Type) .....	15
<b>K DIAGNOSTICS</b>	
1. Entire Brake System	
2. Hill Holder	

**PRECAUTION FOR SUPPLEMENTAL RESTRAINT SYSTEM "AIRBAG"**

The Supplemental Restraint System "Airbag" helps to reduce the risk or severity of injury to the driver in a frontal collision.

The Supplemental Restraint System consists of an airbag module (located in the center of the steering wheel), sensors, a control module, warning light, wiring harness and roll connector.

Information necessary to service the safety is included in the "5-5. SUPPLEMENTAL RESTRAINT SYSTEM" of this Service Manual.

**WARNING:**

- To avoid rendering the Airbag system inoperative, which could lead to personal injury or death in the event of a severe frontal collision, all maintenance must be performed by an authorized SUBARU dealer.
- Improper maintenance, including incorrect removal and installation of the Airbag system, can lead to personal injury caused by unintentional activation of the Airbag system.
- All Airbag system electrical wiring harnesses and connectors are covered with yellow outer insulation. Do not use electrical test equipment on any circuit related to the Supplemental Restraint System "Airbag".

## TABLE OF CONTENTS

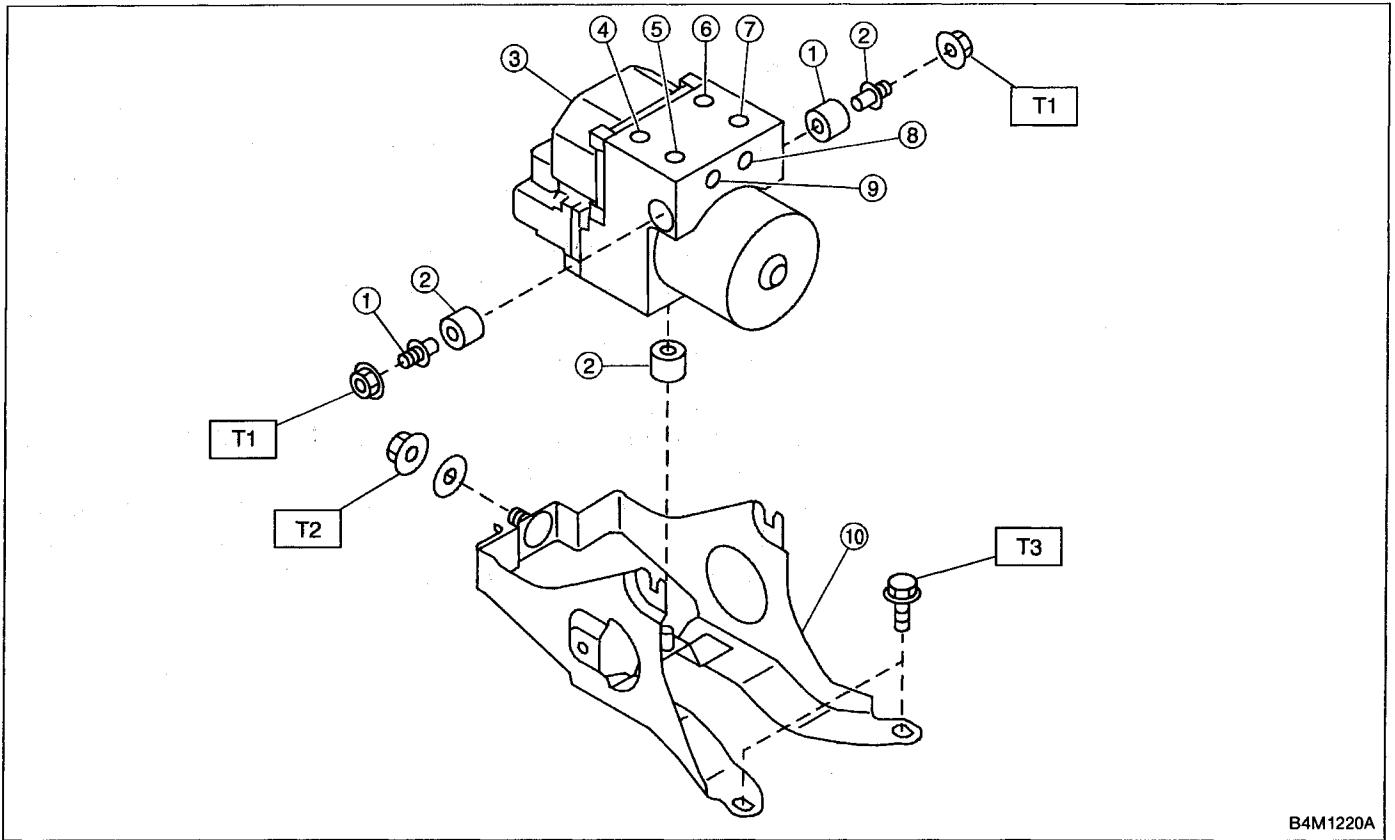
<b>ENGINE SECTION</b>	2-1	★★★★★★★★★★★★
	2-2	★★★★★★★★★★★★
	2-3	★★★★★★★★★★★★
	2-3b	★★★★★★★★★★★★
	2-4	★★★★★★★★★★★★
	2-5	★★★★★★★★★★★★
	2-6	★★★★★★★★★★★★
	2-7	★★★★★★★★★★★★
	2-8	★★★★★★★★★★★★
	2-9	★★★★★★★★★★★★
	2-10	★★★★★★★★★★★★
2-11	★★★★★★★★★★★★	
<b>TRANSMISSION AND DIFFERENTIAL SECTION</b>	3-1	★★★★★★★★★★★★
	3-2	★★★★★★★★★★★★
	3-3	★★★★★★★★★★★★
	3-4	★★★★★★★★★★★★
<b>MECHANICAL COMPONENTS SECTION</b>	4-1	★★★★★★★★★★★★
	4-2	★★★★★★★★★★★★
	4-3	★★★★★★★★★★★★
	4-4	<b>Brakes</b>
	4-5	★★★★★★★★★★★★
	4-6	★★★★★★★★★★★★
	4-7	★★★★★★★★★★★★
<b>BODY SECTION</b>	5-1	★★★★★★★★★★★★
	5-2	★★★★★★★★★★★★
	5-3	★★★★★★★★★★★★
	5-4	★★★★★★★★★★★★
	5-5	★★★★★★★★★★★★
	5-5b	★★★★★★★★★★★★
<b>ELECTRICAL SECTION</b>	6-1	★★★★★★★★★★★★
	6-2	★★★★★★★★★★★★

All right reserved. This book may not be reproduced or copied, in whole or in part, without the written permission of FUJI HEAVY INDUSTRIES LTD., TOKYO JAPAN.

SUBARU,  and  are trademarks of FUJI HEAVY INDUSTRIES LTD.

© Copyright 1996 FUJI HEAVY INDUSTRIES LTD.

2. ABS CONTROL MODULE AND HYDRAULIC CONTROL UNIT (ABSCM&H/U)



B4M1220A

- |   |                   |
|---|-------------------|
| ① Stud bolt                                     | ⑥ Front-RH outlet |
| ② Damper  | ⑦ Primary inlet   |
| ③ ABS control module and hydraulic control unit | ⑧ Rear-LH outlet  |
| ④ Front-LH outlet                               | ⑨ Rear-RH outlet  |
| ⑤ Secondary inlet                               | ⑩ Bracket         |

---

**Tightening torque: N·m (kg·m, ft·lb)**  
**T1: 18 ± 5 (1.8 ± 0.5, 13.0 ± 3.6)**  
**T2: 29 ± 7 (3.0 ± 0.7, 21.7 ± 5.1)**  
**T3: 32 ± 10 (3.3 ± 1.0, 24 ± 7)**

---