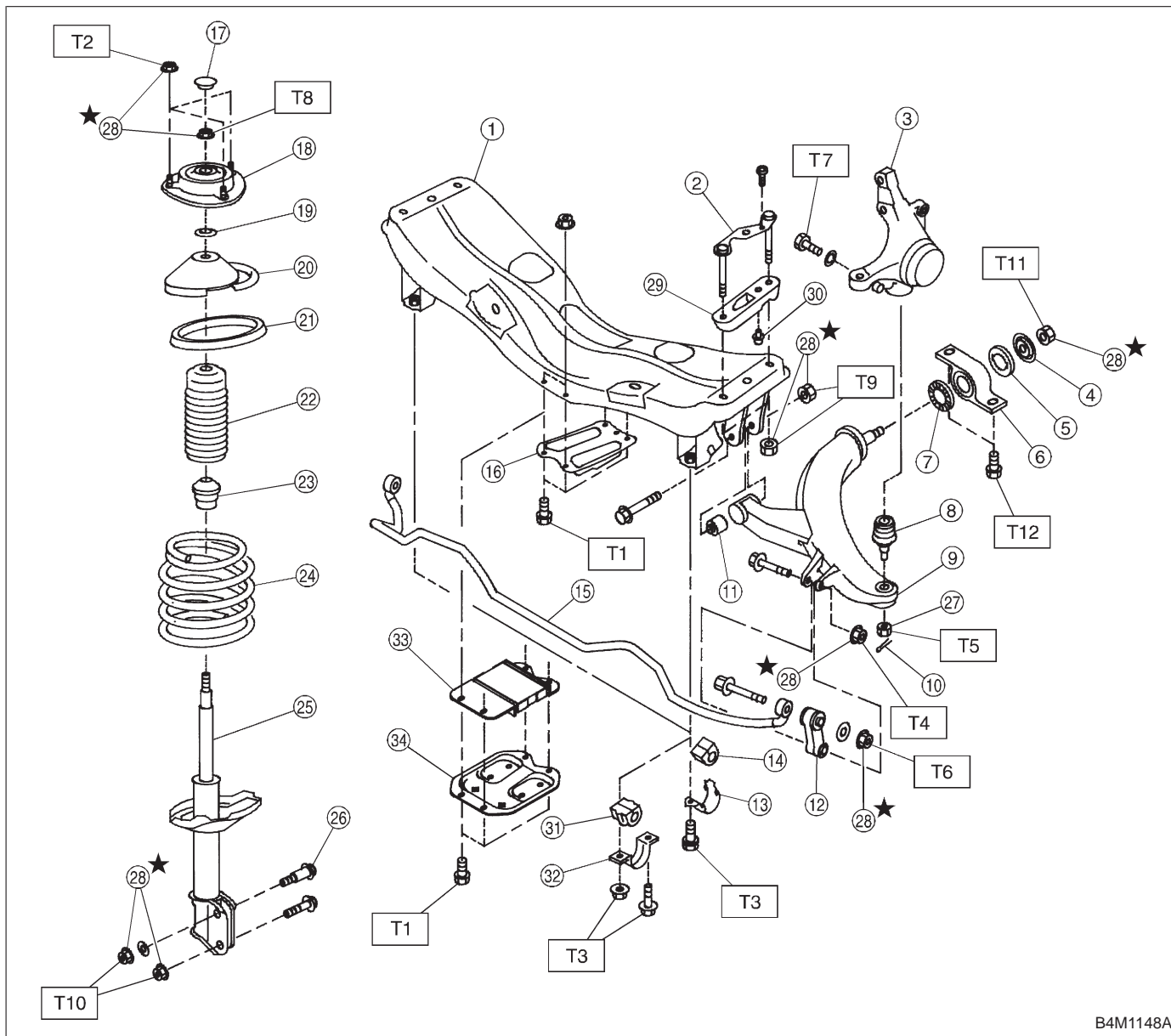


1. Conventional Suspension

1. FRONT SUSPENSION



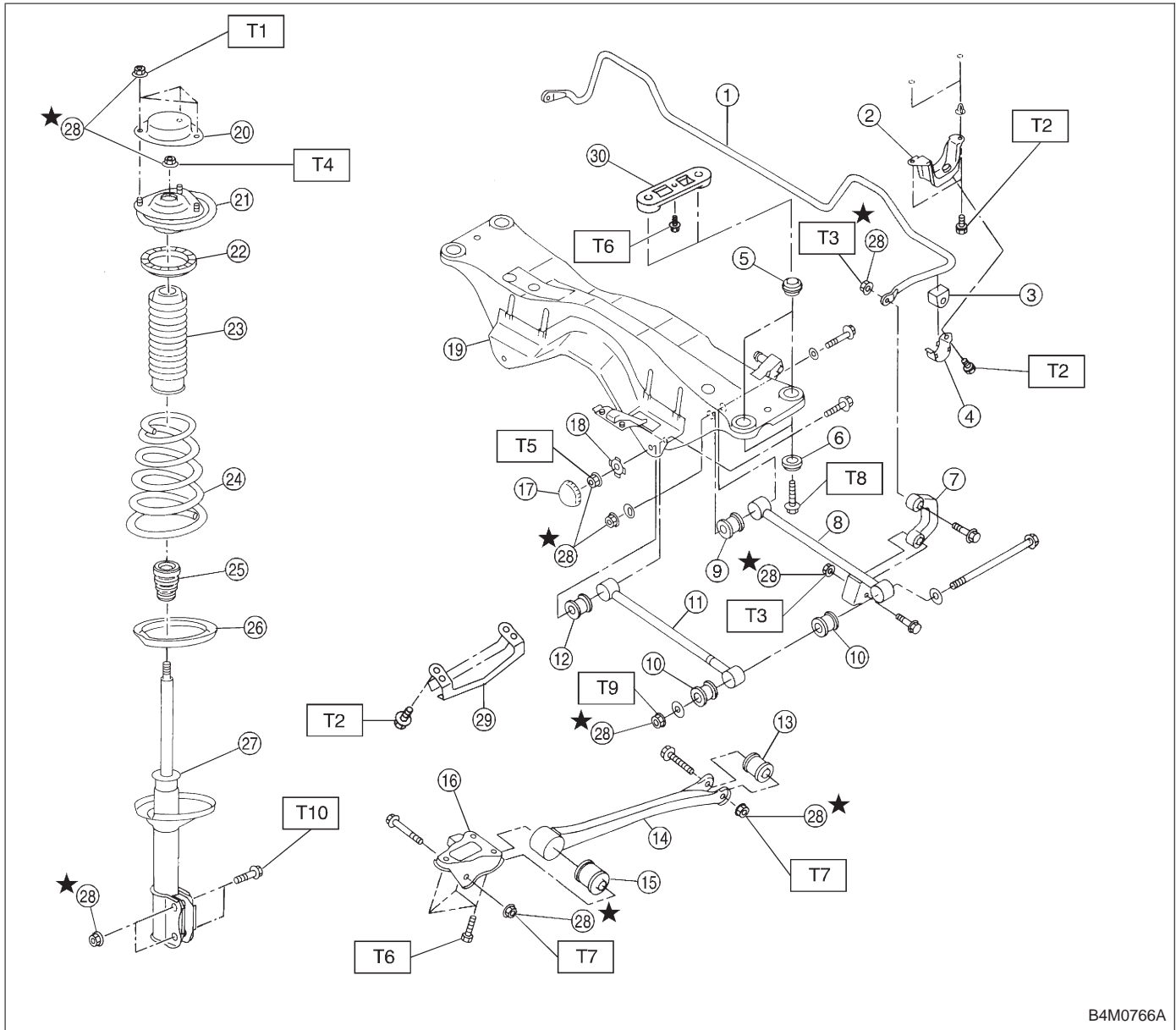
B4M1148A

- | | |
|--|---|
| <ul style="list-style-type: none"> ① Front crossmember ② Bolt ASSY ③ Housing ④ Washer ⑤ Stopper rubber (Rear) ⑥ Rear bushing ⑦ Stopper rubber (Front) ⑧ Ball joint ⑨ Transverse link ⑩ Cotter pin ⑪ Front bushing ⑫ Stabilizer link ⑬ Clamp (2200 cc model) ⑭ Bushing (2200 cc model) ⑮ Stabilizer ⑯ Jack-up plate (Except 2500 cc MT model) ⑰ Dust seal ⑱ Strut mount ⑲ Spacer | <ul style="list-style-type: none"> ⑳ Upper spring seat ㉑ Rubber seat ㉒ Dust cover ㉓ Helper ㉔ Coil spring ㉕ Damper strut ㉖ Adjusting bolt ㉗ Castle nut ㉘ Self-locking nut ㉙ Adapter front crossmember (OUTBACK model) ㉚ Clip (OUTBACK model) ㉛ Bushing (2500 cc model) ㉜ Clamp (2500 cc model) ㉝ Dynamic damper (2500 cc MT model) ㉞ Jack-up plate (2500 cc MT model) |
|--|---|

Tightening torque: N·m (kg·m, ft·lb)

- T1: 18±5 (1.8±0.5, 13.0±3.6)
- T2: 20±6 (2.0±0.6, 14.5±4.3)
- T3: 25±4 (2.5±0.4, 18.1±2.9)
- T4: 29±5 (3.0±0.5, 21.7±3.6)
- T5: 39 (4, 29)
- T6: 44±6 (4.5±0.6, 32.5±4.3)
- T7: 49±10 (5.0±1.0, 36±7)
- T8: 54±5 (5.5±0.5, 39.8±3.6)
- T9: 98±15 (10.0±1.5, 72±11)
- T10: 152±20 (15.5±2.0, 112±14)
- T11: 186±10 (19.0±1.0, 137±7)
- T12: 245±49 (25.0±5.0, 181±36)

2. REAR SUSPENSION (AWD MODEL)



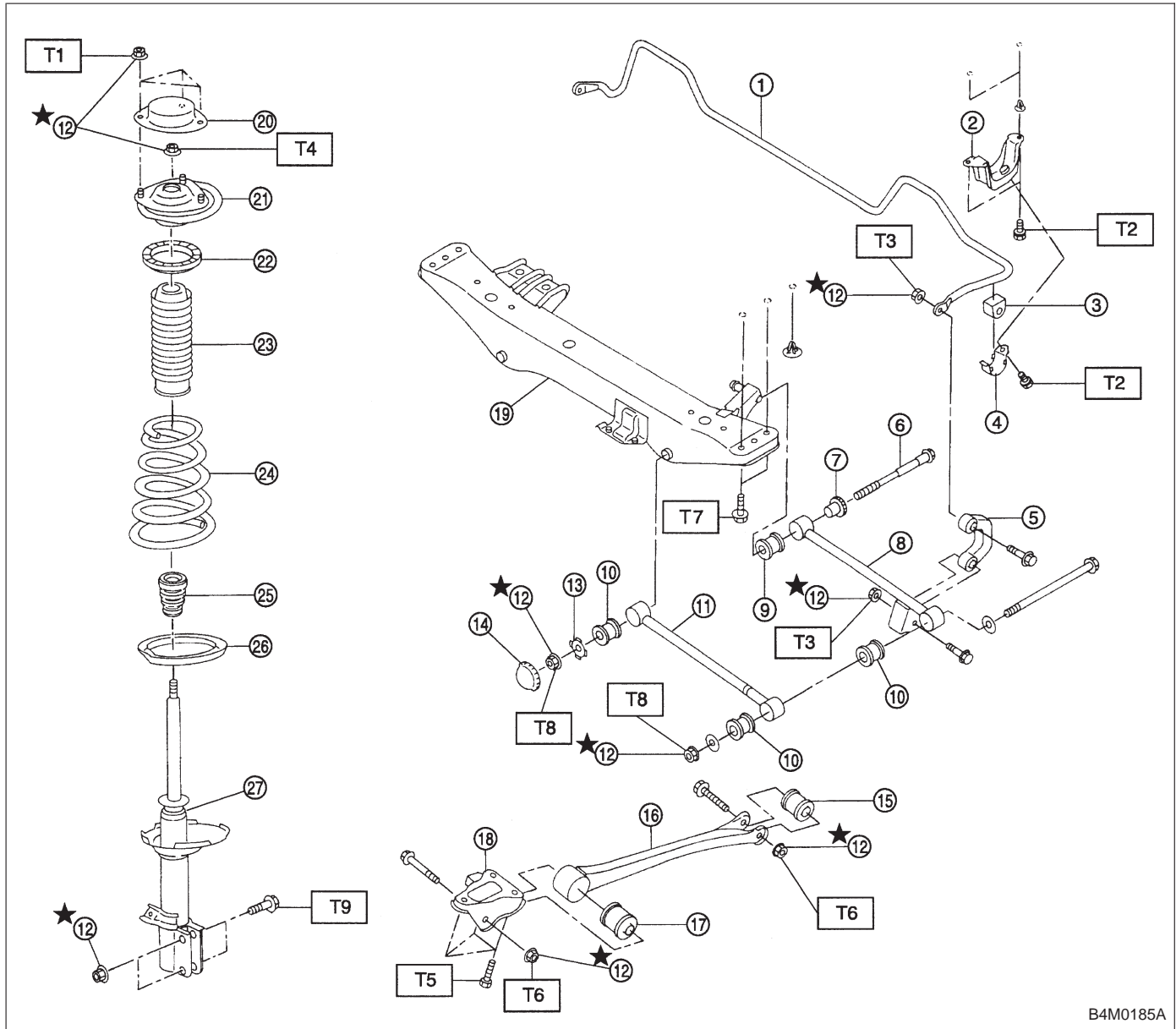
- ① Stabilizer
- ② Stabilizer bracket
- ③ Stabilizer bushing
- ④ Clamp
- ⑤ Floating bushing
- ⑥ Stopper
- ⑦ Stabilizer link
- ⑧ Rear lateral link
- ⑨ Bushing (C)
- ⑩ Bushing (A)
- ⑪ Front lateral link
- ⑫ Bushing (B)
- ⑬ Trailing link rear bushing
- ⑭ Trailing link
- ⑮ Trailing link front bushing

- ⑯ Trailing link bracket
- ⑰ Cap (Protection)
- ⑱ Washer
- ⑲ Rear crossmember
- ⑳ Strut mount cap
- ㉑ Strut mount
- ㉒ Rubber seat upper
- ㉓ Dust cover
- ㉔ Coil spring
- ㉕ Helper
- ㉖ Rubber seat lower
- ㉗ Damper strut
- ㉘ Self-locking nut
- ㉙ Crossmember reinforcement lower (Sedan model)
- ㉚ Adapter rear crossmember (OUT-BACK model)

Tightening torque: N·m (kg·m, ft·lb)

- T1: 20±6 (2.0±0.6, 14.5±4.3)
- T2: 25±7 (2.5±0.7, 18.1±5.1)
- T3: 44±6 (4.5±0.6, 32.5±4.3)
- T4: 59±10 (6.0±1.0, 43±7)
- T5: 98±15 (10.0±1.5, 72±11)
- T6: 98±20 (10.0±2.0, 72±14)
- T7: 113±15 (11.5±1.5, 83±11)
- T8: 127±20 (13.0±2.0, 94±14)
- T9: 137±20 (14.0±2.0, 101±14)
- T10: 196⁺³⁹₋₁₀ (20.0^{+4.0}_{-1.0}, 145⁺²⁹₋₇)

3. REAR SUSPENSION (FWD MODEL)



B4M0185A

- ① Stabilizer
- ② Stabilizer bracket
- ③ Stabilizer bushing
- ④ Clamp
- ⑤ Stabilizer link
- ⑥ Adjusting bolt
- ⑦ Adjusting wheel
- ⑧ Rear lateral link
- ⑨ Bushing (D)
- ⑩ Bushing (A)
- ⑪ Front lateral link
- ⑫ Self-locking nut
- ⑬ Washer
- ⑭ Cap (Protection)
- ⑮ Trailing link rear bushing
- ⑯ Trailing link
- ⑰ Trailing link front bushing
- ⑱ Trailing link bracket
- ⑲ Crossmember
- ⑳ Strut mount cap
- ㉑ Strut mount
- ㉒ Rubber seat upper
- ㉓ Dust cover
- ㉔ Coil spring
- ㉕ Helper
- ㉖ Rubber seat lower
- ㉗ Damper strut

Tightening torque: N·m (kg·m, ft·lb)

- T1: 20±6 (2.0±0.6, 14.5±4.3)
- T2: 25±7 (2.5±0.7, 18.1±5.1)
- T3: 44±6 (4.5±0.6, 32.5±4.3)
- T4: 59±10 (6.0±1.0, 43±7)
- T5: 98±20 (10.0±2.0, 72±14)
- T6: 113±15 (11.5±1.5, 83±11)
- T7: 127±20 (13.0±2.0, 94±14)
- T8: 137±20 (14.0±2.0, 101±14)
- T9: 196⁺³⁹₋₁₀ (20.0^{+4.0}_{-1.0}, 145⁺²⁹₋₇)