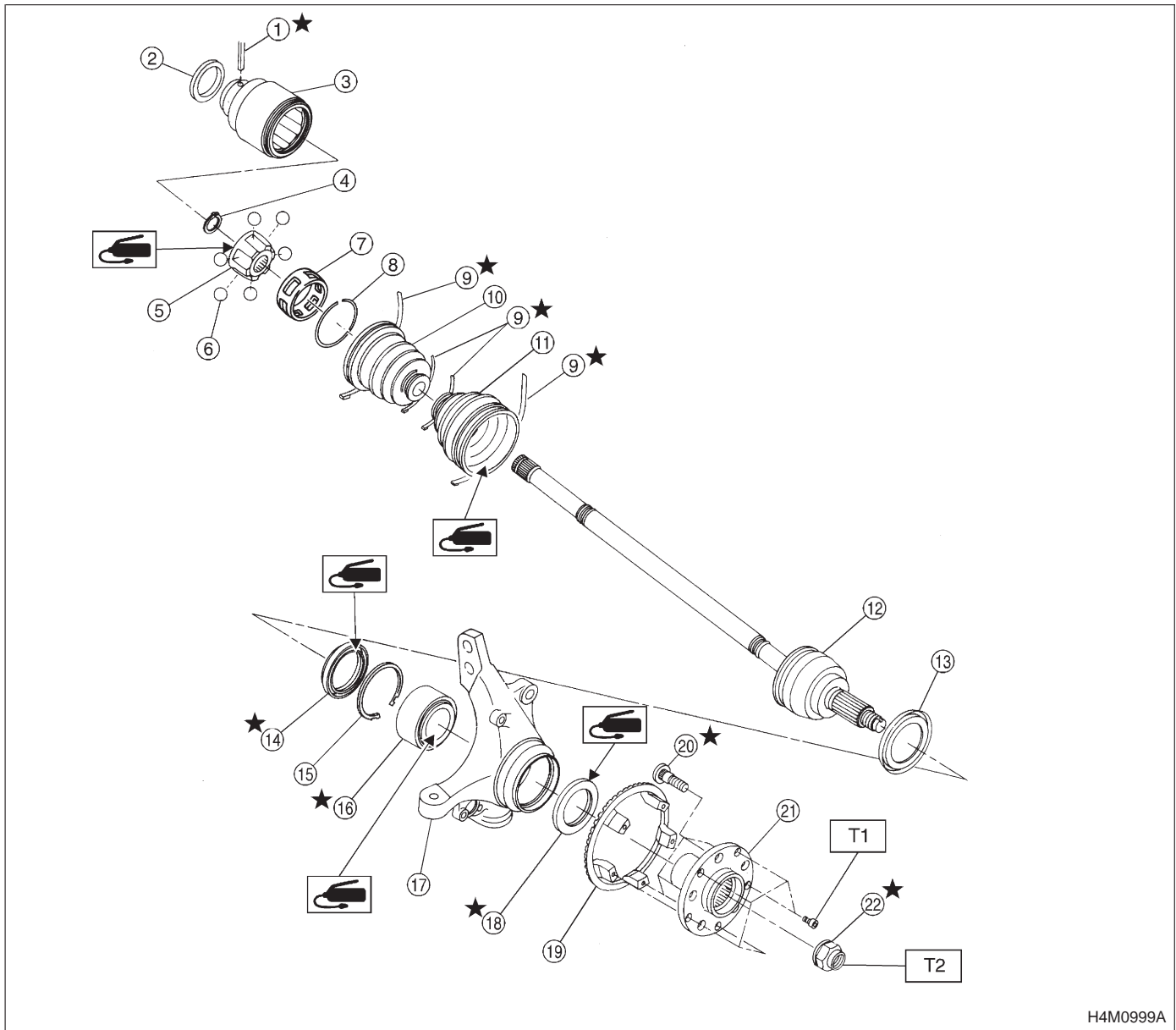


1. Front Axle

1. 2200 cc



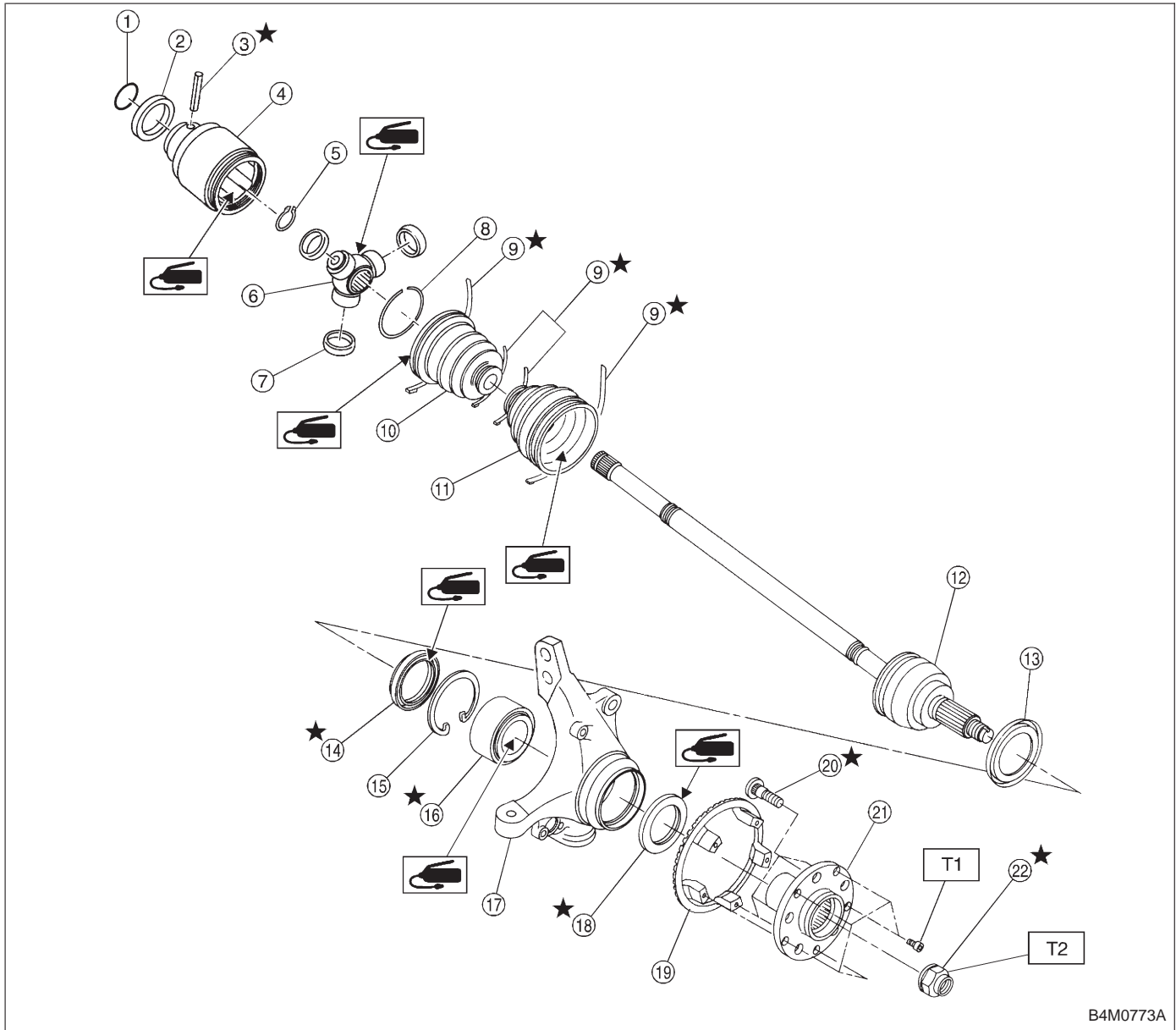
- ① Spring pin
- ② Baffle plate (DOJ)
- ③ Outer race (DOJ)
- ④ Snap ring
- ⑤ Inner race (DOJ)
- ⑥ Ball
- ⑦ Cage
- ⑧ Circlip
- ⑨ Boot band

- ⑩ Boot (DOJ)
- ⑪ Boot (UFJ)
- ⑫ UFJ ASSY
- ⑬ Baffle plate
- ⑭ Oil seal (IN)
- ⑮ Snap ring
- ⑯ Bearing
- ⑰ Housing
- ⑱ Oil seal (OUT)

- ⑲ Tone wheel
- ⑳ Hub bolt
- ㉑ Hub
- ㉒ Axle nut

**Tightening torque: N·m (kg·m, ft·lb)**  
**T1: 13±3 (1.3±0.3, 9.4±2.2)**  
**T2: 186±20 (19±2, 137±14)**

2. 2500 cc



- ① O-ring
- ② Baffle plate (FTJ)
- ③ Spring pin
- ④ Outer race (FTJ)
- ⑤ Snap ring
- ⑥ Trunnion
- ⑦ Free ring
- ⑧ Circlip
- ⑨ Boot band

- ⑩ Boot (FTJ)
- ⑪ Boot (BJ)
- ⑫ BJ ASSY
- ⑬ Baffle plate
- ⑭ Oil seal (IN)
- ⑮ Snap ring
- ⑯ Bearing
- ⑰ Housing
- ⑱ Oil seal (OUT)

- ⑲ Tone wheel
- ⑳ Hub bolt
- ㉑ Hub
- ㉒ Axle nut

**Tightening torque: N·m (kg·m, ft·lb)**  
**T1: 13±3 (1.3±0.3, 9.4±2.2)**  
**T2: 186±20 (19±2, 137±14)**