

Specifications

Specifications	11-2
<i>Dimensions</i>	11-2
<i>Engine</i>	11-3
<i>Electrical system</i>	11-3
<i>Capacities</i>	11-4
<i>Tires</i>	11-4
<i>Wheel alignment</i>	11-5
Fuses and circuits	11-6
<i>Fuse panel located under the dashboard</i>	11-6
<i>Fuse panel behind the instrument panel lower cover</i>	11-8
<i>Fuse panel located in the engine compartment</i>	11-9
Bulb chart	11-10
Vehicle identification	11-11

Specifications

These specifications are subject to change without notice.

Dimensions

Sedan (except SUS)

Overall length	181.5 in. (4,610 mm)
Overall width	67.5 in. (1,715 mm)
Overall height	55.3 in. (1,405 mm)* ¹ 55.7 in. (1,415 mm)* ²
Ground clearance	6.1 in. (155 mm)* ¹ 6.5 in. (165 mm)* ²
Front tread	57.5 in. (1,460 mm)
Rear tread	57.3 in. (1,455 mm)
Wheelbase	103.5 in. (2,630 mm)

Wagon (except OUTBACK)

Overall length	184.4 in. (4,685 mm)
Overall width	67.5 in. (1,715 mm)
Overall height	57.1 in. (1,450 mm)* ³ 57.5 in. (1,460 mm)* ⁴
Ground clearance	6.1 in. (155 mm)* ³ 6.5 in. (165 mm)* ⁴
Front tread	57.5 in. (1,460 mm)
Rear tread	57.3 in. (1,455 mm)* ⁵ 57.1 in. (1,450 mm)* ⁶
Wheelbase	103.5 in. (2,630 mm)

SUS

Overall length	182.5 in. (4,635 mm)
Overall width	67.5 in. (1,715 mm)
Overall height	57.9 in. (1,470 mm)
Ground clearance	7.3 in. (185 mm)
Front tread	57.3 in. (1,455 mm)
Rear tread	57.1 in. (1,450 mm)
Wheelbase	103.5 in. (2,630 mm)

OUTBACK

Overall length	185.8 in. (4,720 mm)
Overall width	67.5 in. (1,715 mm)
Overall height	61.2 in. (1,555 mm)
Ground clearance	7.3 in. (185 mm)
Front tread	57.3 in. (1,455 mm)
Rear tread	57.1 in. (1,450 mm)
Wheelbase	103.5 in. (2,630 mm)

- *1: Sedan except GT
- *2: Sedan GT
- *3: Wagon except GT
- *4: Wagon GT
- *5: AWD vehicles
- *6: FWD vehicles

Engine

2.5 Liter models

Engine model	EJ25D
Engine type	Horizontally opposed, liquid cooled 4 cylinder, 4 stroke gasoline engine
Engine displacement	149.9 cu in. (2,457 cc)
Bore	3.92 in. (99.5 mm)
Stroke	3.11 in. (79.0 mm)
Compression ratio	9.7 : 1
Firing order	1 - 3 - 2 - 4

2.2 Liter models

Engine model	EJ22E
Engine type	Horizontally opposed, liquid cooled 4 cylinder, 4 stroke gasoline engine
Engine displacement	135.0 cu in. (2,212 cc)
Bore	3.82 in. (96.9 mm)
Stroke	2.95 in. (75.0 mm)
Compression ratio	9.7 : 1
Firing order	1 - 3 - 2 - 4

Electrical system

Battery	
Reserve capacity	MT: 82 min., AT: 100 min.

- CONTINUED -

Cold cranking ampere	MT: 430 amp., AT: 490 amp.
Alternator	12V - 85A
Spark plugs	2.2 Liter models RC10YC4 (Champion) [Alternate] BKR6E-11 (NGK), K20PR-U11 (NIPPON DENSO)
	2.5 Liter models PFR5B-11 (NGK)
Spark plug gap	0.039 to 0.043 in. (1.0 to 1.1 mm)

Capacities

2.5 Liter models

Fuel tank	15.9 US gal (60 liter, 13.2 Imp gal)
Engine oil	4.7 US qt (4.5 liter, 3.9 Imp qt)
Transmission oil	3.7 US qt (3.5 liter, 3.1 Imp qt)
Automatic transmission fluid	10.0 US qt (9.5 liter, 8.4 Imp qt)
AT differential gear oil	1.3 US qt (1.2 liter, 1.1 Imp qt)
AWD rear differential gear oil	0.8 US qt (0.8 liter, 0.7 Imp qt)
Power steering fluid	0.7 US qt (0.7 liter, 0.6 Imp qt)
Engine coolant	6.3 US qt (6.0 liter, 5.3 Imp qt)

2.2 Liter models

Fuel tank	15.9 US gal (60 liter, 13.2 Imp gal)
Engine oil	4.2 US qt (4.0 liter, 3.5 Imp qt)
Transmission oil (AWD)	3.7 US qt (3.5 liter, 3.1 Imp qt)
(FWD)	3.5 US qt (3.3 liter, 2.9 Imp qt)
Automatic transmission fluid	8.3 US qt (7.9 liter, 7.0 Imp qt)
AT differential gear oil	1.3 US qt (1.2 liter, 1.1 Imp qt)
AWD rear differential gear oil	0.8 US qt (0.8 liter, 0.7 Imp qt)
Power steering fluid	0.7 US qt (0.7 liter, 0.6 Imp qt)
Engine coolant	6.2 US qt (5.8 liter, 5.2 Imp qt)

Tires

All models except OUTBACK and SUS

Type	Steel belted radial, Tubeless
Size	L+, Brighton, POST P185/70 R14 87S
	LS P195/60 R15 87H
	GT P205/55 R16 87H

	Temporary spare	T125/70D15*7, T135/70D16*8
Pressure	Front	32 psi (220 kPa, 2.2 kg/cm ²)
	Rear	30 psi (210 kPa, 2.1 kg/cm ²)
	Temporary spare	60 psi (420 kPa, 4.2 kg/cm ²)
Wheel size	L ⁺ , Brighton, POST	14 x 5 ¹ / ₂ JJ
	LS	15 x 6JJ
	GT	16 x 6 ¹ / ₂ JJ

OUTBACK and SUS

Type		Steel belted radial, Tubeless
Size		P205/70 R15 95S
	Temporary spare	T135/80D16
Pressure	Front	29 psi (200 kPa, 2.0 kg/cm ²)
	Rear	28 psi (190 kPa, 1.9 kg/cm ²)
	Temporary spare	60 psi (420 kPa, 4.2 kg/cm ²)
Trailer towing	Front	29 psi (200 kPa, 2.0 kg/cm ²)
	Rear	32 psi (220 kPa, 2.2 kg/cm ²)
Wheel size		15 x 6JJ

*7: FWD vehicles

*8: AWD vehicles (except POST)

Wheel alignment

All models except OUTBACK and SUS

Toe	Front	0 ± 0.12 in. (0 ± 3 mm)
	Rear	0 ± 0.12 in. (0 ± 3 mm)
Camber	Front	-0° 5'
	Rear	-0°55'*9, -0°45'*10, -1°*11

OUTBACK and SUS

Toe	Front	0 ± 0.12 in. (0 ± 3 mm)
	Rear	0 ± 0.12 in. (0 ± 3 mm)
Camber	Front	0° 20'
	Rear	-0°35'

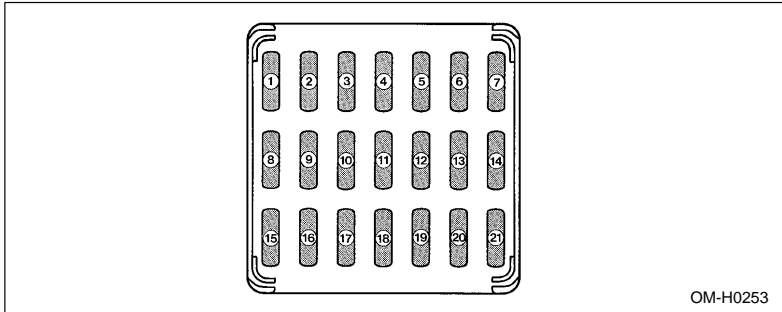
*9: FWD Sedan and AWD Wagon

*10: FWD Wagon

*11: AWD Sedan

Fuses and circuits

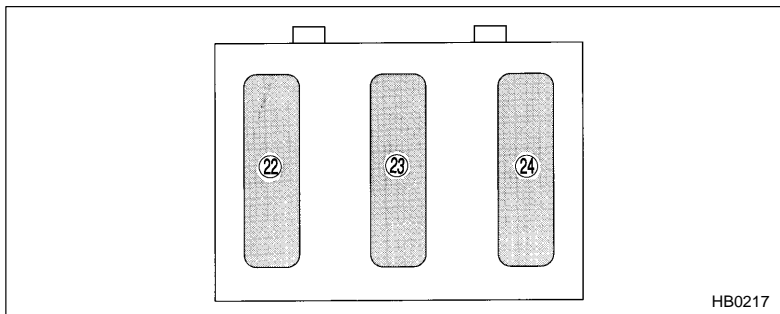
■ Fuse panel located under the dashboard



Fuse panel	Fuse rating	Circuit
1	15A	<ul style="list-style-type: none">● Back-up light● Turn signal light
2	20A	<ul style="list-style-type: none">● Windshield wiper and washer
3	20A	<ul style="list-style-type: none">● Cigarette lighter socket● Remote controlled rear view mirrors
4	Empty	
5	10A	<ul style="list-style-type: none">● Tail light (right side)
6	15A	<ul style="list-style-type: none">● Front fog light
7	20A	<ul style="list-style-type: none">● Rear window defogger
8	15A	<ul style="list-style-type: none">● SRS AIRBAG
9	10A	<ul style="list-style-type: none">● Illumination brightness control
10	Empty	

Fuse panel	Fuse rating	Circuit
11	20A	● Power door lock
12	20A	● Brake light ● Horn
13	20A	● Cooling fan
14	10A	● Automatic transmission control unit
15	10A	● Meter ● AIRBAG indicator light
16	15A	● Engine ignition system ● SRS AIRBAG
17	15A	● Radio
18	10A	● Cruise control ● ABS control
19	20A	● ABS solenoid
20	15A	● Heater fan
21	15A	● Heater fan

■ Fuse panel behind the instrument panel lower cover

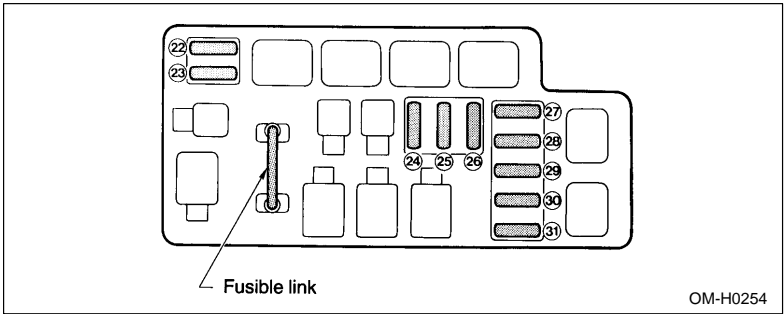


Fuse panel	Fuse rating	Circuit
22	15A* ¹ or 20A* ²	<ul style="list-style-type: none">● Accessory power socket● Seat heater
23	Empty	
24	Empty	

*1: For vehicle with either accessory power socket (in luggage compartment) or seat heater

*2: For vehicle with both seat heater and accessory power socket.

■ Fuse panel located in the engine compartment

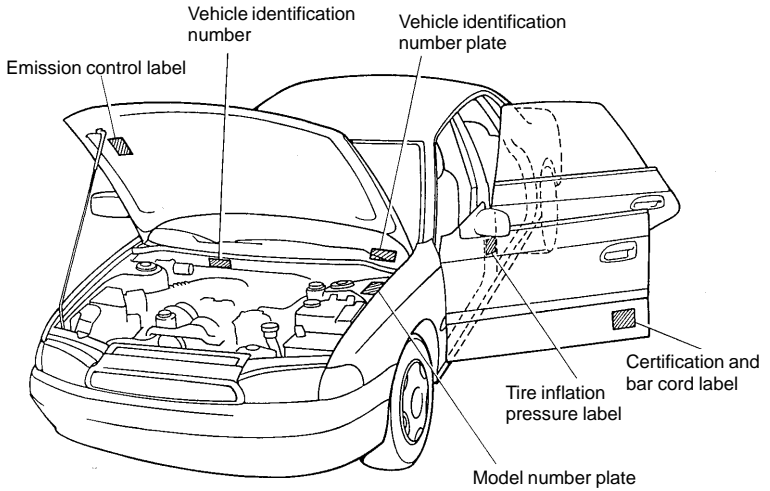


Fuse panel	Fuse rating	Circuit
25	20A	● Cooling fan
26	10A	● Air conditioner
27	Spare	(Not used)
28	Spare	(Not used)
29	Spare	(Not used)
30	15A	● Hazard warning flasher
31	20A	● Lighting switch
32	15A	● Headlight (left side)
33	15A	● Clock ● Interior light
34	15A	● Headlight (right side)

Bulb chart

Description	Wattage	Bulb No.
Spot light	12V-8W	—
Room light	12V-8W	—
Luggage area light	12V-13W	—
Step light	12V-3.4W	—
Front turn signal, parking light and front side marker light	12V-27/8W	1157
Fog light (GT)	12V-55W	H3
Fog light (OUTBACK and SUS)	12V-51W	9006
Headlight	12V-65/55W	9007 (HB5)
Brake/tail light	12V-27/8W	1157
Rear side marker light	12V-5W	168
Rear turn signal light	12V-27W	1156
Backup light	12V-27W	1156
High mount stop light (Sedan except GT models)	12V-18W	921
(Wagon)	12V-13W	912
License plate light	12V-3.8W or 5W	194 or 168

Vehicle identification



HB0288