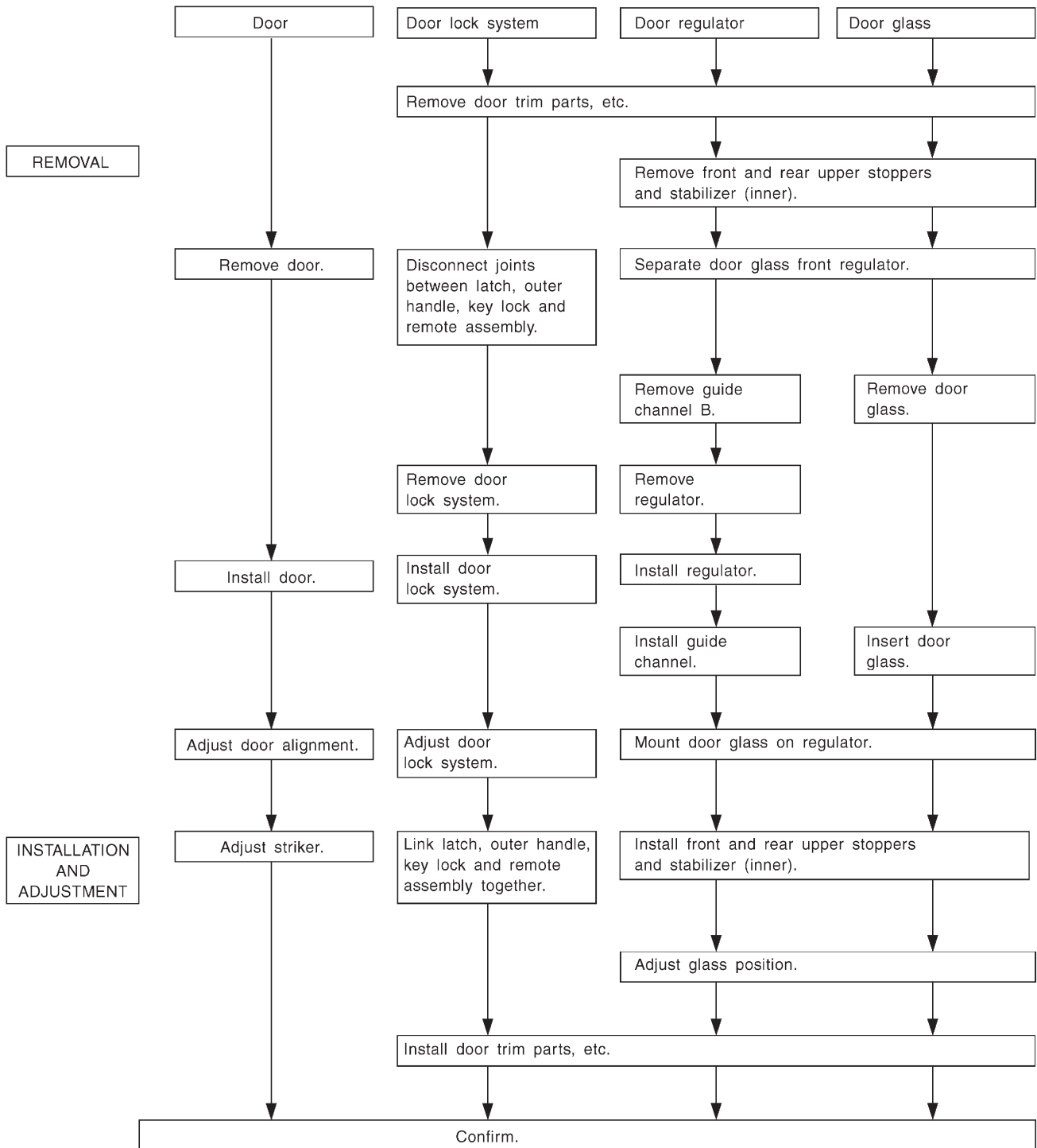


1. Procedure Chart for Removing and Installing Door and Related Parts

NOTE:

This flow chart shows the main procedures for removing and installing the door and its related parts. For details, refer to the text.



B5M0448A

2. Door

A: REMOVAL AND INSTALLATION

1. DOOR ASSEMBLY

1) Remove lower trim and disconnect connectors from body harness.

2) Place a cloth or a wood block under door to prevent damage, and support it with a jack.