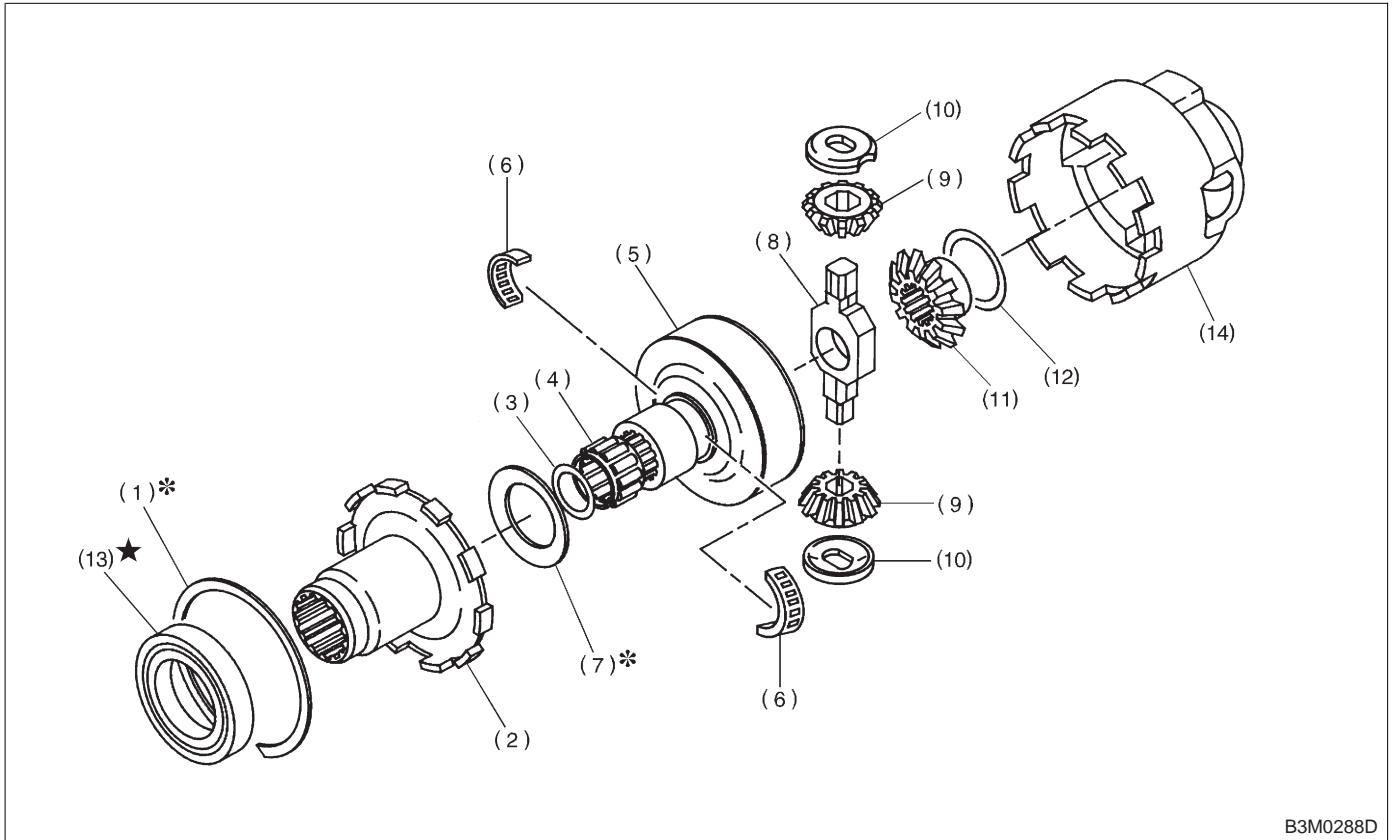


7. Center Differential  
A: DISASSEMBLY



B3M0288D

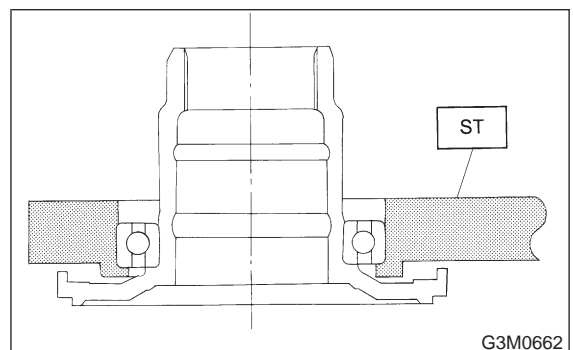
- |                               |                      |                               |
|-------------------------------|----------------------|-------------------------------|
| (1) Snap ring                 | (6) Needle bearing   | (11) Side gear                |
| (2) Center differential cover | (7) Adjusting washer | (12) Thrust washer            |
| (3) Snap ring                 | (8) Pinion shaft     | (13) Ball bearing             |
| (4) Needle bearing            | (9) Bevel pinion     | (14) Center differential case |
| (5) Viscous coupling          | (10) Retainer        |                               |

- 1) Remove snap ring (Inner-110) using flat bladed screwdriver.
- 2) Remove center differential cover.
- 3) Remove snap ring and roller bearing.
- 4) Remove viscous coupling.
- 5) Remove needle bearings.
- 6) Remove adjusting washer (45 × 62 × t).
- 7) Remove pinion shaft, bevel pinions and retainers.
- 8) Remove side gear.
- 9) Remove thrust washer.

- 10) Remove ball bearing using ST.

**CAUTION:**  
**Do not reuse ball bearing.**

ST 498077300 CENTER DIFFERENTIAL  
BEARING REMOVER



G3M0662

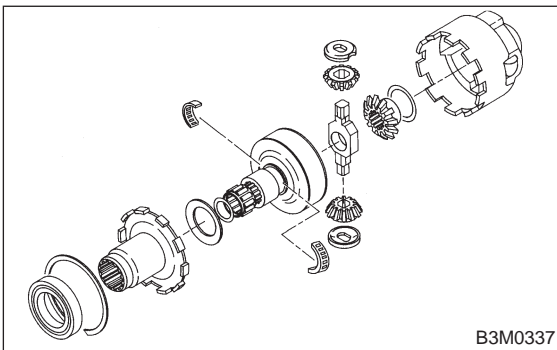
**B: ASSEMBLY**

1) Assembly is in the reverse order of disassembly.

Do the following:

- Install thrust washer with chamfered side of inner perimeter facing the side gear.
- Install adjusting washer with chamfered side of inner perimeter facing the viscous coupling using ST.

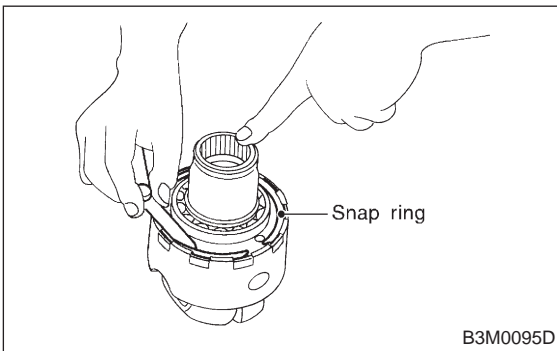
ST 499547300 INSTALLER SET



2) After assembling, using a thickness gauge measure clearance between snap ring and center differential case.

**Clearance:**

**0 — 0.15 mm (0 — 0.0059 in)**



3) If the measurement is not within the specification, select suitable snap ring.

| Snap ring (Inner-110) |                   |
|-----------------------|-------------------|
| Part No.              | Thickness mm (in) |
| 805100061             | 2.10 (0.0827)     |
| 805100062             | 2.21 (0.0870)     |
| 805100063             | 2.32 (0.0913)     |

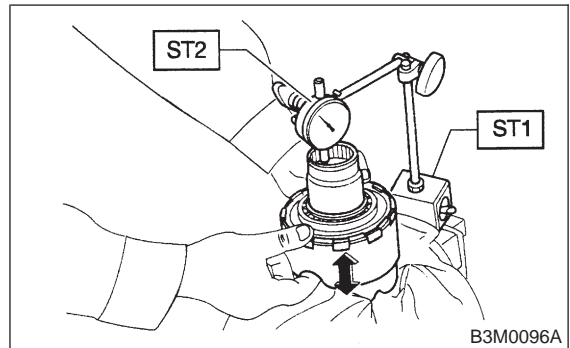
4) After assembling, set up a ST1 and ST2 to end of viscous coupling shaft. Move viscous coupling up and down, and measure backlash in the axial direction.

ST1 498247001 MAGNET BASE

ST2 498247100 DIAL GAUGE

**Backlash:**

**0.62 — 0.86 mm (0.0244 — 0.0339 in)**



5) If the measurement is not within the specification, select suitable washer.

| Adjusting washer (45 × 62 × t) |                   |
|--------------------------------|-------------------|
| Part No.                       | Thickness mm (in) |
| 803045041                      | 1.60 (0.0630)     |
| 803045042                      | 1.80 (0.0709)     |
| 803045043                      | 2.00 (0.0787)     |
| 803045044                      | 2.20 (0.0866)     |
| 803045045                      | 2.40 (0.0945)     |