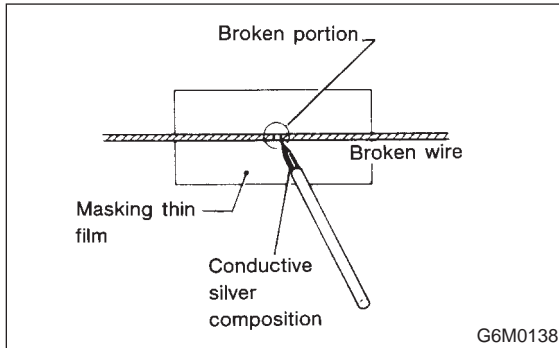


**B: REPAIR**

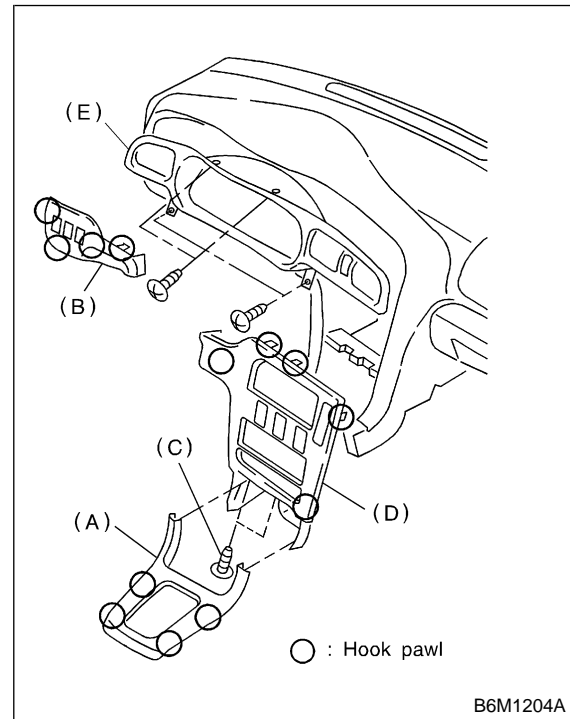
- 1) Clean broken wire and its surrounding area.
- 2) Cut off slit on (used) thin film by 0.5 mm (0.020 in) width and 10 mm (0.39 in) length.
- 3) Place the slit on glass along the broken wire, and deposit conductive silver composition (DUPONT No. 4817) on the broken portion.



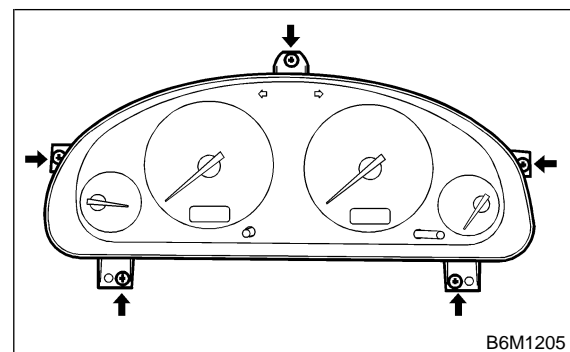
- 4) Dry out the deposited portion.
- 5) Inspect the repaired wire for continuity.

**8. Combination Meter****A: REMOVAL AND INSTALLATION**

- 1) Move steering wheel to most down position.
- 2) Remove front cover (A) and switch panel (B) while disconnecting connector.
- 3) Remove two screws (C) and then remove center panel (D) while disconnecting connector.
- 4) Remove screws which secure visor and remove visor (E) while disconnecting connector.



- 5) Remove screws which secure combination meter, and pull combination meter out.

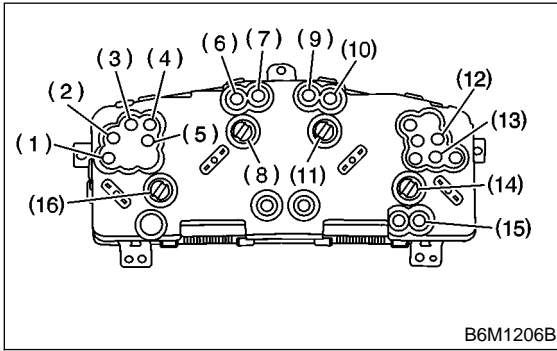


- 6) Disconnect connector from top of combination meter.
- 7) Installation is in the reverse order of removal.

**CAUTION:**

**When installing combination meter, be sure to connect connectors to top of combination meter.**

**B: BULB REPLACEMENT**



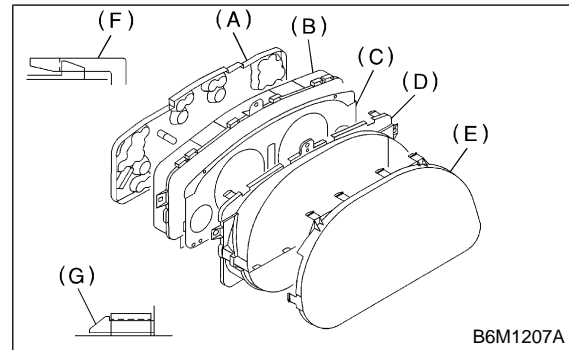
- (1) FWD
- (2) AT oil temp.
- (3) Oil pressure
- (4) Check engine
- (5) Charge
- (6) HI-beam
- (7) Turn RH
- (8) Tachometer
- (9) Turn LH
- (10) Brake
- (11) Speedometer
- (12) Airbag
- (13) ABS
- (14) Speedometer and fuel gauge
- (15) Low fuel
- (16) Tachometer and temperature gauge

**C: DISASSEMBLY AND ASSEMBLY**

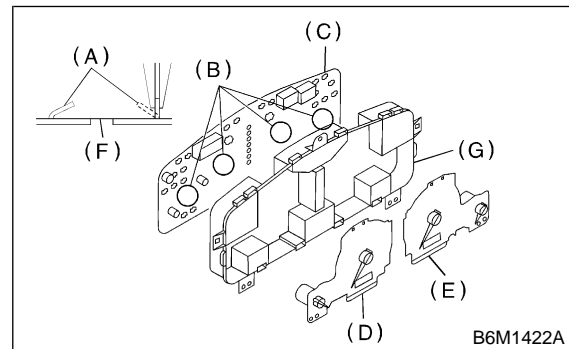
**CAUTION:**

- Do not touch the printed circuit elements with your bare hand. Use a suitable tool.
- Do not touch the indicator plate and pointer with your bare hand.

- 1) Disengage pawls (F) and then remove back panel (A) from case (B).
- 2) Disengage pawls (G) and then remove lens mask (E), reflector (D) and window plate (C) from case (B).



- 3) Pry up pawl (A) at portion (B) of printed circuit (C) using radioman's pliers. Push speedometer assembly (D) and tachometer assembly (E) out of hole (F) with a punch.
- 4) Pry up the pawl in the center of printed circuit (C) and remove the printed circuit board from case (G).



- 5) Assembly is in the reverse order of disassembly.