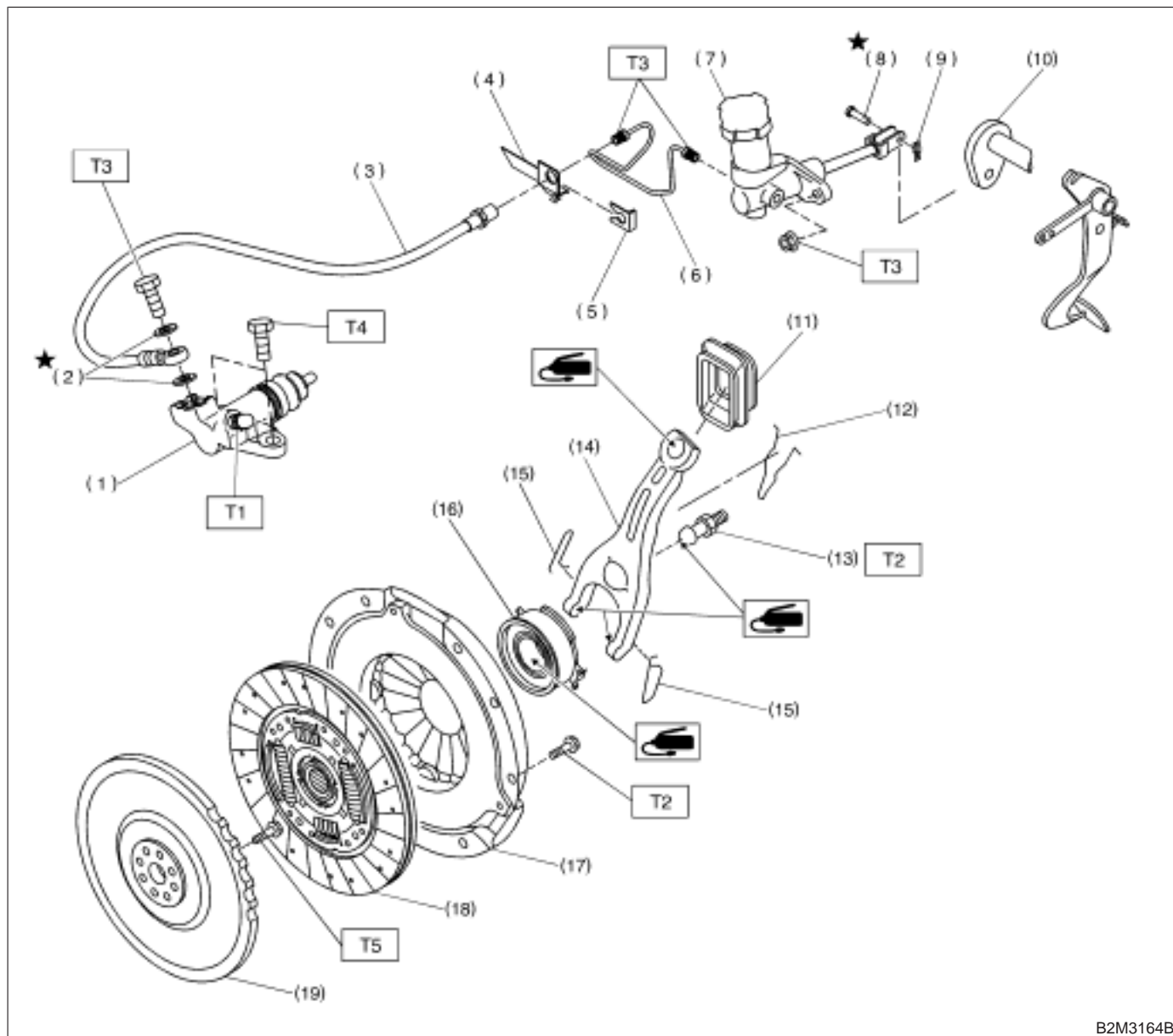


1. Clutch System



B2M3164B

- | | |
|--------------------------|-----------------------------------|
| (1) Operating cylinder | (10) Lever |
| (2) Washer | (11) Clutch release lever sealing |
| (3) Clutch hose | (12) Retainer spring |
| (4) Bracket | (13) Pivot |
| (5) Clip | (14) Release lever |
| (6) Pipe | (15) Clip |
| (7) Master cylinder ASSY | (16) Release bearing |
| (8) Clevis pin | (17) Clutch cover |
| (9) Snap pin | (18) Clutch disc |

- (19) Flywheel

Tightening torque: N-m (kg-m, ft-lb)
T1: 8±2 (0.8±0.2, 5.8±1.4)
T2: 15.7±1.5 (1.6±0.15, 11.6±1.1)
T3: 18±3 (1.8±0.3, 13.0±2.2)
T4: 37±3 (3.8±0.3, 27.5±2.2)
T5: 72±3 (7.3±0.3, 52.8±2.2)