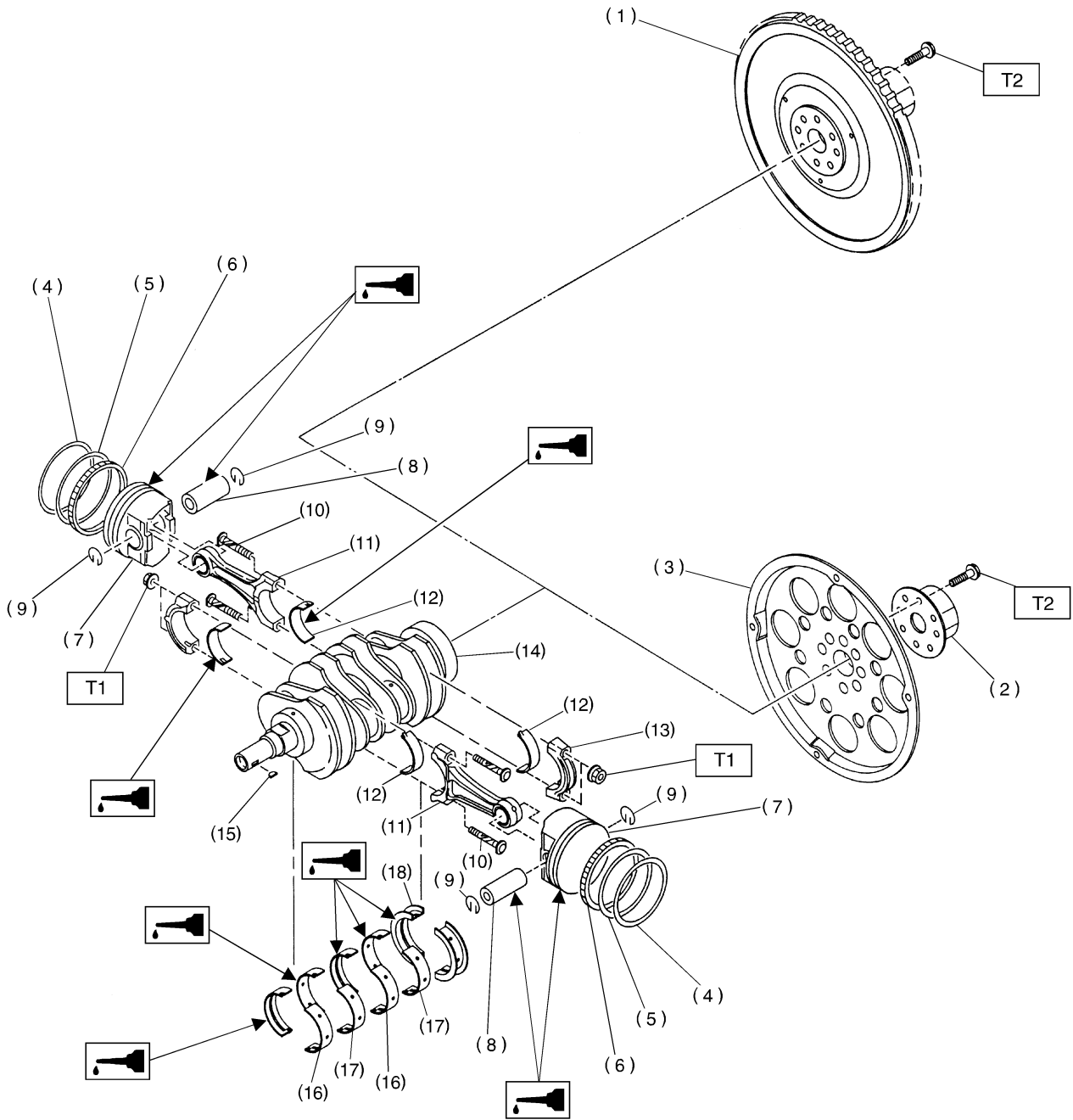


5. Crankshaft and Piston



B2M3429A

- (1) Flywheel (MT)
- (2) Reinforcement (AT)
- (3) Drive plate (AT)
- (4) Top ring
- (5) Second ring
- (6) Oil ring
- (7) Piston
- (8) Piston pin

- (9) Circlip
- (10) Connecting rod bolt
- (11) Connecting rod
- (12) Connecting rod bearing
- (13) Connecting rod cap
- (14) Crankshaft
- (15) Woodruff key
- (16) Crankshaft bearing #1, #3

- (17) Crankshaft bearing #2, #4
- (18) Crankshaft bearing #5

Tightening torque: N·m (kg·m, ft·lb)
T1: 44.6±1.5 (4.55±0.15, 32.9±1.1)
T2: 72±3 (7.3±0.3, 52.8±2.2)
