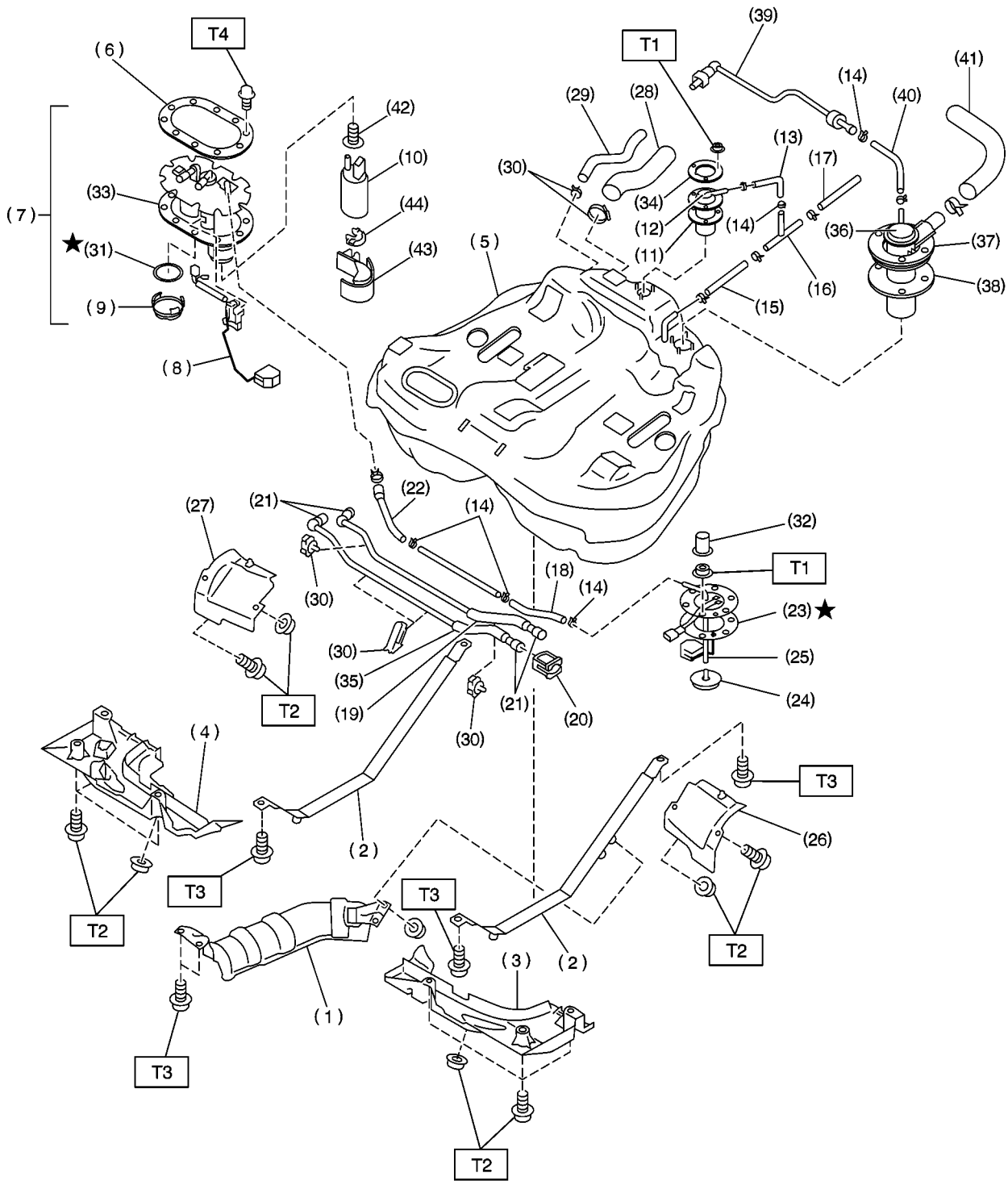


1. Fuel Tank



B2M3662A

- | | | |
|----------------------------|-------------------------------------|-------------------------|
| (1) Heat sealed cover | (18) Jet pump hose A | (35) Fuel delivery tube |
| (2) Fuel tank band | (19) Fuel return tube | (36) Vent valve |
| (3) Protector LH (Front) | (20) Retainer | (37) Vent valve plate |
| (4) Protector RH (Front) | (21) Quick connector | (38) Vent valve gasket |
| (5) Fuel tank | (22) Jet pump hose B | (39) Evaporation tube |
| (6) Fuel pump plate | (23) Fuel sub level sensor gasket | (40) Evaporation hose D |
| (7) Fuel pump ASSY | (24) Jet pump filter | (41) Air vent hose |
| (8) Fuel level sensor | (25) Fuel sub level sensor | (42) Seal |
| (9) Cap | (26) Protector LH (Rear) | (43) Fuel pump holder |
| (10) Fuel pump | (27) Protector RH (Rear) | (44) Grommet |
| (11) Fuel cut valve gasket | (28) Fuel filler hose | |
| (12) Fuel cut valve | (29) Fuel tank pressure sensor hose | |
| (13) Evaporation hose A | (30) Clamp | |
| (14) Clip | (31) Gasket | |
| (15) Evaporation hose C | (32) Cap | |
| (16) Joint pipe | (33) Gasket | |
| (17) Evaporation hose B | (34) Fuel cut valve plate | |

Tightening torque: N·m (kg·m, ft·lb)

T1: 4.4±1.5 (0.45±0.15, 3.3±1.1)

T2: 18±5 (1.8±0.5, 13.0±3.6)

T3: 33±10 (3.4±1.0, 25±7)

T4: 5.9±1.5 (0.6±0.15, 4.3±1.1)