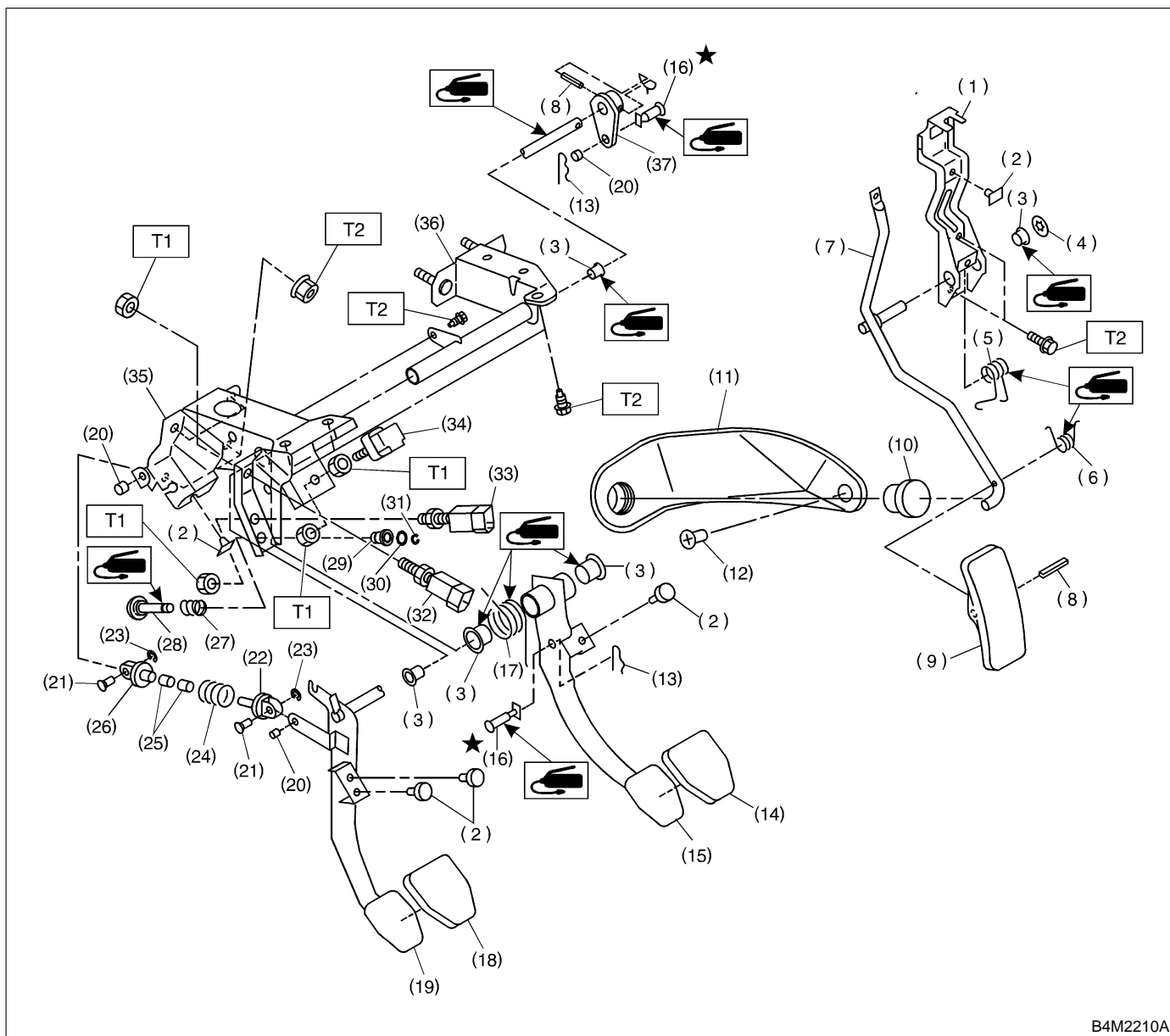


1. Pedal

A: MT MODEL



B4M2210A

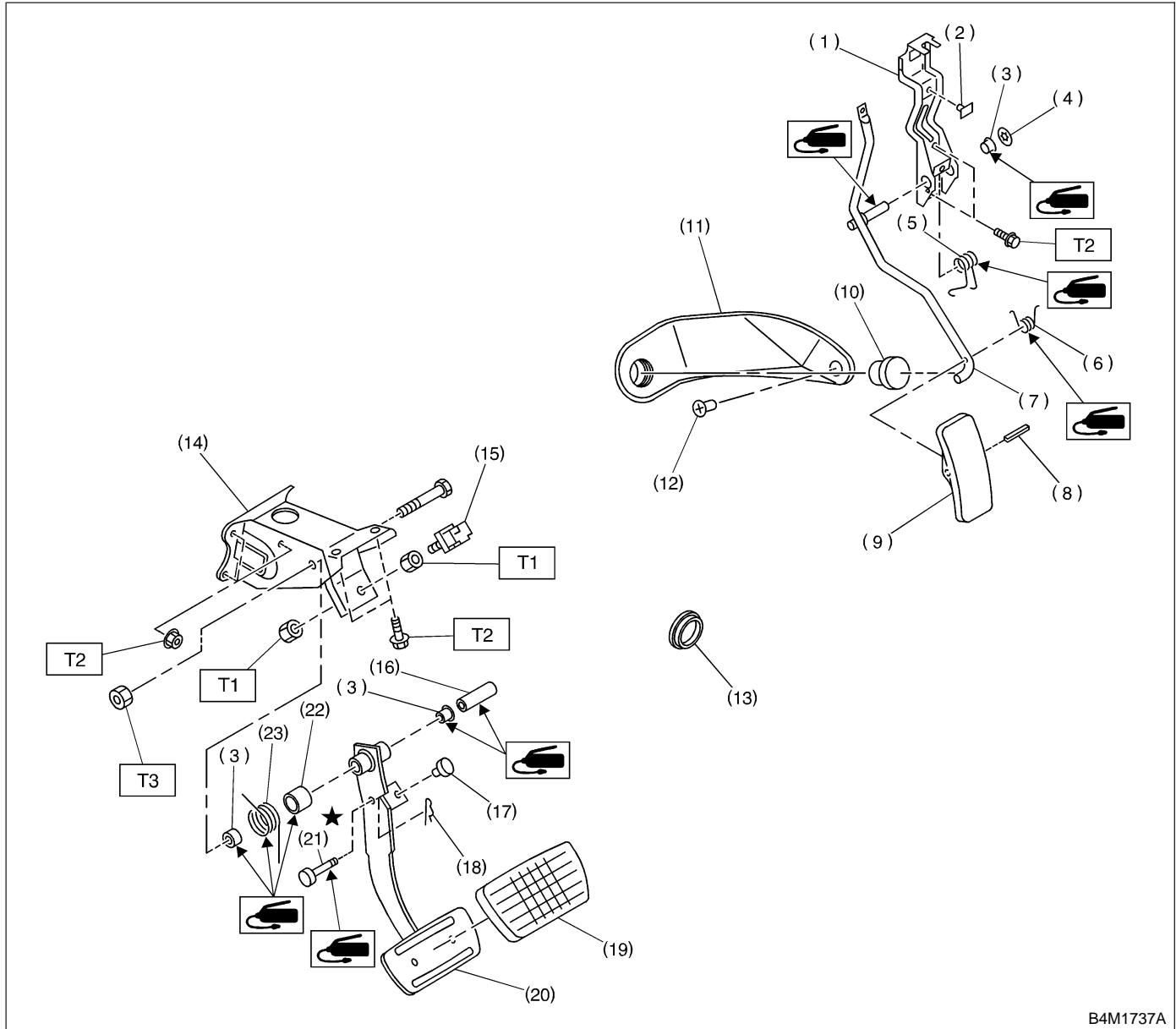
- | | | |
|------------------------------|-------------------------|--|
| (1) Accelerator bracket | (16) Clevis pin | (31) Clip |
| (2) Stopper | (17) Brake pedal spring | (32) Clutch switch (Starter interlock) |
| (3) Bushing | (18) Clutch pedal pad | (33) Clutch switch (With cruise control) |
| (4) Clip | (19) Clutch pedal | (34) Stop light switch |
| (5) Accelerator spring | (20) Bushing C | (35) Pedal bracket |
| (6) Accelerator pedal spring | (21) Clutch clevis pin | (36) Clutch master cylinder bracket |
| (7) Accelerator pedal lever | (22) Assist rod A | (37) Lever |
| (8) Spring pin | (23) Clip | |
| (9) Accelerator pedal | (24) Assist spring | |
| (10) Accelerator stopper | (25) Assist bushing | |
| (11) Accelerator plate | (26) Assist rod B | |
| (12) Clip | (27) Spring S | |
| (13) Snap pin | (28) Rod S | |
| (14) Brake pedal pad | (29) Bushing S | |
| (15) Brake pedal | (30) O-ring | |

Tightening torque: N·m (kg·m, ft·lb)

T1: 8±2 (0.8±0.2, 5.8±1.4)

T2: 18±5 (1.8±0.5, 13.0±3.6)

B: AT MODEL



- (1) Accelerator bracket
- (2) Stopper
- (3) Bushing
- (4) Clip
- (5) Accelerator spring
- (6) Accelerator pedal spring
- (7) Accelerator pedal lever
- (8) Spring pin
- (9) Accelerator pedal
- (10) Accelerator stopper

- (11) Accelerator plate
- (12) Clip
- (13) Plug
- (14) Pedal bracket
- (15) Stop light switch
- (16) Spacer
- (17) Stopper
- (18) Snap pin
- (19) Brake pedal pad
- (20) Brake pedal

- (21) Clevis pin
- (22) Brake spacer
- (23) Brake pedal spring

Tightening torque: N·m (kg·m, ft·lb)

T1: 8±2 (0.8±0.2, 5.8±1.4)

T2: 18±5 (1.8±0.5, 13.0±3.6)

T3: 29±7 (3.0±0.7, 21.7±5.1)