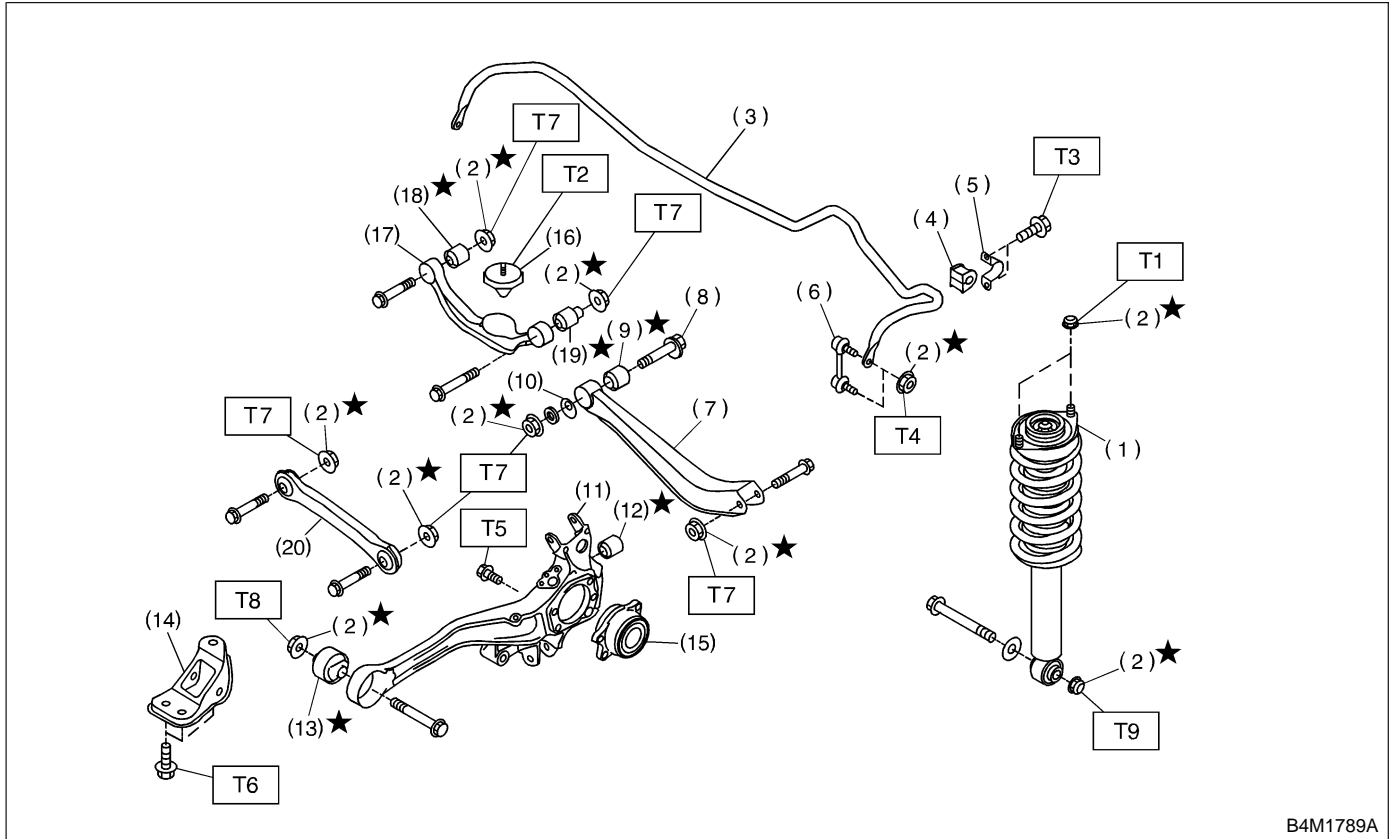


9. Link Rear

A: REMOVAL



B4M1789A

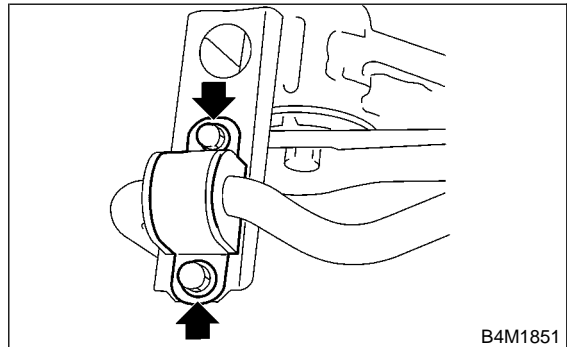
- | | |
|------------------------|-----------------------------------|
| (1) Shock absorber | (12) Rear arm rear bushing |
| (2) Self-locking nut | (13) Rear arm front bushing |
| (3) Stabilizer | (14) Rear arm bracket |
| (4) Stabilizer bushing | (15) Hub bearing unit |
| (5) Clamp | (16) Helper |
| (6) Stabilizer link | (17) Link upper |
| (7) Link rear | (18) Link upper bushing (Inside) |
| (8) Adjusting bolt | (19) Link upper bushing (Outside) |
| (9) Link rear bushing | (20) Link front |
| (10) Adjusting washer | |
| (11) Rear arm | |

Tightening torque: N-m (kg-m, ft-lb)

- T1: 30±7 (3.1±0.7, 22.4±5.1)**
T2: 32±10 (3.3±1.0, 23.9±7.2)
T3: 39±7 (4.0±0.7, 28.9±5.1)
T4: 44±6 (4.5±0.6, 32.5±4.3)
T5: 66±10 (6.7±1.0, 48.5±7.2)
T6: 108±15 (11±1.5, 80±11)
T7: 123±15 (12.5±1.5, 90±11)
T8: 147±20 (15±2, 108±14)
T9: 157±20 (16±2, 116±14)

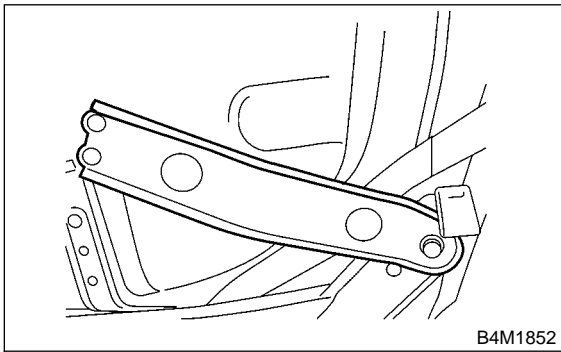
1) Loosen wheel nuts. Lift-up vehicle and remove wheel.

2) Remove bolt securing stabilizer clamps to sub frame.

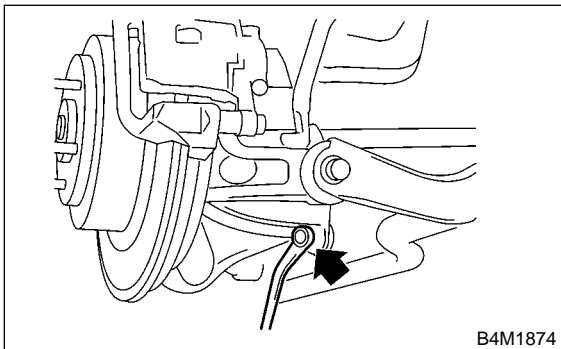


B4M1851

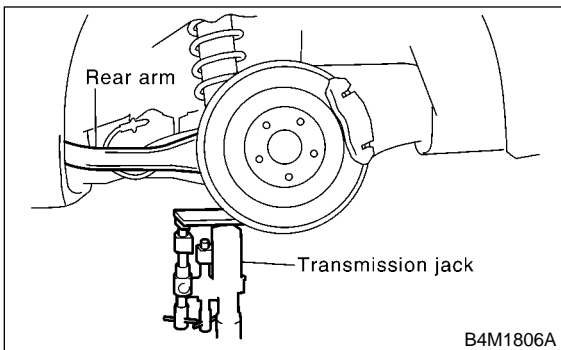
3) Remove support sub frame RH. (When removing RH side link rear.)



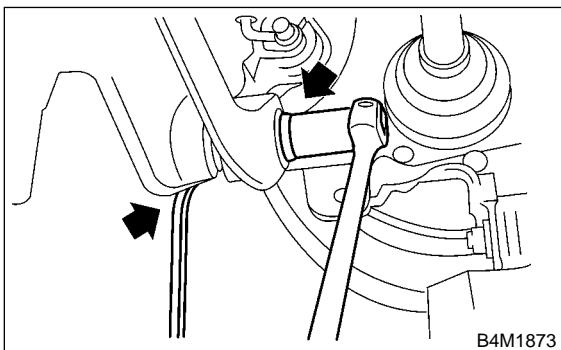
4) Remove stabilizer link.



5) Use transmission jack to support rear arm horizontally.



6) Remove bolt securing link rear to rear arm.

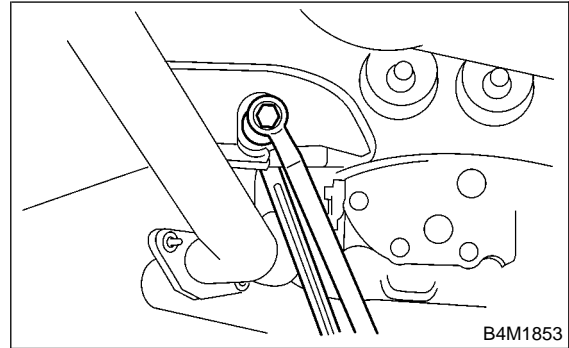


7) Scribe an alignment mark on link rear adjusting bolt and sub frame.

8) Remove bolts securing link rear to sub frame, detach link rear.

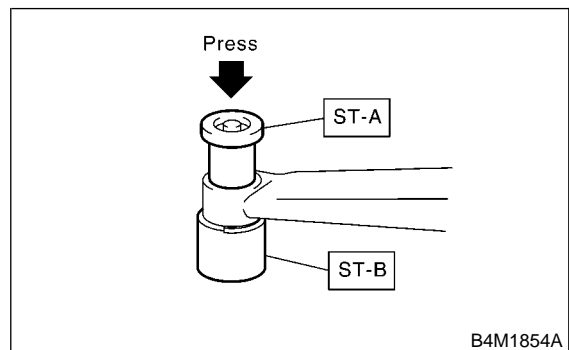
CAUTION:

To loosen adjusting bolt, always loosen nut while holding the head of adjusting bolt.



B: DISASSEMBLY

Using ST-A, B, press bushing out of place.
ST-A, B 20099AE000 INSTALLER & REMOVER

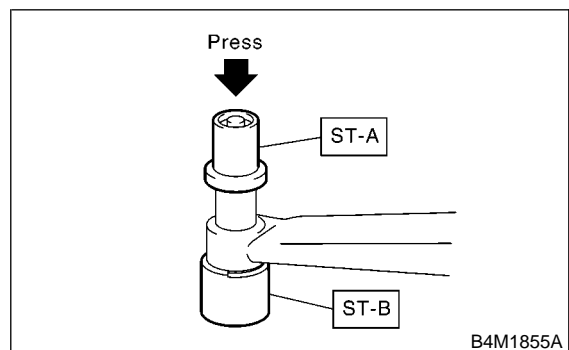


C: INSPECTION

Visually check link rear for damage or bends.

D: ASSEMBLY

Using ST, press bushing into place.
ST-A, B 20099AE000 INSTALLER & REMOVER

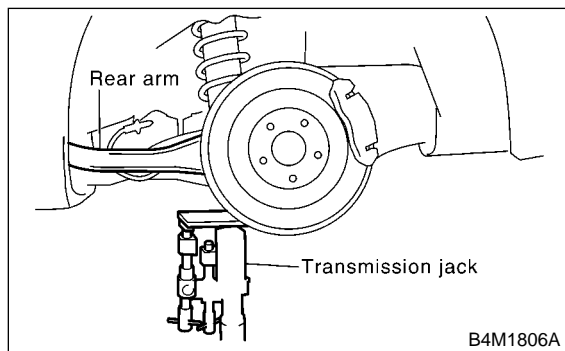


E: INSTALLATION

To install, reverse removal procedures, observing the following instructions.

CAUTION:

- Using transmission jack, support rear arm horizontally, install link rear and tighten nuts to specified torque.



- Tighten nut when installing adjusting bolt.
- Replace self-locking nut.

NOTE:

Check wheel alignment and adjust if necessary.