

GENERAL DESCRIPTION

Wiper and Washer Systems

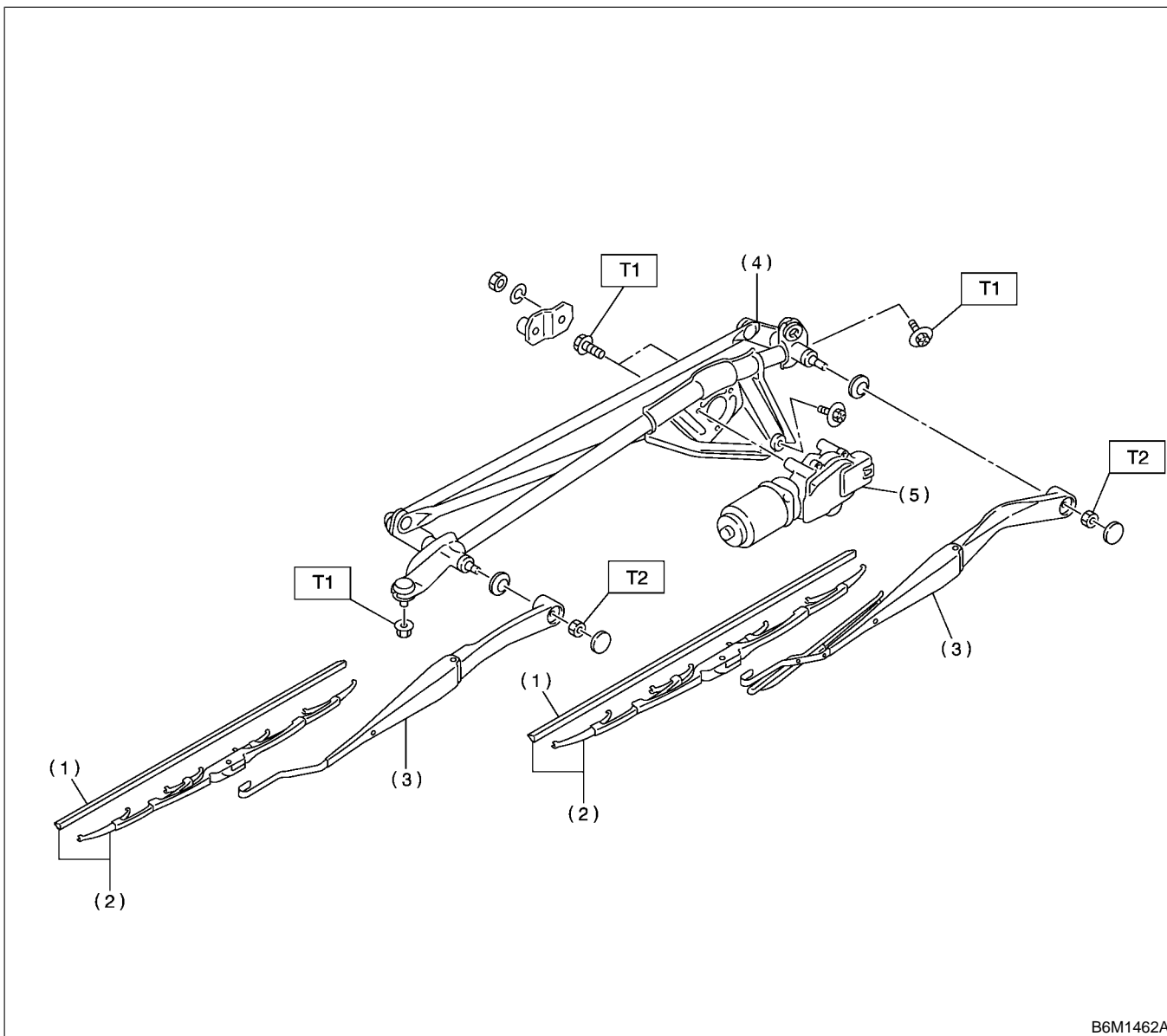
1. General Description S902001

A: SPECIFICATIONS S902001E49

Front wiper motor	Input	12 V — 72 W or less
Rear wiper motor	Input	12 V — 42 W or less
Front washer motor	Pump type	Centrifugal
	Input	12 V — 36 W or less
Rear washer motor	Pump type	Centrifugal
	Input	12 V — 36 W or less

B: COMPONENT S902001A05

1. FRONT WIPER S902001A0501



- (1) Wiper rubber
- (2) Wiper blade ASSY
- (3) Wiper arm
- (4) Wiper link
- (5) Wiper motor

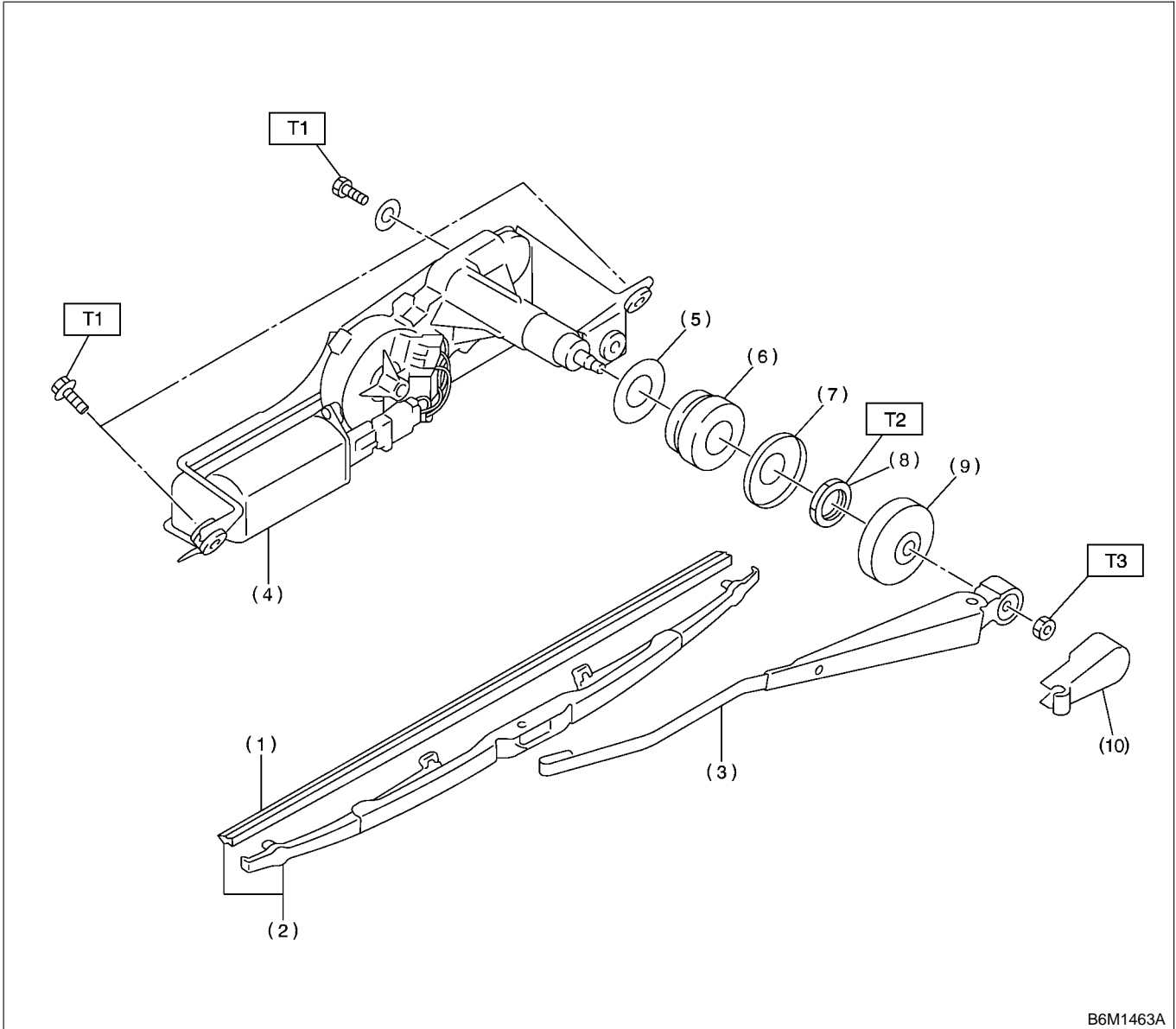
Tightening torque: N-m (kgf-m, ft-lb)

T1: 5.9 (0.6, 4.3)

T2: 20 (2.0, 14.5)

WW-2

2. REAR WIPER S902001A0502



B6M1463A

- | | |
|----------------------|----------------------|
| (1) Wiper rubber | (7) Spacer B |
| (2) Wiper blade ASSY | (8) Nut |
| (3) Wiper arm | (9) Cap |
| (4) Wiper motor | (10) Wiper arm cover |
| (5) Spacer A | |
| (6) Cushion | |

Tightening torque: N-m (kgf-m, ft-lb)

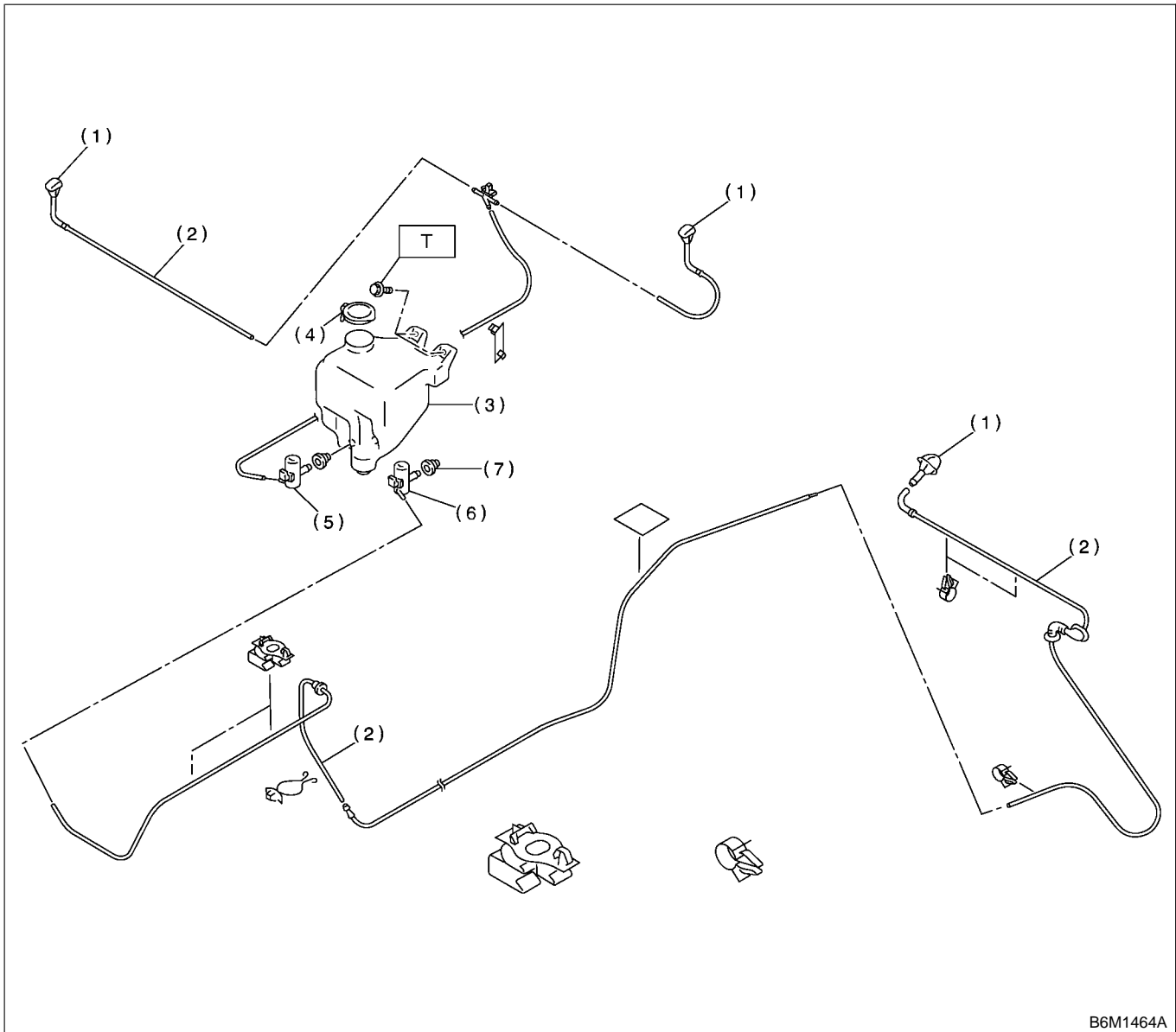
T1: 5.9 (0.6, 4.3)

T2: 7.4 (0.75, 5.4)

T3: 7.8 (0.8, 5.8)

GENERAL DESCRIPTION

3. WASHER TANK S902001A0503



B6M1464A

- | | |
|---------------------|------------------------|
| (1) Washer nozzle | (5) Front washer motor |
| (2) Washer hose | (6) Rear washer motor |
| (3) Washer tank | (7) Grommet |
| (4) Washer tank cap | |

Tightening torque: N·m (kgf·m, ft·lb)

T: 5.9 (0.6, 4.3)

C: CAUTION S902001A03

- Reconnect connectors and hoses securely. After reconnecting, confirm that each function operates normally.
- Be careful that wire harnesses of airbag system pass near electrical parts and switches.
- Wire harnesses and connectors of all airbag system are yellow color. Do not use a tester on these circuits.
- Care must be taken when installing the piping hose so that no bending, jamming, etc. are caused.
- If even a little oil or grease such as silicon oil gets in the tank and washer passages, an oil film easily forms on the glass, causing the wiper to chatter and judder. Therefore, be careful not to let this happen.