

# GENERAL DESCRIPTION

ABS

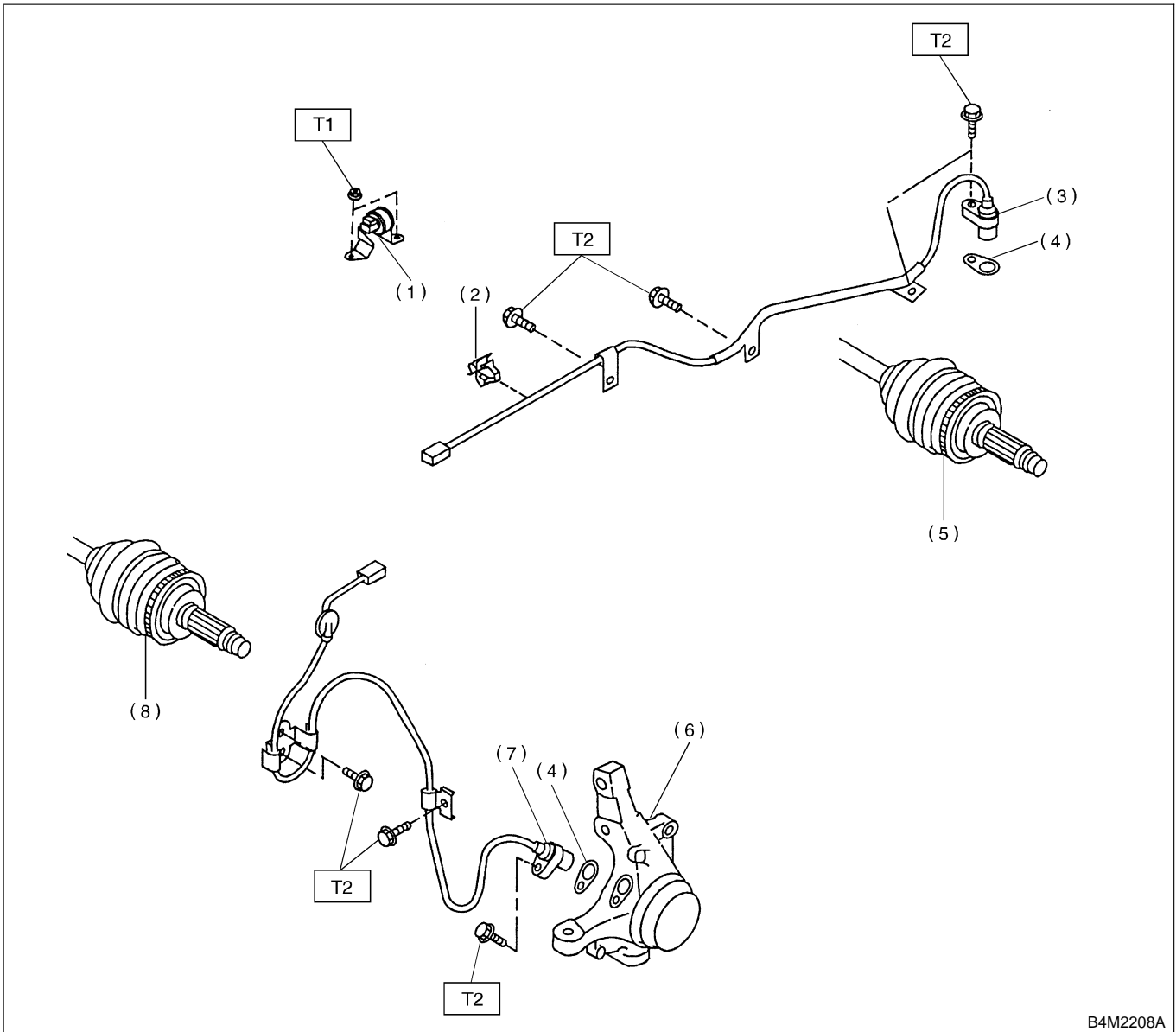
## 1. General Description S401001

### A: SPECIFICATIONS S401001E49

Item			Standard or remarks	
ABS sensor	ABS sensor gap	Front	0.3 — 0.8 mm (0.012 — 0.031 in)	
		Rear	0.44 — 0.94 mm (0.0173 — 0.0370 in)	
	ABS sensor resistance		1.25±0.25 kΩ	
	Marks of the harness	Front LH	Except OUTBACK	Yellow
			OUTBACK	Brown
		Front RH	Except OUTBACK	Light blue
			OUTBACK	White
		Rear LH		White
Rear RH		Yellow		
G sensor	G sensor voltage		2.3±0.2 V	
ABS control module and hydraulic control unit (ABSCM&H/U) marks	AT (Except OUTBACK)		C5	
	MT (Except OUTBACK)		C6	
	AT (OUTBACK)		CE	
	MT (OUTBACK)		CF	

**B: COMPONENT** S401001A05

**1. SENSOR** S401001A0501



- (1) G sensor
- (2) Clip
- (3) Rear ABS sensor LH
- (4) ABS spacer
- (5) Tone wheel (Rear)

- (6) Housing
- (7) Front ABS sensor LH
- (8) Tone wheel (Front)

**Tightening torque: N-m (kgf-m, ft-lb)**

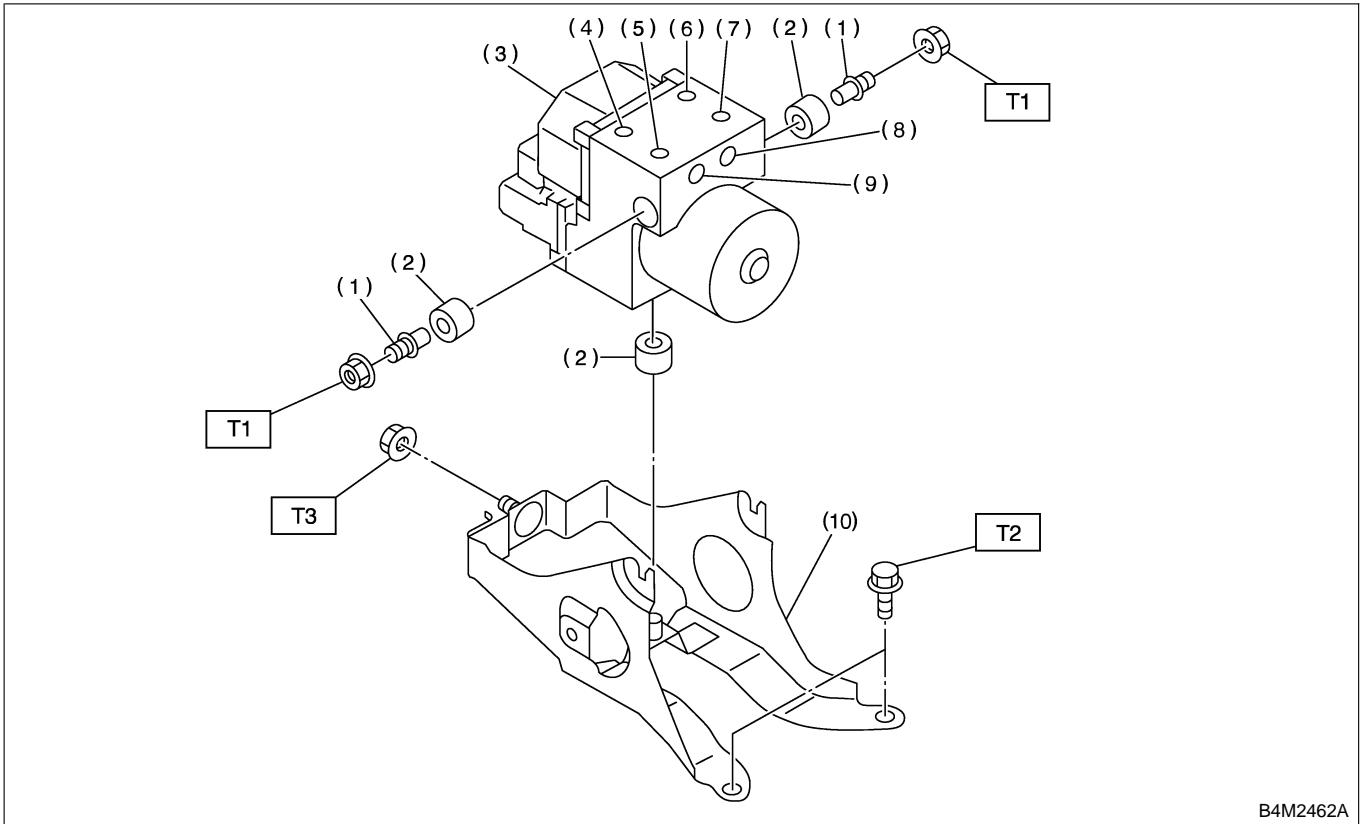
**T1: 7.4 (0.75, 5.4)**

**T2: 32 (3.3, 24)**

# GENERAL DESCRIPTION

ABS

## 2. ABS CONTROL MODULE AND HYDRAULIC CONTROL UNIT (ABSCM&H/U) S401001A0502



B4M2462A

- (1) Stud bolt
- (2) Damper
- (3) ABS control module and hydraulic control unit
- (4) Front-LH outlet
- (5) Secondary inlet

- (6) Front-RH outlet
- (7) Primary inlet
- (8) Rear-LH outlet
- (9) Rear-RH outlet
- (10) Bracket

**Tightening torque: N·m (kgf·m, ft·lb)**

**T1: 18 (1.8, 13.06)**

**T2: 32 (3.3, 24)**

**T3: 38 (3.8, 28)**

**C: CAUTION** S401001A03

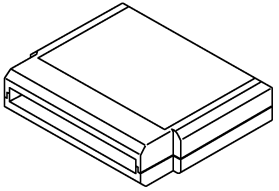

- Wear working clothing, including a cap, protective goggles, and protective shoes during operation.
- Remove contamination including dirt and corrosion before removal, installation or disassembly.
- Keep the disassembled parts in order and protect them from dust or dirt.
- Before removal, installation or disassembly, be sure to clarify the failure. Avoid unnecessary removal, installation, disassembly, and replacement.
- Be careful not to burn your hands, because each part in the vehicle is hot after running.
- Be sure to tighten fasteners including bolts and nuts to the specified torque.
- Place shop jacks or safety stands at the specified points.
- Before disconnecting electrical connectors of sensors or units, be sure to disconnect negative terminal from battery.

# GENERAL DESCRIPTION

ABS

## D: PREPARATION TOOL S401001A17

### 1. SPECIAL TOOLS S401001A1701

ILLUSTRATION	TOOL NUMBER	DESCRIPTION	REMARKS
  B2M3876	24082AA150	CARTRIDGE	Troubleshooting for electrical systems.
  B2M3877	22771AA030	SELECT MONITOR KIT	Troubleshooting for electrical systems. <ul style="list-style-type: none"> <li>● English: 22771AA030 (Without printer)</li> <li>● German: 22771AA070 (Without printer)</li> <li>● French: 22771AA080 (Without printer)</li> <li>● Spanish: 22771AA090 (Without printer)</li> </ul>

### 2. GENERAL PURPOSE TOOLS S401001A1702

TOOL NAME	REMARKS
Circuit tester	Used for measuring resistance, voltage and ampere.
Pressure gauge	Used for measuring oil pressure.
Oscilloscope	Used for measuring sensor.