

GENERAL DESCRIPTION

VDC

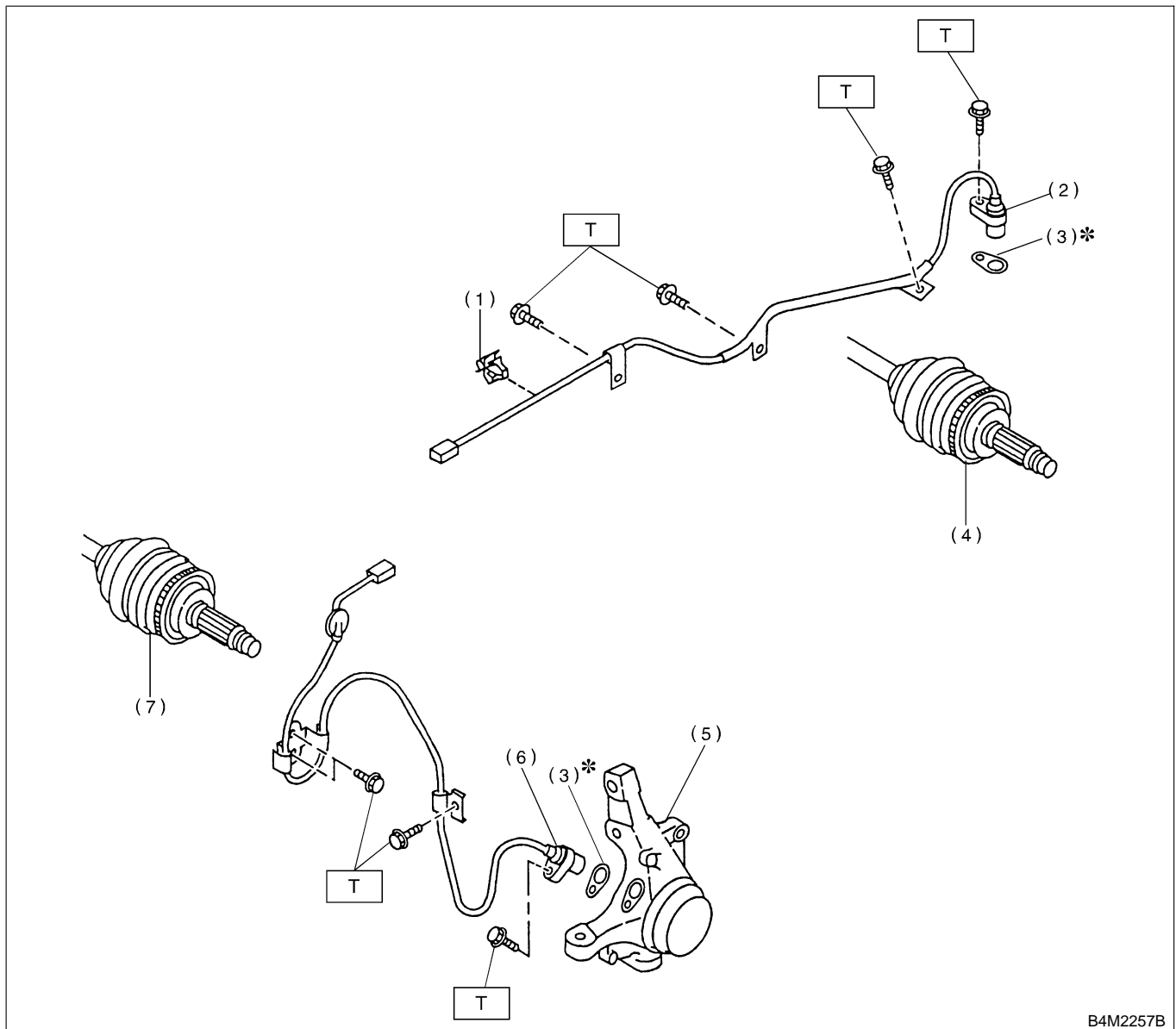
1. General Description S402001

A: SPECIFICATIONS S402001E49

Item		Standard or remarks	
ABS sensor	ABS sensor gap	Front	0.3 — 0.8 mm (0.012 — 0.031 in)
		Rear	0.44 — 0.94 mm (0.0173 — 0.0370 in)
	ABS sensor resistance		1.25±0.25 kΩ
	Marks of the harness	Front LH	Brown
		Front RH	Light blue
		Rear LH	Yellow
		Rear RH	White
Yaw rate and lateral G sensor	Lateral G sensor voltage	2.5±0.2 V	
VDC hydraulic control unit marks		D2	
VDC control module marks		E1	

B: COMPONENT S402001A05

1. ABS SENSOR S402001A0501



B4M2257B

- | | |
|-----------------------|------------------------|
| (1) Clip | (5) Housing |
| (2) Rear ABS sensor | (6) Front ABS sensor |
| (3) ABS spacer | (7) Tone wheel (Front) |
| (4) Tone wheel (Rear) | |

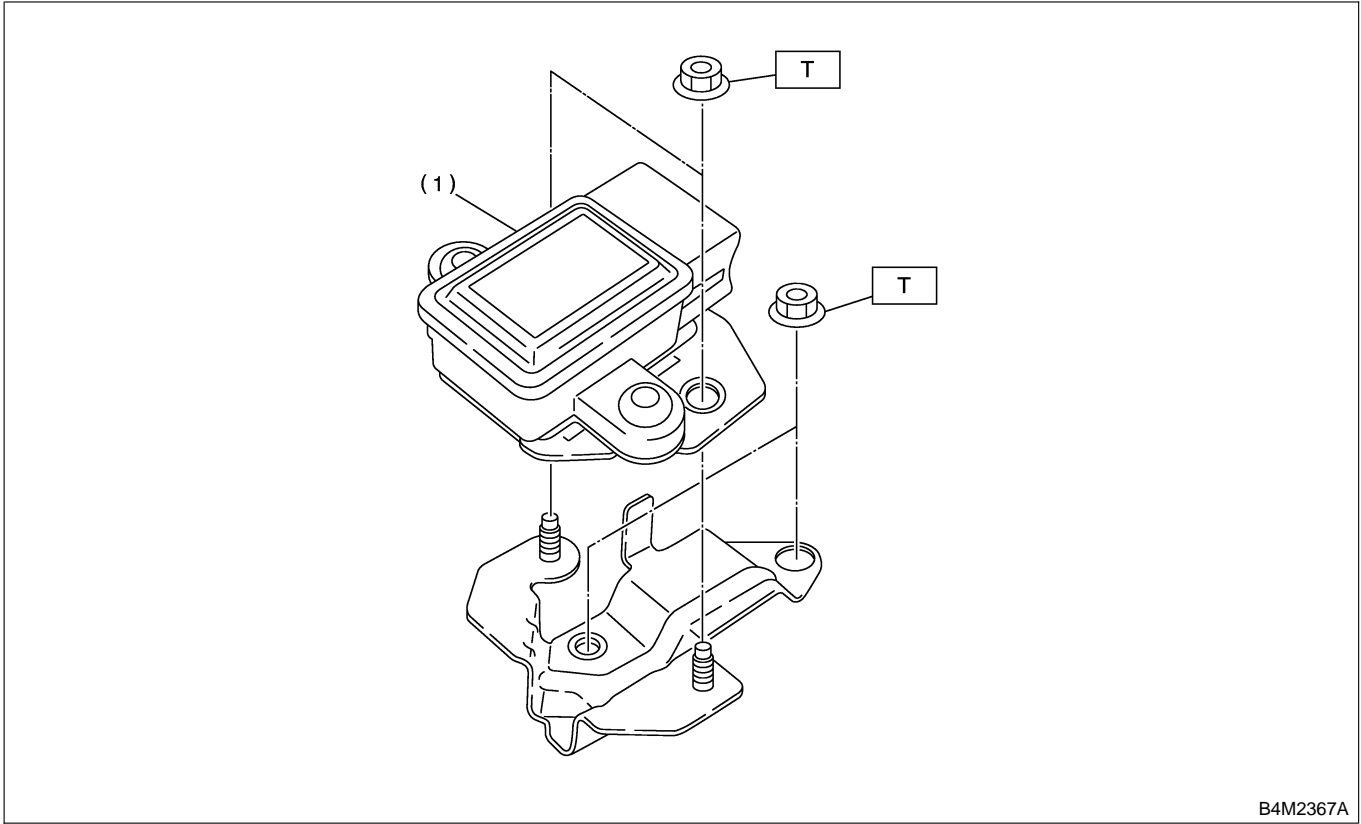
Tightening torque: N·m (kgf·m, ft·lb)

T: 32 (3.3, 24)

GENERAL DESCRIPTION

VDC

2. YAW RATE AND LATERAL G SENSOR S402001A0507



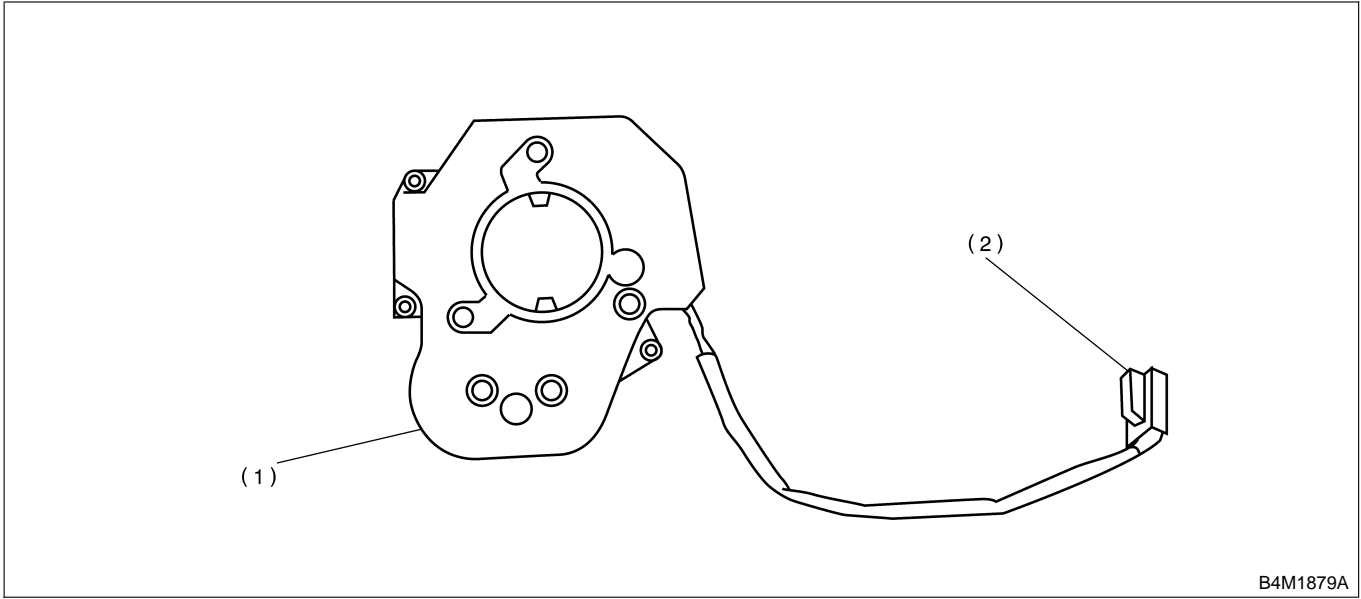
B4M2367A

(1) Yaw rate and lateral G sensor

Tightening torque: N·m (kgf·m, ft·lb)
T: 7.5 (0.76, 5.5)

VDC-4

3. STEERING ANGLE SENSOR S402001A0504



B4M1879A

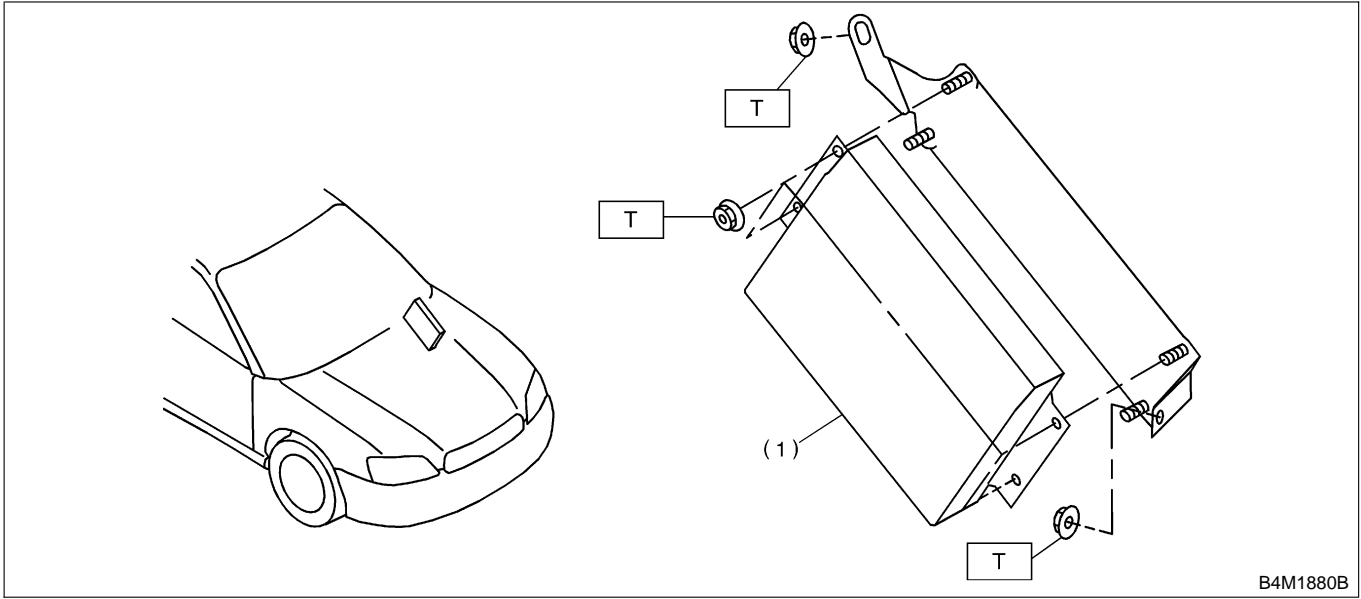
(1) Steering angle sensor

(2) Connector

GENERAL DESCRIPTION

VDC

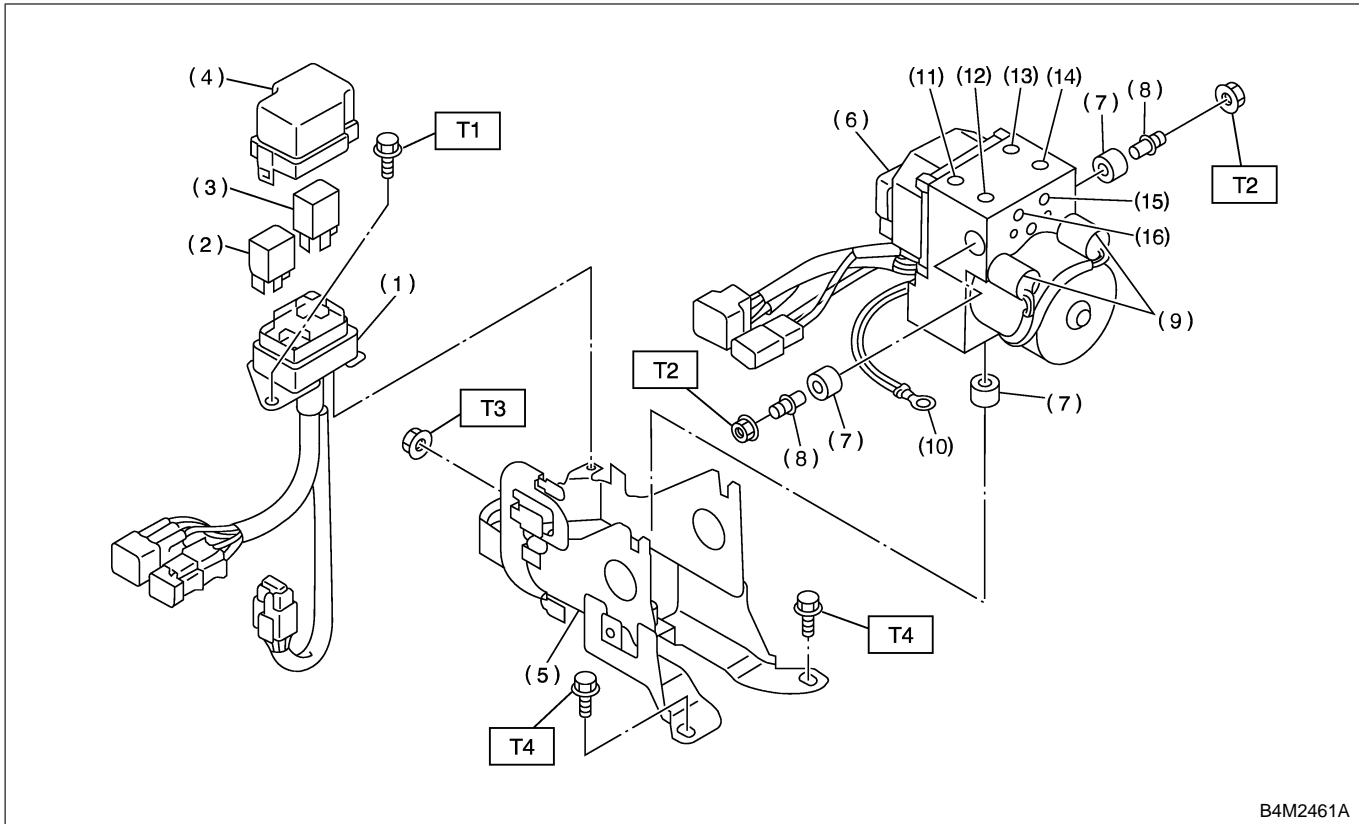
4. VDC CONTROL MODULE (VDCCM) S402001A0505



(1) VDC control module

Tightening torque: N·m (kgf·m, ft·lb)
T: 7.5 (0.76, 5.5)

5. HYDRAULIC CONTROL UNIT (H/U) S402001A0506



B4M2461A

- | | |
|----------------------------|----------------------|
| (1) Relay box | (9) Pressure sensor |
| (2) Motor relay | (10) Ground terminal |
| (3) Valve relay | (11) Front-LH outlet |
| (4) Cap | (12) Secondary inlet |
| (5) Bracket | (13) Front-RH outlet |
| (6) Hydraulic control unit | (14) Primary inlet |
| (7) Damper | (15) Rear-LH outlet |
| (8) Stud bolt | (16) Rear-RH outlet |

Tightening torque: N·m (kgf·m, ft·lb)

T1: 13 (1.3, 9.4)

T2: 18 (1.8, 13.0)

T3: 30 (3.1, 22.4)

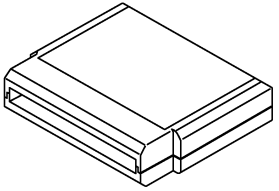

T4: 33 (3.4, 24.6)

C: CAUTION S402001A03

- Wear working clothing, including, a cap, protective goggles, and protective shoes during operation.
- Remove contamination including dirt and corrosion before removal, installation or disassembly.
- Keep the disassembled parts in order and protect them from dust or dirt.
- Before removal, installation or disassembly, be sure to clarify the failure. Avoid unnecessary removal, installation, disassembly, and replacement.
- Be careful not to burn your hands, because each part on the vehicle is hot after running.
- Be sure to tighten fasteners including bolts and nuts to the specified torque.
- Place shop jacks or safety stands at the specified points.
- Before disconnecting electrical connectors of sensors or units, be sure to disconnect negative terminal from battery.

D: PREPARATION TOOL S402001A17

1. SPECIAL TOOLS S402001A1701

ILLUSTRATION	TOOL NUMBER	DESCRIPTION	REMARKS
 <p style="text-align: center;">B2M3876</p>	24082AA150	CARTRIDGE	Troubleshooting for electrical systems.
 <p style="text-align: center;">B2M3877</p>	22771AA030	SELECT MONITOR KIT	Troubleshooting for electrical systems. <ul style="list-style-type: none"> ● English: 22771AA030 (Without printer) ● German: 22771AA070 (Without printer) ● French: 22771AA080 (Without printer) ● Spanish: 22771AA090 (Without printer)

2. GENERAL PURPOSE TOOLS S402001A1702

TOOL NAME	REMARKS
Circuit tester	Used for measuring resistance, voltage and ampere.
Pressure gauge	Used for measuring oil pressure.
Oscilloscope	Used for measuring sensor.