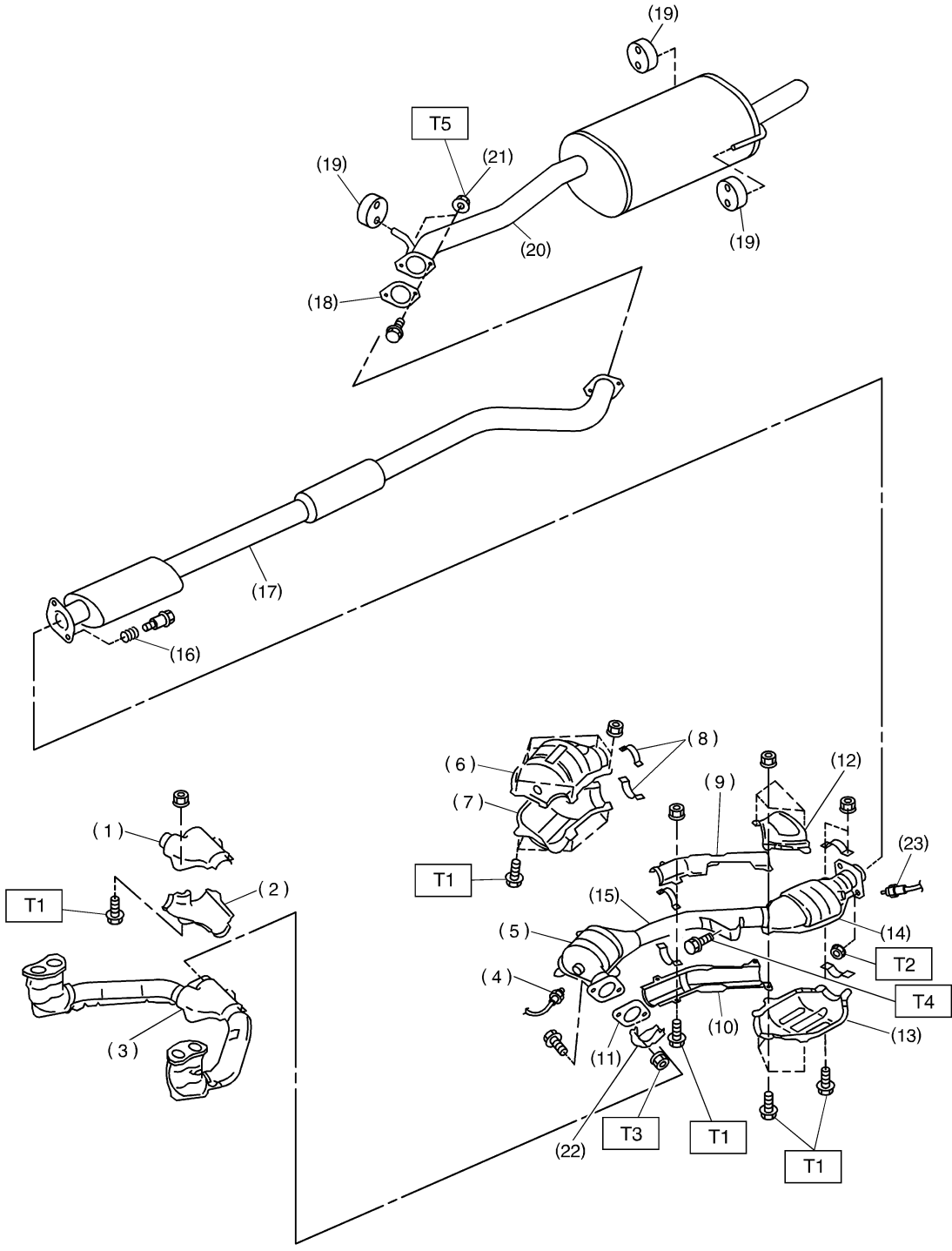


GENERAL DESCRIPTION

Exhaust

1. General Description S102001

A: COMPONENT S102001A05



B2M3438A

EX(H4)-2

GENERAL DESCRIPTION

Exhaust

- | | | |
|---|---|-------------------------|
| (1) Upper front exhaust pipe cover CTR | (10) Lower center exhaust pipe cover | (21) Self-locking nut |
| (2) Lower front exhaust pipe cover CTR | (11) Gasket | (22) Protector |
| (3) Front exhaust pipe | (12) Upper rear catalytic converter cover | (23) Rear oxygen sensor |
| (4) Front oxygen (A/F) sensor | (13) Lower rear catalytic converter cover | |
| (5) Front catalytic converter | (14) Rear catalytic converter | |
| (6) Upper front catalytic converter cover | (15) Center exhaust pipe | |
| (7) Lower front catalytic converter cover | (16) Spring | |
| (8) Clamp | (17) Rear exhaust pipe | |
| (9) Upper center exhaust pipe cover | (18) Gasket | |
| | (19) Cushion rubber | |
| | (20) Muffler | |

Tightening torque: N·m (kgf-m, ft-lb)

T1: 13 (1.3, 9.4)

T2: 18 (1.8, 13.0)

T3: 30 (3.1, 22.4)

T4: 35 (3.6, 26.0)

T5: 48 (4.9, 35.4)

EX(H4)-3

B: CAUTION S102001A03

- Wear working clothing, including a cap, protective goggles, and protective shoes during operation.
- Remove contamination including dirt and corrosion before removal, installation or disassembly.
- Keep the disassembled parts in order and protect them from dust or dirt.
- Before removal, installation or disassembly, be sure to clarify the failure. Avoid unnecessary removal, installation, disassembly, and replacement.
- Be careful not to burn your hands, because each part on the vehicle is hot after running.
- Be sure to tighten fasteners including bolts and nuts to the specified torque.
- Place shop jacks or safety stands at the specified points.
- Before disconnecting electrical connectors of sensors or units, be sure to disconnect negative terminal from battery.