

# GENERAL DESCRIPTION

Fuel Injection (Fuel Systems)

## 1. General Description S105001

### A: SPECIFICATIONS S105001E49

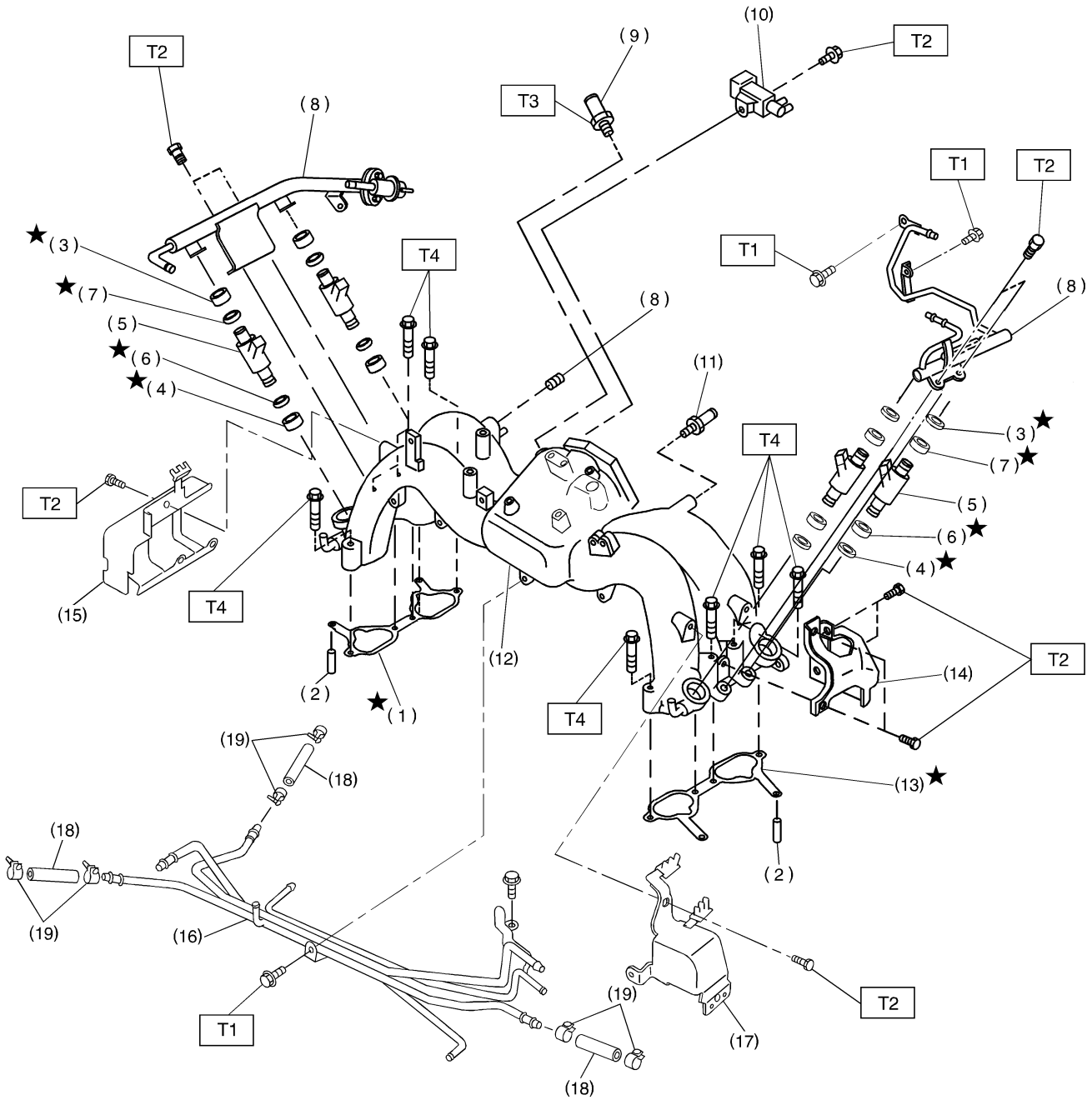
Model		
Fuel tank	Capacity	64 ℓ (16.9 US gal, 14.1 Imp gal)
	Location	Under rear seat
Fuel pump	Type	Impeller
	Shutoff discharge pressure	370 — 677 kPa (3.77 — 6.9 kg/cm <sup>2</sup> , 53.6 — 98 psi)
	Discharge flow	More than 65 ℓ (17.2 US gal, 14.3 Imp gal)/h [12 V at 300 kPa (3.06 kg/cm <sup>2</sup> , 43.5 psi)]
Fuel filter		Cartridge type

FU(H4)-2

### B: COMPONENT S105001A05

#### 1. INTAKE MANIFOLD S105001A0501

MT VEHICLES



B2M4151A

FU(H4)-3

# GENERAL DESCRIPTION

## Fuel Injection (Fuel Systems)

---

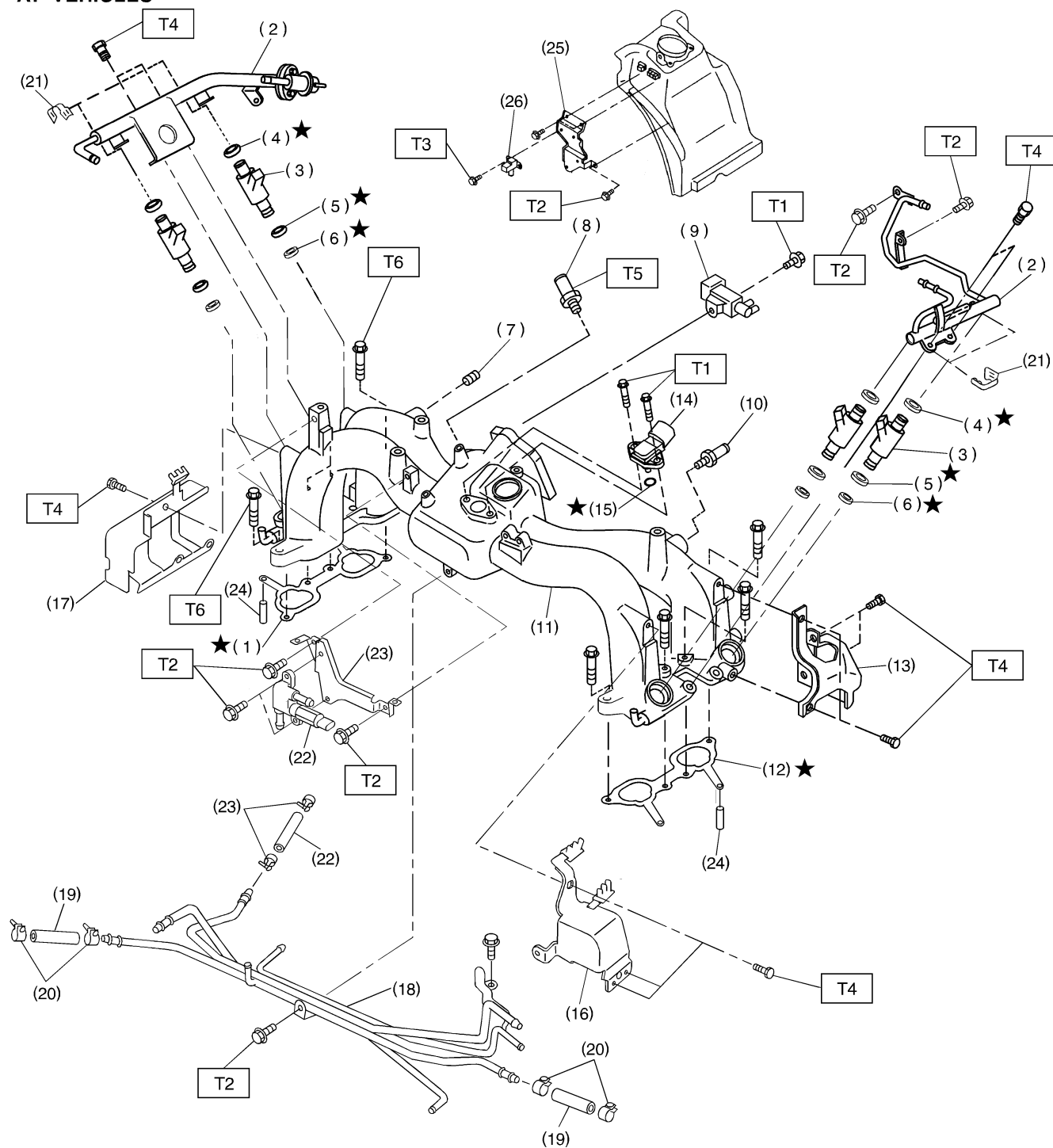
(1) Intake manifold gasket RH	(10) Purge control solenoid valve	(19) Clip
(2) Guide pin	(11) Nipple	
(3) Insulator A	(12) Intake manifold	<b>Tightening torque: N-m (kgf-m, ft-lb)</b>
(4) Insulator B	(13) Intake manifold gasket LH	<b>T1: 5.0 (0.51, 3.7)</b>
(5) Fuel injector	(14) Fuel pipe protector LH	<b>T2: 19 (1.9, 14)</b>
(6) O-ring B	(15) Fuel pipe protector RH	<b>T3: 22.5 (2.29, 16.6)</b>
(7) O-ring A	(16) Fuel pipe ASSY	<b>T4: 25 (2.5, 18.1)</b>
(8) Plug	(17) Fuel pipe protector LH	
(9) PCV valve	(18) Fuel hose	

---

# GENERAL DESCRIPTION

Fuel Injection (Fuel Systems)

## AT VEHICLES



B2M3454B

FU(H4)-5

# GENERAL DESCRIPTION

## Fuel Injection (Fuel Systems)

---

(1) Intake manifold gasket RH	(14) Intake air temperature and pressure sensor	(25) Atmospheric pressure sensor bracket
(2) Fuel injector pipe	(15) O-ring	(26) Atmospheric pressure sensor
(3) Fuel injector	(16) Fuel pipe protector LH	
(4) O-ring	(17) Fuel pipe protector RH	
(5) O-ring	(18) Fuel pipe ASSY	
(6) O-ring	(19) Fuel hose	
(7) Plug	(20) Clip	
(8) PCV valve	(21) Clip	
(9) Purge control solenoid valve	(22) Air assist injector solenoid valve	
(10) Nipple	(23) Air assist injector solenoid valve bracket	
(11) Intake manifold	(24) Guide pin	
(12) Intake manifold gasket LH		
(13) Fuel pipe protector LH		

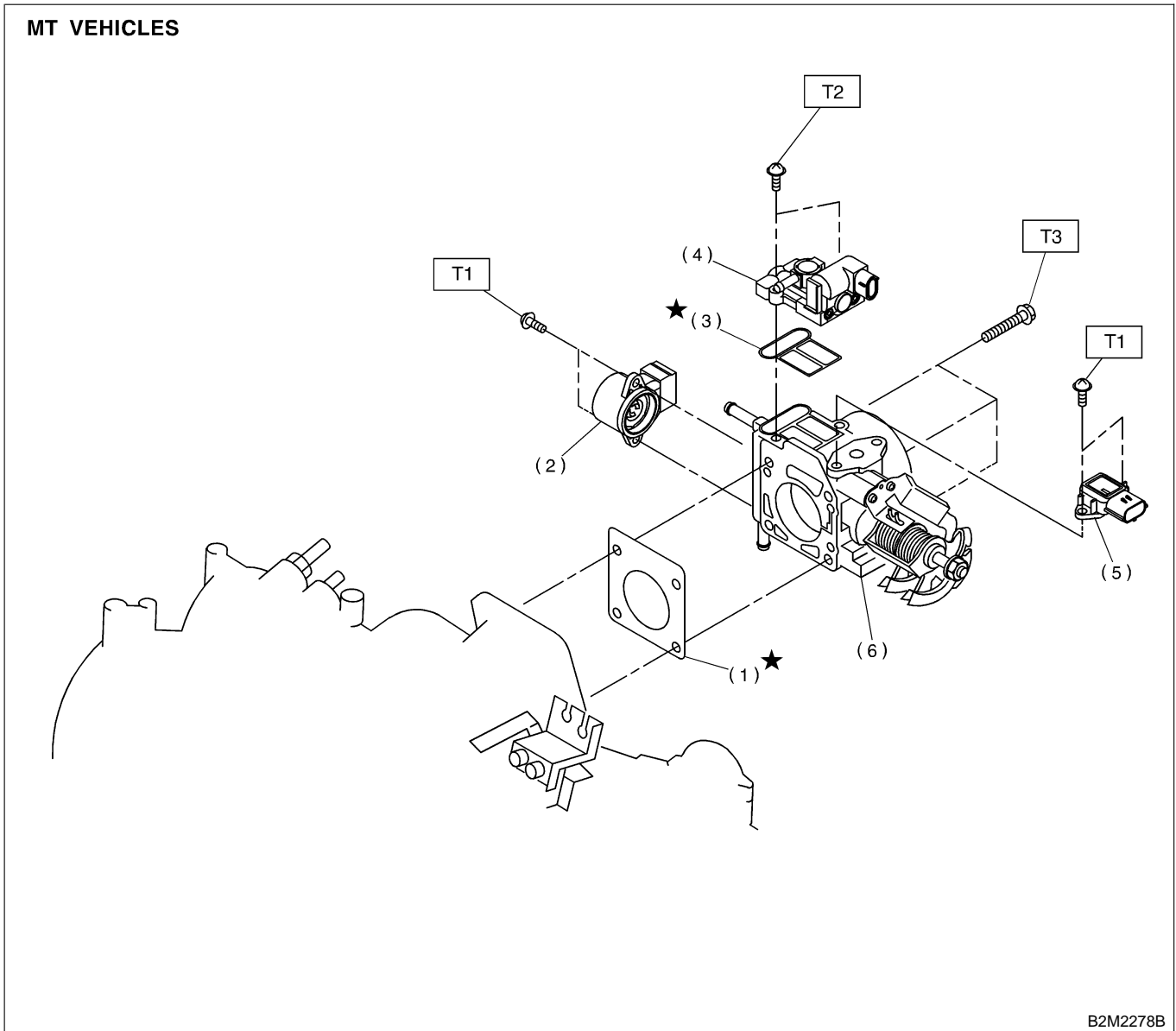
---

**Tightening torque: N-m (kgf-m, ft-lb)****T1: 3.4 (0.35, 2.5)****T2: 5.0 (0.51, 3.7)****T3: 6.4 (0.65, 4.7)****T4: 19 (0.19, 1.4)****T5: 22.5 (2.29, 16.6)****T6: 25 (2.6, 18.8)**

---

## 2. AIR INTAKE SYSTEM S105001A0502

### MT VEHICLES



B2M2278B

- |                                     |                                     |
|-------------------------------------|-------------------------------------|
| (1) Gasket                          | (5) Intake manifold pressure sensor |
| (2) Throttle position sensor        | (6) Throttle body                   |
| (3) Gasket                          |                                     |
| (4) Idle air control solenoid valve |                                     |

**Tightening torque: N·m (kgf·m, ft·lb)**

**T1: 1.6 (0.16, 1.2)**

**T2: 2.8 (0.29, 2.1)**

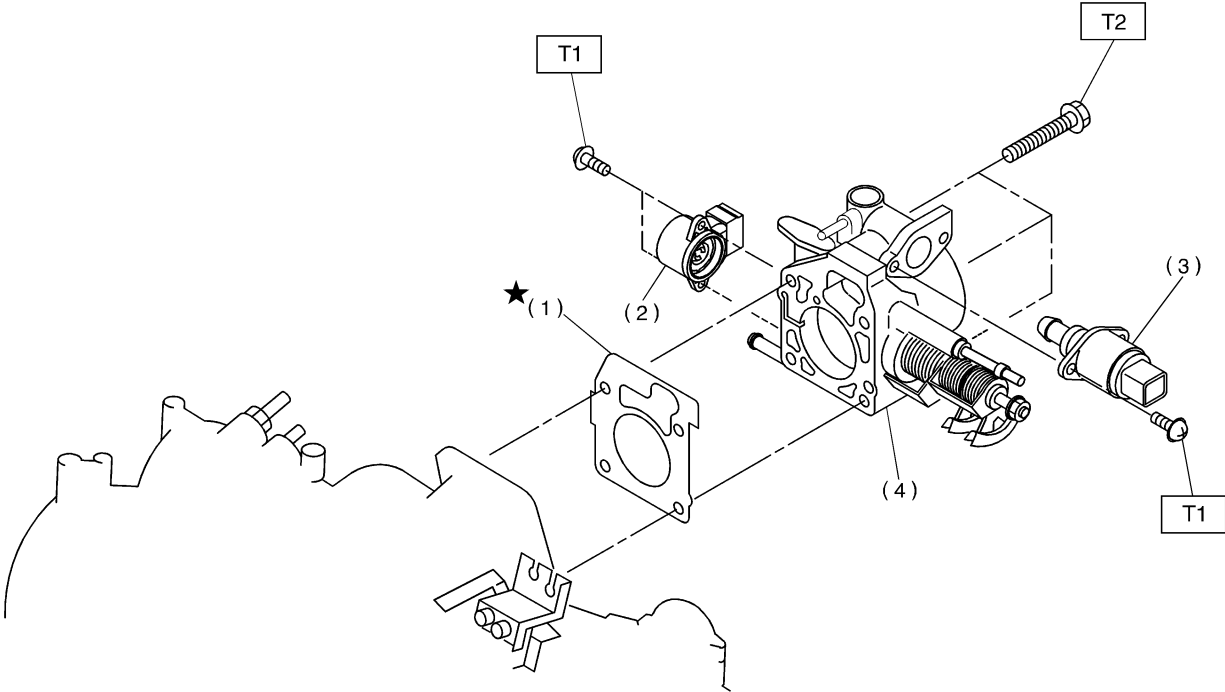
**T3: 22 (2.2, 15.9)**

**FU(H4)-7**

# GENERAL DESCRIPTION

Fuel Injection (Fuel Systems)

## AT VEHICLES



B2M3455B

- (1) Gasket
- (2) Throttle position sensor
- (3) Idle air control solenoid valve

- (4) Throttle body

**Tightening torque: N-m (kgf-m, ft-lb)**

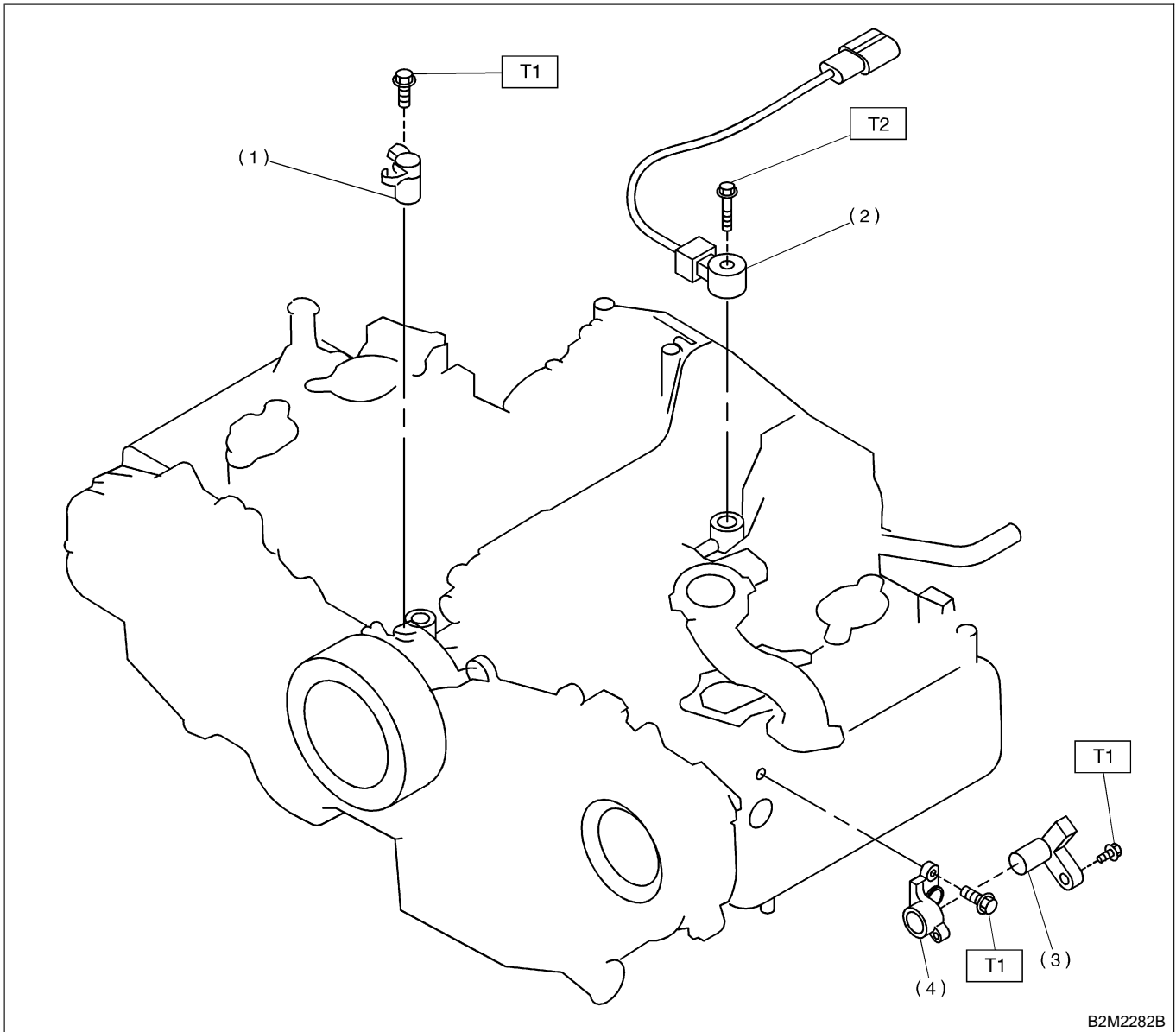
**T1: 1.6 (0.16, 1.2)**

**T2: 22 (2.2, 16)**

**FU(H4)-8**

## 3. CRANKSHAFT POSITION, CAMSHAFT POSITION AND KNOCK SENSORS

S105001A0503



B2M2282B

- (1) Crankangle position sensor
- (2) Knock sensor
- (3) Camshaft position sensor
- (4) Camshaft position sensor support

**Tightening torque: N·m (kgf·m, ft·lb)**

**T1: 6.4 (0.65, 4.7)**

**T2: 23.5 (2.4, 17.4)**

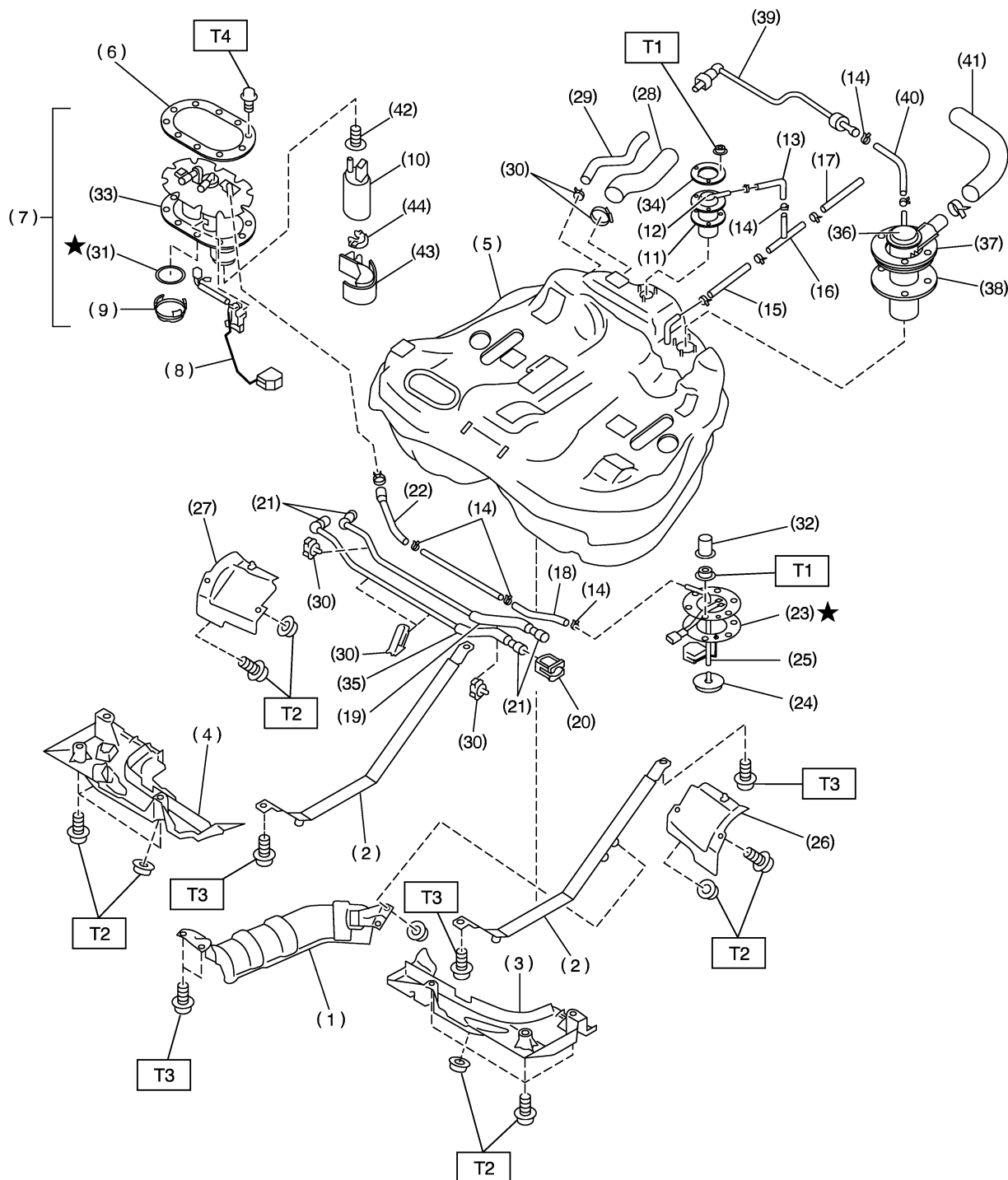


# GENERAL DESCRIPTION

Fuel Injection (Fuel Systems)

## 4. FUEL TANK

S105001A0504



B2M3662A

FU(H4)-10

# GENERAL DESCRIPTION

## Fuel Injection (Fuel Systems)

(1) Heat sealed cover	(18) Jet pump hose A	(35) Fuel delivery tube
(2) Fuel tank band	(19) Fuel return tube	(36) Vent valve
(3) Protector LH (Front)	(20) Retainer	(37) Vent valve plate
(4) Protector RH (Front)	(21) Quick connector	(38) Vent valve gasket
(5) Fuel tank	(22) Jet pump hose B	(39) Evaporation tube
(6) Fuel pump plate	(23) Fuel sub level sensor gasket	(40) Evaporation hose D
(7) Fuel pump ASSY	(24) Jet pump filter	(41) Air vent hose
(8) Fuel level sensor	(25) Fuel sub level sensor	(42) Seal
(9) Cap	(26) Protector LH (Rear)	(43) Fuel pump holder
(10) Fuel pump	(27) Protector RH (Rear)	(44) Grommet
(11) Fuel cut valve gasket	(28) Fuel filler hose	
(12) Fuel cut valve	(29) Fuel tank pressure sensor hose	
(13) Evaporation hose A	(30) Clamp	
(14) Clip	(31) Gasket	
(15) Evaporation hose C	(32) Cap	
(16) Joint pipe	(33) Gasket	
(17) Evaporation hose B	(34) Fuel cut valve plate	

---

**Tightening torque: N·m (kgf-m, ft-lb)****T1: 4.4 (0.45, 3.3)****T2: 18 (1.8, 13.0)****T3: 33 (3.4, 25)****T4: 5.9 (0.6, 4.3)**

---



# GENERAL DESCRIPTION

## Fuel Injection (Fuel Systems)

(1) Clamp	(22) Air vent pipe	(43) Drain filter
(2) Fuel delivery hose A	(23) Evaporation hose J	(44) Drain filter hose A
(3) Fuel filter bracket	(24) Evaporation hose K	(45) Drain valve hose
(4) Fuel filter holder	(25) Evaporation hose L	(46) Drain filter hose B
(5) Fuel filter cup	(26) Fuel tank pressure sensor hose	(47) Pressure control solenoid valve
(6) Fuel filter	(27) Fuel filler hose	(48) Evaporation hose O
(7) Evaporation hose F	(28) Evaporation pipe B	(49) Evaporation pipe C
(8) Clip	(29) Fuel tank pressure sensor	(50) Pipe protector
(9) Fuel delivery hose B	(30) Fuel filler pipe	(51) Evaporation hose P
(10) Fuel return hose	(31) Ring A	(52) Pressure control solenoid valve hose
(11) Fuel pipe ASSY	(32) Fuel filler cap	(53) Canister front bracket
(12) Fuel delivery hose C	(33) Ring B	
(13) Fuel return hose C	(34) Packing	
(14) Evaporation hose G	(35) Shut valve	
(15) Clamp	(36) Evaporation hose M	
(16) Grommet	(37) Evaporation hose N	
(17) Fuel pipe ASSY	(38) Canister	
(18) Air vent hose A	(39) Canister lower bracket	
(19) Evaporation hose H	(40) Cushion rubber	
(20) Evaporation hose I	(41) Canister upper bracket	
(21) Air vent hose B	(42) Drain valve	

---

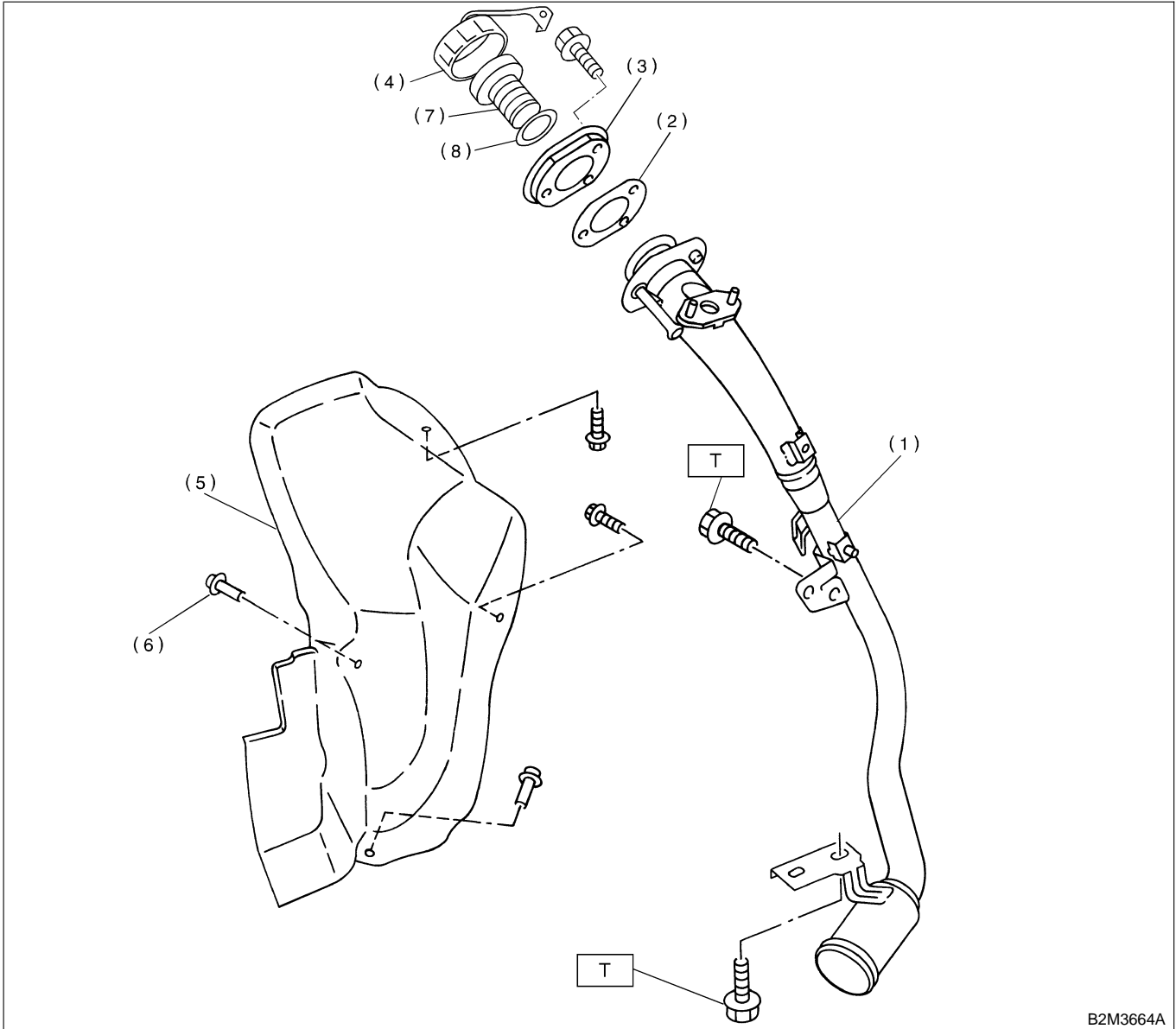
**Tightening torque: N·m (kgf-m, ft-lb)****T1: 4.5 (0.46, 3.3)****T2: 7.5 (0.76, 5.5)****T3: 18 (1.8, 13.0)****T4: 23 (2.3, 16.6)****T5: 33 (3.4, 25)**

---

# GENERAL DESCRIPTION

Fuel Injection (Fuel Systems)

## 6. FUEL FILLER PIPE S105001A0506



- (1) Fuel filler pipe ASSY
- (2) Filler pipe packing
- (3) Filler ring
- (4) Filler cap

- (5) Filler pipe protector
- (6) Clip
- (7) Ring A
- (8) Ring B

**Tightening torque: N·m (kgf·m, ft·lb)**  
**T: 7.5 (0.75, 5.4)**

**FU(H4)-14**

# GENERAL DESCRIPTION

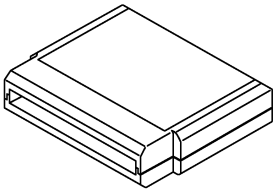

Fuel Injection (Fuel Systems)

## C: CAUTION S105001A03

- Wear working clothing, including a cap, protective goggles, and protective shoes during operation.
- Remove contamination including dirt and corrosion before removal, installation or disassembly.
- Keep the disassembled parts in order and protect them from dust or dirt.
- Before removal, installation or disassembly, be sure to clarify the failure. Avoid unnecessary removal, installation, disassembly, and replacement.

- Be careful not to burn your hands, because each part on the vehicle is hot after running.
- Be sure to tighten fasteners including bolts and nuts to the specified torque.
- Place shop jacks or safety stands at the specified points.
- Before disconnecting electrical connectors of sensors or units, be sure to disconnect negative terminal from battery.
- Place "NO FIRE" signs near the working area.
- Be careful not to spill fuel on the floor.

## D: PREPARATION TOOL S105001A17

ILLUSTRATION	TOOL NUMBER	DESCRIPTION	REMARKS
 <p style="text-align: center;">B2M3876</p>	24082AA150	CARTRIDGE	
 <p style="text-align: center;">B2M3877</p>	22771AA030	SELECT MONITOR KIT	Troubleshooting for electrical systems. <ul style="list-style-type: none"> <li>● English: 22771AA030 (Without printer)</li> <li>● German: 22771AA070 (Without printer)</li> <li>● French: 22771AA080 (Without printer)</li> <li>● Spanish: 22771AA090 (Without printer)</li> </ul>