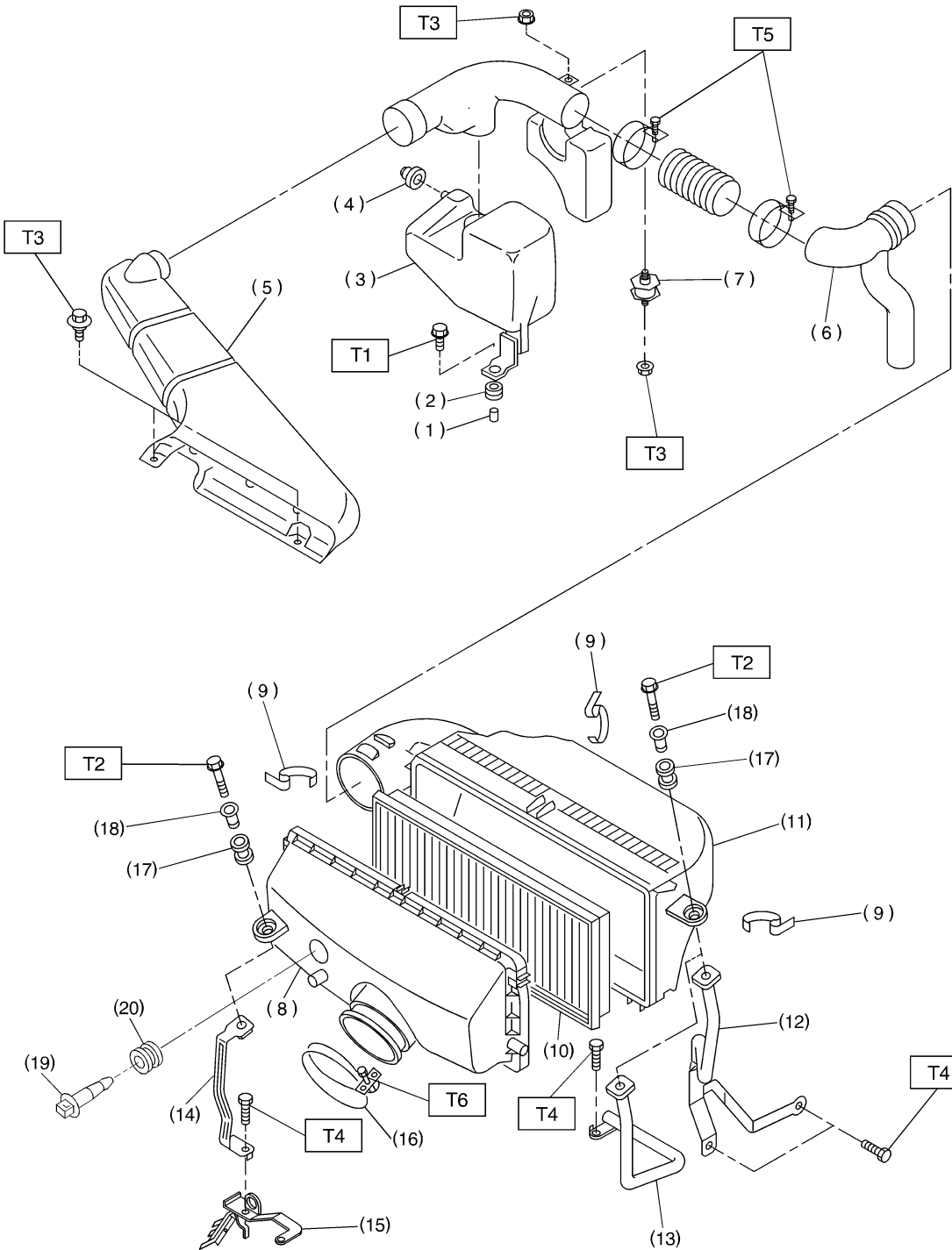


GENERAL DESCRIPTION

Intake (Induction)

1. General Description S104001

A: COMPONENT S104001A05



B2M3456A

IN(H4)-2

GENERAL DESCRIPTION

Intake (Induction)

- | | |
|--------------------------|---|
| (1) Spacer | (12) Air cleaner case stay LH (MT vehicles) |
| (2) Bush | (13) Air cleaner case stay LH (AT vehicles) |
| (3) Resonator chamber | (14) Air cleaner case stay RH |
| (4) Cushion rubber | (15) Engine harness bracket |
| (5) Air intake duct A | (16) Clamp |
| (6) Air intake duct B | (17) Bush |
| (7) Cushion | (18) Spacer |
| (8) Air cleaner case A | (19) Intake air temperature sensor |
| (9) Clip | (20) Rubber bush |
| (10) Air cleaner element | |
| (11) Air cleaner case B | |

Tightening torque: N-m (kgf-m, ft-lb)

T1: 32.3 (3.3, 23.9)

T2: 6.4 (0.65, 4.7)

T3: 7.5 (0.76, 5.5)

T4: 16 (1.6, 11.6)

T5: 2.5 (0.25, 1.8)

T6: 2.9 (0.3, 2.2)

GENERAL DESCRIPTION

Intake (Induction)

B: CAUTION S104001A03

- Wear working clothing, including a cap, protective goggles, and protective shoes during operation.
- Remove contamination including dirt and corrosion before removal, installation or disassembly.
- Keep the disassembled parts in order and protect them from dust or dirt.
- Before removal, installation or disassembly, be sure to clarify the failure. Avoid unnecessary removal, installation, disassembly, and replacement.
- Be careful not to burn your hands, because each part on the vehicle is hot after running.
- Be sure to tighten fasteners including bolts and nuts to the specified torque.
- Place shop jacks or safety stands at the specified points.
- Before disconnecting electrical connectors of sensor or units, be sure to disconnect negative terminal from battery.

IN(H4)-4