

# GENERAL DESCRIPTION

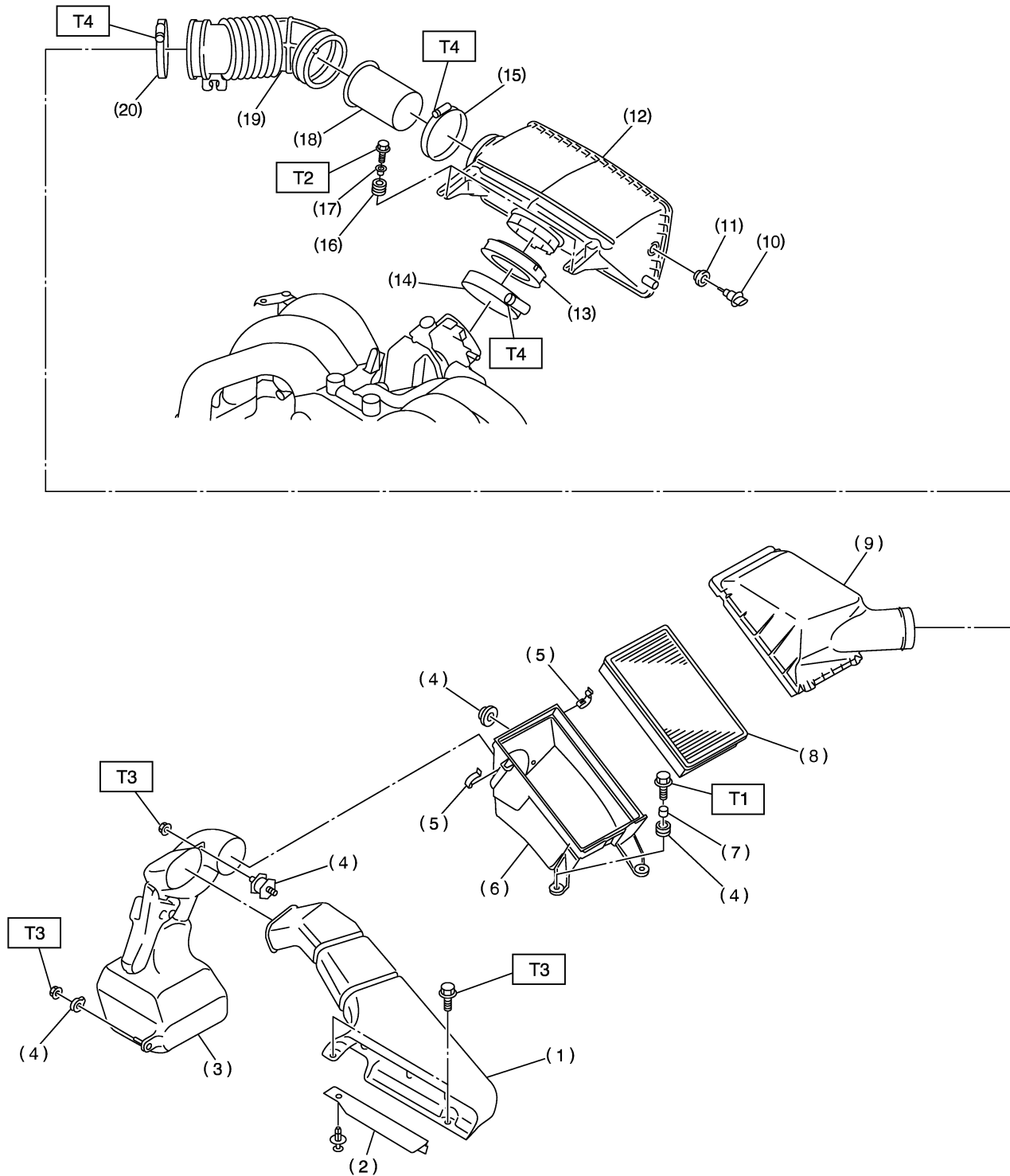
Intake (Induction)

## 1. General Description

S144001

### A: COMPONENT

S144001A05



B2M4400A

# GENERAL DESCRIPTION

Intake (Induction)

- (1) Air intake duct
- (2) Plate
- (3) Resonator chamber
- (4) Cushion
- (5) Clip
- (6) Air cleaner lower case
- (7) Spacer
- (8) Air cleaner element
- (9) Air cleaner upper cover

- (10) Intake air temperature sensor
- (11) Grommet
- (12) Air intake chamber
- (13) Grommet
- (14) Clamp
- (15) Clamp
- (16) Cushion
- (17) Spacer
- (18) Intake duct

- (19) Air intake boot
- (20) Clamp

---

***Tightening torque: N·m (kgf·m, ft·lb)***

***T1: 32.3 (3.3, 23.9)***

***T2: 6.4 (0.65 4.7)***

***T3: 7.5 (0.76, 5.5)***

***T4: 3 (0.3, 2.2)***

---

## GENERAL DESCRIPTION

Intake (Induction)

---

### **B: CAUTION** S144001A03

- Wear working clothing, including a cap, protective goggles, and protective shoes during operation.
- Remove contamination including dirt and corrosion before removal, installation or disassembly.
- Keep the disassembled parts in order and protect them from dust or dirt.
- Before removal, installation or disassembly, be sure to clarify the failure. Avoid unnecessary removal, installation, disassembly, and replacement.
- Be careful not to burn your hands, because each part on the vehicle is hot after running.
- Be sure to tighten fasteners including bolts and nuts to the specified torque.
- Place shop jacks or safety stands at the specified points.
- Before disconnecting electrical connectors of sensor or units, be sure to disconnect negative terminal from battery.