

GENERAL DESCRIPTION

Lubrication

1. General Description S148001

A: SPECIFICATIONS S148001E49

Lubrication method		Forced lubrication		
Oil pump	Pump type	Trochoid type		
	Number of teeth	Inner rotor	9	
		Outer rotor	10	
	Outer rotor diameter × thickness		78 × 11 mm (3.07 × 0.43 in)	
	Tip clearance between inner and outer rotor	STANDARD	0.04 — 0.14 mm (0.0016 — 0.0055 in)	
		LIMIT	0.18 mm (0.0071 in)	
	Side clearance between inner rotor and pump case	STANDARD	0.02 — 0.07 mm (0.0008 — 0.0028 in)	
		LIMIT	0.15 mm (0.0059 in)	
Case clearance between outer rotor and pump case	STANDARD	0.10 — 0.18 mm (0.0039 — 0.0071 in)		
	LIMIT	0.25 mm (0.0098 in)		
Oil filter	Type	Full-flow filter type		
	Filtration area	1,000 cm ² (155 sq in)		
	By-pass valve opening pressure	157 kPa (1.6 kg/cm ² , 23 psi)		
	Outer diameter × width	80 × 70 mm (3.15 × 2.76 in)		
	Oil filter to engine thread size	M 20 × 1.5		
Relief valve (on rocker shaft) operation pressure		69 kPa (0.7 kg/cm ² , 10 psi)		
Oil pressure switch	Type	Immersed contact point type		
	Working voltage — wattage	12 V — 3.4 W or less		
	Warning light activation pressure	14.7 kPa (0.15 kg/cm ² , 2.1 psi)		
	Proof pressure	More than 981 kPa (10 kg/cm ² , 142 psi)		
Oil capacity (includes oil filter)		5.8 ℓ (6.1 US qt, 5.1 Imp qt)		

GENERAL DESCRIPTION

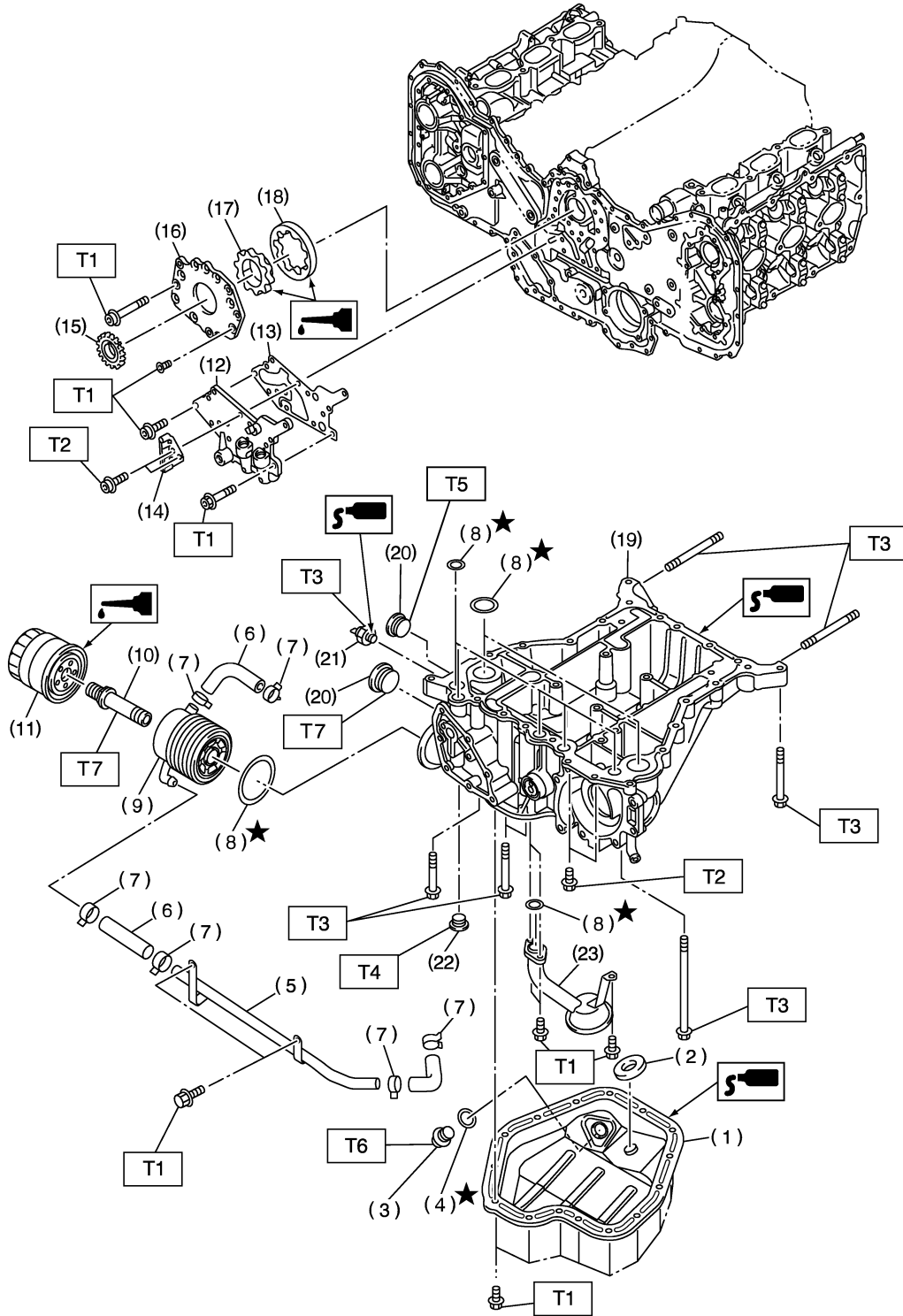
Lubrication

MEMO:

LU(H6)-3

GENERAL DESCRIPTION

B: COMPONENT S148001A05



B2M4533A

GENERAL DESCRIPTION

Lubrication

-
- | | |
|---------------------|-------------------------------|
| (1) Oil pan lower | (12) Relief valve case |
| (2) Magnet | (13) Relief valve case gasket |
| (3) Drain plug | (14) Chain guide (center) |
| (4) O-ring | (15) Crank sprocket |
| (5) Oil cooler pipe | (16) Oil pump cover |
| (6) Hose | (17) Inner rotor |
| (7) Clamp | (18) Outer rotor |
| (8) O-ring | (19) Oil pan upper |
| (9) Oil cooler | (20) Plug |
| (10) Connector | (21) Oil pressure switch |
| (11) Oil filter | (22) Plug |

- (23) Oil strainer

Tightening torque: N·m (kgf-m, ft-lb)

T1: 6.4 (0.65, 4.7)

T2: 7.8 (0.80, 5.8)

T3: 18 (1.8, 13)

T4: 34 (3.5, 25)

T5: 37 (3.8, 27)

T6: 44 (4.5, 33)

T7: 90 (9.2, 67)

GENERAL DESCRIPTION

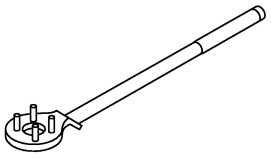
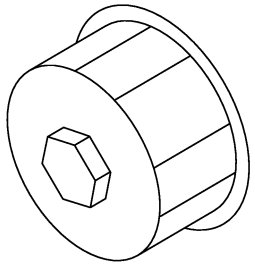
Lubrication

C: CAUTION S148001A03

- Wear working clothing, including a cap, protective goggles, and protective shoes during operation.
- Remove contamination including dirt and corrosion before removal, installation or disassembly.
- Keep the disassembled parts in order and protect them from dust or dirt.
- Before removal, installation or disassembly, be sure to clarify the failure. Avoid unnecessary removal, installation, disassembly, and replacement.

- Be careful not to burn your hands, because each part in the vehicle is hot after running.
- Be sure to tighten fasteners including bolts and nuts to the specified torque.
- Place shop jacks or safety stands at the specified points.
- Before disconnecting electrical connectors of sensors or units, be sure to disconnect negative terminal from battery.

D: PREPARATION TOOL S148001A17

ILLUSTRATION	TOOL NUMBER	DESCRIPTION	REMARKS
 <p style="text-align: right;">B2M3870</p>	499977100	CRANK PULLEY WRENCH	Used for stopping rotation of crankshaft pulley when loosening and tightening crankshaft pulley bolt.
 <p style="text-align: right;">B2M3872</p>	498547000	OIL FILTER WRENCH	Used for removing and installing oil filter.

GENERAL DESCRIPTION

Lubrication

MEMO:

LU(H6)-7