

GENERAL DESCRIPTION

Clutch System

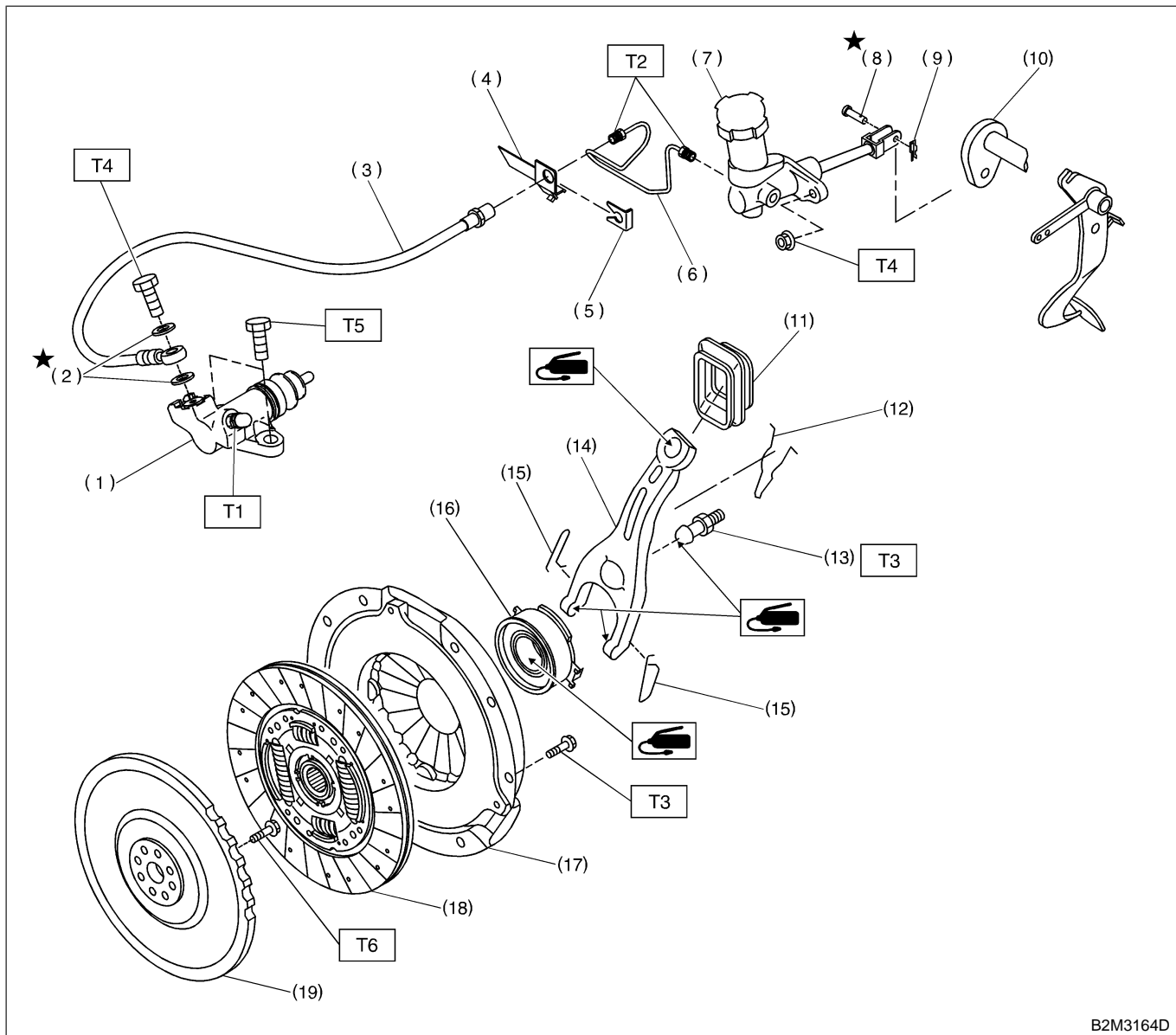
1. General Description SS04001

A: SPECIFICATIONS SS04001E49

| | | |
|----------------------------|------------------------------------|---------------------------------------|
| Clutch cover | Diaphragm set load kg (lb) | 580 (1,279) |
| Clutch disc | Facing material | Woven |
| | O.D. × I.D. × thickness mm (in) | 225 × 150 × 3.5 (8.86 × 5.91 × 0.138) |
| | Spline O.D. (No. of teeth) mm (in) | 25.2 (0.992) (24) |
| | Depth of rivet head mm (in) | Limit of sinking 0.3 (0.012) |
| | Limit for runout mm (in) | 1.0 (0.039) at R = 107 (4.21) |
| Clutch release lever ratio | | 1.6 |
| Release bearing | | Grease-packed self-aligning |
| Release lever | Stroke mm (in) | 12 — 13.6 (0.472 — 0.535) |
| Clutch pedal | Full stroke mm (in) | 130 — 135 (5.12 — 5.31) |
| | Free play mm (in) | 4 — 13 (0.16 — 0.51) |

B: COMPONENT S504001A05

1. CLUTCH SYSTEM S504001A0501



B2M3164D

- | | |
|--------------------------|-----------------------------------|
| (1) Operating cylinder | (11) Clutch release lever sealing |
| (2) Washer | (12) Retainer spring |
| (3) Clutch hose | (13) Pivot |
| (4) Bracket | (14) Release lever |
| (5) Clip | (15) Clip |
| (6) Pipe | (16) Release bearing |
| (7) Master cylinder ASSY | (17) Clutch cover |
| (8) Clevis pin | (18) Clutch disc |
| (9) Snap pin | (19) Flywheel |
| (10) Lever | |

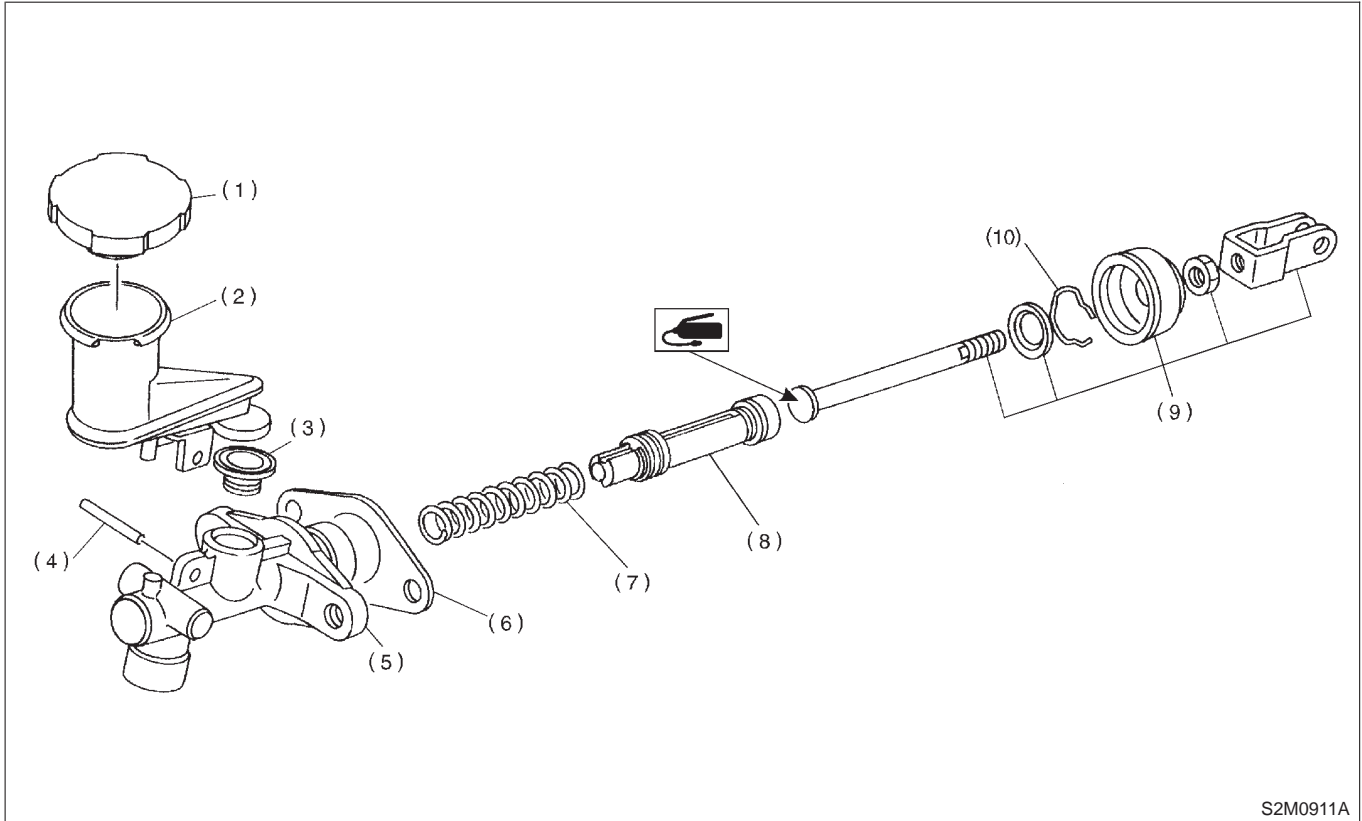
Tightening torque: N-m (kgf-m, ft-lb)

- T1: 8 (0.8, 5.8)**
T2: 15 (1.5, 11)
T3: 15.7 (1.6, 11.6)
T4: 18 (1.8, 13.0)
T5: 37 (3.8, 27.5)
T6: 72 (7.3, 52.8)

GENERAL DESCRIPTION

Clutch System

2. MASTER CYLINDER SS04001A0502

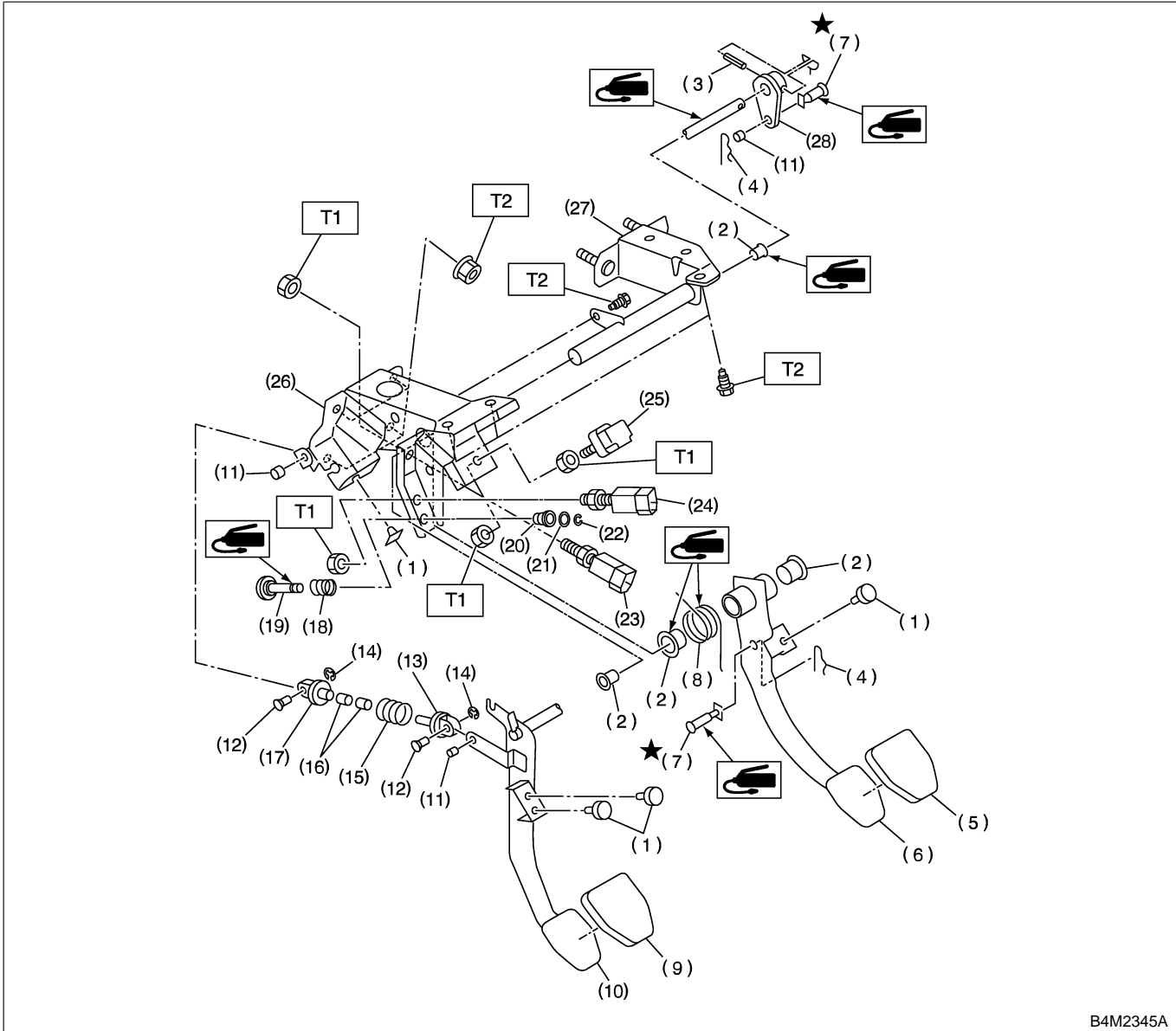


S2M0911A

- | | | |
|--------------------|---------------------|-----------------------|
| (1) Reservoir cap | (5) Master cylinder | (9) Push rod |
| (2) Reservoir tank | (6) Seat | (10) Piston stop ring |
| (3) Oil seal | (7) Return spring | |
| (4) Straight pin | (8) Piston | |

CL-4

3. CLUTCH PEDAL S504001A0503



B4M2345A

- | | | |
|------------------------|--|--|
| (1) Stopper | (13) Assist rod A | (24) Clutch switch (With cruise control) |
| (2) Bushing | (14) Clip | (25) Stop light switch |
| (3) Spring pin | (15) Assist spring | (26) Pedal bracket |
| (4) Snap pin | (16) Assist bushing | (27) Clutch master cylinder bracket |
| (5) Brake pedal pad | (17) Assist rod B | (28) Lever |
| (6) Brake pedal | (18) Spring S | |
| (7) Clevis pin | (19) Rod S | |
| (8) Brake pedal spring | (20) Bushing S | |
| (9) Clutch pedal pad | (21) O-ring | |
| (10) Clutch pedal | (22) Clip | |
| (11) Bushing C | (23) Clutch switch (Starter interlock) | |
| (12) Clutch clevis pin | | |

Tightening torque: N-m (kgf-m, ft-lb)

T1: 8 (0.8, 5.8)

T2: 18 (1.8, 13.0)

GENERAL DESCRIPTION

Clutch System

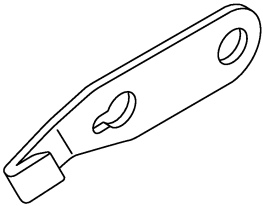
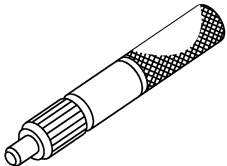
C: CAUTION S504001A03

- Wear working clothing, including a cap, protective goggles, and protective shoes during operation.
- Remove contamination including dirt and corrosion before removal, installation or disassembly.
- Keep the disassembled parts in order and protect them from dust or dirt.
- Before removal, installation or disassembly, be sure to clarify the failure. Avoid unnecessary removal, installation, disassembly, and replacement.
- Be careful not to burn your hands, because each part on the vehicle is hot after running.
- Use SUBARU genuine fluid, grease etc. or the equivalent. Do not mix fluid, grease etc. with that of another grade or from other manufacturers.

- Be sure to tighten fasteners including bolts and nuts to the specified torque.
- Place shop jacks or safety stands at the specified points.
- Apply grease onto sliding or revolution surfaces before installation.
- Before installing O-rings or snap rings, apply sufficient amount of fluid to avoid damage and deformation.
- Before securing a part on a vice, place cushioning material such as wood blocks, aluminum plate, or shop cloth between the part and the vice.
- Keep fluid away from the vehicle body. If any fluid contacts the vehicle body, immediately flush the area with water.
- Refer to CAUTION in the "AT" section for removal of transmission.

D: PREPARATION TOOL S504001A17

1. SPECIAL TOOLS S504001A1701

| ILLUSTRATION | TOOL NUMBER | DESCRIPTION | REMARKS |
|---|-------------|--------------------|---|
|  <small>B2M3853</small> | 498497100 | CRANKSHAFT STOPPER | Used for stopping rotation of flywheel when loosening tightening bolt, etc. |
|  <small>B2M4112</small> | 499747100 | CLUTCH DISC GUIDE | Used when installing clutch disc to flywheel. |

2. GENERAL PURPOSE TOOLS S504001A1702

| TOOL NAME | REMARKS |
|----------------|--|
| Circuit tester | Used for measuring resistance, voltage and ampere. |
| Dial gauge | Used for measuring clutch disk run-out. |