

# CLUTCH SWITCH

Clutch System

## 11. Clutch Switch S504258

### A: REMOVAL S504258A18

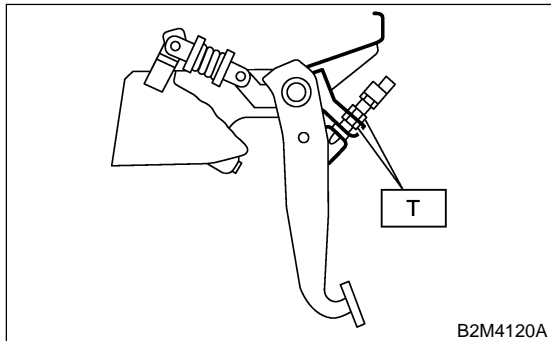
- 1) Remove battery ground terminal.
- 2) Disconnect connector from clutch switch.
- 3) Remove clutch switch.

### B: INSTALLATION S504258A11

Install in the reverse order of removal.

#### Tightening torque:

**T: 8 N·m (0.8 kgf-m, 5.8 ft-lb)**

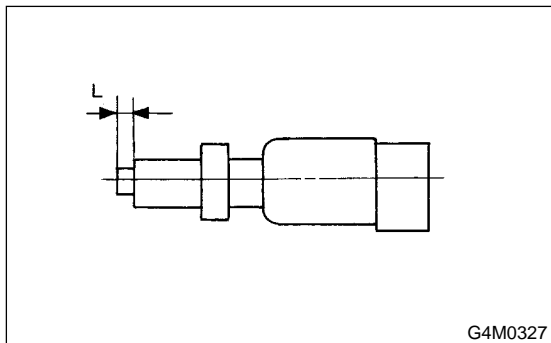


### C: INSPECTION S504258A10

- 1) If clutch switch does not operate properly (or if it does not stop at the specified position), replace with new one.

#### Specified position: L

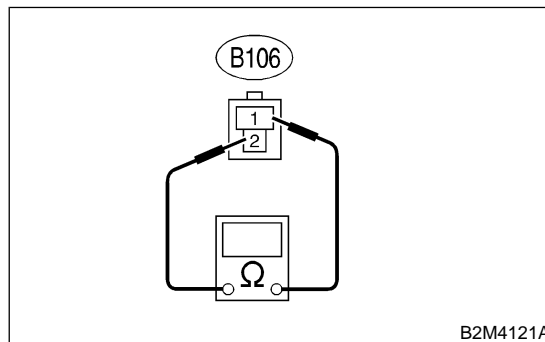
$2^{+1.5}/_0 \text{ mm (} 0.079^{+0.059}/_0 \text{ in)}$



- 2) Check clutch switch continuity. If continuity is not as specified, replace the switch.

Switch position	Tester connection	Specified condition
Switch pin free	1 — 2	Continuity
Switch pin pushed in		No continuity

- Clutch switch (Starter interlock)



- Clutch switch (With cruise control)

