

GENERAL DESCRIPTION

Control Systems

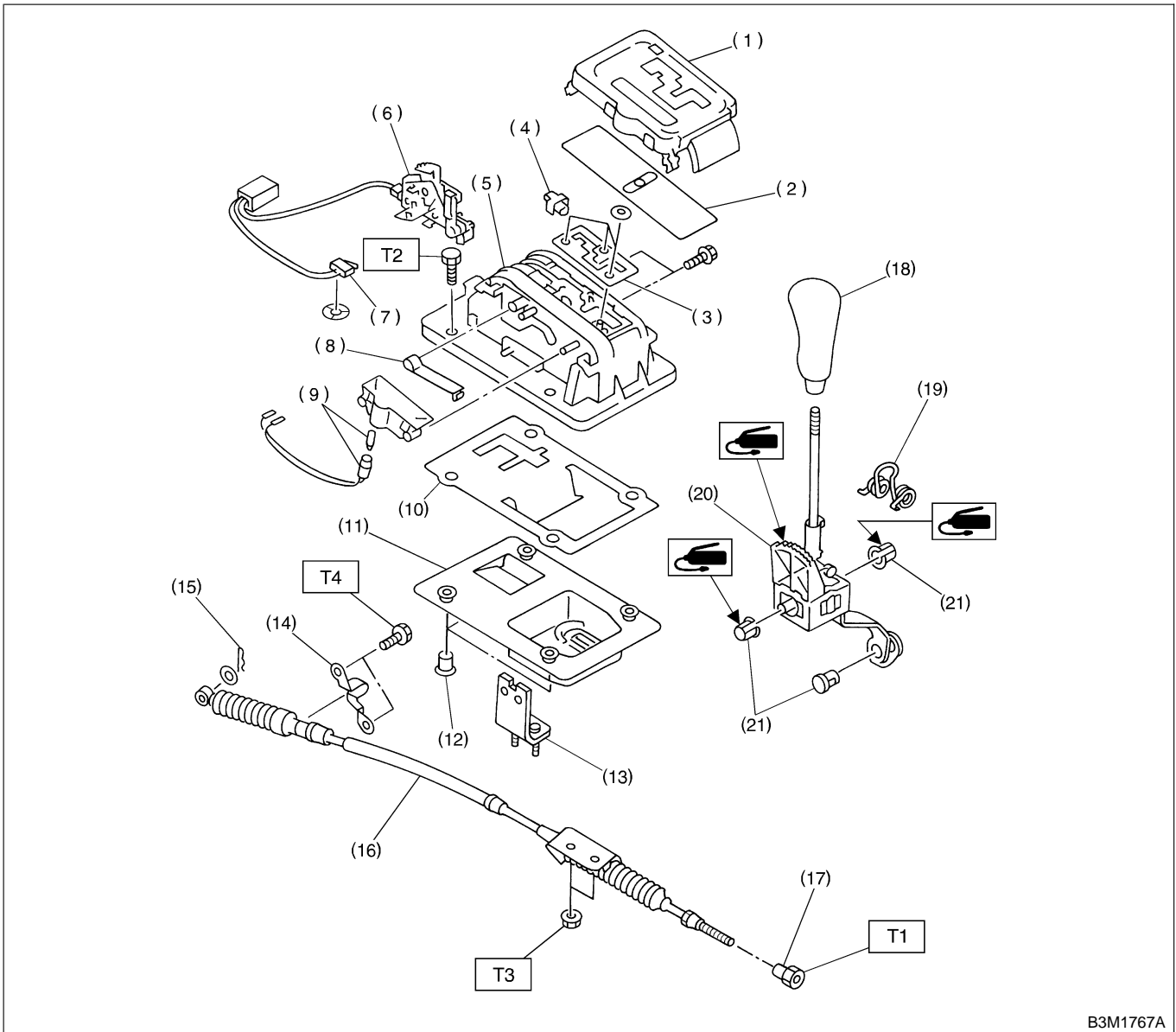
1. General Description SS01001

A: SPECIFICATIONS SS01001E49

Item	Specification
Vibration torque of rod against lever N·m (kgf-m, ft-lb)	0.7 (0.07, 0.5) or less

B: COMPONENT SS01001A05

1. AT SELECT LEVER SS01001A0501



B3M1767A

- | | |
|-------------------------|------------------------|
| (1) Indicator cover | (11) Rubber boot |
| (2) Slider | (12) Washer |
| (3) Pattern plate | (13) Cable bracket |
| (4) Stopper | (14) Cable clamp |
| (5) Frame | (15) Snap pin |
| (6) Solenoid ASSY | (16) Outer cable |
| (7) "P" position switch | (17) Nut |
| (8) Detent spring | (18) Grip |
| (9) Illumination bulb | (19) Spring |
| (10) Plate | (20) Select lever ASSY |

- (21) Bush

Tightening torque: N-m (kgf-m, ft-lb)

T1: 7.5 (0.76, 5.5)

T2: 13 (1.3, 9.4)

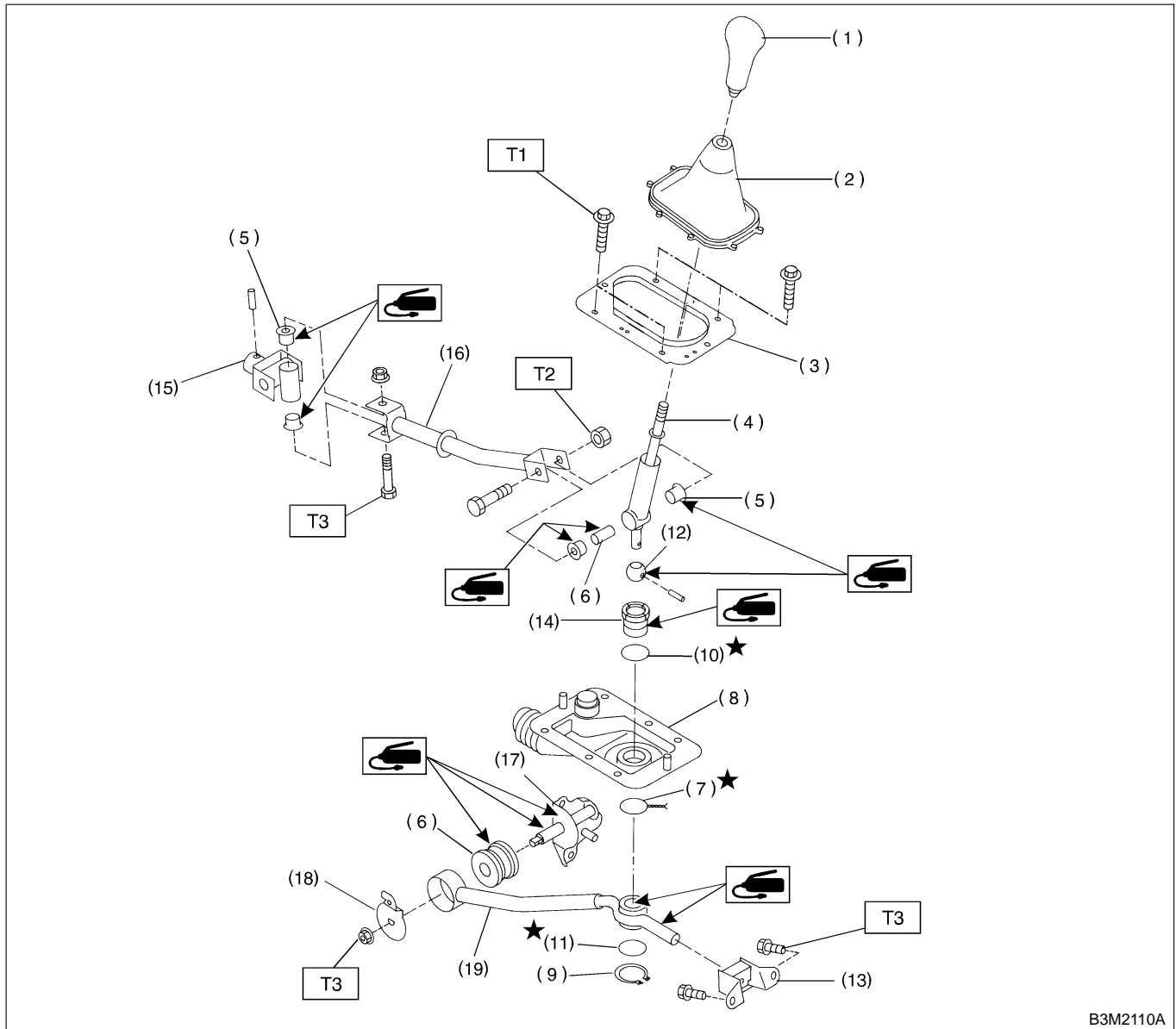
T3: 18 (1.8, 13.0)

T4: 33 (3.4, 25)

GENERAL DESCRIPTION

Control Systems

2. MT GEAR SHIFT LEVER S501001A0502



B3M2110A

- (1) Gear shift knob
- (2) Console boot
- (3) Boot plate
- (4) Lever
- (5) Bush
- (6) Bush (Stay front)
- (7) Locking wire
- (8) Boot
- (9) Snap ring

- (10) O-ring A
- (11) O-ring B
- (12) Bush (Shift lever)
- (13) Cushion rubber
- (14) Bush (Stay rear)
- (15) Joint
- (16) Rod
- (17) Bracket
- (18) Washer

- (19) Stay

Tightening torque: N-m (kgf-m, ft-lb)

T1: 7.5 (0.76, 5.5)

T2: 12 (1.2, 8.7)

T3: 18 (1.8, 13.0)

C: CAUTION S501001A03

- Wear working clothing, including a cap, protective goggles, and protective shoes during operation.
- Remove contamination including dirt and corrosion before removal, installation or disassembly.
- Keep the disassembled parts in order and protect them from dust or dirt.
- Before removal, installation or disassembly, be sure to clarify the failure. Avoid unnecessary removal, installation, disassembly, and replacement.
- Use SUBARU genuine grease etc. or the equivalent. Do not mix grease etc. with that of another grade or from other manufacturers.

- Be sure to tighten fasteners including bolts and nuts to the specified torque.
- Place shop jacks or safety stands at the specified points.
- Apply grease onto sliding or revolution surfaces before installation.
- Before installing O-rings or snap rings, apply sufficient amount of grease to avoid damage and deformation.
- Before securing a part on a vice, place cushioning material such as wood blocks, aluminum plate, or shop cloth between the part and the vice.
- Before disconnecting electrical connectors, be sure to disconnect negative terminal from battery.

D: PREPARATION TOOL S501001A17

1. GENERAL PURPOSE TOOLS S501001A1701

TOOL NAME	REMARKS
Circuit tester	Used for measuring resistance, voltage and ampere.