

# GENERAL DESCRIPTION

Parking Brake

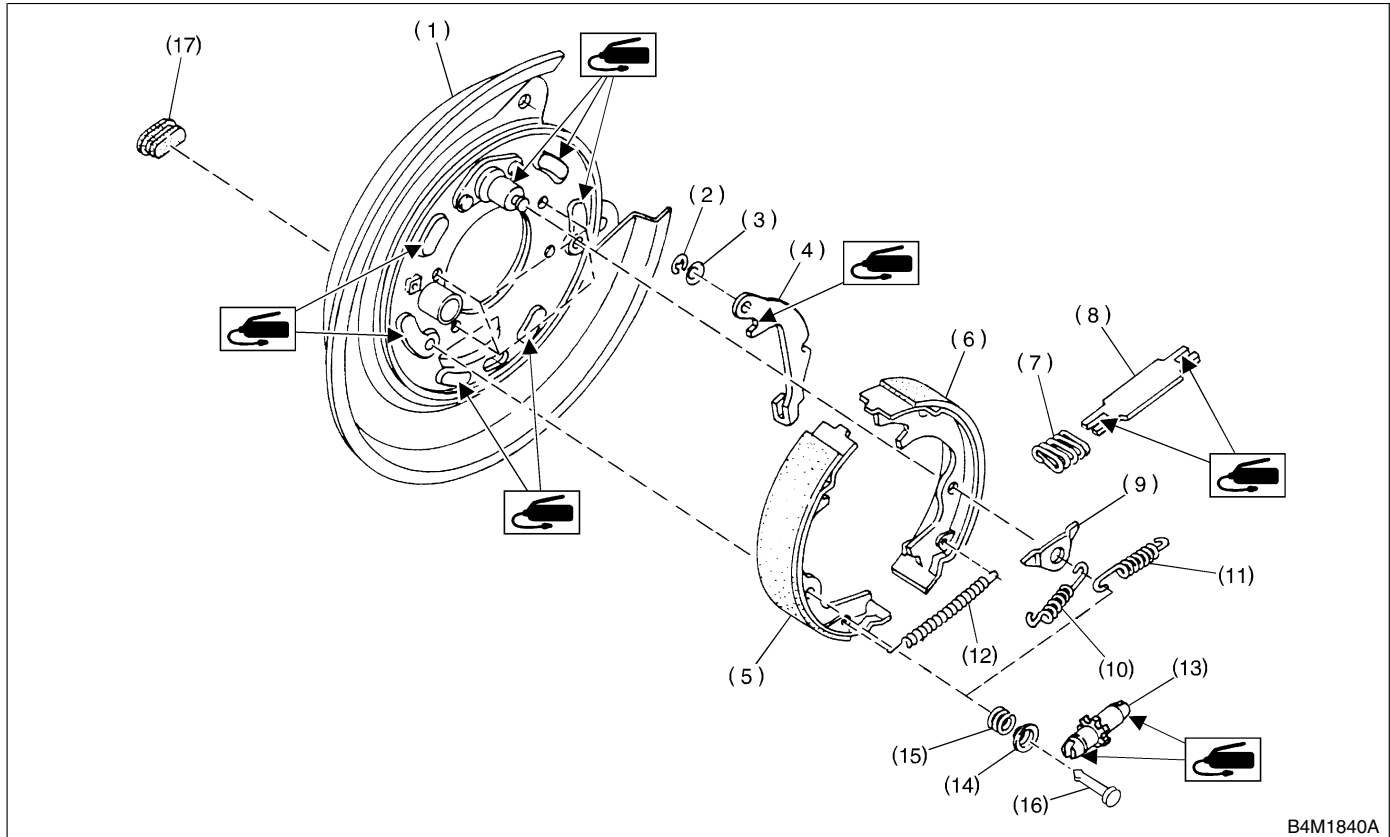
## 1. General Description S404001

### A: SPECIFICATIONS S404001E49

Type		Mechanical on rear brakes, drum in disc
Effective drum diameter	mm (in)	170 (6.69)
Lining dimensions (length × width × thickness)	mm (in)	162.6 × 30.0 × 3.2 (6.40 × 1.181 × 0.126)
Clearance adjustment		Manual adjustment
Lever stroke	notches/N (kgf, lb)	7 to 8/196 (20, 44)

### B: COMPONENT S404001A05

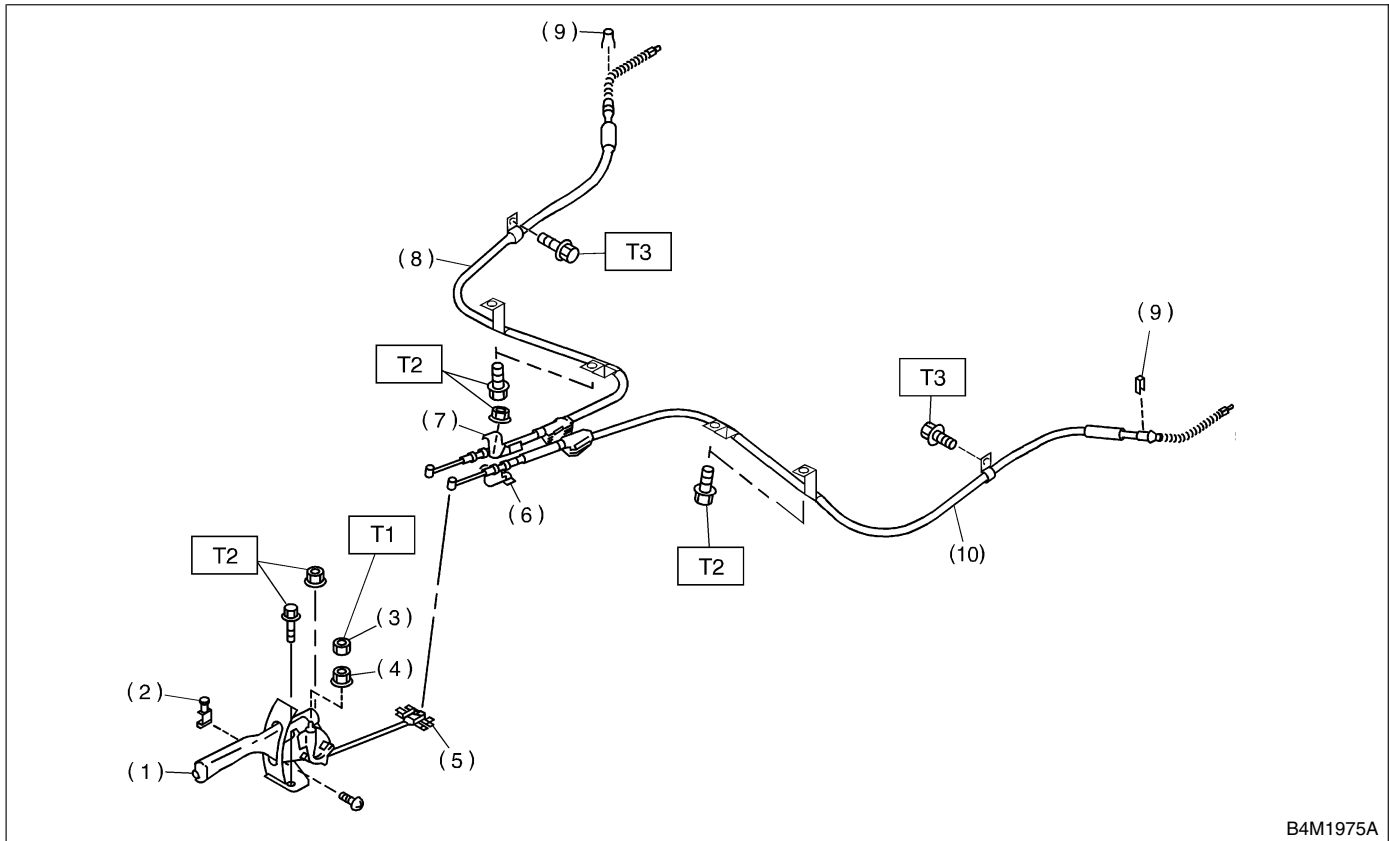
#### 1. PARKING BRAKE S404001A0503



B4M1840A

- |                                    |                              |                            |
|------------------------------------|------------------------------|----------------------------|
| (1) Back plate                     | (7) Strut spring             | (13) Adjuster              |
| (2) Retainer                       | (8) Strut                    | (14) Shoe hold-down cup    |
| (3) Spring washer                  | (9) Shoe guide plate         | (15) Shoe hold-down spring |
| (4) Lever                          | (10) Primary return spring   | (16) Shoe hold-down pin    |
| (5) Parking brake shoe (Primary)   | (11) Secondary return spring | (17) Adjusting hole cover  |
| (6) Parking brake show (Secondary) | (12) Adjusting spring        |                            |

## 2. PARKING BRAKE CABLE S404001A0502



- |                          |  |
|--------------------------|--|
| (1) Parking brake lever  | (7) Clamp                              |
| (2) Parking brake switch | (8) Parking brake cable RH             |
| (3) Lock nut             | (9) Clamp (Rear disc brake model only) |
| (4) Adjusting nut        | (10) Parking brake cable LH            |
| (5) Equalizer            |  |
| (6) Bracket              |  |

**Tightening torque: N·m (kgf·m, ft·lb)**

**T1: 5.9 (0.60, 4.3)**

**T2: 18 (1.8, 13.0)**

**T3: 32 (3.3, 24)**

### C: CAUTION S404001A03

- Wear working clothing, including a cap, protective goggles, and protective shoes during operation.
- Remove contamination including dirt and corrosion before removal, installation or disassembly.
- Keep the disassembled parts in order and protect them from dust or dirt.
- Before removal, installation or disassembly, be sure to clarify the failure. Avoid unnecessary removal, installation, disassembly, and replacement.
- Be careful not to burn your hands, because each part on the vehicle is hot after running.
- Use SUBARU genuine grease etc. or the equivalent. Do not mix grease etc. with that of another grade or from other manufacturers.
- Be sure to tighten fasteners including bolts and nuts to the specified torque.
- Place shop jacks or safety stands at the specified points.

- Apply grease onto sliding or revolution surfaces before installation.
- Before installing O-rings or snap rings, apply sufficient amount of grease to avoid damage and deformation.
- Before securing a part on a vise, place cushioning material such as wood blocks, aluminum plate, or shop cloth between the part and the vise.
- Keep grease etc. away from parking brake shoes.