

# GENERAL DESCRIPTION

VDC

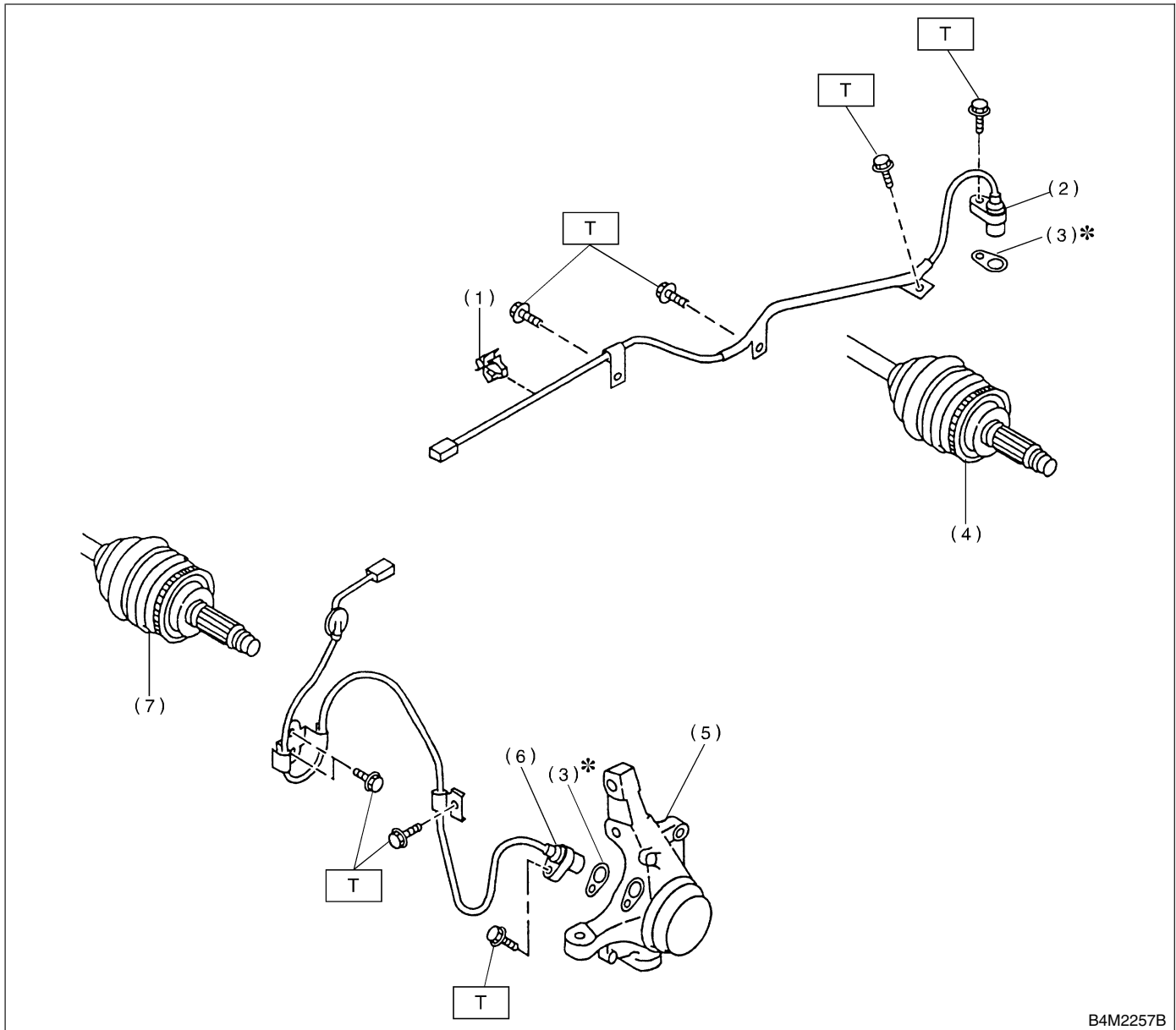
## 1. General Description S402001

### A: SPECIFICATIONS S402001E49

Item		Standard or remarks	
ABS sensor	ABS sensor gap	Front	0.3 — 0.8 mm (0.012 — 0.031 in)
		Rear	0.44 — 0.94 mm (0.0173 — 0.0370 in)
	ABS sensor resistance		1.25±0.25 kΩ
	Marks of the harness	Front LH	Brown
		Front RH	Light blue
		Rear LH	Yellow
Rear RH		White	
Yaw rate and lateral G sensor	Lateral G sensor voltage	2.5±0.2 V	
VDC hydraulic control unit marks		D2	
VDC control module marks		P	

**B: COMPONENT** S402001A05

**1. ABS SENSOR** S402001A0501



B4M2257B

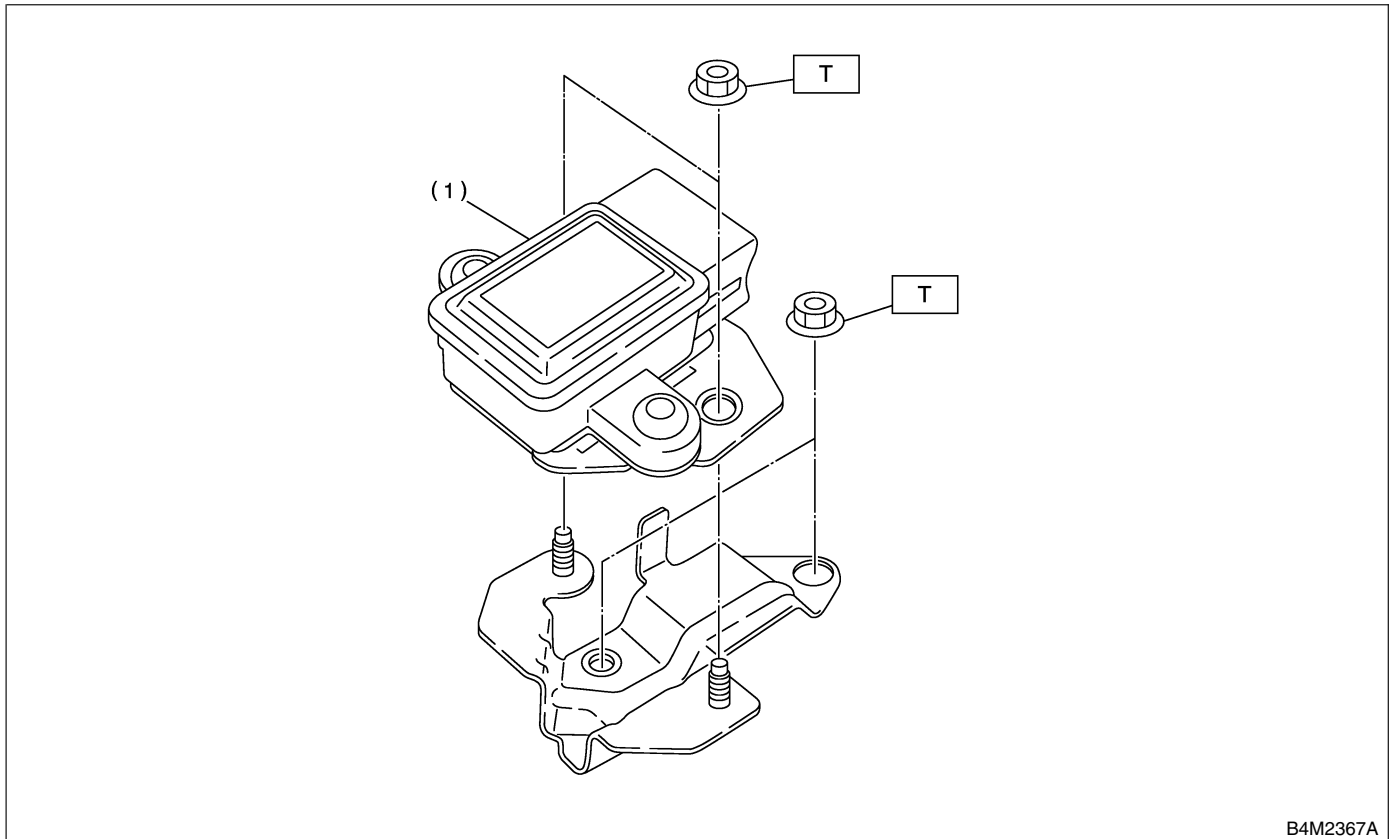
- |                       |                        |
|-----------------------|------------------------|
| (1) Clip              | (5) Housing            |
| (2) Rear ABS sensor   | (6) Front ABS sensor   |
| (3) ABS spacer        | (7) Tone wheel (Front) |
| (4) Tone wheel (Rear) |                        |

**Tightening torque: N·m (kgf·m, ft·lb)**  
**T: 32 (3.3, 24)**

# GENERAL DESCRIPTION

VDC

## 2. YAW RATE AND LATERAL G SENSOR S402001A0507



B4M2367A

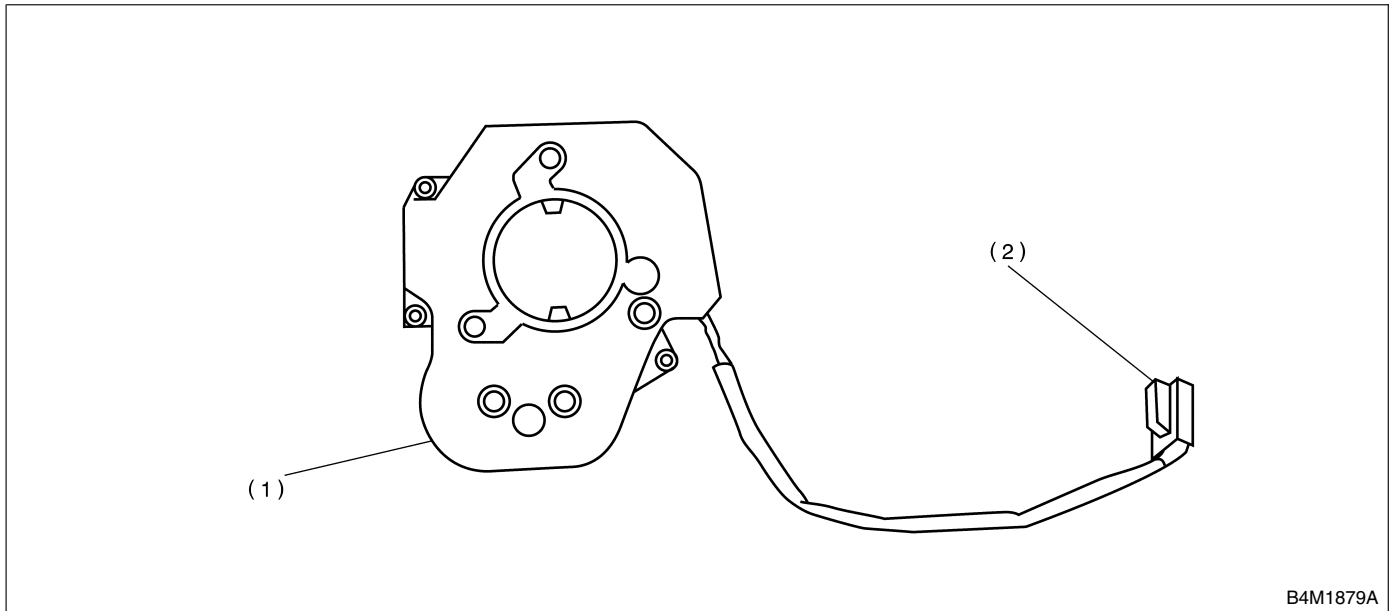
(1) Yaw rate and lateral G sensor

---

**Tightening torque: N·m (kgf·m, ft·lb)**  
**T: 7.5 (0.76, 5.5)**

---

## 3. STEERING ANGLE SENSOR S402001A0504



B4M1879A

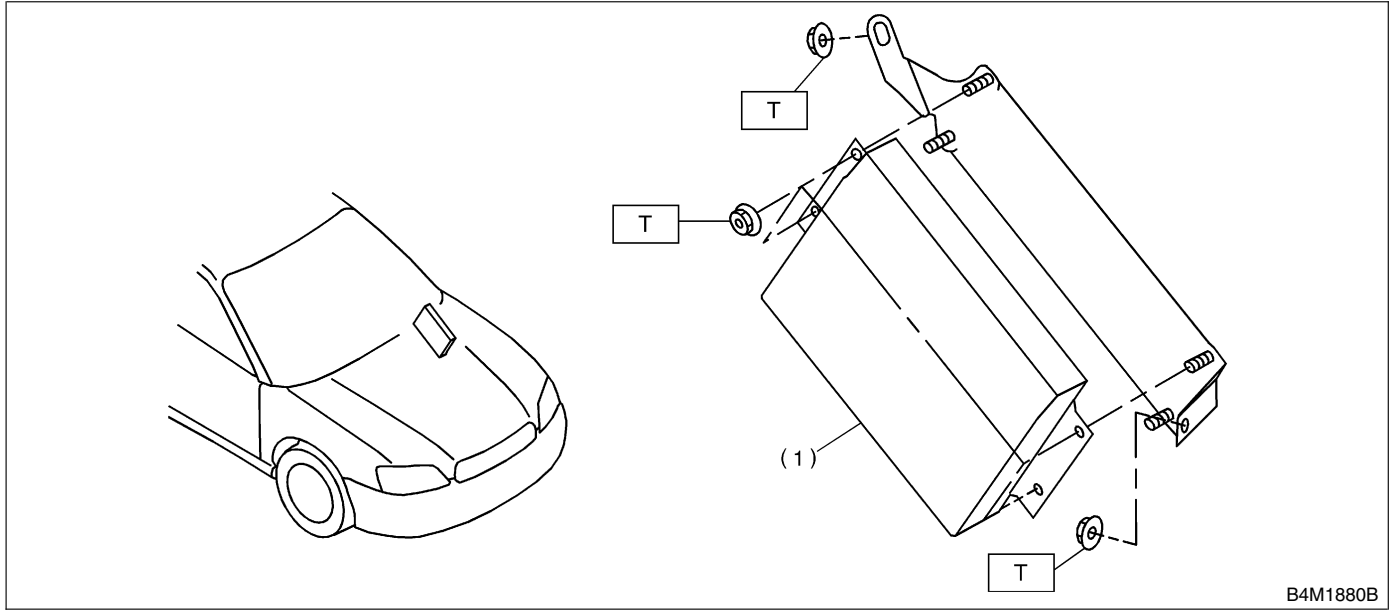
(1) Steering angle sensor

(2) Connector

# GENERAL DESCRIPTION

VDC

## 4. VDC CONTROL MODULE (VDCCM) S402001A0505

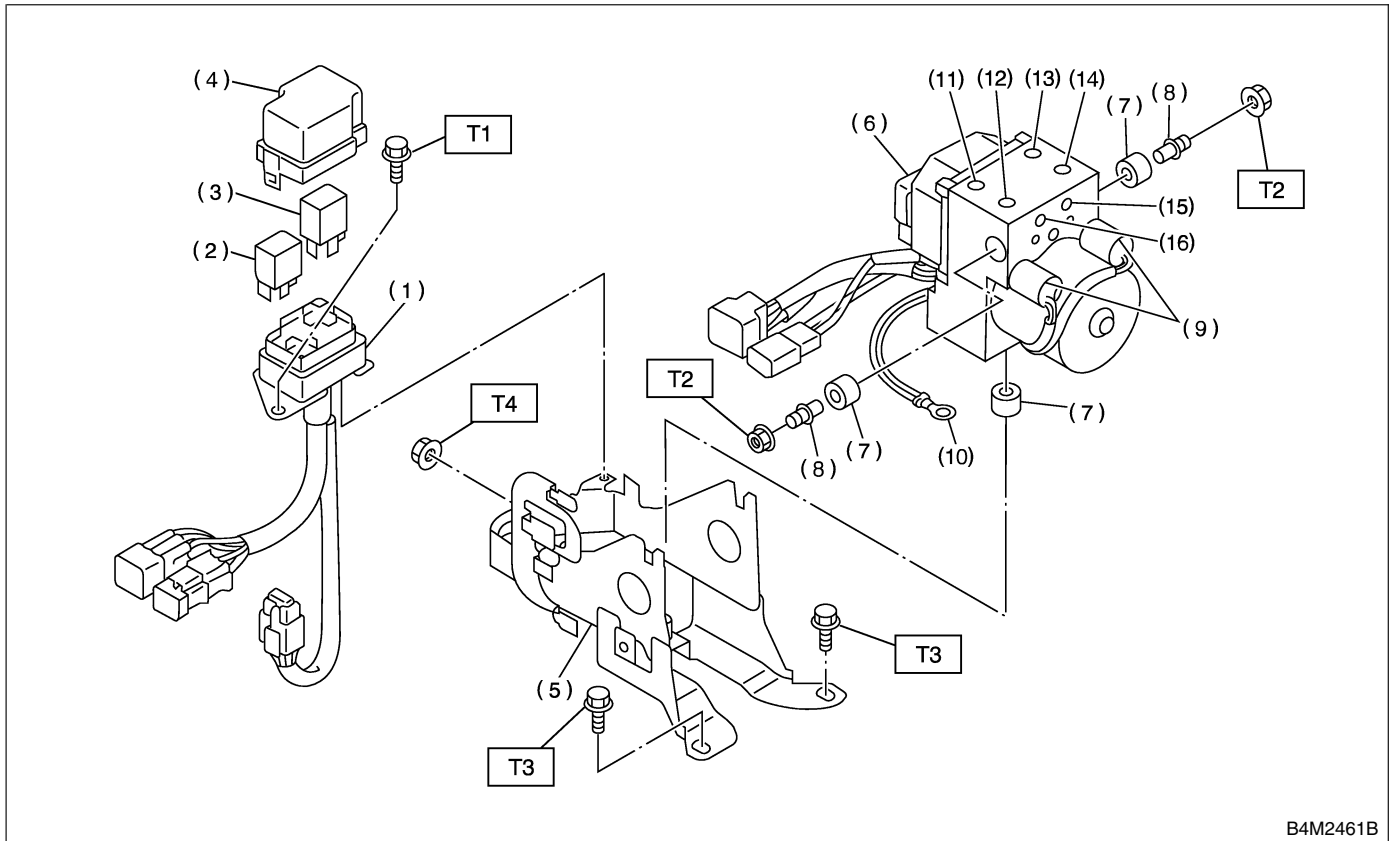


B4M1880B

(1) VDC control module

**Tightening torque: N·m (kgf·m, ft·lb)**  
**T: 7.5 (0.76, 5.5)**

## 5. HYDRAULIC CONTROL UNIT (H/U) S402001A0506



B4M2461B

- |                            |                      |
|----------------------------|----------------------|
| (1) Relay box              | (9) Pressure sensor  |
| (2) Motor relay            | (10) Ground terminal |
| (3) Valve relay            | (11) Front-LH outlet |
| (4) Cap                    | (12) Secondary inlet |
| (5) Bracket                | (13) Front-RH outlet |
| (6) Hydraulic control unit | (14) Primary inlet   |
| (7) Damper                 | (15) Rear-LH outlet  |
| (8) Stud bolt              | (16) Rear-RH outlet  |

**Tightening torque: N·m (kgf·m, ft·lb)**

**T1: 13 (1.3, 9.4)**

**T2: 18 (1.8, 13.0)**

**T3: 33 (3.4, 24.6)**

**T4: 38 (3.9, 28.2)**

# GENERAL DESCRIPTION

VDC

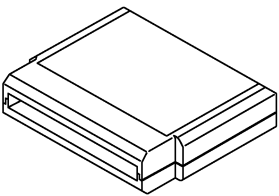

## C: CAUTION S402001A03

- Wear working clothing, including, a cap, protective goggles, and protective shoes during operation.
- Remove contamination including dirt and corrosion before removal, installation or disassembly.
- Keep the disassembled parts in order and protect them from dust or dirt.
- Before removal, installation or disassembly, be sure to clarify the failure. Avoid unnecessary removal, installation, disassembly, and replacement.

- Be careful not to burn your hands, because each part on the vehicle is hot after running.
- Be sure to tighten fasteners including bolts and nuts to the specified torque.
- Place shop jacks or safety stands at the specified points.
- Before disconnecting electrical connectors of sensors or units, be sure to disconnect ground cable from battery.

## D: PREPARATION TOOL S402001A17

### 1. SPECIAL TOOLS S402001A1701

ILLUSTRATION	TOOL NUMBER	DESCRIPTION	REMARKS
 <p style="text-align: center;">B2M3876</p>	24082AA190	CARTRIDGE	Troubleshooting for electrical systems.
 <p style="text-align: center;">B2M3877</p>	22771AA030	SELECT MONITOR KIT	Troubleshooting for electrical systems. <ul style="list-style-type: none"> <li>● English: 22771AA030 (Without printer)</li> <li>● German: 22771AA070 (Without printer)</li> <li>● French: 22771AA080 (Without printer)</li> <li>● Spanish: 22771AA090 (Without printer)</li> </ul>

### 2. GENERAL PURPOSE TOOLS S402001A1702

TOOL NAME	REMARKS
Circuit tester	Used for measuring resistance, voltage and ampere.
Pressure gauge	Used for measuring oil pressure.
Oscilloscope	Used for measuring sensor.