

# GENERAL DESCRIPTION

Fuel Injection (Fuel Systems)

## 1. General Description S175001

### A: SPECIFICATIONS S175001E49

Model		
Fuel tank	Capacity	64 ℓ (16.9 US gal, 14.1 Imp gal)
	Location	Under rear seat
Fuel pump	Type	Impeller
	Shutoff discharge pressure	370 — 677 kPa (3.77 — 6.9 kg/cm <sup>2</sup> , 53.6 — 98 psi)
	Discharge flow	More than 65 ℓ (17.2 US gal, 14.3 Imp gal)/h [12 V at 300 kPa (3.06 kg/cm <sup>2</sup> , 43.5 psi)]
Fuel filter		Cartridge type

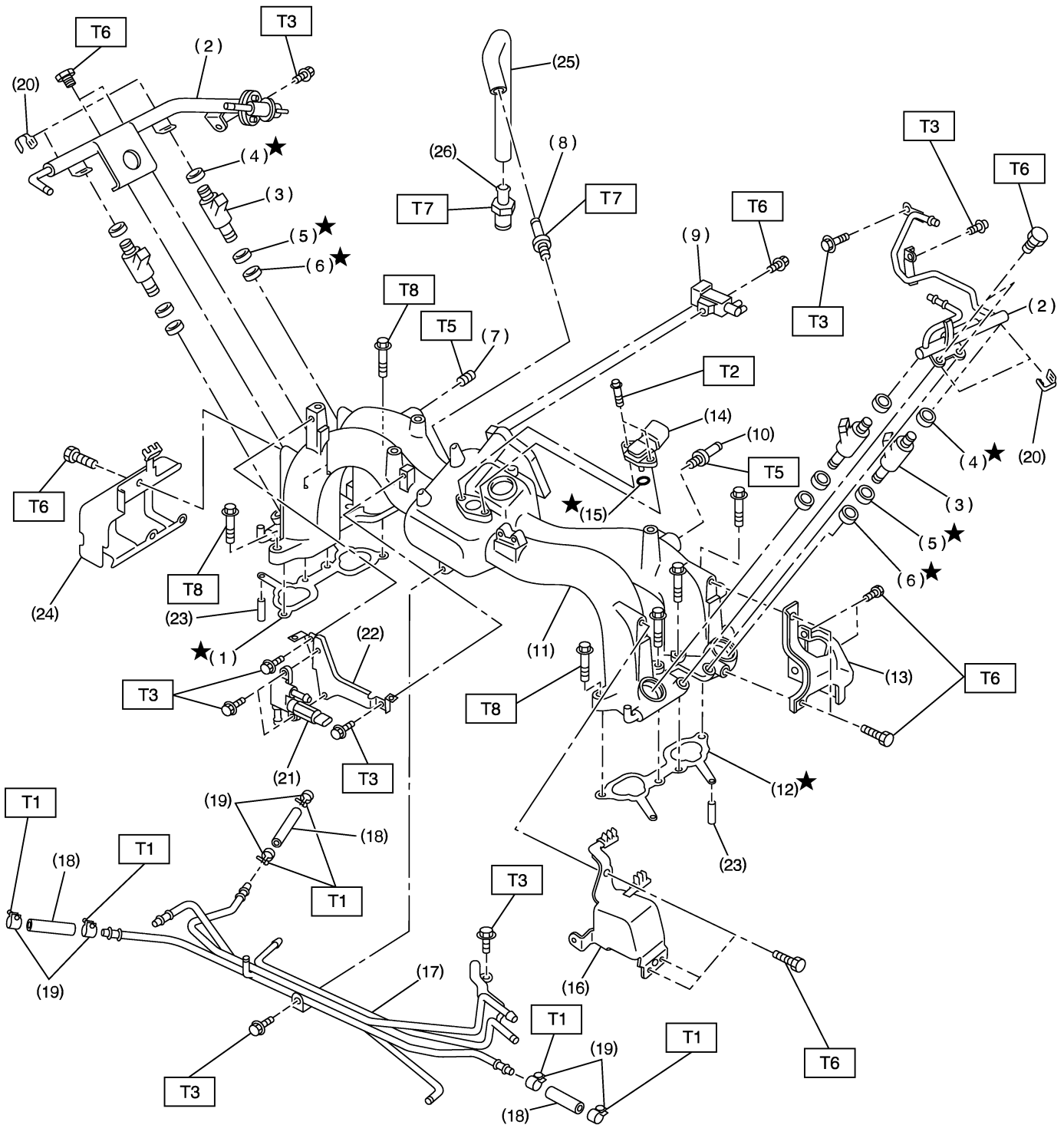
**MEMO:**

# GENERAL DESCRIPTION

Fuel Injection (Fuel Systems)

## B: COMPONENT S175001A05

### 1. INTAKE MANIFOLD S175001A0501



B2M4593A

# GENERAL DESCRIPTION

Fuel Injection (Fuel Systems)

- 
- |                                    |   |
|------------------------------------|---|
| (1) Intake manifold gasket RH      | (14) Intake air temperature and pressure sensor |
| (2) Fuel injector pipe             | (15) O-ring                                     |
| (3) Fuel injector                  | (16) Fuel pipe protector LH (front)             |
| (4) O-ring                         | (17) Fuel pipe ASSY                             |
| (5) O-ring                         | (18) Fuel hose                                  |
| (6) O-ring                         | (19) Clip                                       |
| (7) Plug                           | (20) Clip                                       |
| (8) Nipple                         | (21) Air assist injector solenoid valve         |
| (9) Purge control solenoid valve   | (22) Air assist injector solenoid valve bracket |
| (10) Nipple                        | (23) Guide pin                                  |
| (11) Intake manifold               | (24) Fuel pipe protector RH                     |
| (12) Intake manifold gasket LH     |   |
| (13) Fuel pipe protector LH (rear) |   |

- |                |
|----------------|
| (25) PCV hose  |
| (26) PCV valve |

---

**Tightening torque: N-m (kgf-m, ft-lb)**

**T1: 1.5 (0.15, 1.1)**

**T2: 3.4 (0.35, 2.5)**

**T3: 5.0 (0.51, 3.7)**

**T4: 6.4 (0.65, 4.7)**

**T5: 17 (1.7, 12)**

**T6: 19 (0.19, 1.4)**

**T7: 22.5 (2.29, 16.6)**

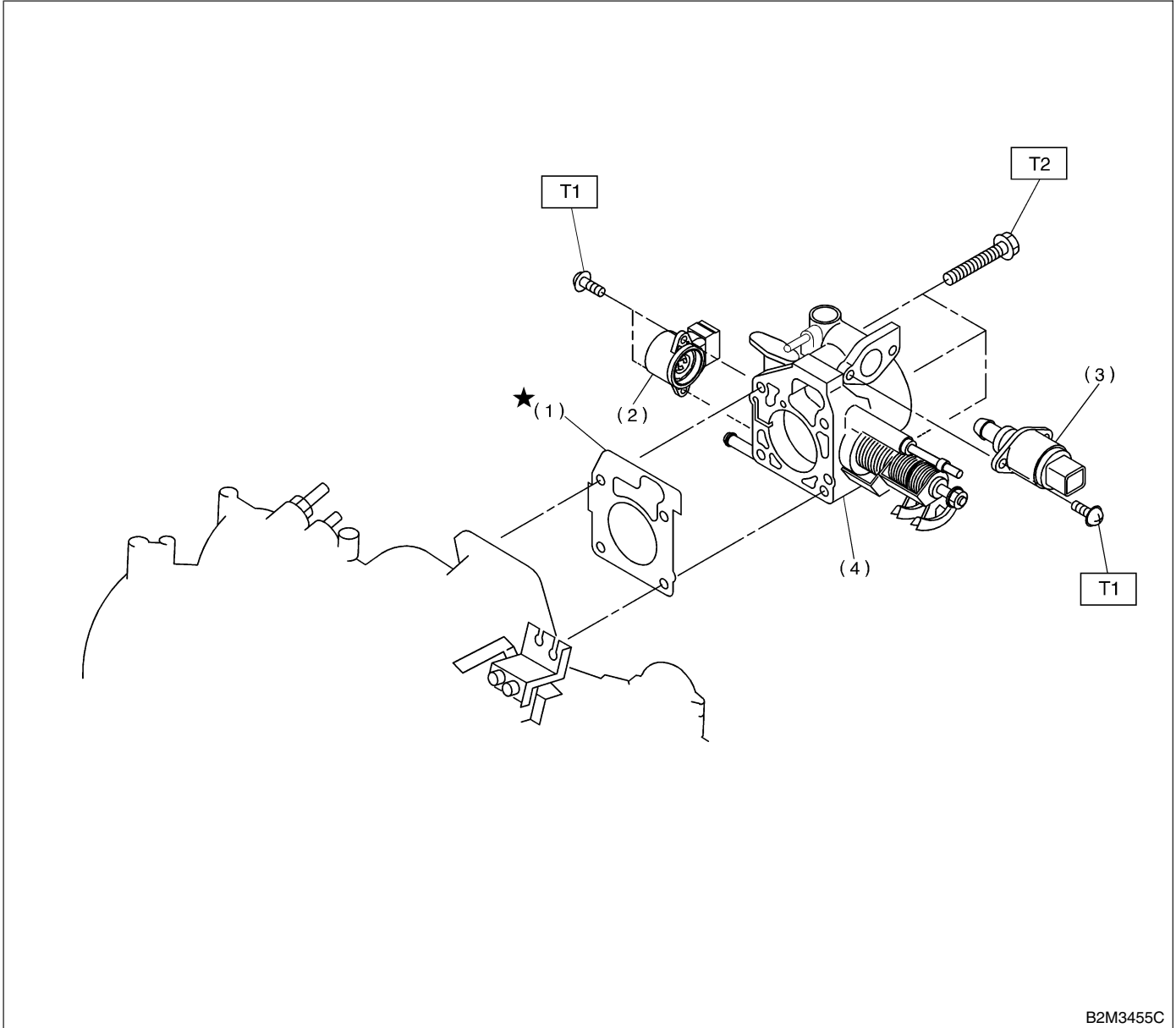
**T8: 25 (2.6, 18.8)**

---

# GENERAL DESCRIPTION

Fuel Injection (Fuel Systems)

## 2. AIR INTAKE SYSTEM S175001A0502



B2M3455C

- (1) Gasket
- (2) Throttle position sensor
- (3) Idle air control solenoid valve

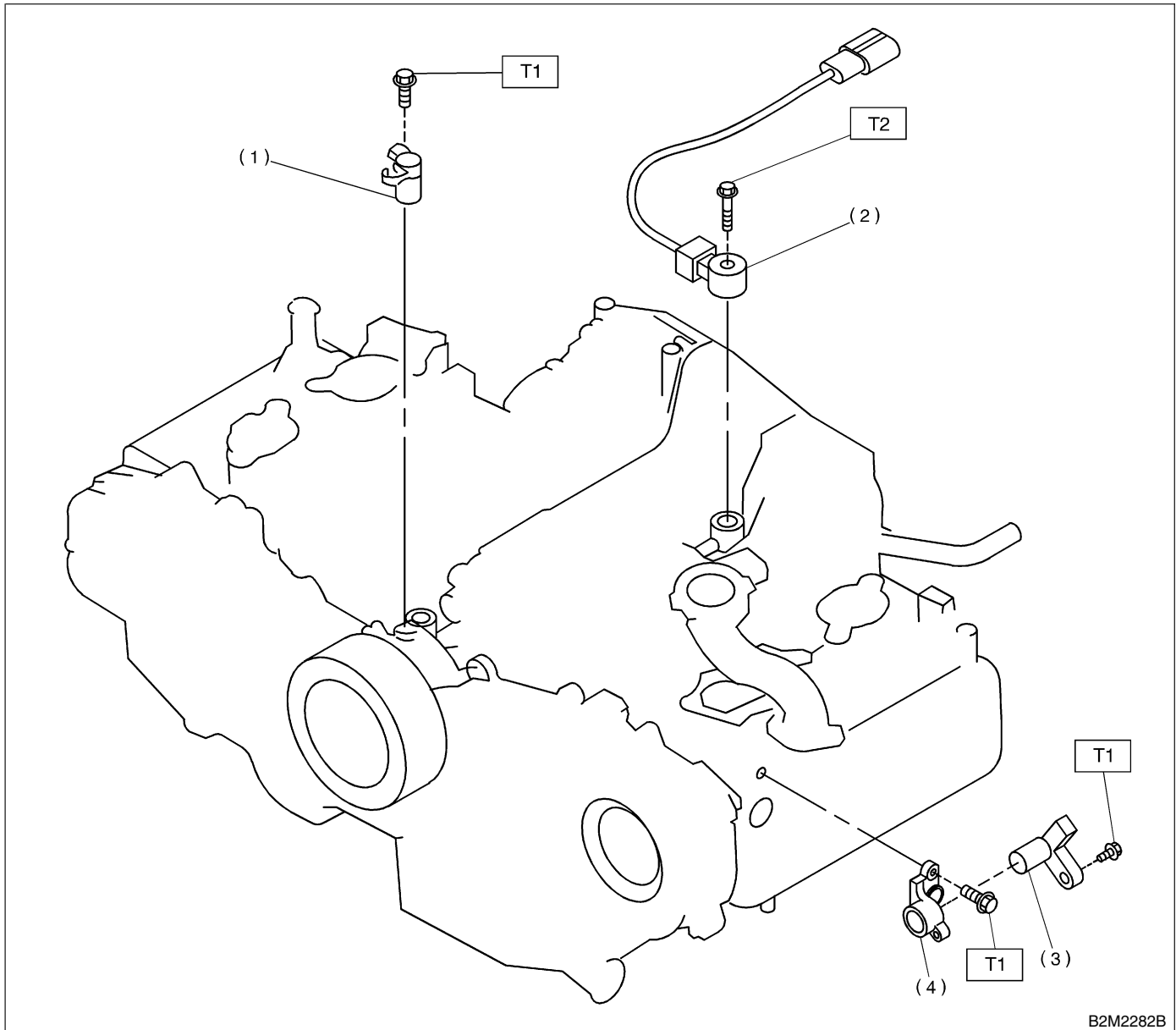
- (4) Throttle body

**Tightening torque: N·m (kgf·m, ft·lb)**

**T1: 2.4 (0.24, 1.7)**

**T2: 22 (2.2, 16)**

## 3. CRANKSHAFT POSITION, CAMSHAFT POSITION AND KNOCK SENSORS S175001A0503



B2M2282B

- (1) Crankshaft position sensor
- (2) Knock sensor

- (3) Camshaft position sensor
- (4) Camshaft position sensor support

**Tightening torque: N·m (kgf·m, ft·lb)**

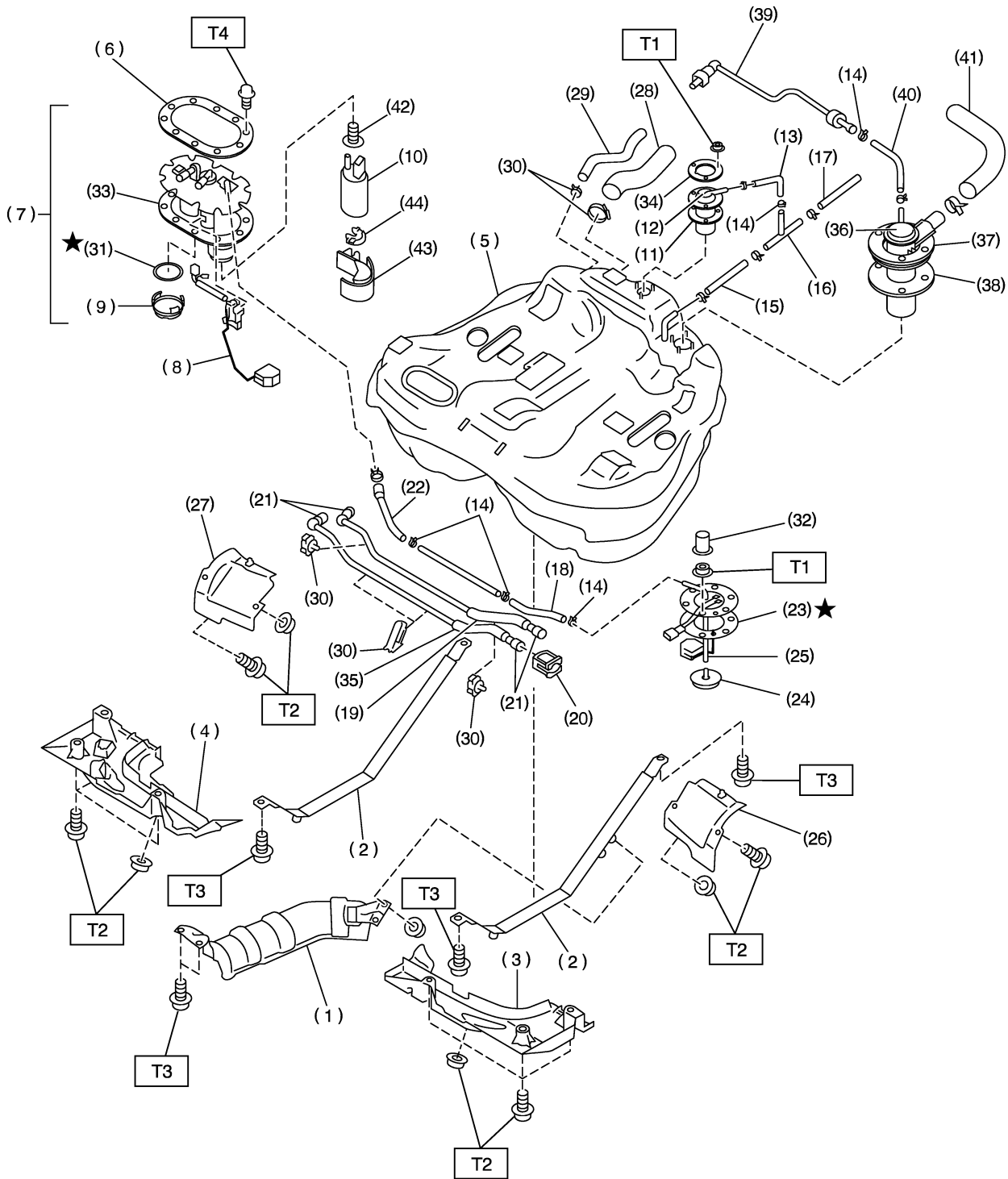
**T1: 6.4 (0.65, 4.7)**

**T2: 24 (2.4, 17.4)**

# GENERAL DESCRIPTION

Fuel Injection (Fuel Systems)

## 4. FUEL TANK S175001A0504



B2M3662A

# GENERAL DESCRIPTION

Fuel Injection (Fuel Systems)

---

(1) Heat sealed cover	(18) Jet pump hose A	(35) Fuel delivery tube
(2) Fuel tank band	(19) Fuel return tube	(36) Vent valve
(3) Protector LH (Front)	(20) Retainer	(37) Vent valve plate
(4) Protector RH (Front)	(21) Quick connector	(38) Vent valve gasket
(5) Fuel tank	(22) Jet pump hose B	(39) Evaporation tube
(6) Fuel pump plate	(23) Fuel sub level sensor gasket	(40) Evaporation hose D
(7) Fuel pump ASSY	(24) Jet pump filter	(41) Air vent hose
(8) Fuel level sensor	(25) Fuel sub level sensor	(42) Seal
(9) Cap	(26) Protector LH (Rear)	(43) Fuel pump holder
(10) Fuel pump	(27) Protector RH (Rear)	(44) Grommet
(11) Fuel cut valve gasket	(28) Fuel filler hose	
(12) Fuel cut valve	(29) Fuel tank pressure sensor hose	
(13) Evaporation hose A	(30) Clamp	
(14) Clip	(31) Gasket	
(15) Evaporation hose C	(32) Cap	
(16) Joint pipe	(33) Gasket	
(17) Evaporation hose B	(34) Fuel cut valve plate	

---

**Tightening torque: N·m (kgf-m, ft-lb)**

**T1: 4.4 (0.45, 3.3)**

**T2: 18 (1.8, 13.0)**

**T3: 33 (3.4, 25)**

**T4: 5.9 (0.6, 4.3)**

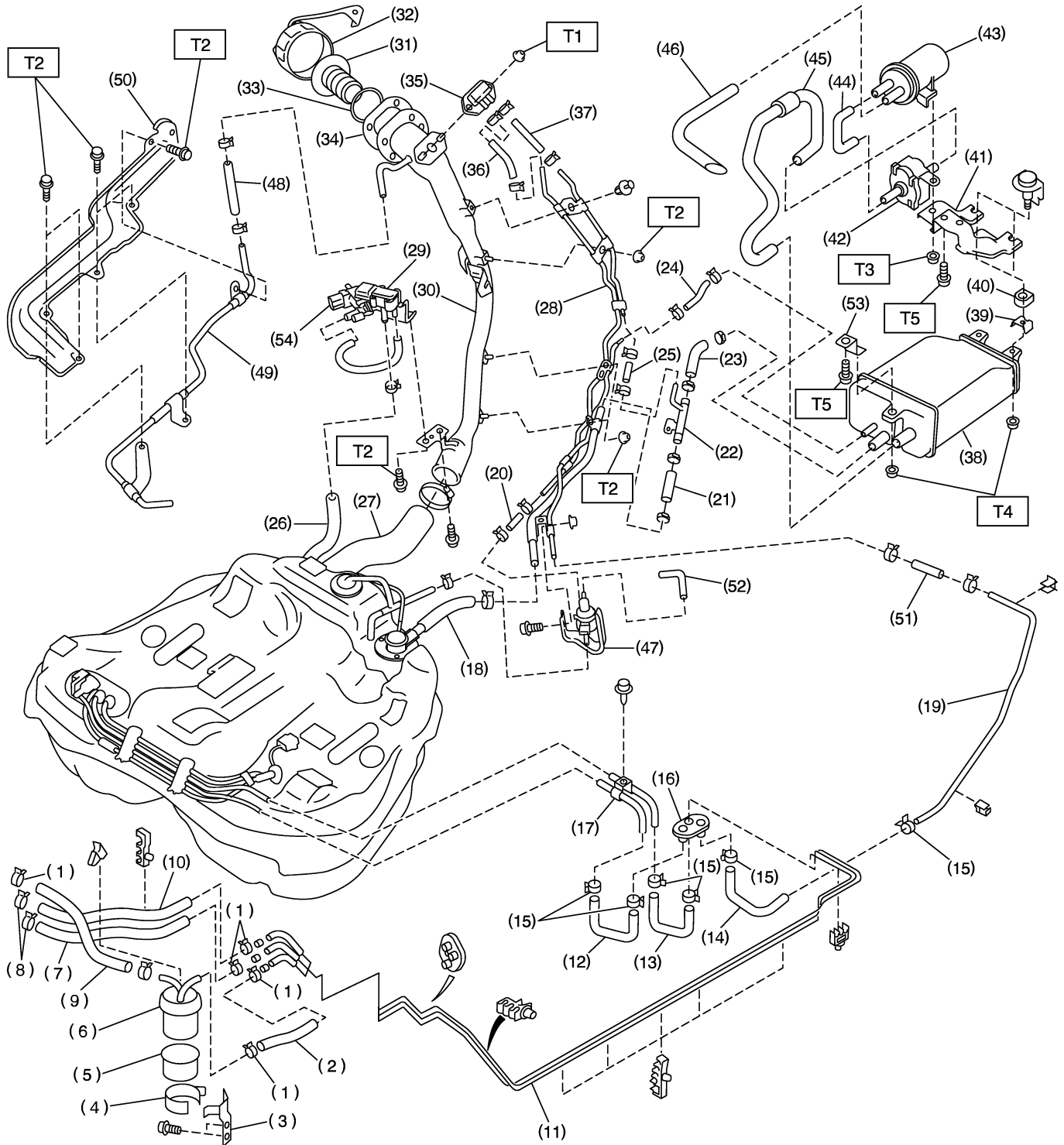
---



# GENERAL DESCRIPTION

Fuel Injection (Fuel Systems)

## 5. FUEL LINE S175001A0505



B2M4691A

# GENERAL DESCRIPTION

## Fuel Injection (Fuel Systems)

---

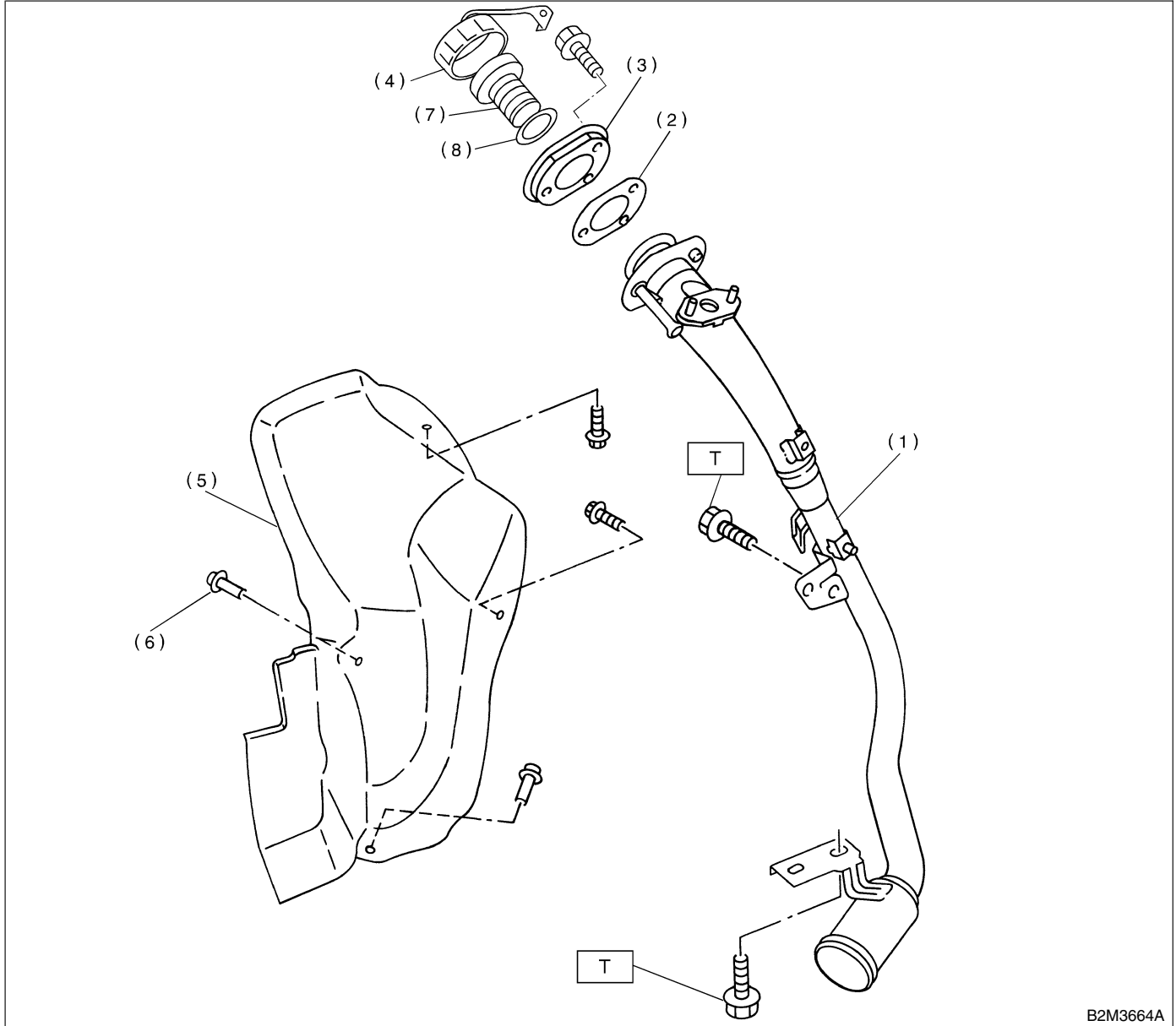
(1) Clamp	(23) Evaporation hose J	(45) Drain valve hose
(2) Fuel delivery hose A	(24) Evaporation hose K	(46) Drain filter hose B
(3) Fuel filter bracket	(25) Evaporation hose L	(47) Pressure control solenoid valve
(4) Fuel filter holder	(26) Fuel tank pressure sensor hose	(48) Evaporation hose O
(5) Fuel filter cup	(27) Fuel filler hose	(49) Evaporation pipe C
(6) Fuel filter	(28) Evaporation pipe B	(50) Pipe protector
(7) Evaporation hose F	(29) Fuel tank pressure sensor	(51) Evaporation hose P
(8) Clip	(30) Fuel filler pipe	(52) Pressure control solenoid valve hose
(9) Fuel delivery hose B	(31) Ring A	(53) Canister front bracket
(10) Fuel return hose	(32) Fuel filler cap	(54) Atmospheric pressure solenoid valve
(11) Fuel pipe ASSY	(33) Ring B	
(12) Fuel delivery hose C	(34) Packing	
(13) Fuel return hose C	(35) Shut valve	
(14) Evaporation hose G	(36) Evaporation hose M	<b>Tightening torque: N·m (kgf-m, ft-lb)</b>
(15) Clamp	(37) Evaporation hose N	<b>T1: 4.5 (0.46, 3.3)</b>
(16) Grommet	(38) Canister	<b>T2: 7.5 (0.76, 5.5)</b>
(17) Fuel pipe ASSY	(39) Canister lower bracket	<b>T3: 18 (1.8, 13.0)</b>
(18) Air vent hose A	(40) Cushion rubber	<b>T4: 23 (2.3, 16.6)</b>
(19) Evaporation hose H	(41) Canister upper bracket	<b>T5: 33 (3.4, 25)</b>
(20) Evaporation hose I	(42) Drain valve	
(21) Air vent hose B	(43) Drain filter	
(22) Air vent pipe	(44) Drain filter hose A	

---

# GENERAL DESCRIPTION

Fuel Injection (Fuel Systems)

## 6. FUEL FILLER PIPE S175001A0506



- (1) Fuel filler pipe ASSY
- (2) Filler pipe packing
- (3) Filler ring
- (4) Filler cap
- (5) Filler pipe protector
- (6) Clip
- (7) Ring A
- (8) Ring B

**Tightening torque: N·m (kgf·m, ft·lb)**

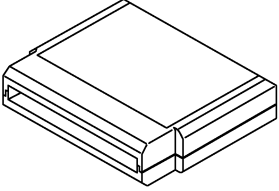

**T: 7.5 (0.75, 5.4)**

## C: CAUTION S175001A03

- Wear working clothing, including a cap, protective goggles, and protective shoes during operation.
- Remove contamination including dirt and corrosion before removal, installation or disassembly.
- Keep the disassembled parts in order and protect them from dust or dirt.
- Before removal, installation or disassembly, be sure to clarify the failure. Avoid unnecessary removal, installation, disassembly, and replacement.

- Be careful not to burn your hands, because each part on the vehicle is hot after running.
- Be sure to tighten fasteners including bolts and nuts to the specified torque.
- Place shop jacks or safety stands at the specified points.
- Before disconnecting electrical connectors of sensors or units, be sure to disconnect ground cable from battery.
- Place "NO FIRE" signs near the working area.
- Be careful not to spill fuel on the floor.

## D: PREPARATION TOOL S175001A17

ILLUSTRATION	TOOL NUMBER	DESCRIPTION	REMARKS
  B2M3876	24082AA190 (Newly adopted tool)	CARTRIDGE	
  B2M3877	22771AA030	SELECT MONITOR KIT	Troubleshooting for electrical systems. <ul style="list-style-type: none"> <li>● English: 22771AA030 (Without printer)</li> <li>● German: 22771AA070 (Without printer)</li> <li>● French: 22771AA080 (Without printer)</li> <li>● Spanish: 22771AA090 (Without printer)</li> </ul>