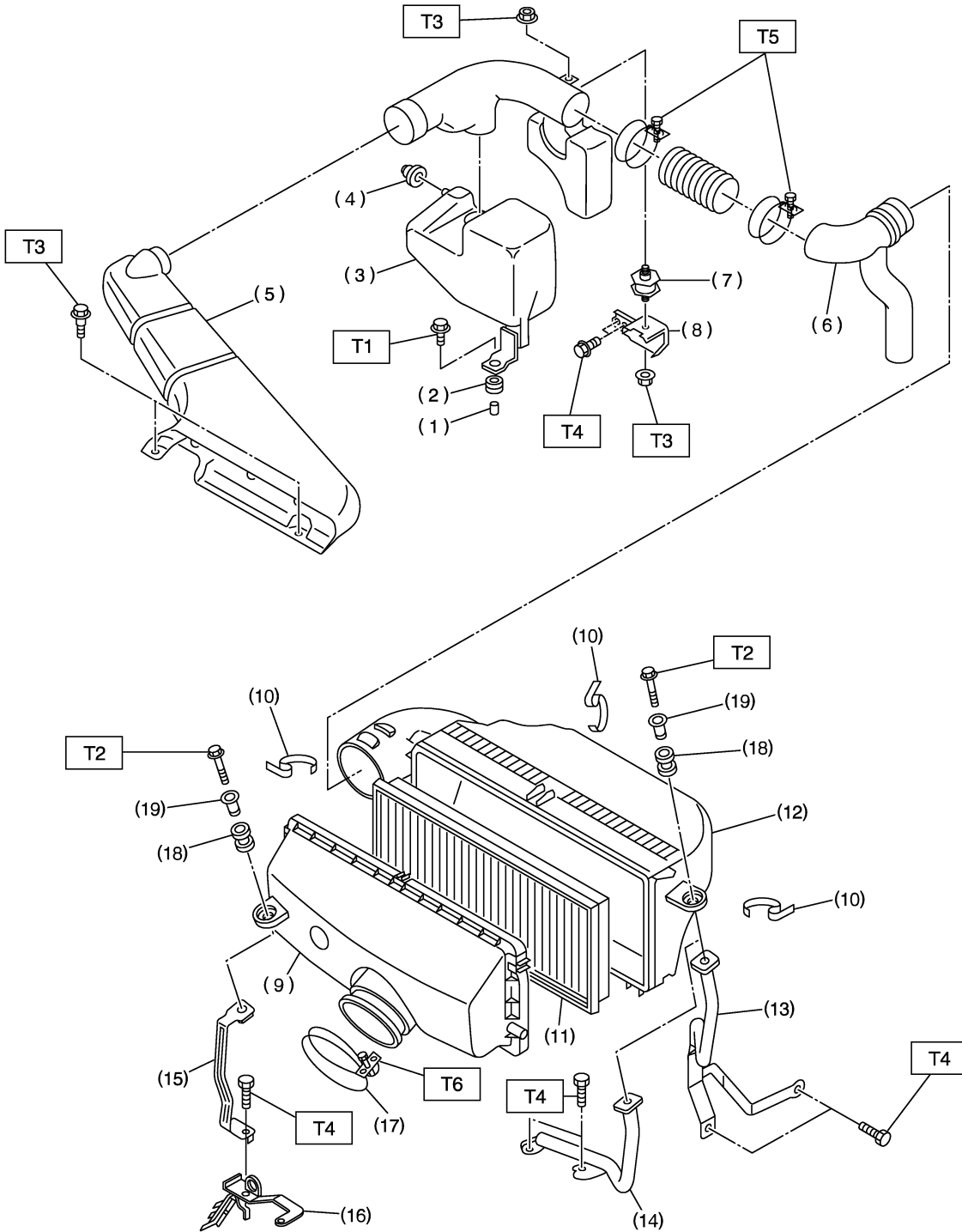


GENERAL DESCRIPTION

Intake (Induction)

1. General Description S174001

A: COMPONENT S174001A05



B2M4592A

GENERAL DESCRIPTION

Intake (Induction)

- (1) Spacer
- (2) Bushing
- (3) Resonator chamber
- (4) Cushion rubber
- (5) Air intake duct A
- (6) Air intake duct B
- (7) Cushion
- (8) Bracket
- (9) Air cleaner case A
- (10) Clip

- (11) Air cleaner element
- (12) Air cleaner case B
- (13) Air cleaner case stay LH (MT vehicles)
- (14) Air cleaner case stay LH (AT vehicles)
- (15) Air cleaner case stay RH
- (16) Engine harness bracket
- (17) Clamp
- (18) Bushing

- (19) Spacer

Tightening torque: N·m (kgf-m, ft-lb)

T1: 33 (3.4, 24.6)

T2: 6.5 (0.66, 4.8)

T3: 7.5 (0.76, 5.5)

T4: 16 (1.6, 11.6)

T5: 2.5 (0.25, 1.8)

T6: 2.9 (0.3, 2.2)

B: CAUTION S174001A03

- Wear working clothing, including a cap, protective goggles, and protective shoes during operation.
- Remove contamination including dirt and corrosion before removal, installation or disassembly.
- Keep the disassembled parts in order and protect them from dust or dirt.
- Before removal, installation or disassembly, be sure to clarify the failure. Avoid unnecessary removal, installation, disassembly, and replacement.
- Be careful not to burn your hands, because each part on the vehicle is hot after running.
- Be sure to tighten fasteners including bolts and nuts to the specified torque.
- Place shop jacks or safety stands at the specified points.
- Before disconnecting electrical connectors of sensor or units, be sure to disconnect ground cable from battery.