

# GENERAL DESCRIPTION

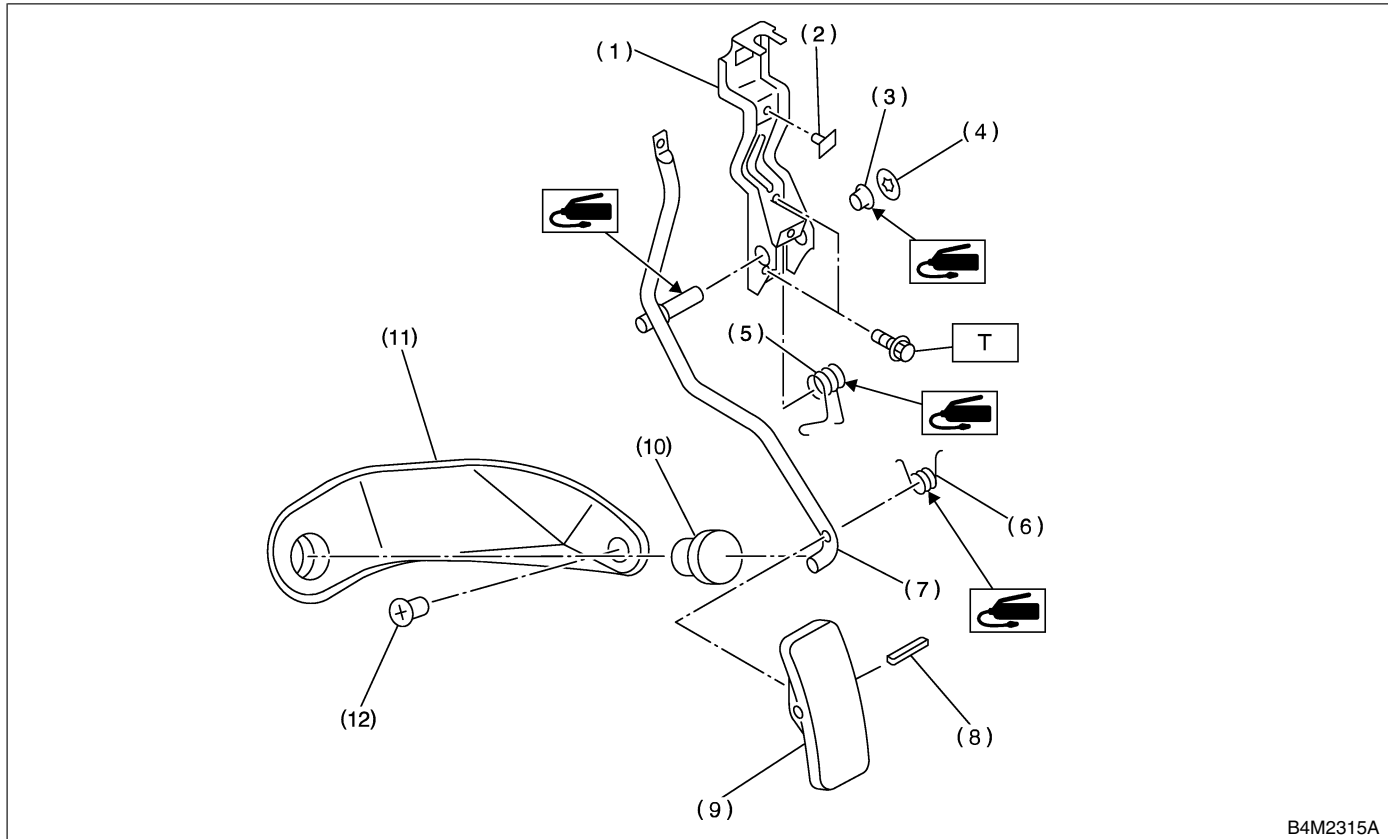
Speed Control Systems

## 1. General Description S177001

### A: SPECIFICATION S177001E49

Accelerator pedal	Free play	At pedal pad	1 — 4 mm (0.04 — 0.16 in)
	Stroke	At pedal pad	50 — 55 mm (1.97 — 2.17 in)

### B: COMPONENT S177001A05



- (1) Accelerator bracket
- (2) Stopper
- (3) Bushing
- (4) Clip
- (5) Accelerator spring

- (6) Accelerator pedal spring
- (7) Accelerator pedal lever
- (8) Spring pin
- (9) Accelerator pedal
- (10) Accelerator stopper

- (11) Accelerator plate
- (12) Clip

**Tightening torque: N·m (kgf·m, ft·lb)**  
**T: 18 (1.8, 13.0)**

### C: CAUTION S177001A03

- Wear work clothing, including a cap, protective goggles, and protective shoes during operation.
- Remove contamination, including dirt and corrosion, before removal, installation or disassembly.
- Keep the disassembled parts in order and protect them from dust and dirt.
- Before removal, installation or disassembly, be sure to clarify the failure. Avoid unnecessary removal, installation, disassembly, and replacement.
- Be careful not to burn your hands, because each part in the vehicle is hot after running.

- Be sure to tighten fasteners including bolts and nuts to the specified torque.
- Place shop jacks or safety stands at the specified points.
- Before disconnecting electrical connectors of sensors or units, be sure to disconnect ground cable from battery.