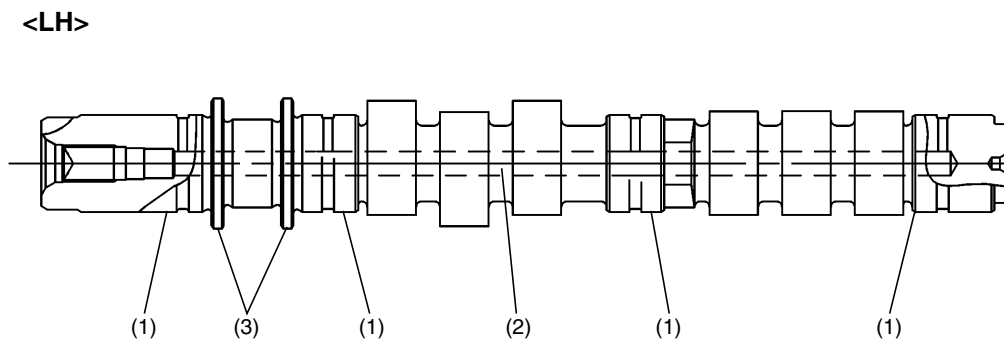
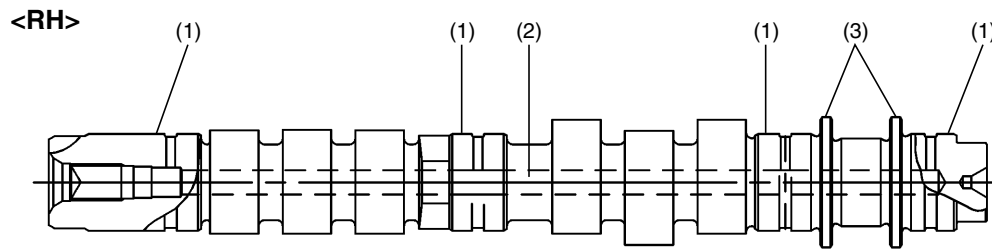


CAMSHAFT

Mechanical

6. Camshaft

- The camshaft is supported inside the cylinder head at four journals.
- The two flanges on each camshaft supports thrust forces to limit the end play of the camshaft within the tolerance.
- Each camshaft has an oil passage in it.



B2H1987B

- (1) Journal
- (2) Oil passage
- (3) Shaft flange

ME-8