

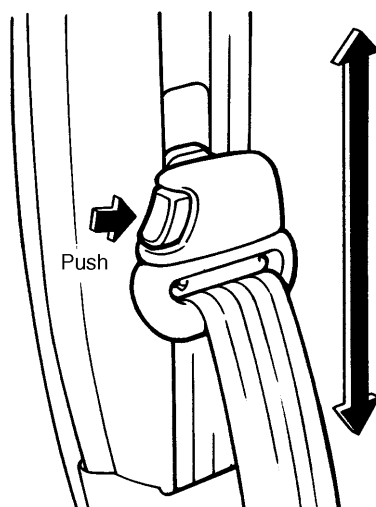
SEAT BELT

Seat Belt System

1. Seat Belt

A: ADJUSTABLE SHOULDER BELT ANCHOR

Each front seat belt system has an adjustable shoulder belt anchor which allows the occupant to select the most appropriate anchor height from among the five positions in a 129 mm (5.08 in) range.



B5H0605A

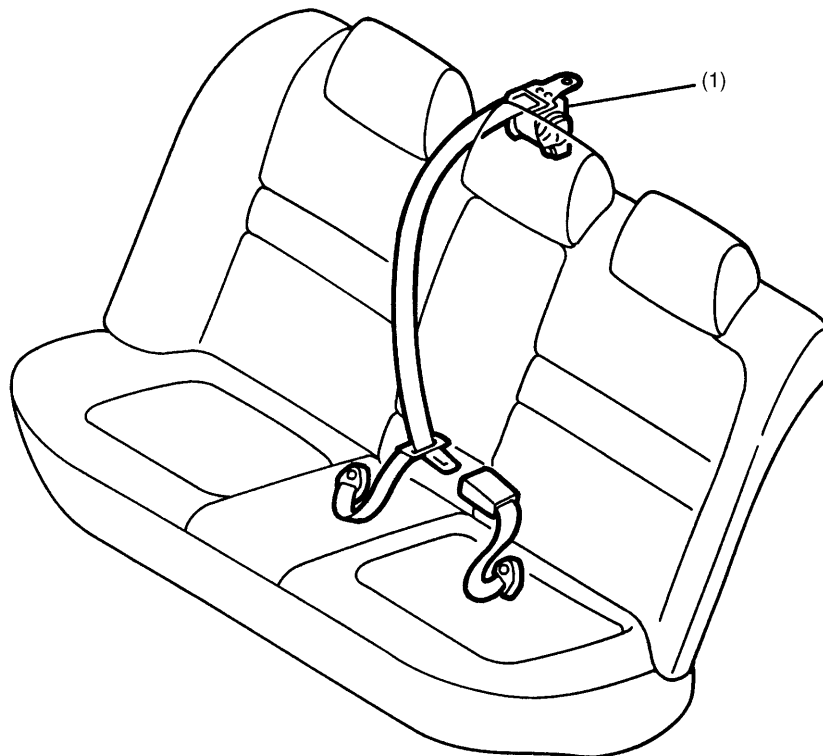
SB-2

SEAT BELT

Seat Belt System

B: REAR CENTER THREE-POINT TYPE SEAT BELT (SEDAN)

A three-point type seat belt is available for the center seating position of the rear seat. The retractor for the seat belt is installed on the luggage shelf behind the seating position.

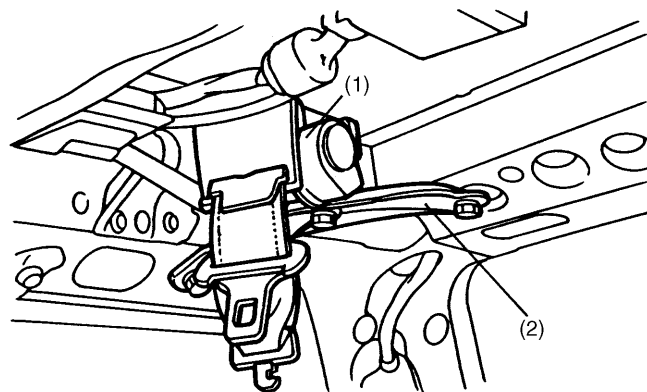


B5H0792A

(1) Retractor

C: REAR CENTER THREE-POINT TYPE SEAT BELT (WAGON)

A three-point type seat belt is available for the center seating position of the rear seat. The retractor for the seat belt is installed on the ceiling at the rear right of the cabin.



B5H0606A

(1) Retractor
(2) Bracket

SB-3

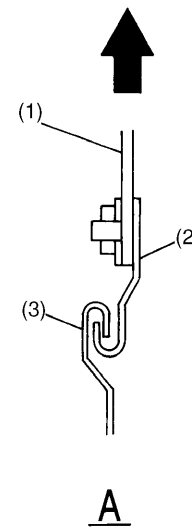
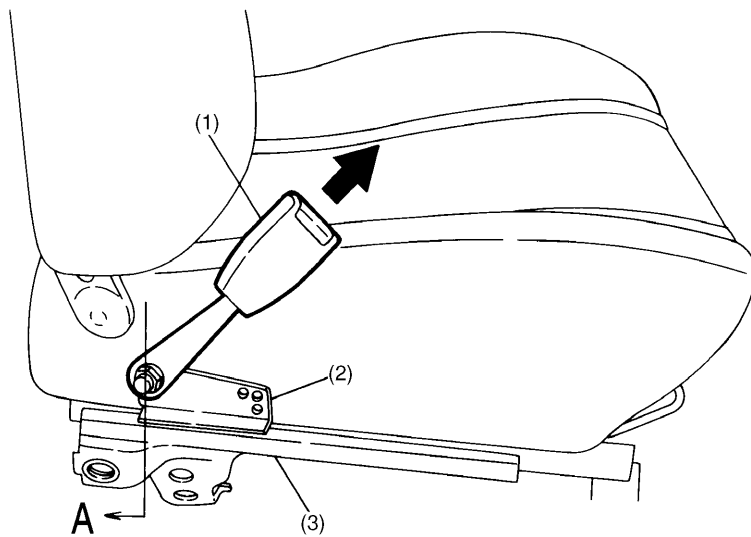
SEAT BELT

Seat Belt System

D: SEAT ANCHORED INNER BELT

The front inner belt (buckle stalk) is attached to the front seat rather than to the floor. This keeps the position of the occupant relative to the front inner belt always constant even when the front seat is moved for adjustment.

When an impact is applied to the occupant in a collision, the inner belt is pulled together with the upper hook in the direction of the arrow to engage the upper hook with the lower hook. As a result, the impact load is transmitted to the vehicle body and dispersed.

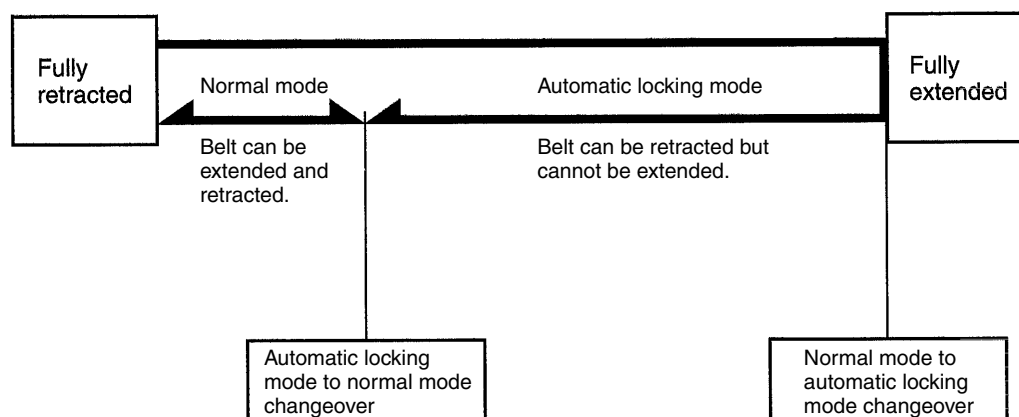


H5H0807

- (1) Inner belt
- (2) Upper hook
- (3) Lower hook

E: AUTOMATIC RETRACTOR

When the front passenger's seat belt and the rear seat belts for the right and left seating positions are drawn out completely, their retractors are placed in the automatic locking mode which is used when installing a child restraint system. In this mode, the belt can be retracted but cannot be extended. When the belt is retracted to a certain length, this mode is cancelled and normal operation is restored.



B5H0328A

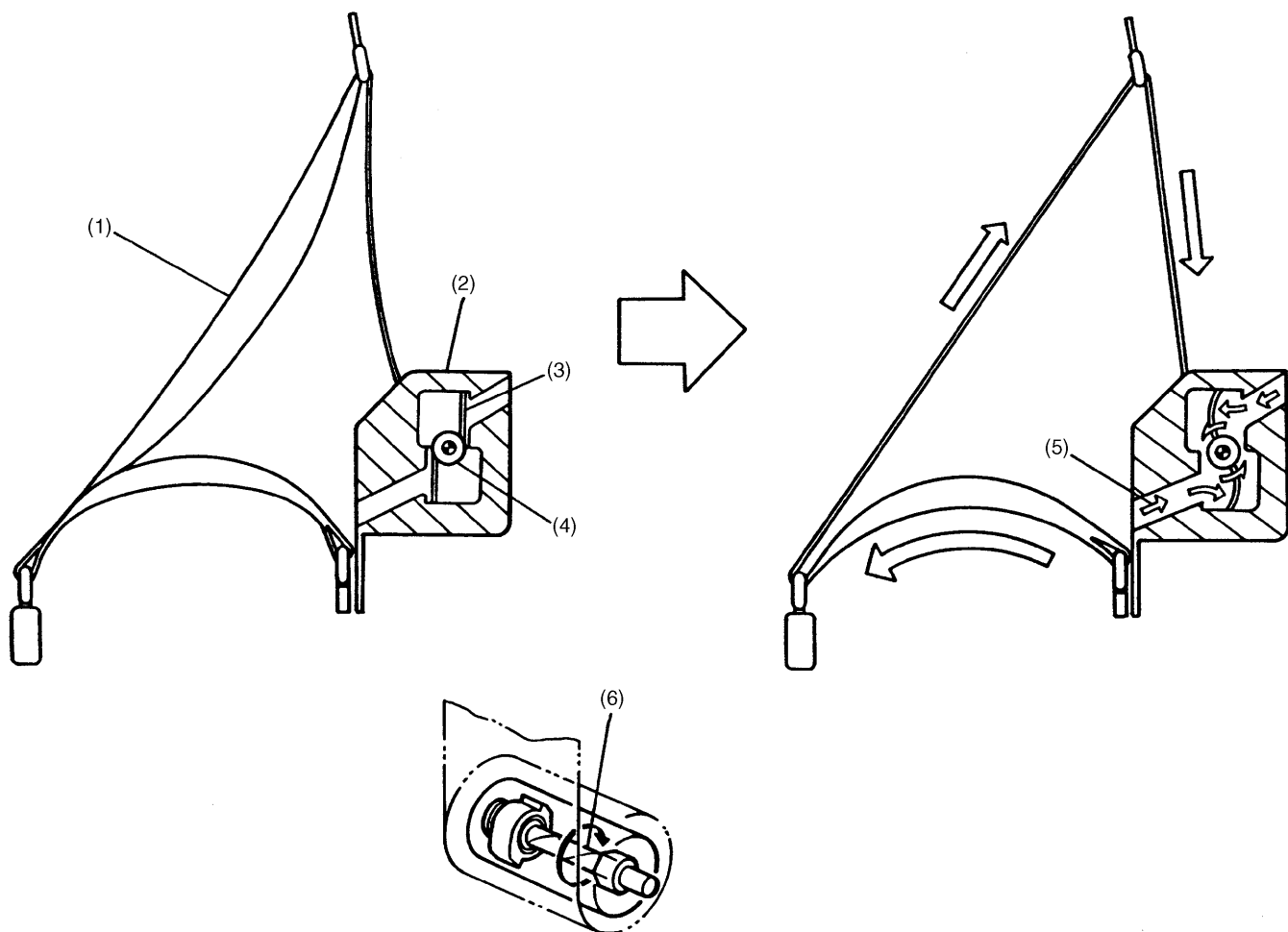
SEAT BELT

Seat Belt System

F: PRETENSIONER

1. CONSTRUCTION

The driver's and front passenger's seat belts are equipped with seat belt pretensioners. The pretensioners use the front sub sensors and the airbag control module inside sensors to control their operation. If the sensors detect an impact exceeding the predetermined level during a frontal or front-angled collision, the front seat belts are quickly rewound by the retractors to take up slacks for maximum restraining of the seat occupants. If the load placed on a seat belt exceeds the predetermined level, the torsion bar twists to allow the belt to be payed out, thus lessening the load imposed on the belt wearer's chest. Once the seat belt pretensioner has been activated, the seat belt retractor remains locked.



B5H0608A

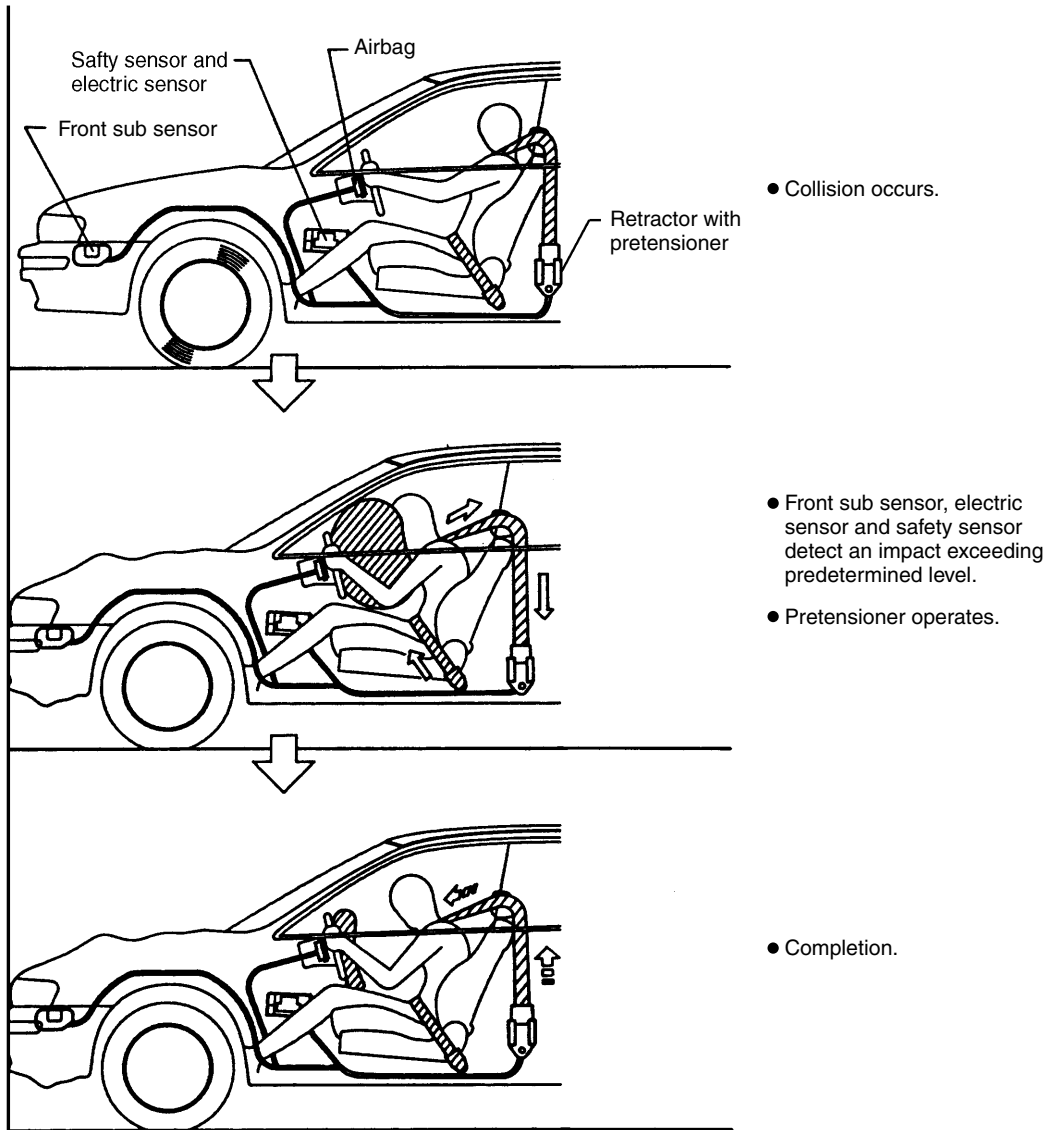
- (1) Webbing
- (2) Retractor
- (3) Strip
- (4) Shaft
- (5) Gas
- (6) Torsion bar

SB-5

SEAT BELT

Seat Belt System

2. FUNCTION



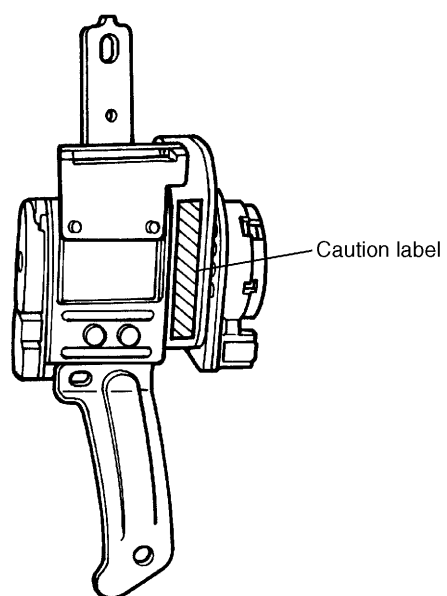
B5H0630B

SB-6

SEAT BELT

Seat Belt System

3. CAUTION LABEL



B5H0937A

SB-7

SEAT BELT

Seat Belt System

MEMO

SB-8