

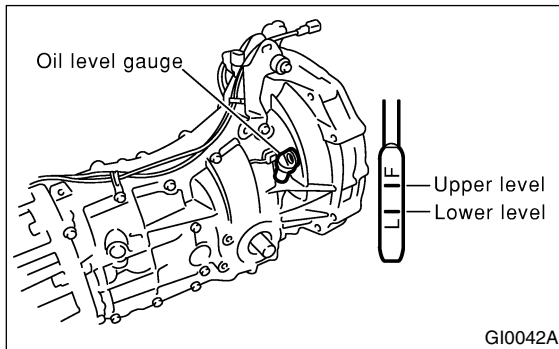
TRANSMISSION GEAR OIL

Manual Transmission and Differential

2. Transmission Gear Oil S503219

A: INSPECTION S503219A10

- 1) Park vehicle on a level surface.
- 2) Turn ignition switch to OFF, and wait until the engine cools.
- 3) Remove oil level gauge and wipe it clean.
- 4) Reinsert the level gauge all the way. Be sure that the level gauge is correctly inserted and in the proper direction.
- 5) Pull out the oil level gauge again and check the oil level on it. If it is below the lower level, add oil through the oil level gauge hole to bring the level up to the upper level.



B: REPLACEMENT S503219A20

- 1) Pull out oil level gauge.
- 2) Lift-up the vehicle.
- 3) Drain transmission gear oil completely.

CAUTION:

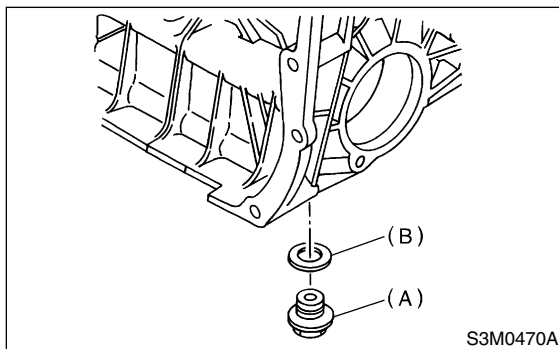
Directly after the engine has been running, the transmission gear oil is hot. Be careful not to burn yourself.

NOTE:

Tighten transmission gear oil drain plug after draining transmission gear oil.

Tightening torque:

44 N·m (4.5 kgf·m, 32.5 ft·lb)



- (A) Drain plug
(B) Gasket

- 4) Lower the vehicle.

- 5) Pour gear oil into the gauge hole.

Recommended gear oil:

Use GL-5 or equivalent.

Gear oil capacity:

3.5 ℓ (3.7 US qt, 3.1 Imp qt)

- 6) Check the level of the transmission gear oil.

CAUTION:

When inserting the level gauge into transmission gear, align the protrusion on the side of the top part of the level gauge with the notch in the gauge hole.

NOTE:

The level should be within the specified range marked on the gauge.