

GENERAL DESCRIPTION

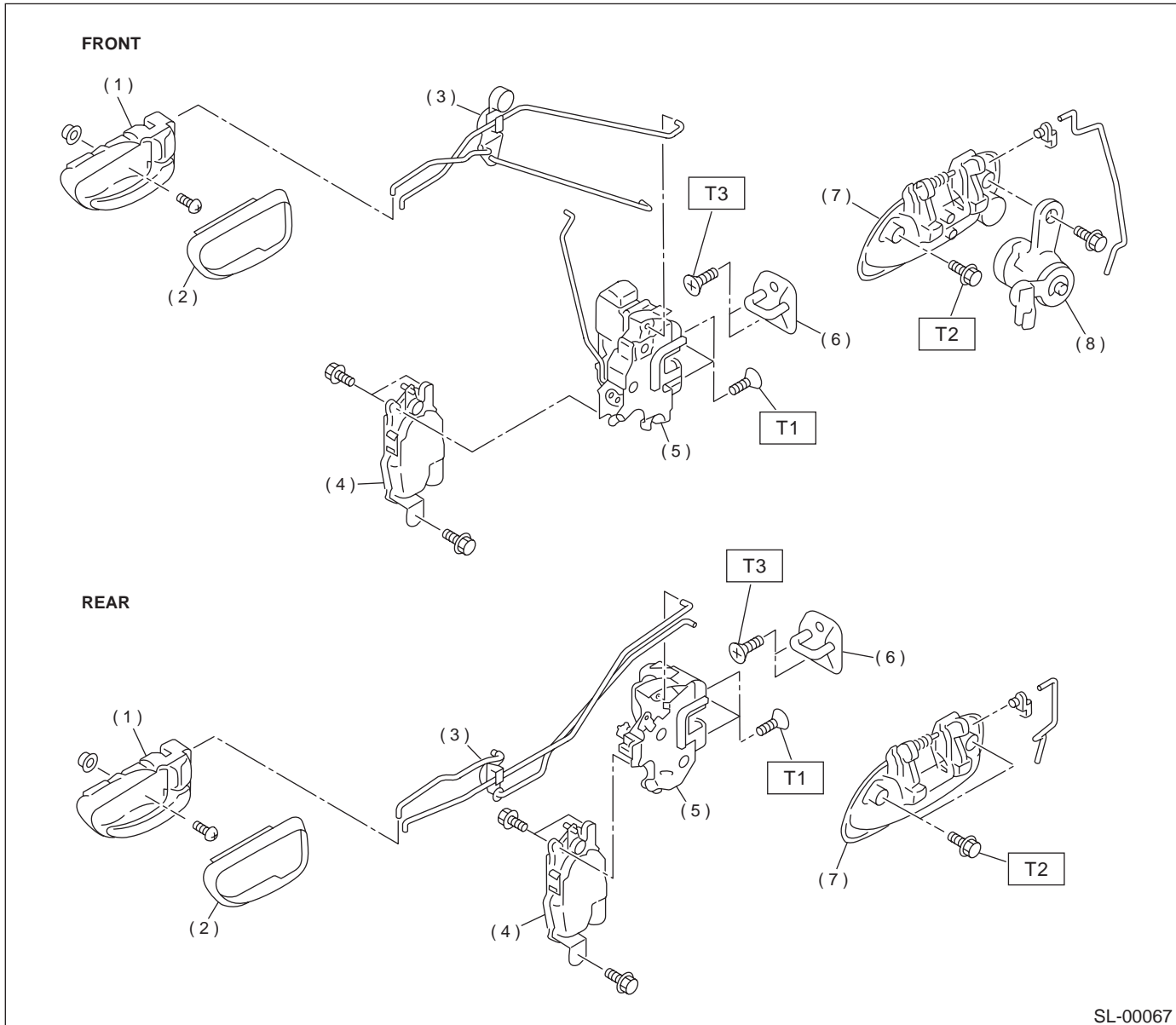
SECURITY AND LOCKS

1. General Description

A: SPECIFICATIONS

B: COMPONENT

1. DOOR LOCK ASSEMBLY



- (1) Inner remote ASSY
- (2) Inner remote cover
- (3) Bell crank
- (4) Auto-door lock actuator
- (5) Door latch

- (6) Striker
- (7) Door outer handle
- (8) Key cylinder

Tightening torque: N·m (kgf·m, ft·lb)

T1: 6.4 (0.65, 4.7)

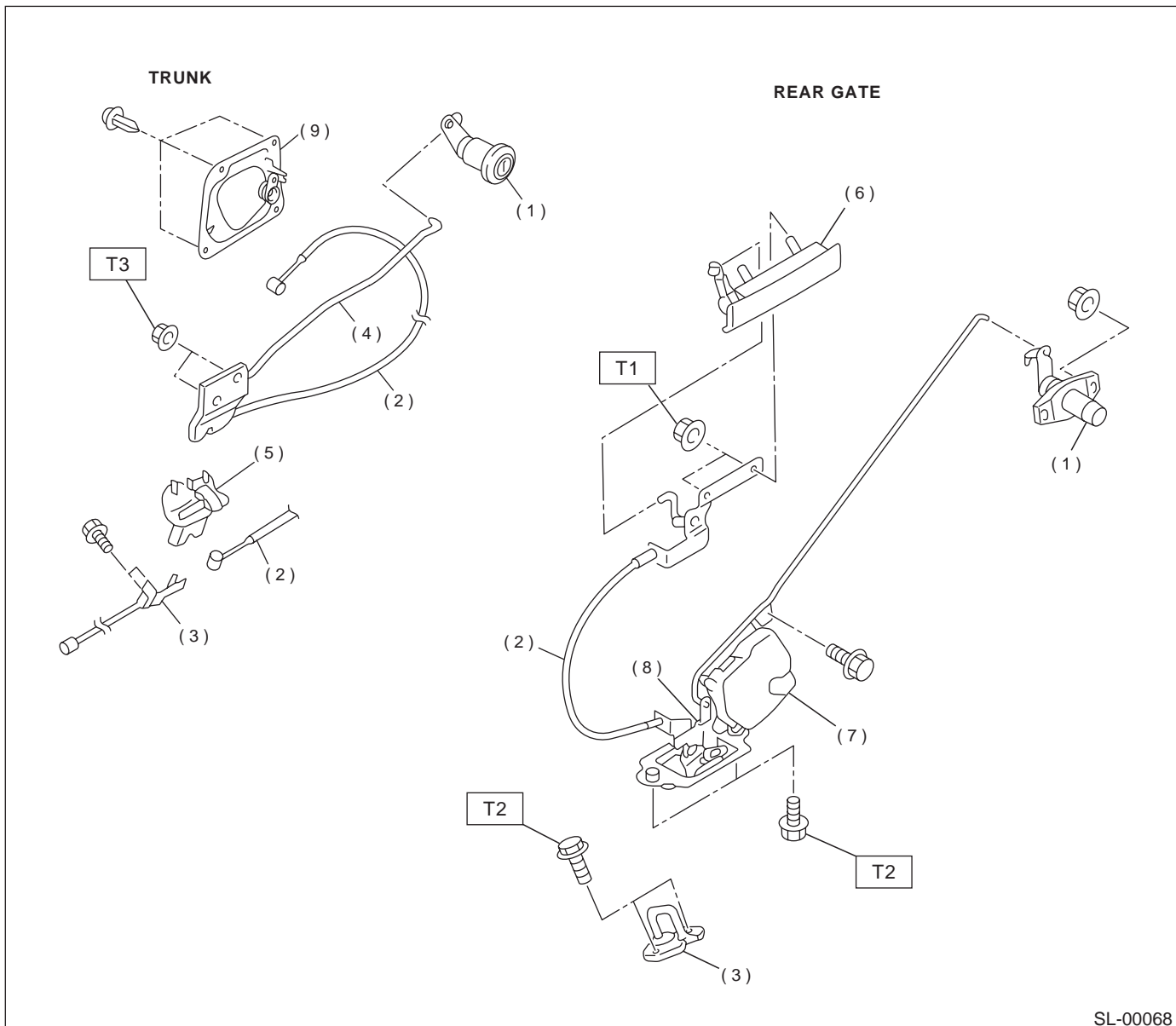
T2: 7.35 (0.75, 5.4)

T3: 18.0 (1.8, 13.0)

GENERAL DESCRIPTION

SECURITY AND LOCKS

2. TRUNK LID AND REAR GATE LOCK



- | | |
|--------------------------|------------------------------|
| (1) Key cylinder | (6) Rear gate outer handle |
| (2) Cable | (7) Rear gate actuator |
| (3) Striker | (8) Rear gate latch |
| (4) Trunk lid lock ASSY | (9) Trunk lid release handle |
| (5) Trunk lid lock cover | |

Tightening torque: N·m (kgf-m, ft-lb)

T1: 7.5 (0.76, 5.5)

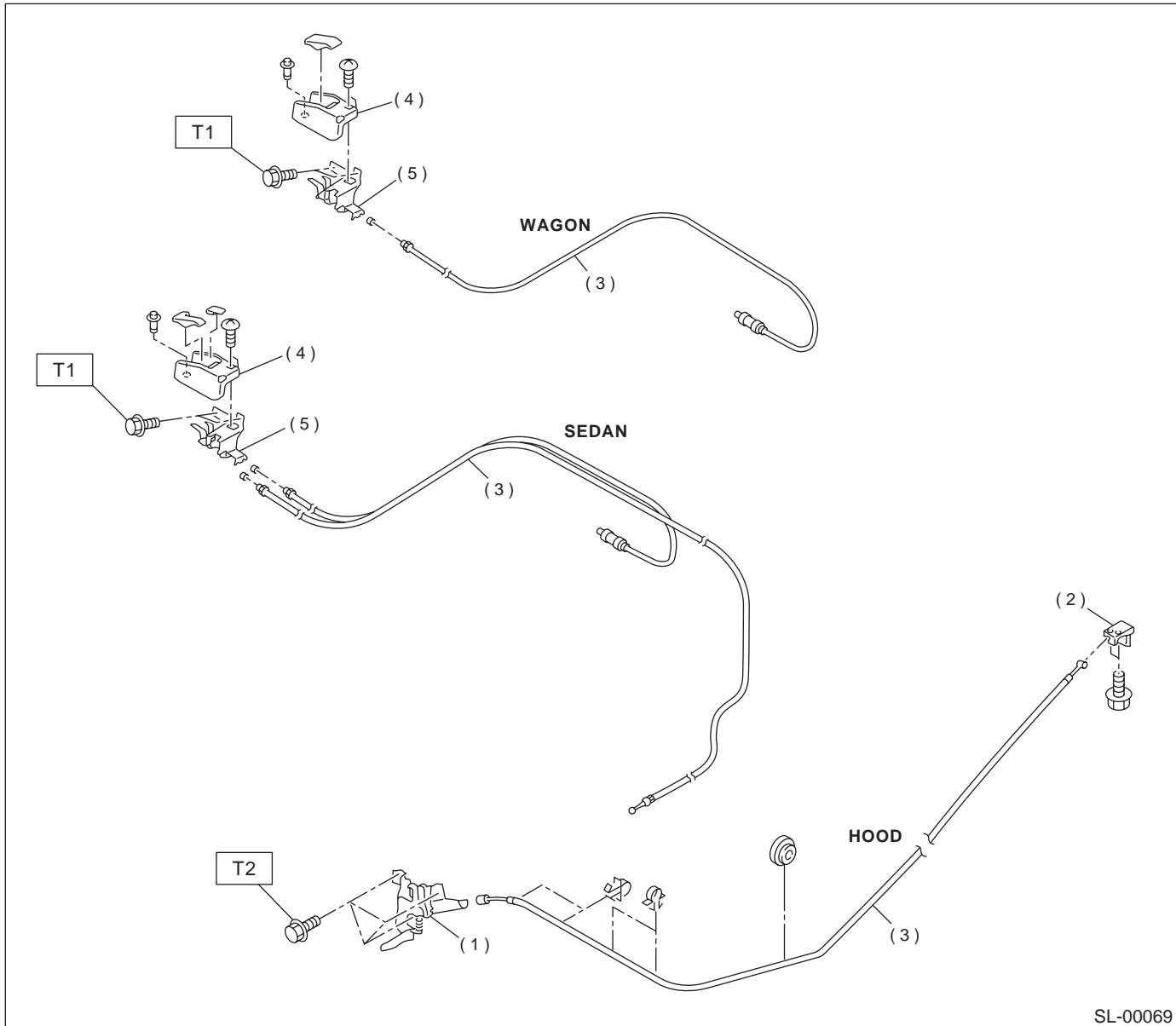
T2: 25 (2.5, 18.1)

T3: 18 (1.8, 13.0)

GENERAL DESCRIPTION

SECURITY AND LOCKS

3. HOOD LOCK AND REMOTE OPENERS



- (1) Hood lock ASSY
- (2) Lever ASSY
- (3) Cable

- (4) Cover
- (5) Pull handle ASSY

Tightening torque: N·m (kgf-m, ft-lb)

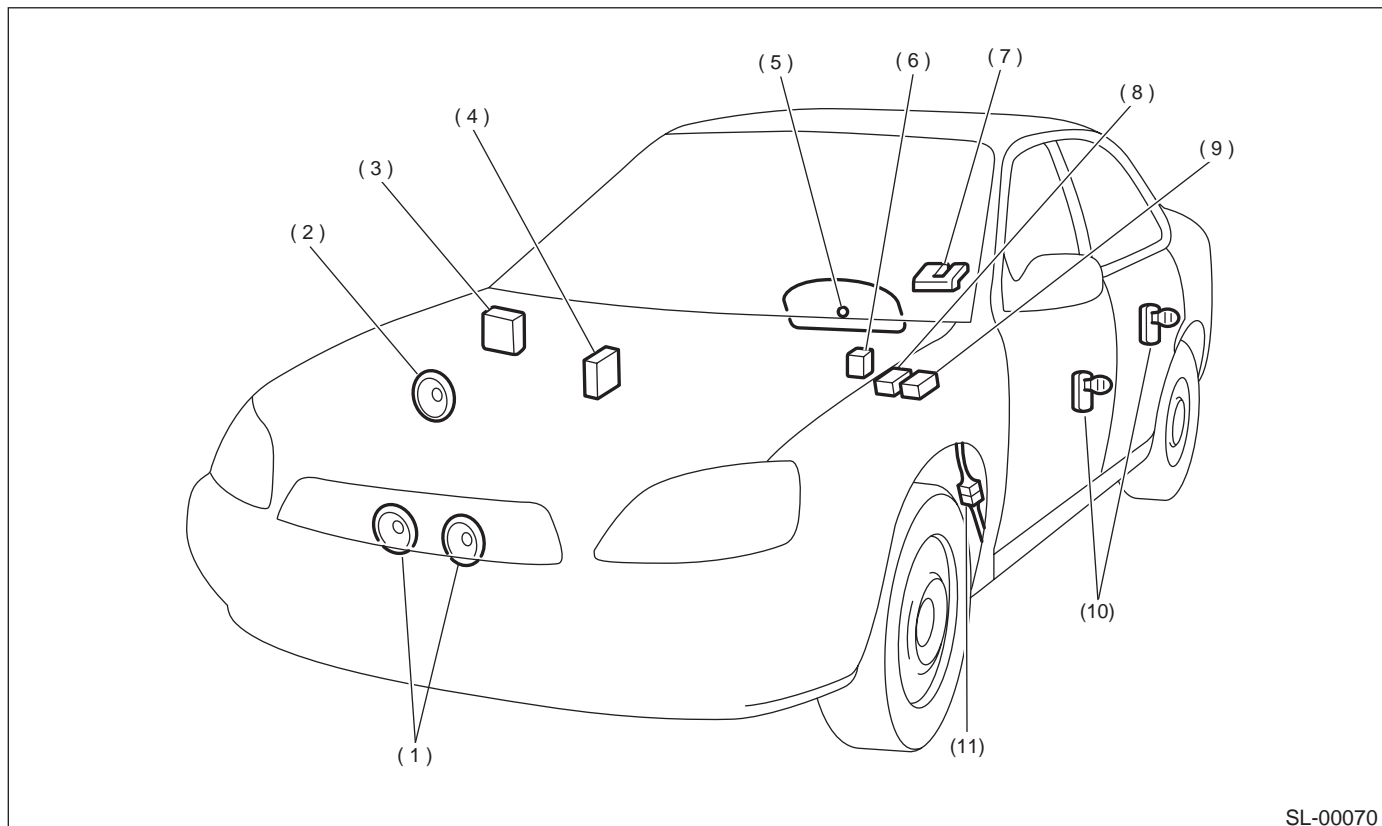
T1: 6.4 (0.65, 4.7)

T2: 32 (3.3, 23.9)

GENERAL DESCRIPTION

SECURITY AND LOCKS

4. SECURITY SYSTEM



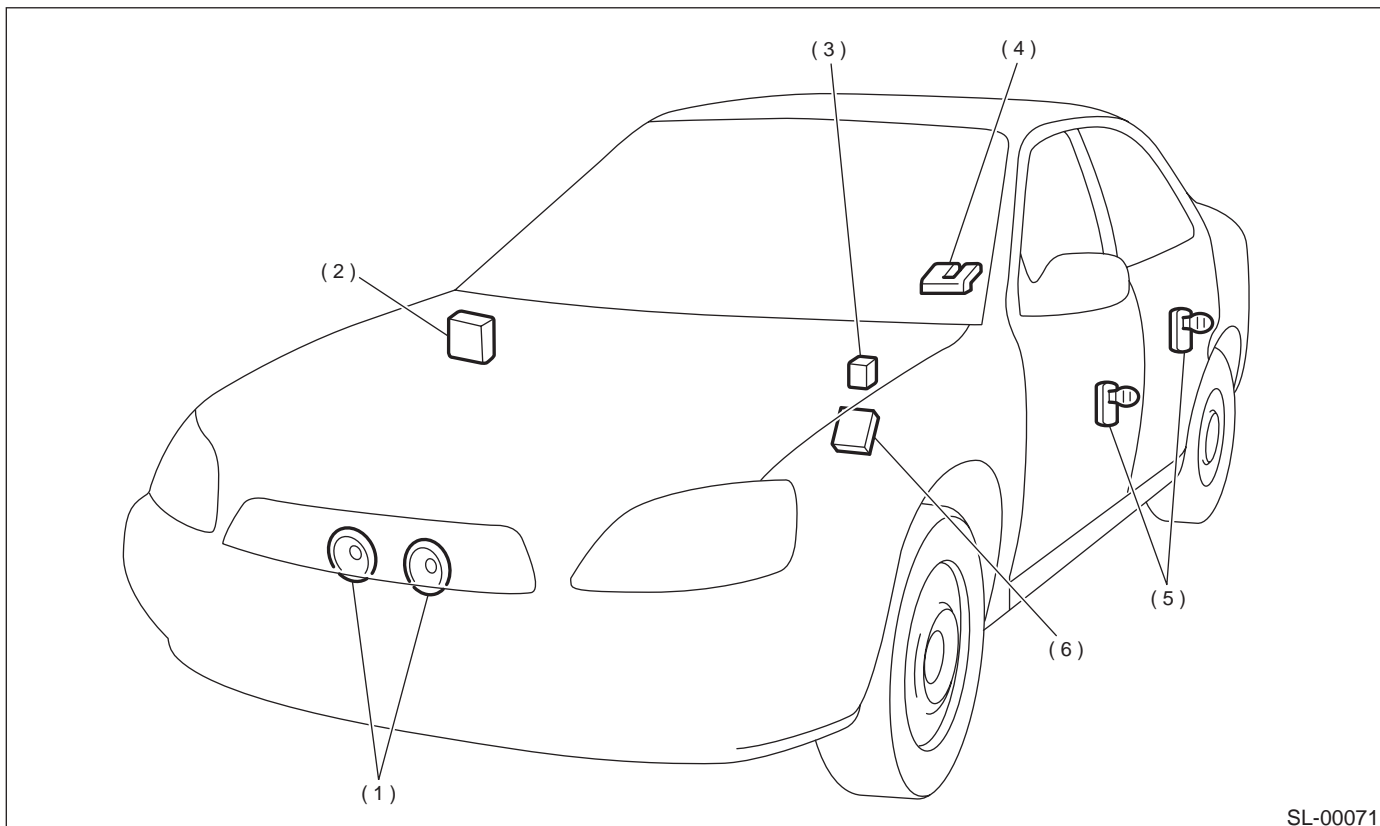
SL-00070

- | | | |
|---|--|----------------------------|
| (1) Horn | (6) Horn relay (in main fuse box) | (10) Door switch |
| (2) Security horn | (7) Trunk room light switch (Sedan),
rear gate latch switch (Wagon) | (11) Passive arm connector |
| (3) Keyless entry control module | | |
| (4) Security control module | (8) Interrupt relay | |
| (5) Security indicator light (in combination meter) | (9) Security horn relay | |

GENERAL DESCRIPTION

SECURITY AND LOCKS

5. KEYLESS ENTRY SYSTEM



- | | | |
|----------------------------------|--|-----------------------|
| (1) Horn | (3) Horn relay | (5) Door switch |
| (2) Keyless entry control module | (4) Rear gate latch switch (Wagon)/
Trunk room right switch (Sedan) | (6) Integrated module |

C: CAUTION

- Before disassembling or reassembling parts, always disconnect battery ground cable. When repairing radio, control module, etc. which are provided with memory functions, record memory contents before disconnecting battery ground cable. Otherwise, these contents are cancelled upon disconnection.
- Reassemble parts in reverse order of disassembly procedure unless otherwise indicated.
- Adjust parts to specifications contained in this manual if so designated.
- Connect connectors and hoses securely during reassembly.
- After reassembly, ensure all functional parts operate smoothly.
- Airbag system wiring harness is routed near the electrical parts and switch.
- All airbag system wiring harness and connectors are colored yellow. Do not use electrical test equipment on these circuits.

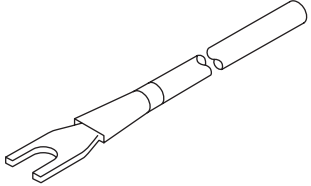
- Be careful not to damage airbag system wiring harness when servicing the ignition key cylinder.

GENERAL DESCRIPTION

SECURITY AND LOCKS

D: PREPARATION TOOL

1. SPECIAL TOOLS

ILLUSTRATION	TOOL NUMBER	DESCRIPTION	REMARKS
 ST-925580000	925580000	PULLER	Used for removing trim clip.

2. GENERAL TOOLS

TOOL NAME	REMARKS
Circuit Tester	Used for measuring resistance and voltage.
Drill	Used for replacing ignition key lock.