

READ DIAGNOSTIC TROUBLE CODE (DTC)

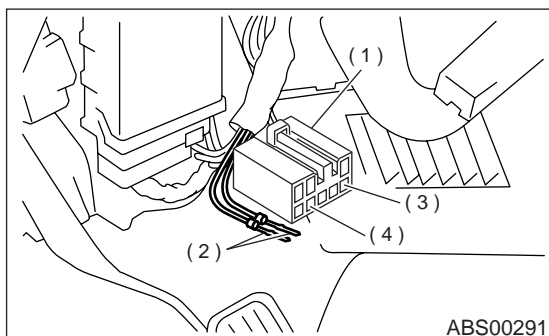
ABS (DIAGNOSTICS)

7. Read Diagnostic Trouble Code (DTC)

A: OPERATION

1. WITHOUT SUBARU SELECT MONITOR

1) Take out diagnosis connector from side of driver's seat heater unit.



- (1) Diagnosis connector
- (2) Diagnosis terminal
- (3) 8 terminal
- (4) 5 terminal

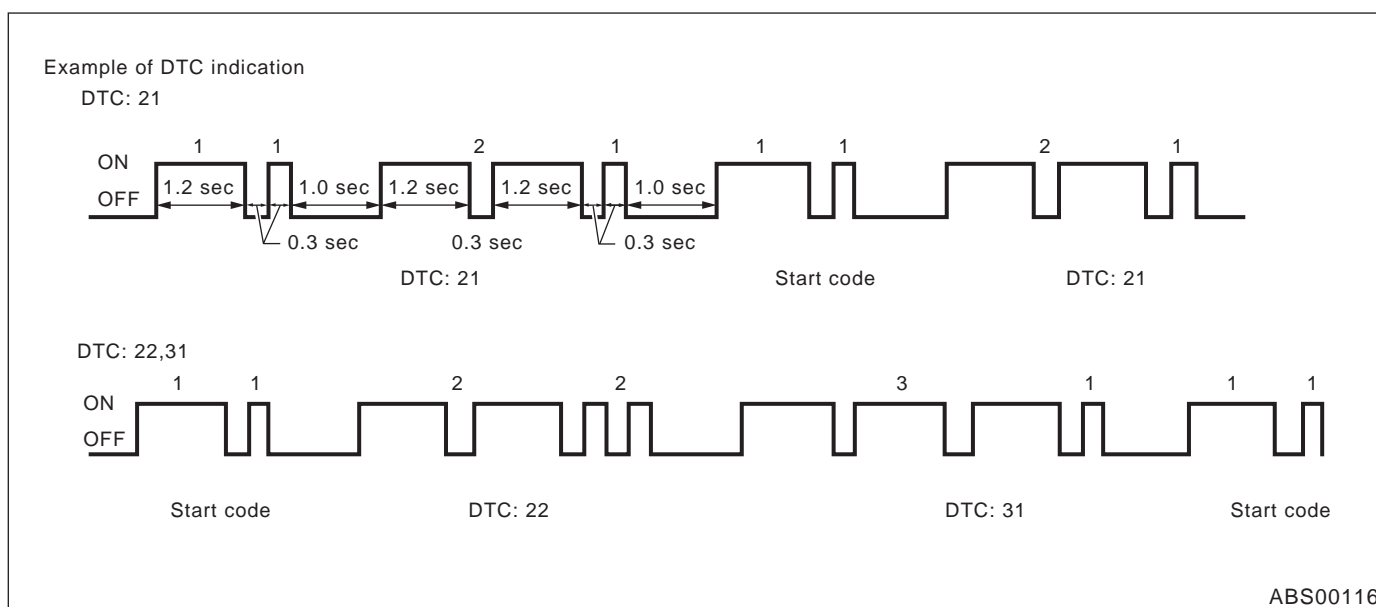
- 2) Turn ignition switch OFF.
- 3) Connect diagnosis connector terminal 8 to diagnosis terminal.
- 4) Turn ignition switch ON.
- 5) ABS warning light is set in the diagnostic mode and blinks to identify diagnostic trouble code (DTC).

6) After the start code (11) is shown, the diagnostic trouble codes (DTC) will be shown in order of the last information first.

These repeat for a maximum of 3 minutes.

NOTE:

- When there are no diagnostic trouble codes (DTC) in memory, only the start code (11) is shown.
- When on-board diagnosis of the ABS control module detects a problem, the information (up to a maximum of three) will be stored in the EEPROM as a diagnostic trouble code (DTC). When there are more than three, the most recent three will be stored. (Stored codes will stay in memory until they are cleared.)



READ DIAGNOSTIC TROUBLE CODE (DTC)

ABS (DIAGNOSTICS)

2. WITH SUBARU SELECT MONITOR

Refer to SUBARU SELECT MONITOR for information about how to obtain and understand diagnostic trouble codes (DTC). <Ref. to ABS-16, Subaru Select Monitor.>

ABS-20

Vehicle-id:
SIE-id::A:Operation
~