

GENERAL DESCRIPTION

FRONT SUSPENSION

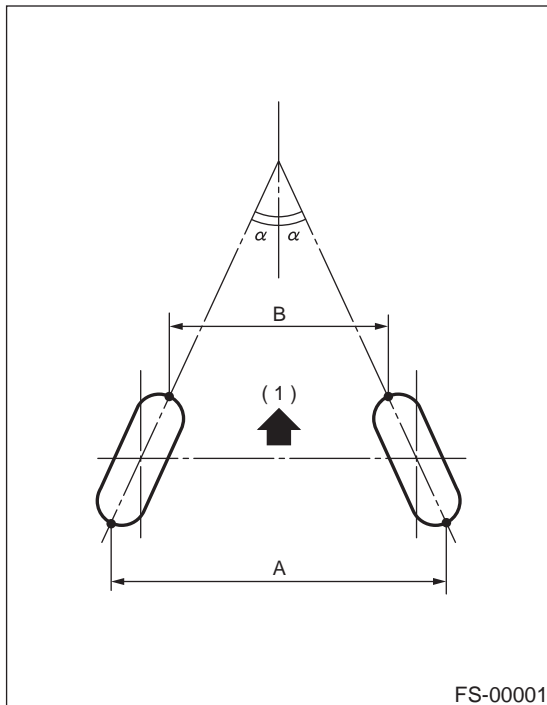
1. General Description

A: SPECIFICATIONS

	Model	Sedan	Wagon	OUTBACK
Front	Camber (Tolerance: $\pm 0^{\circ}30'$)	$-0^{\circ}05'$	$-0^{\circ}05'$	$0^{\circ}20'$
	Caster	$3^{\circ}05'$	$2^{\circ}50'$	$2^{\circ}40'$
	Toe-in	0 ± 3 mm (0 ± 0.12 in) Each toe angle: $\pm 0^{\circ}15'$		
	Kingpin angle	$14^{\circ}15'$	$14^{\circ}15'$	$13^{\circ}30'$
	Wheel arch height [Tolerance: $+12/-24$ mm ($+0.47/-0.94$ in)]	388 mm (15.28 in)	388 mm (15.28 in)	424 mm (16.69 in)
	Diameter of stabilizer	21 mm (0.79 in)		

NOTE:

- Front and rear toe-in and front camber can be adjusted. If toe-in or camber tolerance exceeds specifications, adjust toe-in and camber to the middle value of specification.
- The other items indicated in the specification table cannot be adjusted. If the other items exceed specifications, check suspension parts and connections for deformities; replace with new ones as required.



(1) Front

A - B = Positive: Toe-in, Negative: Toe-out

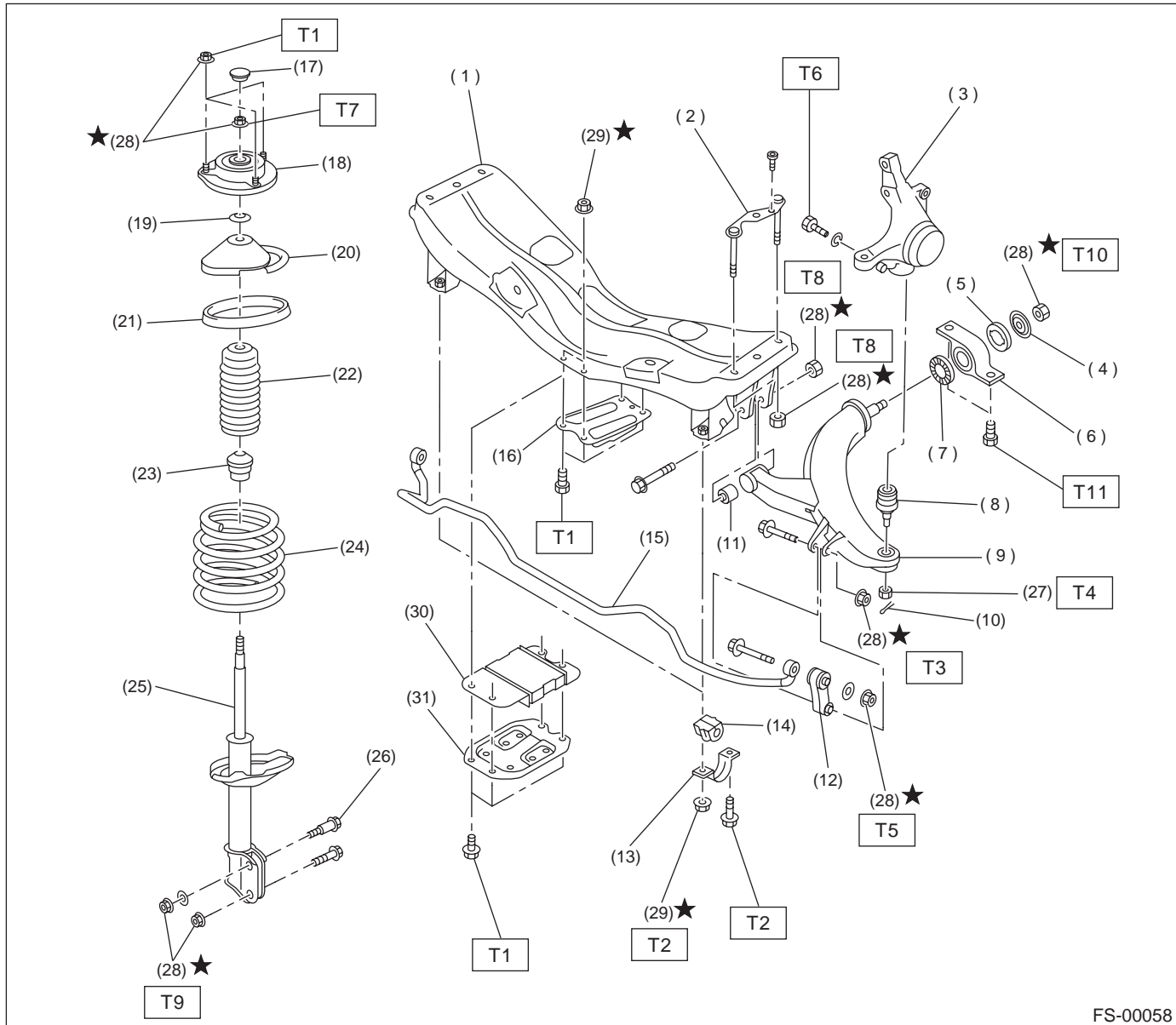
α = Each toe angle

FS-2

GENERAL DESCRIPTION

FRONT SUSPENSION

B: COMPONENT



FS-00058

- | | | |
|----------------------------|--------------------------------|-------------------------------|
| (1) Front crossmember | (16) Jack-up plate | (31) Dynamic plate (MT model) |
| (2) Bolt ASSY | (17) Dust seal | |
| (3) Housing | (18) Strut mount | |
| (4) Washer | (19) Spacer | |
| (5) Stopper rubber (Rear) | (20) Upper spring seat | |
| (6) Rear bushing | (21) Rubber seat | |
| (7) Stopper rubber (Front) | (22) Dust cover | |
| (8) Ball joint | (23) Helper | |
| (9) Transverse link | (24) Coil spring | |
| (10) Cotter pin | (25) Damper strut | |
| (11) Front bushing | (26) Adjusting bolt | |
| (12) Stabilizer link | (27) Castle nut | |
| (13) Clamp | (28) Self-locking nut | |
| (14) Bushing | (29) Flange nut | |
| (15) Stabilizer | (30) Dynamic damper (MT model) | |

Tightening torque: N·m (kgf·m, ft·lb)

- T1: 20 (2.0, 14.5)**
T2: 25 (2.5, 18.1)
T3: 30 (3.1, 22)
T4: 39 (4, 29)
T5: 45 (4.6, 33)
T6: 50 (5.1, 37)
T7: 54 (5.5, 39.8)
T8: 100 (10.2, 74)
T9: 152 (16, 116)
T10: 186 (19.0, 137)
T11: 245 (25.0, 181)

FS-3

GENERAL DESCRIPTION

FRONT SUSPENSION

C: CAUTION

- Wear working clothing, including a cap, protective goggles, and protective shoes during operation.
- Remove contamination including dirt and corrosion before removal, installation or disassembly.
- Keep the disassembled parts in order and protect them from dust or dirt.
- Before removal, installation or disassembly, be sure to clarify the failure. Avoid unnecessary removal, installation, disassembly, and replacement.
- Use SUBARU genuine grease etc. or the equivalent. Do not mix grease etc. with that of another grade or from other manufacturers.
- Be sure to tighten fasteners including bolts and nuts to the specified torque.
- Place shop jacks or safety stands at the specified points.
- Apply grease onto sliding or revolution surfaces before installation.
- Before installing O-rings or snap rings, apply sufficient amount of grease to avoid damage and deformation.
- Before securing a part on a vise, place cushioning material such as wood blocks, aluminum plate, or shop cloth between the part and the vise.

FS-4

GENERAL DESCRIPTION

FRONT SUSPENSION

D: PREPARATION TOOL

1. SPECIAL TOOLS

ILLUSTRATION	TOOL NUMBER	DESCRIPTION	REMARKS
<p>ST-927380002</p>	927380002	ADAPTER	Used as an adapter for camber & caster gauge when measuring camber and caster. (1) 28199AC000 PLATE (2) 28199AC010 BOLT
<p>ST-927680000</p>	927680000	INSTALLER & REMOVER SET	Used for replacing transverse link bushing.
<p>ST-927760000</p>	927760000	STRUT MOUNT SOCKET	Used for disassembling and assembling strut and shock mount.

2. GENERAL PURPOSE TOOLS

TOOL NAME	REMARKS
Alignment gauge	Used for wheel alignment measurement.
Turning radius gauge	Used for wheel alignment measurement.
Toe-in gauge	Used for toe-in measurement.
Dial gauge	Used for damper strut measurement.

FS-5