

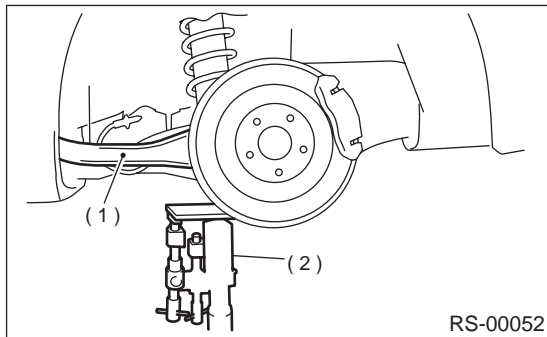
## LINK UPPER

### REAR SUSPENSION

#### 5. Link Upper

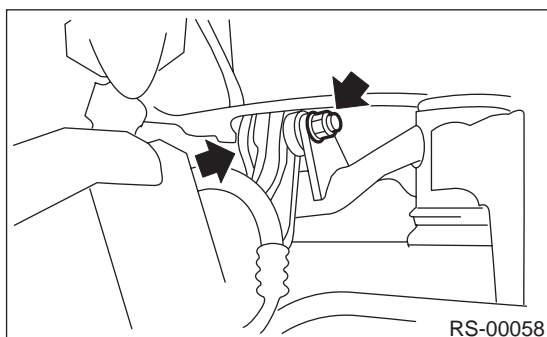
##### A: REMOVAL

- 1) Loosen wheel nuts. Lift-up vehicle and remove wheel.
- 2) Use transmission jack to support rear arm horizontally.

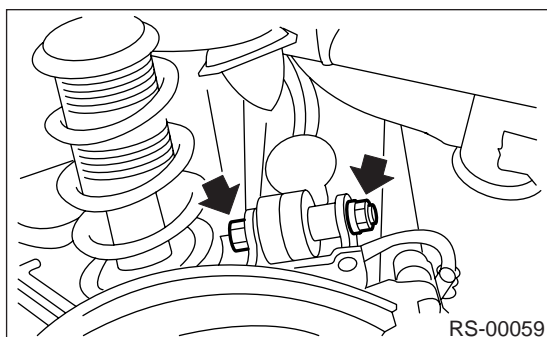


- (1) Rear arm
- (2) Transmission jack

- 3) Remove bolt securing link upper to sub frame.



- 4) Remove bolts which secure link upper to rear arm and detach link upper.

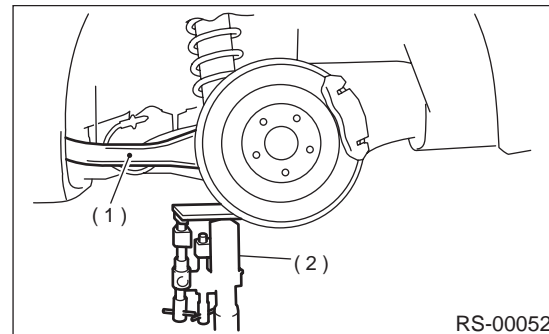


##### B: INSTALLATION

Install in the reverse order of removal, observing the following instructions.

##### CAUTION:

- Using transmission jack, support rear arm horizontally, install link upper and tighten nuts to specified torque.



- (1) Rear arm
- (2) Transmission jack

- Tighten nut when installing adjusting bolt.
- Replace self-locking nut.

##### NOTE:

Check wheel alignment and adjust if necessary.

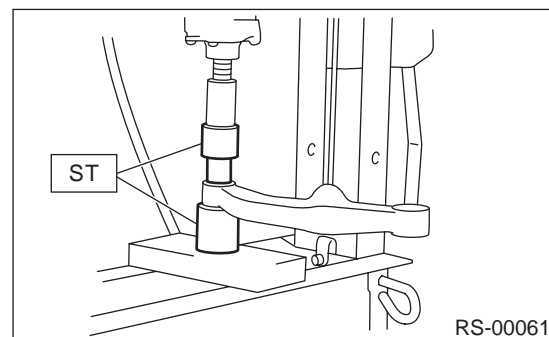
##### Tightening torque:

**120 N·m (12.2 kgf·m, 88 ft·lb)**

##### C: DISASSEMBLY

Using ST, press bushing out of place.

ST 20099AE010 INSTALLER & REMOVER



## LINK UPPER

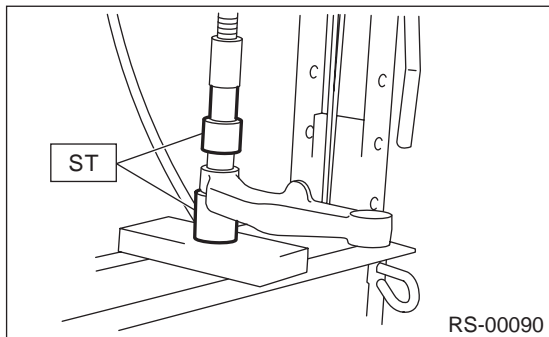
REAR SUSPENSION

### D: ASSEMBLY

- 1) Using ST, press bushing into place.  
ST 20099AE010 INSTALLER & REMOVER

#### CAUTION:

Outer bushing has a “directional” design. Be sure to install bushing with longer inner housing side facing vehicle rear.



### E: INSPECTION

Visually check link upper for damage or bends.

RS-15