

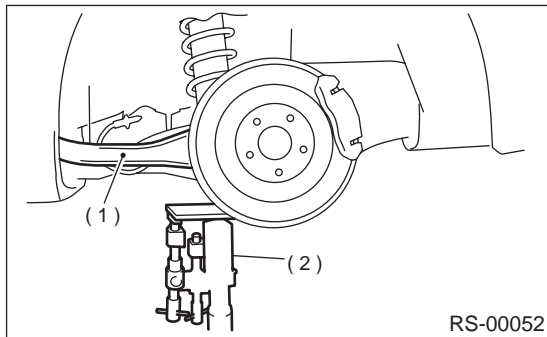
LINK FRONT

REAR SUSPENSION

7. Link Front

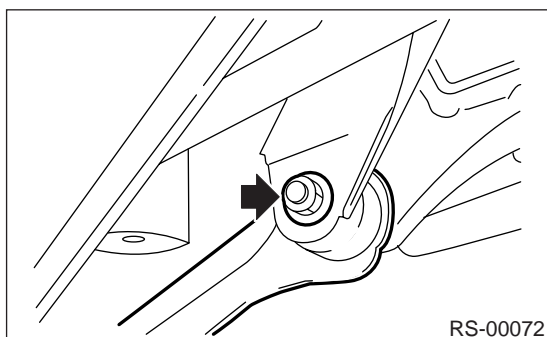
A: REMOVAL

- 1) Loosen wheel nuts. Lift-up vehicle and remove wheel.
- 2) Use transmission jack to support rear arm horizontally.

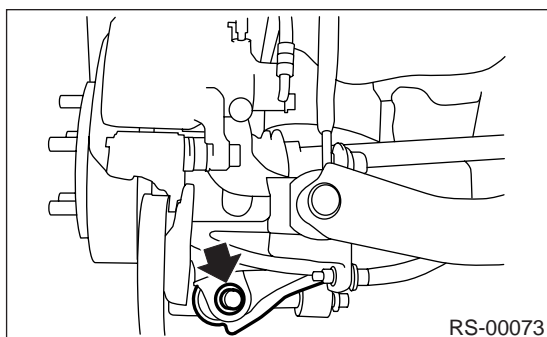


- (1) Rear arm
- (2) Transmission jack

- 3) Remove bolt securing link front to sub frame.



- 4) Remove bolts which secure link front to rear arm and detach link front.



NOTE:

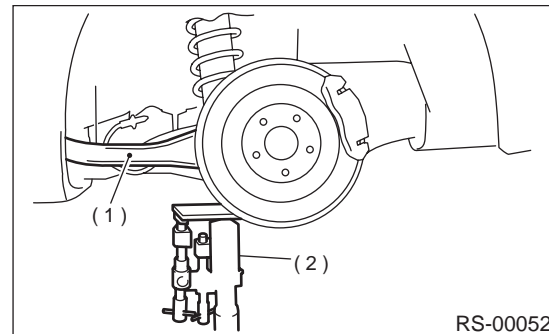
Link front bushing cannot be replaced alone. Always replace link front and bushing as a single unit.

B: INSTALLATION

Install in the reverse order of removal, observing the following instructions.

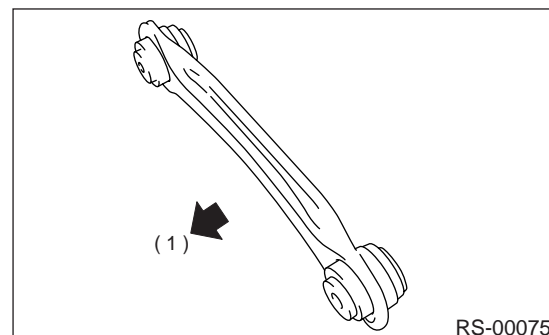
CAUTION:

- Using transmission jack, support rear arm horizontally, install link front and tighten nuts to specified torque.



- (1) Rear arm
- (2) Transmission jack

- Install link front with protruded side facing front.



- (1) Front

- Replace self-locking nut.

NOTE:

Check wheel alignment and adjust if necessary.

Tightening torque:

120 N·m (12.2 kgf·m, 88 ft·lb)

C: INSPECTION

Visually check link front for damage or bends.

RS-18