

GENERAL DESCRIPTION

VDC

1. General Description

A: SPECIFICATIONS

Item		Standard or remarks	
ABS sensor	ABS sensor gap	Front	0.3 — 0.8 mm (0.012 — 0.031 in)
		Rear	0.44 — 0.94 mm (0.0173 — 0.0370 in)
	ABS sensor resistance		1.25±0.25 kΩ
	Marks of the harness	Front LH	Brown
		Front RH	Light blue
		Rear LH	Yellow
Rear RH		White	
Yaw rate and lateral G sensor	Lateral G sensor voltage	2.5±0.2 V	
VDC hydraulic control unit marks		D2	
VDC control module marks		P	

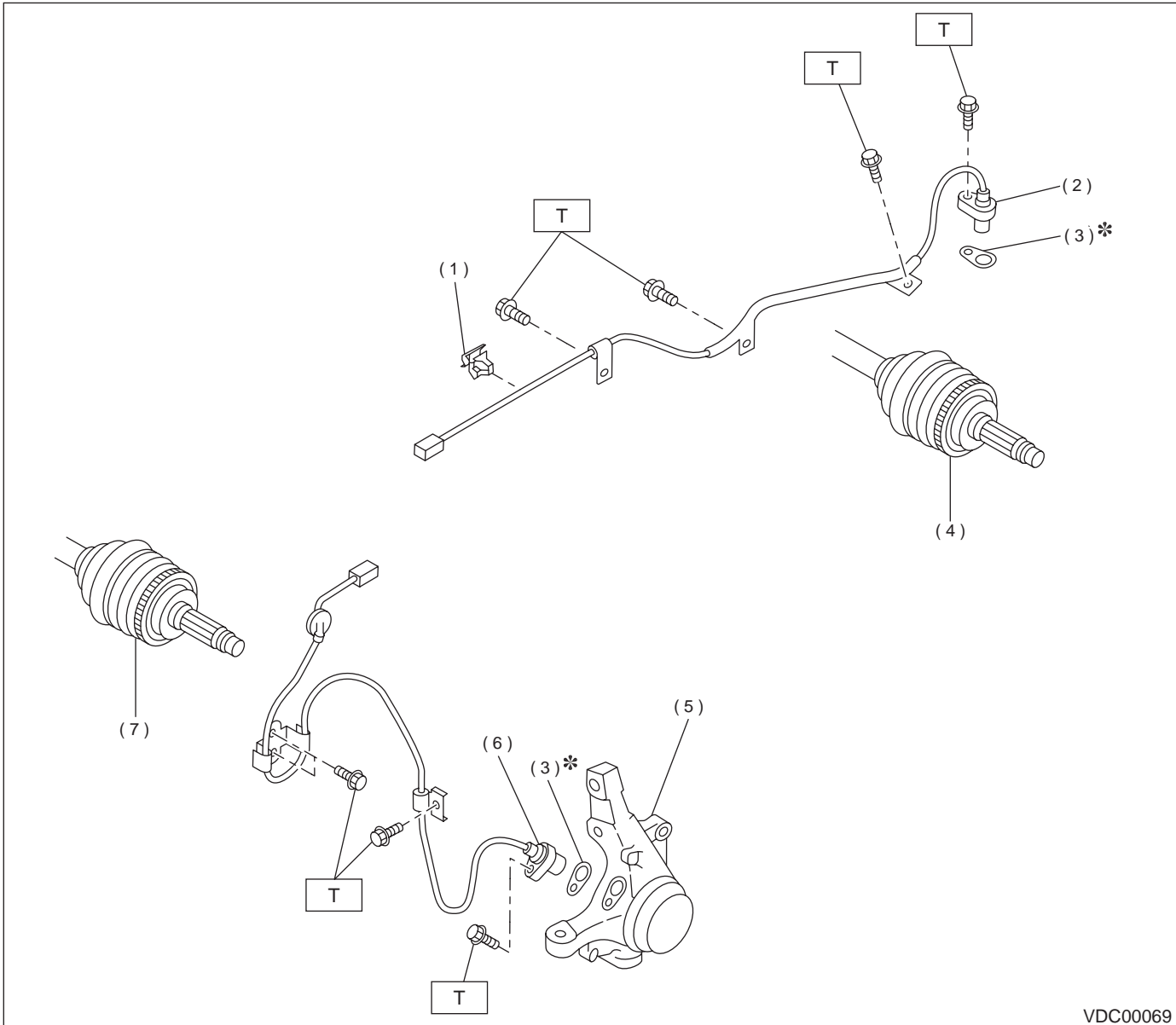
VDC-2

GENERAL DESCRIPTION

VDC

B: COMPONENT

1. ABS SENSOR



- (1) Clip
- (2) Rear ABS sensor
- (3) ABS spacer
- (4) Tone wheel (Rear)
- (5) Housing
- (6) Front ABS sensor
- (7) Tone wheel (Front)

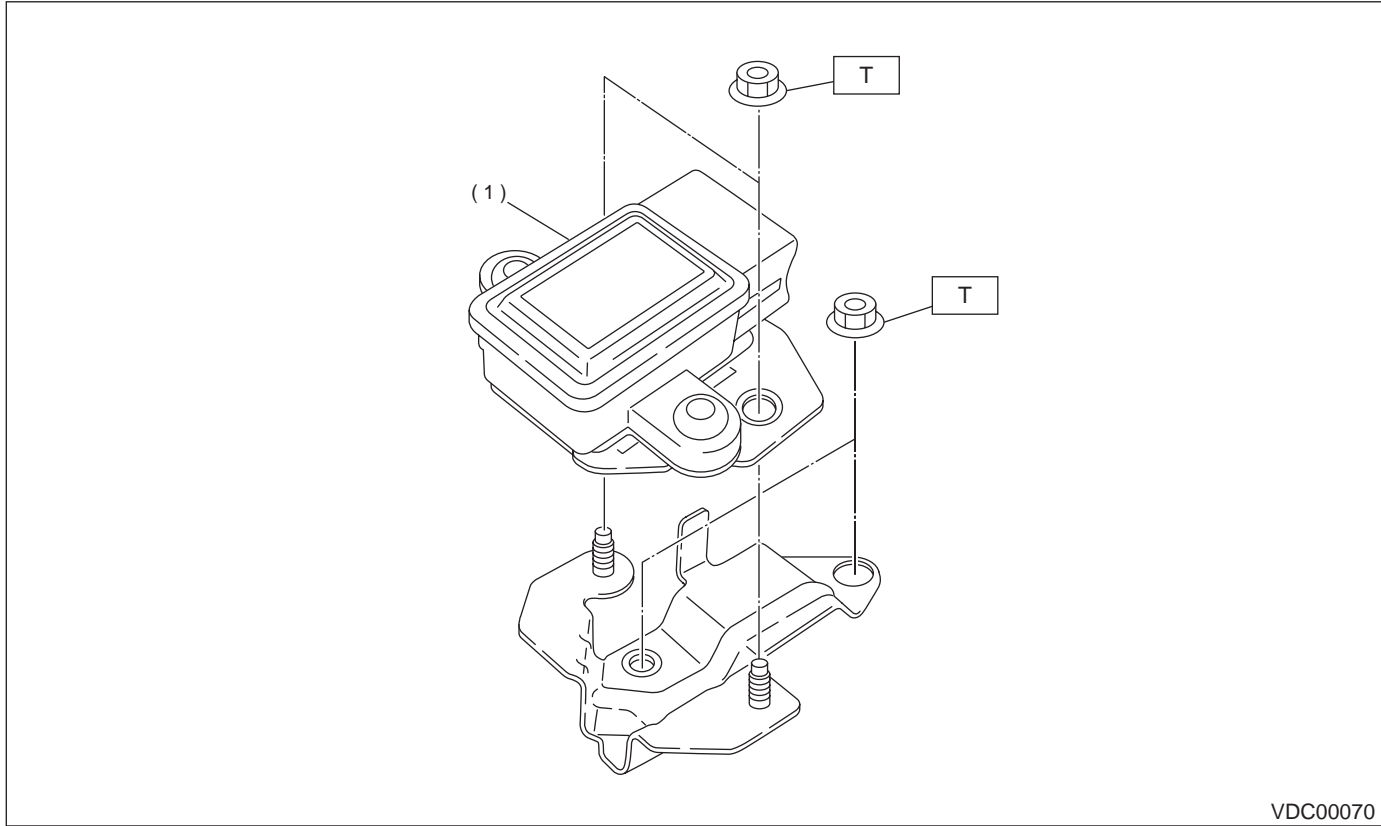
Tightening torque: N·m (kgf·m, ft·lb)
T: 32 (3.3, 24)

VDC-3

GENERAL DESCRIPTION

VDC

2. YAW RATE AND LATERAL G SENSOR

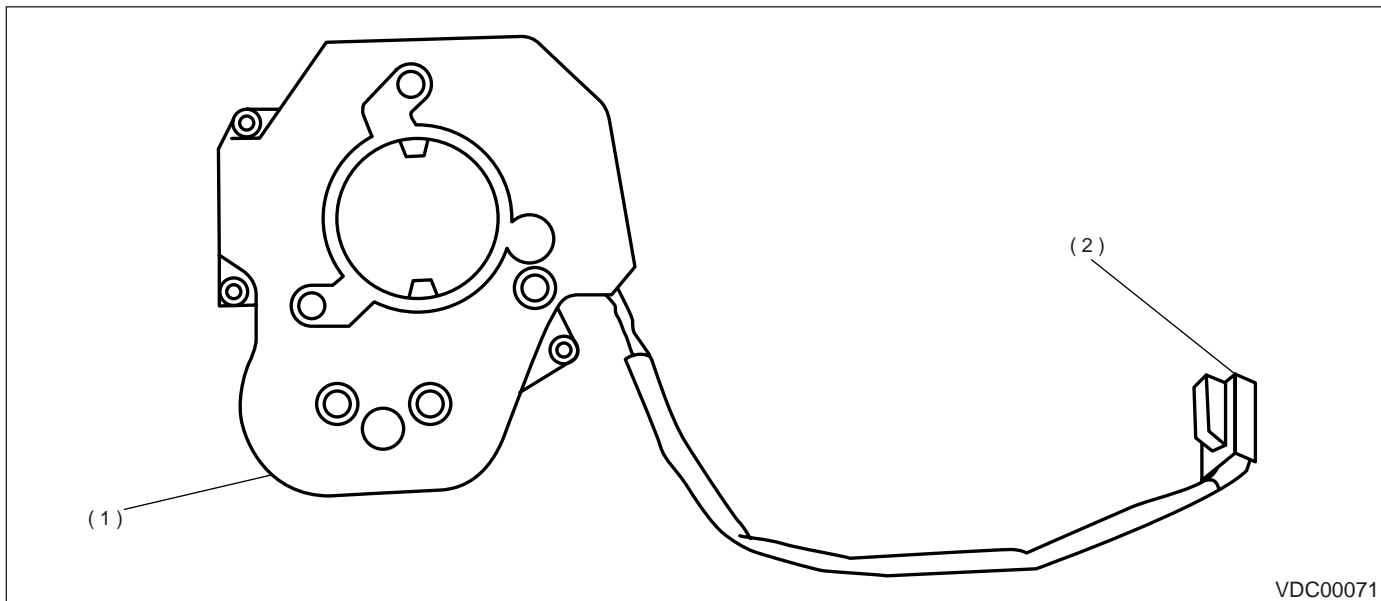


VDC00070

(1) Yaw rate and lateral G sensor

Tightening torque: N·m (kgf·m, ft·lb)
T: 7.5 (0.76, 5.5)

3. STEERING ANGLE SENSOR



VDC00071

(1) Steering angle sensor

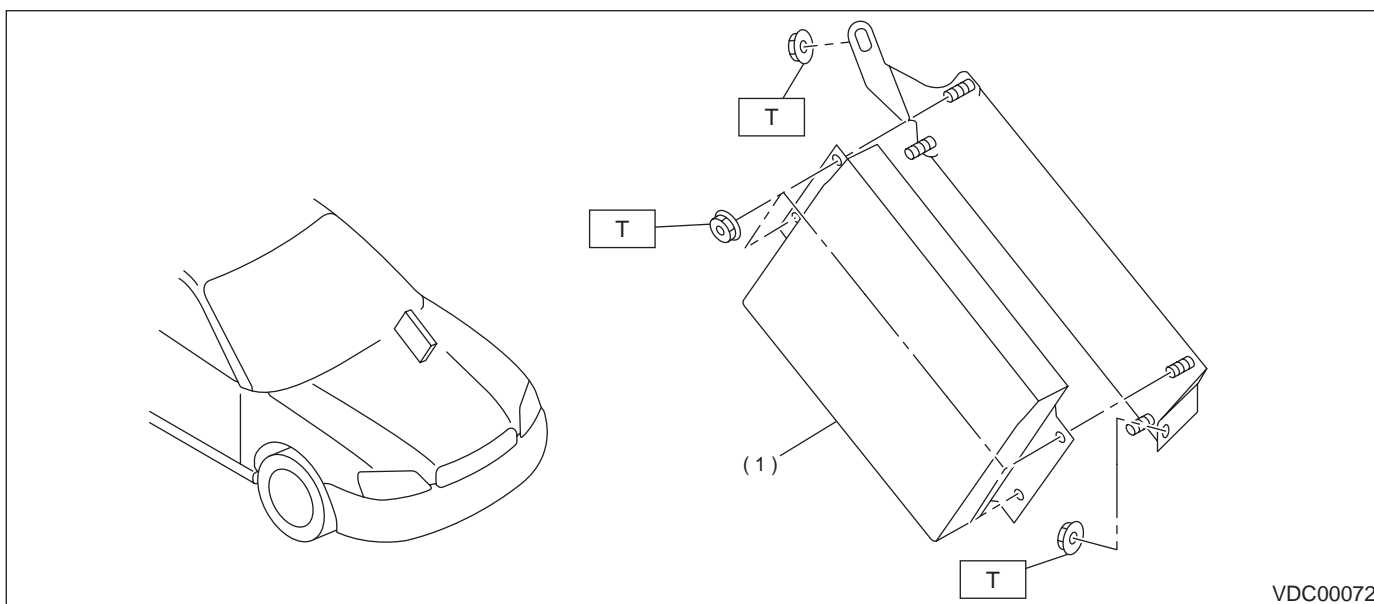
(2) Connector

VDC-4

GENERAL DESCRIPTION

VDC

4. VDC CONTROL MODULE (VDCCM)



(1) VDC control module

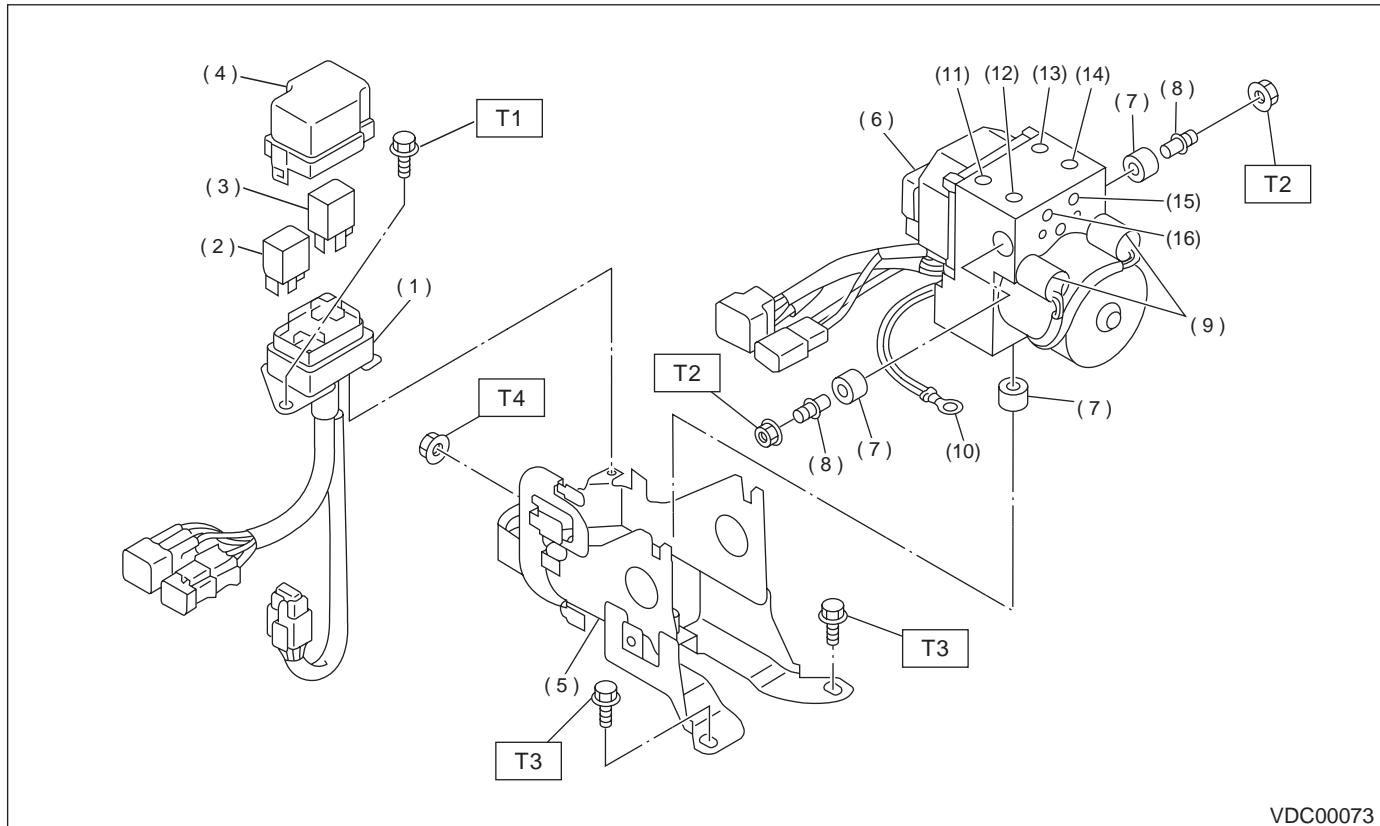
Tightening torque: N·m (kgf·m, ft·lb)
T: 7.5 (0.76, 5.5)

VDC-5

GENERAL DESCRIPTION

VDC

5. HYDRAULIC CONTROL UNIT (H/U)



VDC00073

- | | |
|----------------------------|----------------------|
| (1) Relay box | (9) Pressure sensor |
| (2) Motor relay | (10) Ground terminal |
| (3) Valve relay | (11) Front-LH outlet |
| (4) Cap | (12) Secondary inlet |
| (5) Bracket | (13) Front-RH outlet |
| (6) Hydraulic control unit | (14) Primary inlet |
| (7) Damper | (15) Rear-LH outlet |
| (8) Stud bolt | (16) Rear-RH outlet |

Tightening torque: N·m (kgf·m, ft·lb)

T1: 13 (1.3, 9.4)

T2: 18 (1.8, 13.0)

T3: 33 (3.4, 24.6)

T4: 38 (3.9, 28)

VDC-6

GENERAL DESCRIPTION

VDC

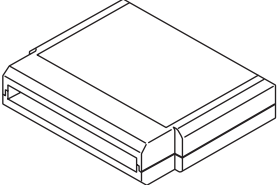

C: CAUTION

- Wear working clothing, including, a cap, protective goggles, and protective shoes during operation.
- Remove contamination including dirt and corrosion before removal, installation or disassembly.
- Keep the disassembled parts in order and protect them from dust or dirt.
- Before removal, installation or disassembly, be sure to clarify the failure. Avoid unnecessary removal, installation, disassembly, and replacement.

- Be careful not to burn your hands, because each part on the vehicle is hot after running.
- Be sure to tighten fasteners including bolts and nuts to the specified torque.
- Place shop jacks or safety stands at the specified points.
- Before disconnecting electrical connectors of sensors or units, be sure to disconnect ground cable from battery.

D: PREPARATION TOOL

1. SPECIAL TOOLS

ILLUSTRATION	TOOL NUMBER	DESCRIPTION	REMARKS
 <p>ST24082AA210</p>	24082AA210	CARTRIDGE	Troubleshooting for electrical systems.
 <p>ST22771AA030</p>	22771AA030	SELECT MONITOR KIT	Troubleshooting for electrical systems. <ul style="list-style-type: none"> • English: 22771AA030 (Without printer) • German: 22771AA070 (Without printer) • French: 22771AA080 (Without printer) • Spanish: 22771AA090 (Without printer)

2. GENERAL PURPOSE TOOLS

TOOL NAME	REMARKS
Circuit Tester	Used for measuring resistance, voltage and ampere.
Pressure Gauge	Used for measuring oil pressure.
Oscilloscope	Used for measuring sensor.

VDC-7