

GENERAL DESCRIPTION

FUEL INJECTION (FUEL SYSTEMS)

1. General Description

A: SPECIFICATIONS

Model		
Fuel tank	Capacity	64 ℓ (16.9 US gal, 14.1 Imp gal)
	Location	Under rear seat
Fuel pump	Type	Impeller
	Shutoff discharge pressure	370 — 677 kPa (3.77 — 6.9 kg/cm ² , 53.6 — 98 psi)
	Discharge flow	More than 65 ℓ (17.2 US gal, 14.3 Imp gal)/h [12 V at 300 kPa (3.06 kg/cm ² , 43.5 psi)]
Fuel filter		Cartridge type

FU(H4SO)-2

GENERAL DESCRIPTION

FUEL INJECTION (FUEL SYSTEMS)

MEMO:

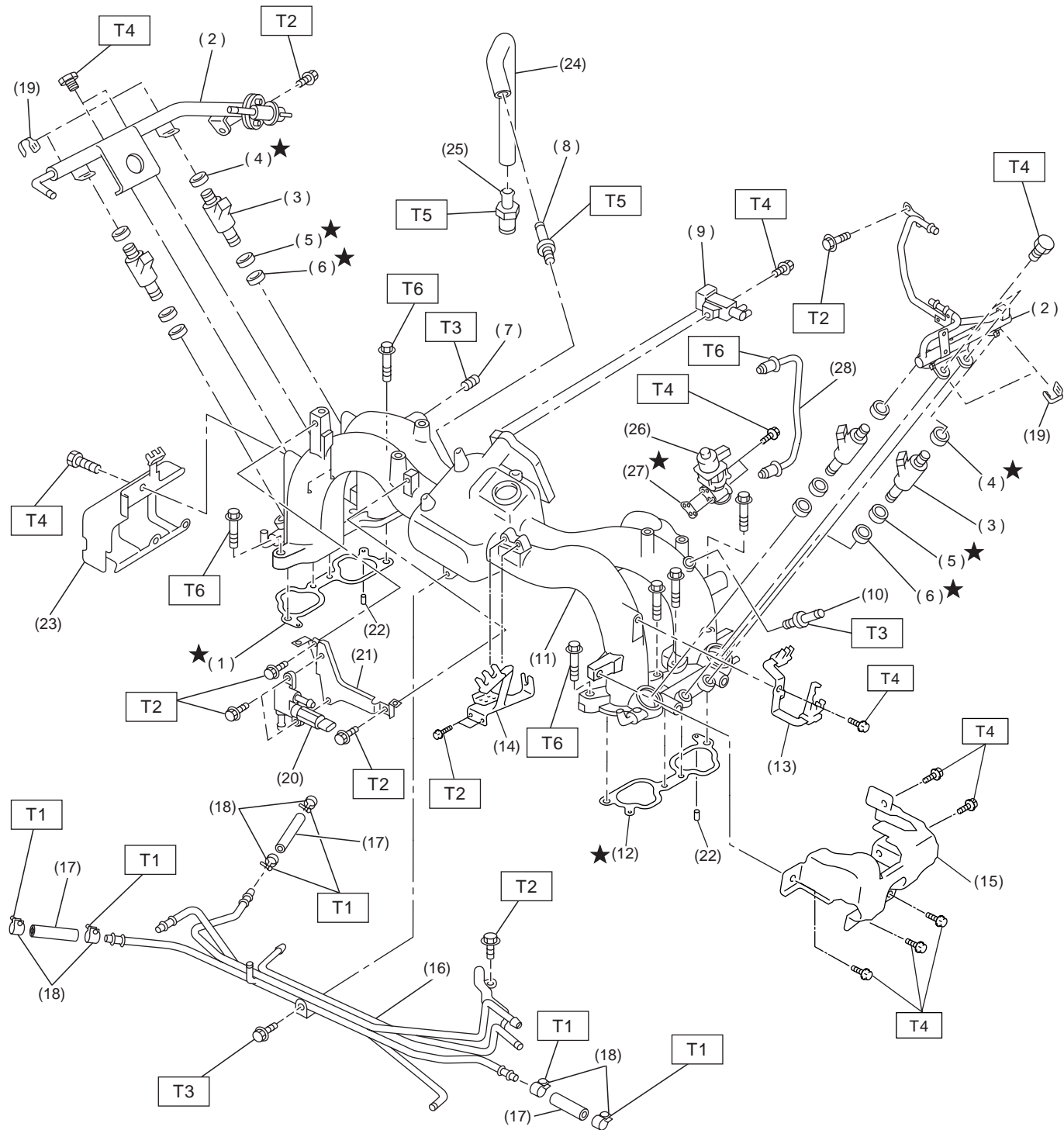
FU(H4SO)-3

GENERAL DESCRIPTION

FUEL INJECTION (FUEL SYSTEMS)

B: COMPONENT

1. INTAKE MANIFOLD



FU-00423

FU(H4SO)-4

GENERAL DESCRIPTION

FUEL INJECTION (FUEL SYSTEMS)

- (1) Intake manifold gasket RH
- (2) Fuel injector pipe
- (3) Fuel injector
- (4) O-ring
- (5) O-ring
- (6) O-ring
- (7) Plug
- (8) Nipple
- (9) Purge control solenoid valve
- (10) Nipple
- (11) Intake manifold
- (12) Intake manifold gasket LH
- (13) Plug cord holder LH

- (14) Accelerator cable bracket
- (15) Fuel pipe protector LH
- (16) Fuel pipe ASSY
- (17) Fuel hose
- (18) Clip
- (19) Clip
- (20) Air assist injector solenoid valve
- (21) Air assist injector solenoid valve bracket
- (22) Guide pin
- (23) Fuel pipe protector RH
- (24) PCV hose
- (25) PCV valve

- (26) EGR valve
- (27) EGR valve gasket
- (28) EGR pipe

Tightening torque: N·m (kgf-m, ft-lb)

T1: 1.5 (0.15, 1.1)

T2: 5.0 (0.51, 3.7)

T3: 17 (1.7, 12)

T4: 19 (0.19, 1.4)

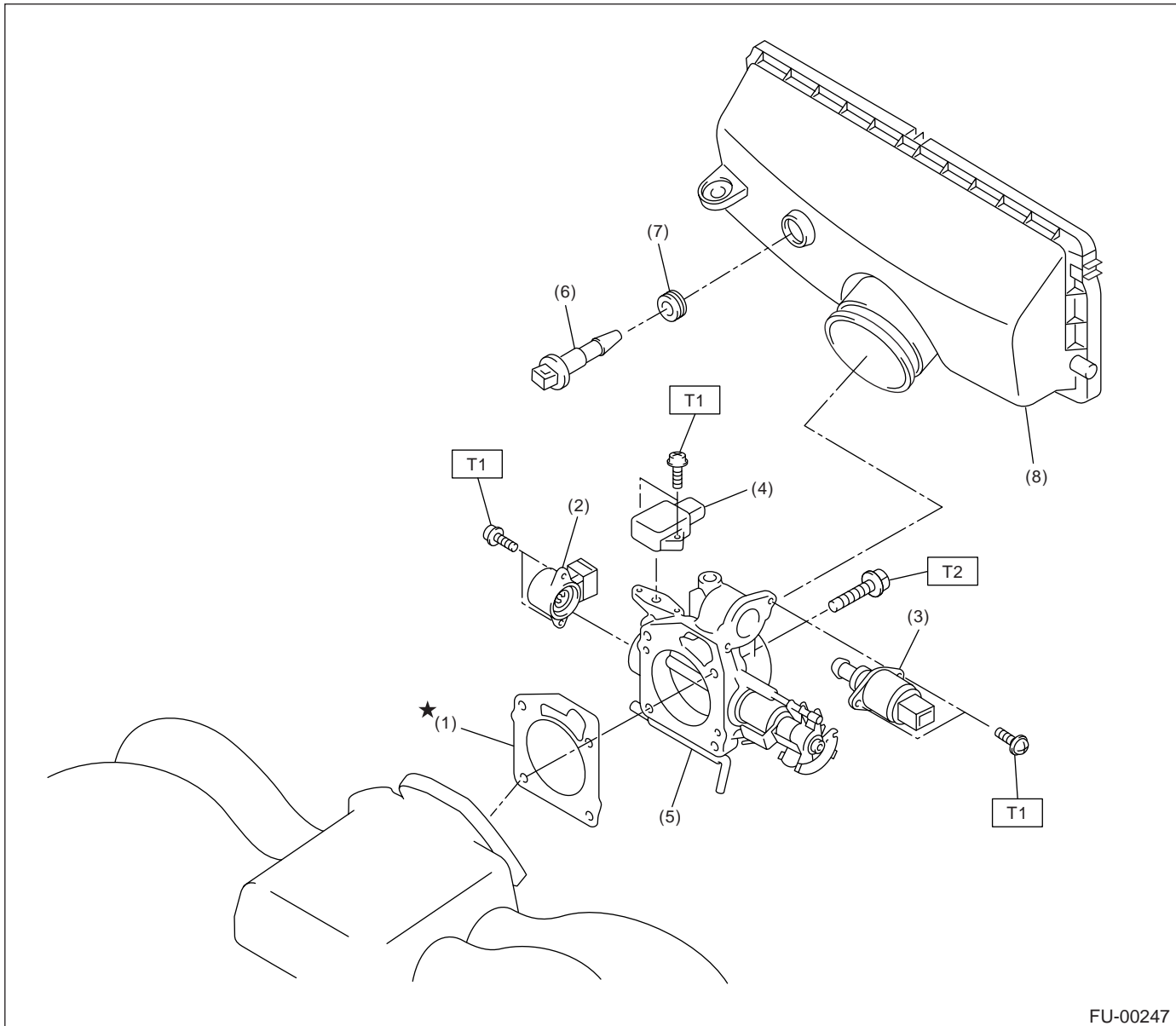
T5: 22.5 (2.29, 16.6)

T6: 25 (2.6, 18.8)

GENERAL DESCRIPTION

FUEL INJECTION (FUEL SYSTEMS)

2. AIR INTAKE SYSTEM



FU-00247

- | | |
|-------------------------------------|-----------------------------------|
| (1) Gasket | (5) Throttle body |
| (2) Throttle position sensor | (6) Intake air temperature sensor |
| (3) Idle air control solenoid valve | (7) Grommet |
| (4) Pressure sensor | (8) Air cleaner case |

Tightening torque: N·m (kgf-m, ft-lb)

T1: 2.4 (0.24, 1.7)

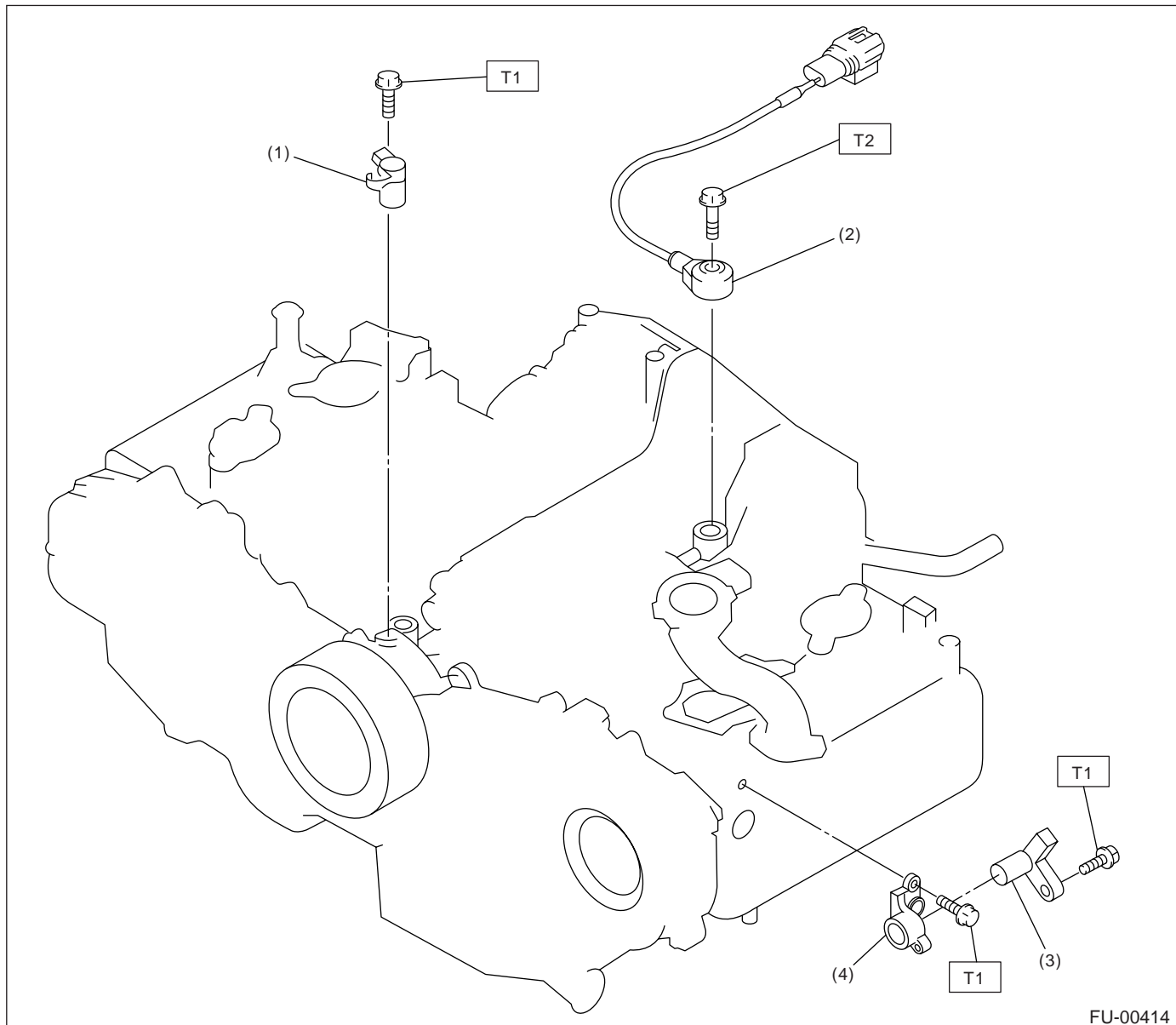
T2: 22 (2.2, 16)

FU(H4SO)-6

GENERAL DESCRIPTION

FUEL INJECTION (FUEL SYSTEMS)

3. CRANKSHAFT POSITION, CAMSHAFT POSITION AND KNOCK SENSORS



FU-00414

- (1) Crankshaft position sensor
- (2) Knock sensor

- (3) Camshaft position sensor
- (4) Camshaft position sensor support

Tightening torque: N·m (kgf·m, ft·lb)

T1: 6.4 (0.65, 4.7)

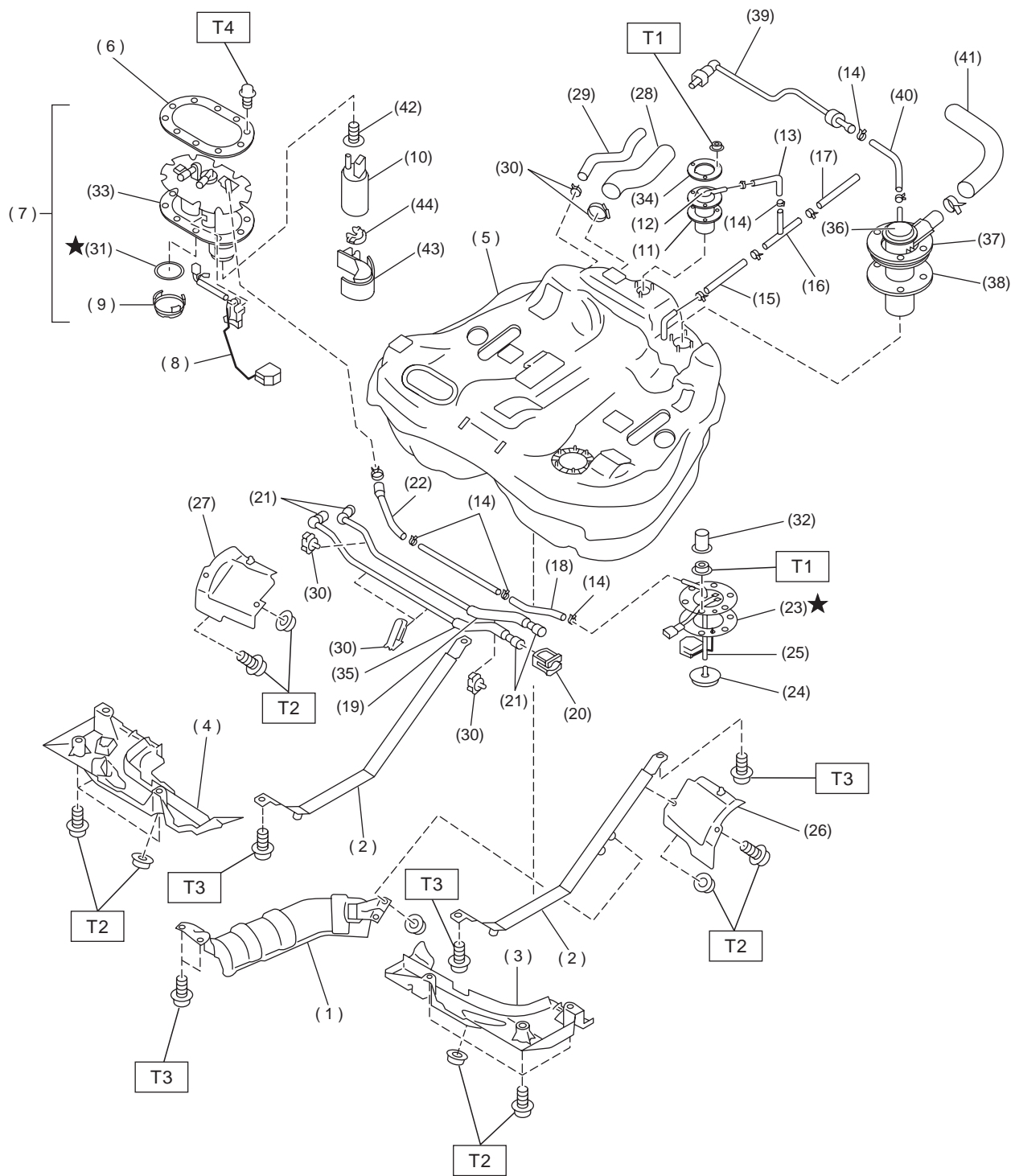
T2: 24 (2.4, 17.4)

FU(H4SO)-7

GENERAL DESCRIPTION

FUEL INJECTION (FUEL SYSTEMS)

4. FUEL TANK



FU-00424

FU(H4SO)-8

GENERAL DESCRIPTION

FUEL INJECTION (FUEL SYSTEMS)

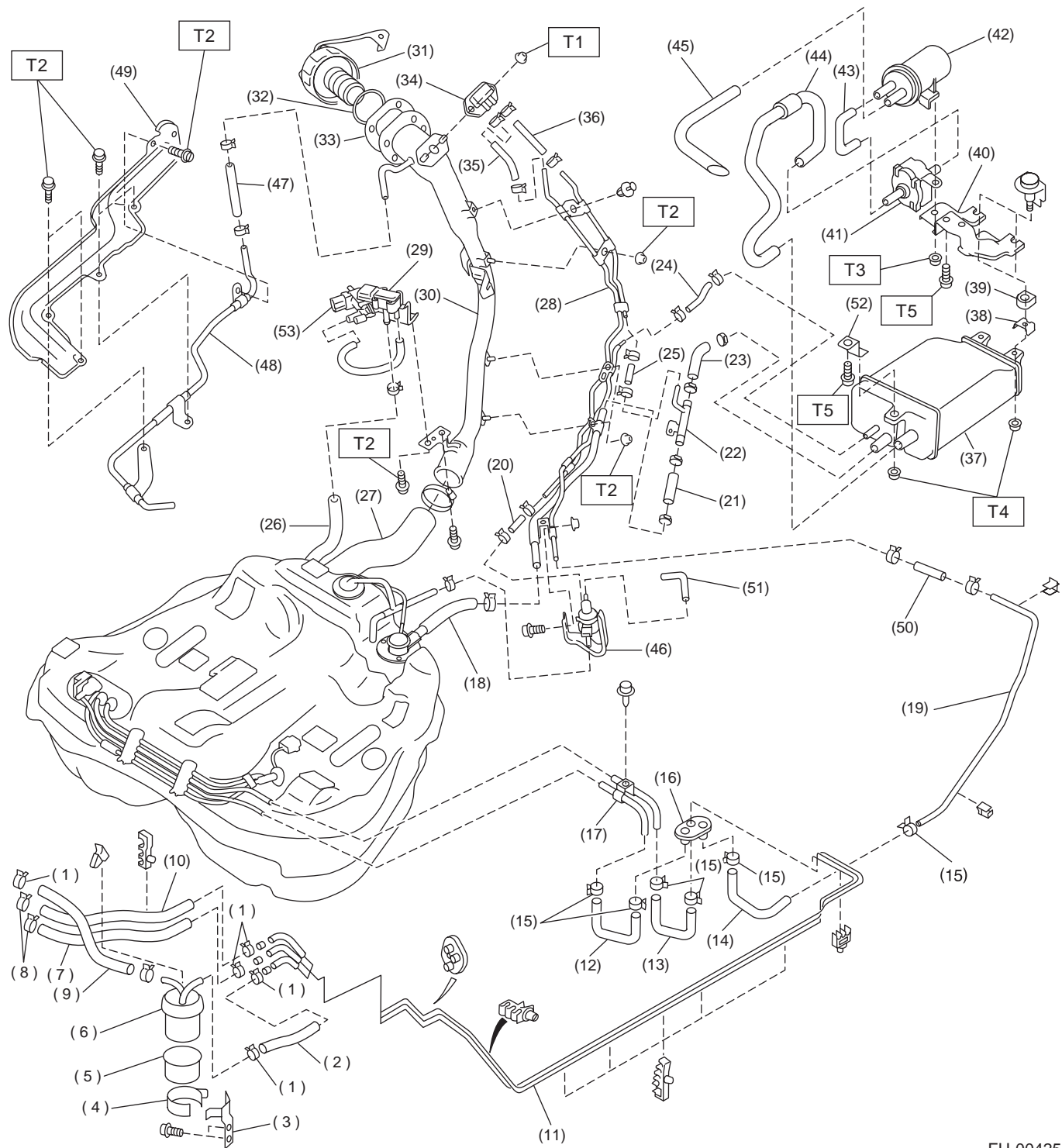
(1) Heat sealed cover	(18) Jet pump hose A	(35) Fuel delivery tube
(2) Fuel tank band	(19) Fuel return tube	(36) Vent valve
(3) Protector LH (Front)	(20) Retainer	(37) Vent valve plate
(4) Protector RH (Front)	(21) Quick connector	(38) Vent valve gasket
(5) Fuel tank	(22) Jet pump hose B	(39) Evaporation tube
(6) Fuel pump plate	(23) Fuel sub level sensor gasket	(40) Evaporation hose D
(7) Fuel pump ASSY	(24) Jet pump filter	(41) Air vent hose
(8) Fuel level sensor	(25) Fuel sub level sensor	(42) Seal
(9) Cap	(26) Protector LH (Rear)	(43) Fuel pump holder
(10) Fuel pump	(27) Protector RH (Rear)	(44) Grommet
(11) Fuel cut valve gasket	(28) Fuel filler hose	
(12) Fuel cut valve	(29) Fuel tank pressure sensor hose	
(13) Evaporation hose A	(30) Clamp	
(14) Clip	(31) Gasket	
(15) Evaporation hose C	(32) Cap	
(16) Joint pipe	(33) Gasket	
(17) Evaporation hose B	(34) Fuel cut valve plate	

Tightening torque: N·m (kgf-m, ft-lb)**T1: 4.4 (0.45, 3.3)****T2: 18 (1.8, 13.0)****T3: 33 (3.4, 25)****T4: 5.9 (0.6, 4.3)**

GENERAL DESCRIPTION

FUEL INJECTION (FUEL SYSTEMS)

5. FUEL LINE



FU-00425

FU(H4SO)-10

GENERAL DESCRIPTION

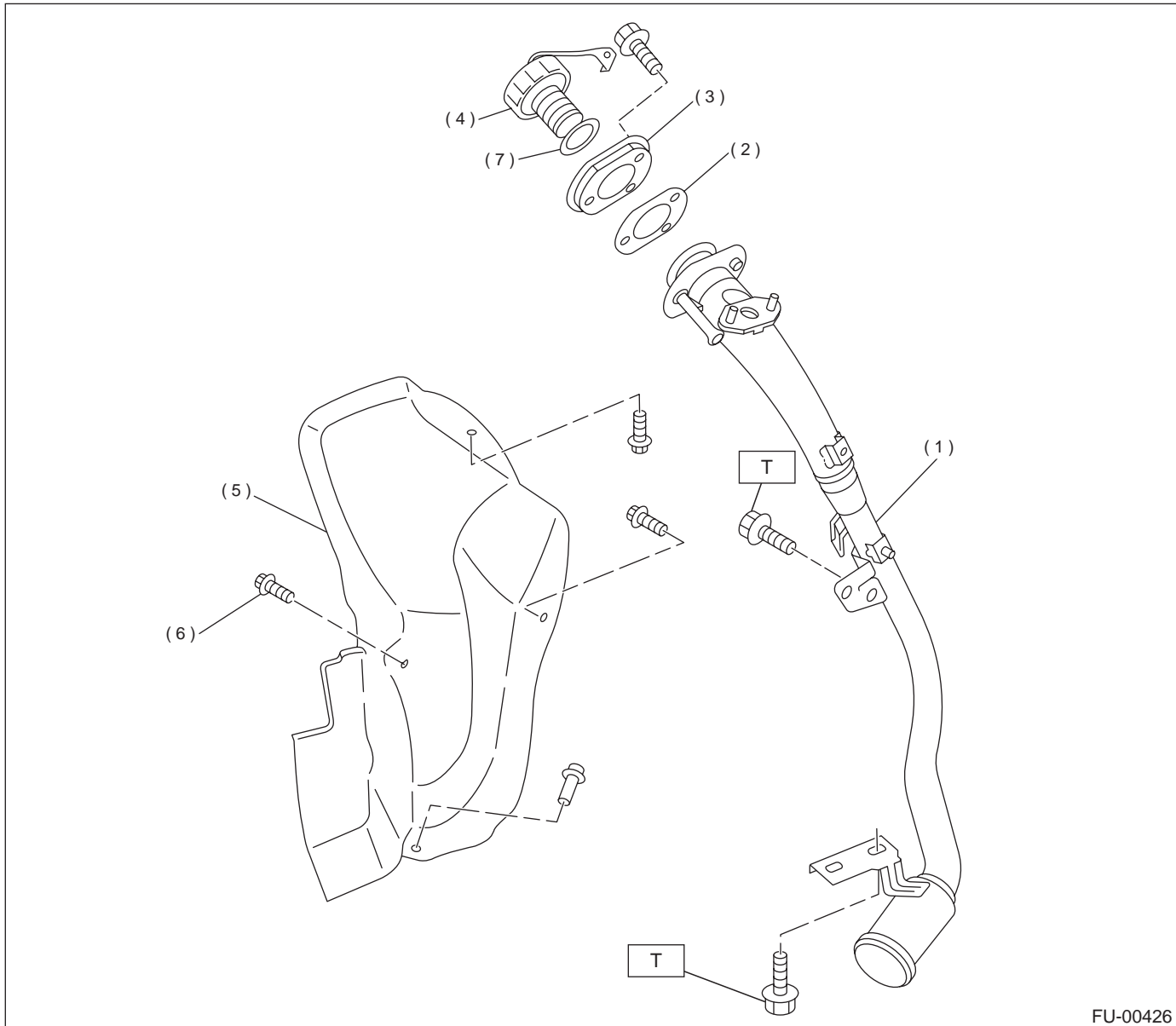
FUEL INJECTION (FUEL SYSTEMS)

(1) Clamp	(23) Evaporation hose I	(45) Drain filter hose B
(2) Fuel delivery hose A	(24) Evaporation hose J	(46) Pressure control solenoid valve
(3) Fuel filter bracket	(25) Evaporation hose K	(47) Evaporation hose N
(4) Fuel filter holder	(26) Fuel tank pressure sensor hose	(48) Evaporation pipe C
(5) Fuel filter cup	(27) Fuel filler hose	(49) Pipe protector
(6) Fuel filter	(28) Evaporation pipe B	(50) Evaporation hose O
(7) Evaporation hose F	(29) Fuel tank pressure sensor	(51) Pressure control solenoid valve hose
(8) Clip	(30) Fuel filler pipe	(52) Canister bracket (front)
(9) Fuel delivery hose B	(31) Fuel filler cap	(53) Fuel tank sensor control valve
(10) Fuel return hose	(32) Ring B	
(11) Fuel pipe ASSY	(33) Packing	
(12) Fuel delivery hose C	(34) Shut valve	Tightening torque: N·m (kgf-m, ft-lb)
(13) Fuel return hose C	(35) Evaporation hose L	T1: 4.5 (0.46, 3.3)
(14) Evaporation hose G	(36) Evaporation hose M	T2: 7.5 (0.76, 5.5)
(15) Clamp	(37) Canister	T3: 18 (1.8, 13.0)
(16) Grommet	(38) Canister lower bracket	T4: 23 (2.3, 16.6)
(17) Fuel pipe ASSY	(39) Cushion rubber	T5: 33 (3.4, 25)
(18) Air vent hose A	(40) Canister upper bracket	
(19) Evaporation pipe A	(41) Drain valve	
(20) Evaporation hose H	(42) Drain filter	
(21) Air vent hose B	(43) Drain filter hose A	
(22) Air vent pipe	(44) Drain valve hose	

GENERAL DESCRIPTION

FUEL INJECTION (FUEL SYSTEMS)

6. FUEL FILLER PIPE



FU-00426

- (1) Fuel filler pipe ASSY
- (2) Filler pipe packing
- (3) Filler ring
- (4) Filler cap

- (5) Filler pipe protector
- (6) Clip
- (7) Ring B

Tightening torque: N·m (kgf-m, ft-lb)

T: 7.5 (0.75, 5.4)

FU(H4SO)-12

GENERAL DESCRIPTION

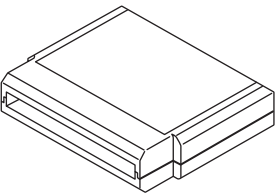

FUEL INJECTION (FUEL SYSTEMS)

C: CAUTION

- Wear working clothing, including a cap, protective goggles, and protective shoes during operation.
- Remove contamination including dirt and corrosion before removal, installation or disassembly.
- Keep the disassembled parts in order and protect them from dust or dirt.
- Before removal, installation or disassembly, be sure to clarify the failure. Avoid unnecessary removal, installation, disassembly, and replacement.

- Be careful not to burn your hands, because each part on the vehicle is hot after running.
- Be sure to tighten fasteners including bolts and nuts to the specified torque.
- Place shop jacks or safety stands at the specified points.
- Before disconnecting electrical connectors of sensors or units, be sure to disconnect ground cable from battery.
- Place "NO FIRE" signs near the working area.
- Be careful not to spill fuel on the floor.

D: PREPARATION TOOL

ILLUSTRATION	TOOL NUMBER	DESCRIPTION	REMARKS
 ST24082AA210	24082AA210 (Newly adopted tool)	CARTRIDGE	Troubleshooting for electrical systems.
 ST22771AA030	22771AA030	SELECT MONITOR KIT	Troubleshooting for electrical systems. <ul style="list-style-type: none"> • English: 22771AA030 (Without printer) • German: 22771AA070 (Without printer) • French: 22771AA080 (Without printer) • Spanish: 22771AA090 (Without printer)