

GENERAL DESCRIPTION

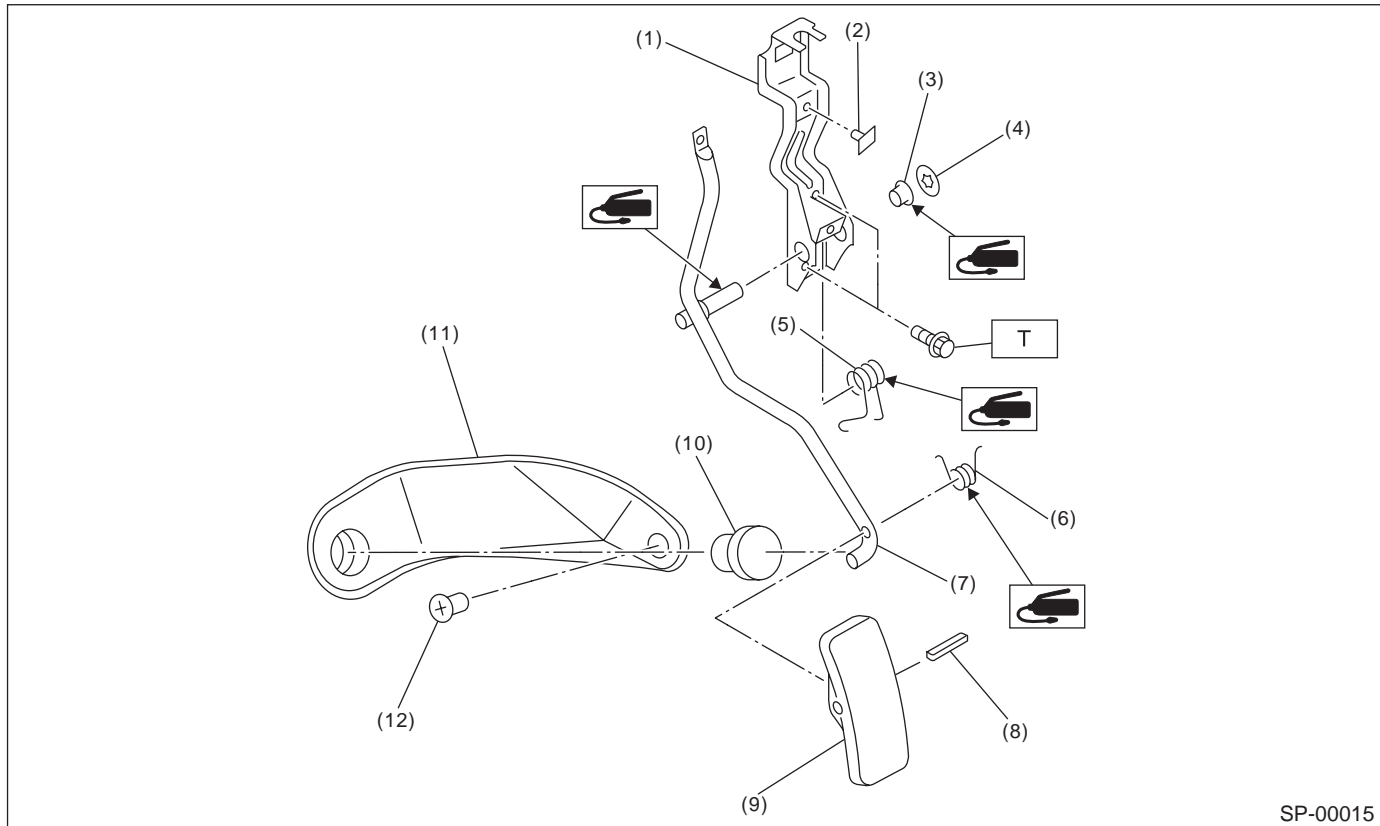
SPEED CONTROL SYSTEMS

1. General Description

A: SPECIFICATION

| | | | |
|-------------------|-----------|--------------|-----------------------------|
| Accelerator pedal | Free play | At pedal pad | 0 — 4 mm (0.04 — 0.16 in) |
| | Stroke | At pedal pad | 50 — 55 mm (1.97 — 2.17 in) |

B: COMPONENT



- | | | |
|-------------------------|------------------------------|------------------------|
| (1) Accelerator bracket | (6) Accelerator pedal spring | (11) Accelerator plate |
| (2) Stopper | (7) Accelerator pedal lever | (12) Clip |
| (3) Bushing | (8) Spring pin | |
| (4) Clip | (9) Accelerator pedal | |
| (5) Accelerator spring | (10) Accelerator stopper | |

Tightening torque: N·m (kgf·m, ft·lb)
T: 18 (1.8, 13.0)

C: CAUTION

- Wear work clothing, including a cap, protective goggles, and protective shoes during operation.
- Remove contamination, including dirt and corrosion, before removal, installation or disassembly.
- Keep the disassembled parts in order and protect them from dust and dirt.
- Before removal, installation or disassembly, be sure to clarify the failure. Avoid unnecessary removal, installation, disassembly, and replacement.
- Be careful not to burn your hands, because each part in the vehicle is hot after running.
- Be sure to tighten fasteners including bolts and nuts to the specified torque.

- Place shop jacks or safety stands at the specified points.
- Before disconnecting electrical connectors of sensors or units, be sure to disconnect ground cable from battery.