

GENERAL DESCRIPTION

FUEL INJECTION (FUEL SYSTEMS)

1. General Description

A: SPECIFICATIONS

Model		
Fuel tank	Capacity	64 ℓ (16.9 US gal, 14.1 Imp gal)
	Location	Under rear seat
Fuel pump	Type	Impeller
	Shutoff discharge pressure	370 — 677 kPa (3.77 — 6.9 kg/cm ² , 53.6 — 98 psi)
	Discharge flow	More than 85 ℓ (22.5 US gal, 18.7 Imp gal)/h [12 V at 300 kPa (3.06 kg/cm ² , 43.5 psi)]
Fuel filter		Cartridge type

FU(H6DO)-2

GENERAL DESCRIPTION

FUEL INJECTION (FUEL SYSTEMS)

MEMO:

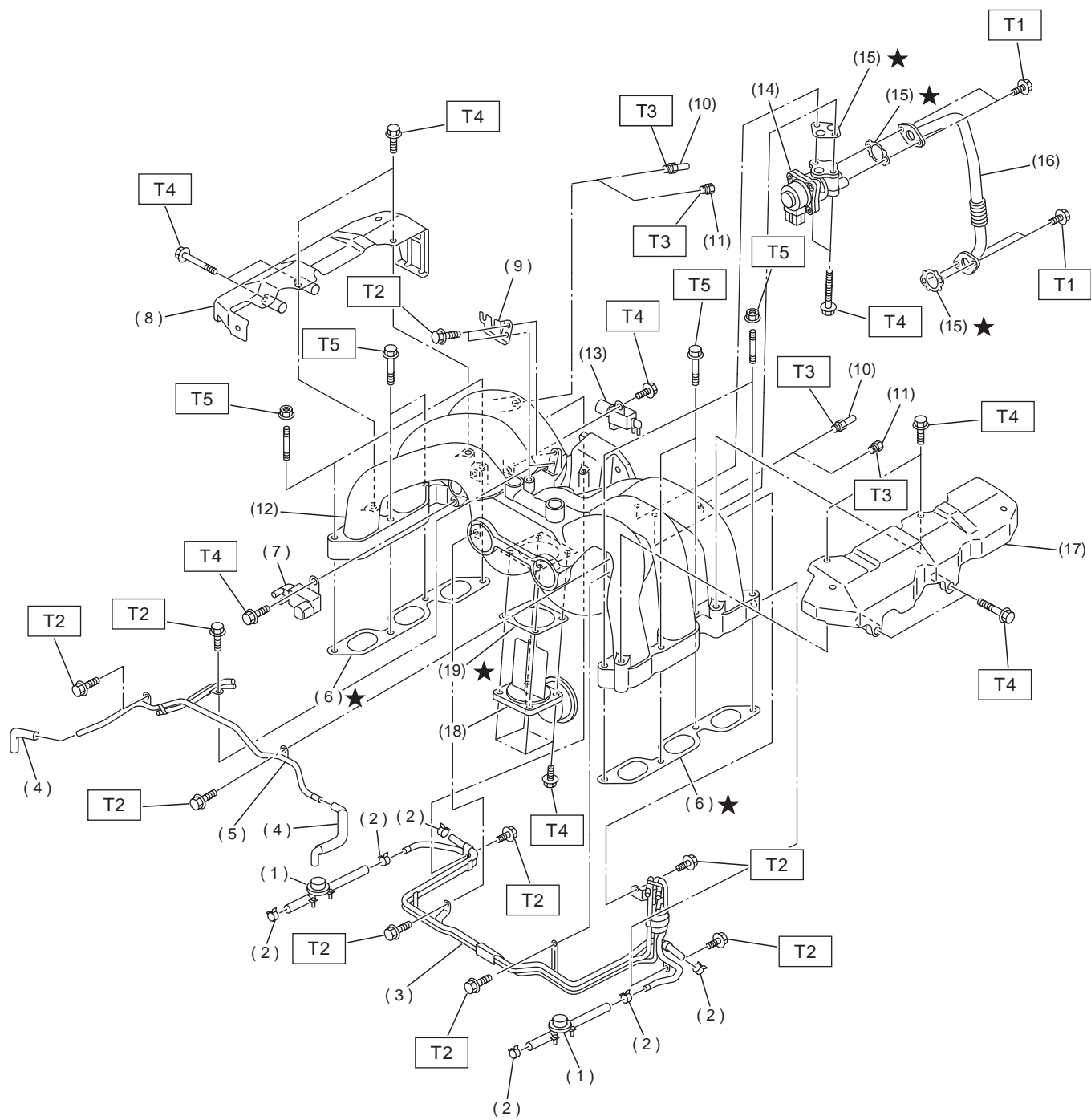
FU(H6DO)-3

GENERAL DESCRIPTION

FUEL INJECTION (FUEL SYSTEMS)

B: COMPONENT

1. INTAKE MANIFOLD



FU-00531

FU(H6DO)-4

GENERAL DESCRIPTION

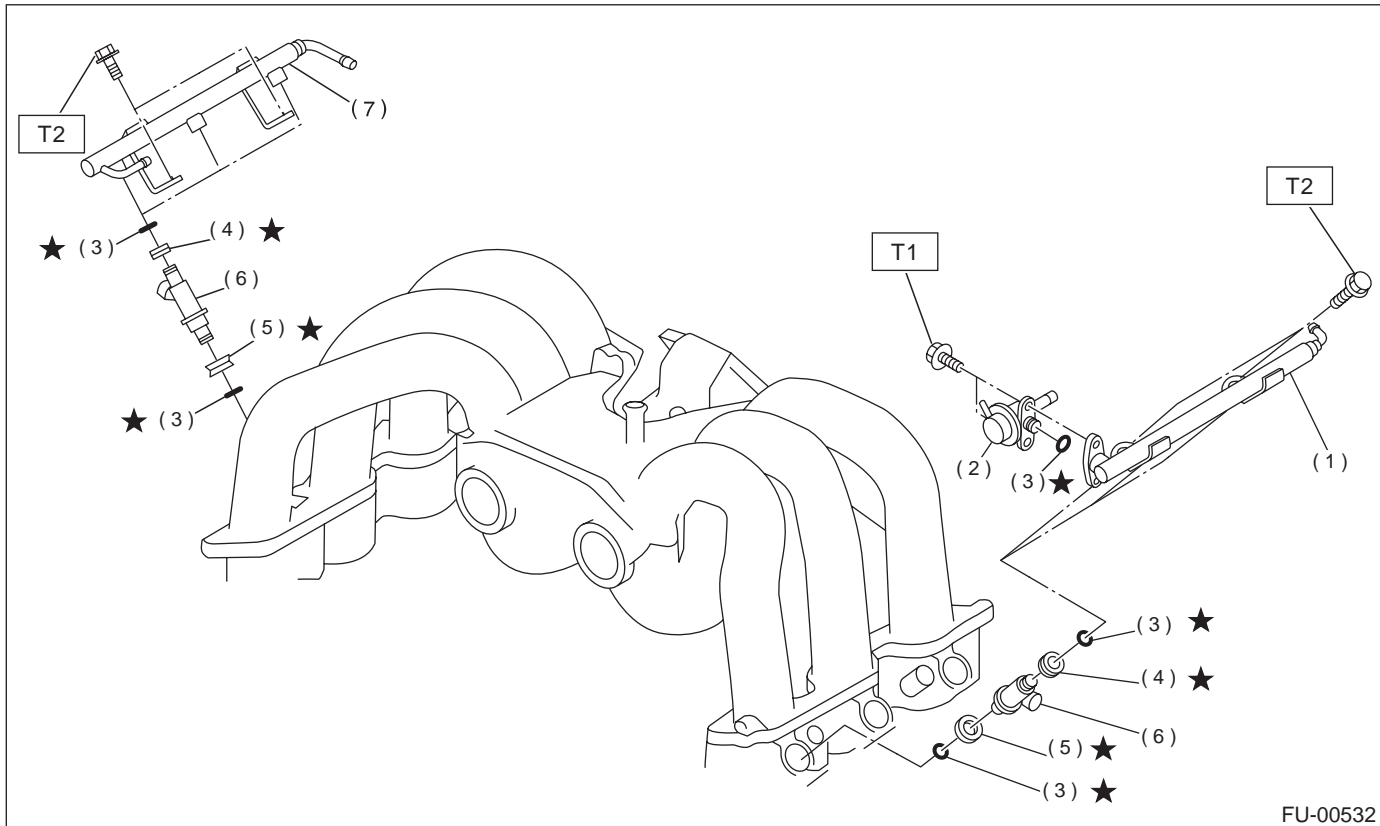
FUEL INJECTION (FUEL SYSTEMS)

(1) Fuel damper valve	(10) Nipple	(19) Gasket
(2) Clamp	(11) Plug	
(3) Fuel pipe ASSY	(12) Intake manifold	<i>Tightening torque: N·m (kgf-m, ft-lb)</i>
(4) Air assist hose	(13) Induction valve control solenoid	<i>T1: 6.4 (0.65, 4.7)</i>
(5) Air assist and purge pipe ASSY	(14) EGR valve	<i>T2: 5.0 (0.51, 3.7)</i>
(6) Gasket	(15) Gasket	<i>T3: 17 (1.7, 12)</i>
(7) Purge control solenoid valve	(16) EGR pipe	<i>T4: 19 (1.9, 14)</i>
(8) Fuel pipe protector RH	(17) Fuel pipe protector LH	<i>T5: 25 (2.5, 18)</i>
(9) Accelerator cable bracket	(18) Induction valve	

GENERAL DESCRIPTION

FUEL INJECTION (FUEL SYSTEMS)

2. FUEL INJECTOR



- | | |
|---------------------------|---------------------------|
| (1) Fuel injector pipe LH | (5) Insulator |
| (2) Pressure regulator | (6) Fuel injector |
| (3) O-ring | (7) Fuel injector pipe RH |
| (4) Injection rubber | |

Tightening torque: N·m (kgf-m, ft-lb)

T1: 6.4 (0.65, 4.7)

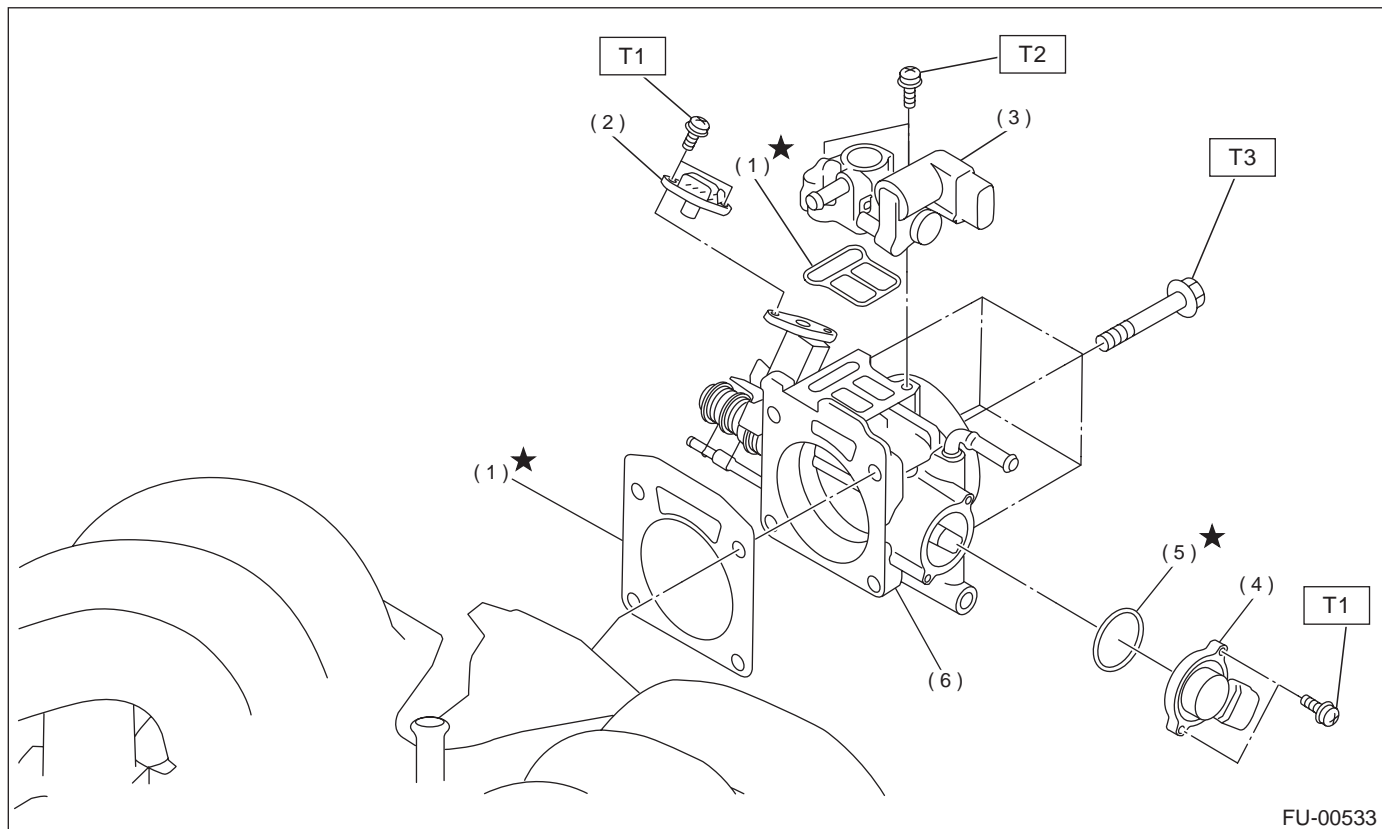
T2: 19 (1.9, 14)

FU(H6DO)-6

GENERAL DESCRIPTION

FUEL INJECTION (FUEL SYSTEMS)

3. AIR INTAKE SYSTEM



- | | |
|-------------------------------------|-------------------|
| (1) Gasket | (5) O-ring |
| (2) Intake manifold pressure sensor | (6) Throttle body |
| (3) Idle air control solenoid valve | |
| (4) Throttle position sensor | |

Tightening torque: N·m (kgf-m, ft-lb)

T1: 1.6 (0.16, 1.2)

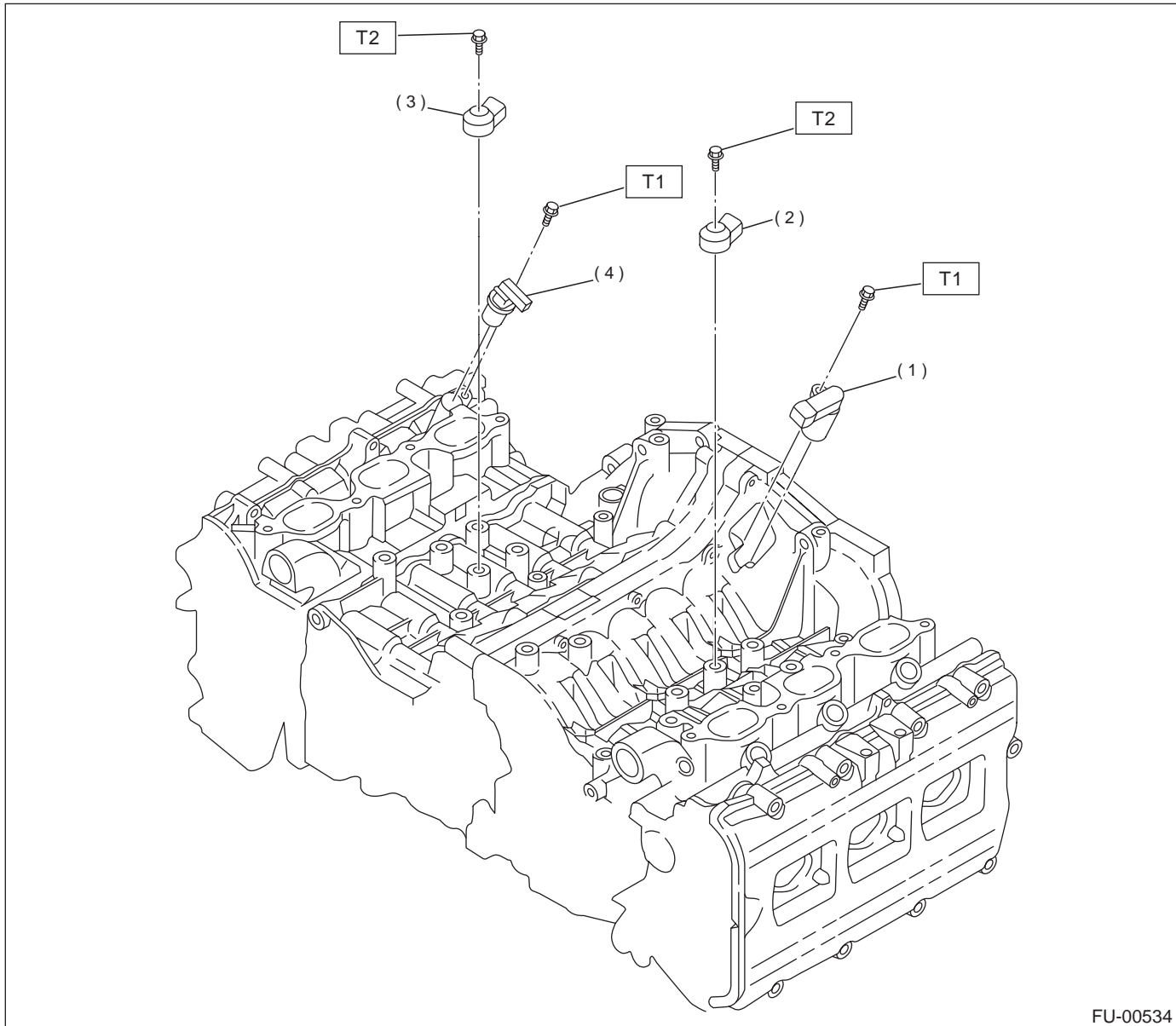
T2: 2.8 (0.29, 2.1)

T3: 22 (2.2, 15.9)

GENERAL DESCRIPTION

FUEL INJECTION (FUEL SYSTEMS)

4. CRANKSHAFT POSITION, CAMSHAFT POSITION AND KNOCK SENSORS



- (1) Crankshaft position sensor
- (2) Knock sensor LH

- (3) Knock sensor RH
- (4) Camshaft position sensor

Tightening torque: N·m (kgf-m, ft-lb)

T1: 6.4 (0.65, 4.7)

T2: 25 (2.5, 18)

FU(H6DO)-8

GENERAL DESCRIPTION

FUEL INJECTION (FUEL SYSTEMS)

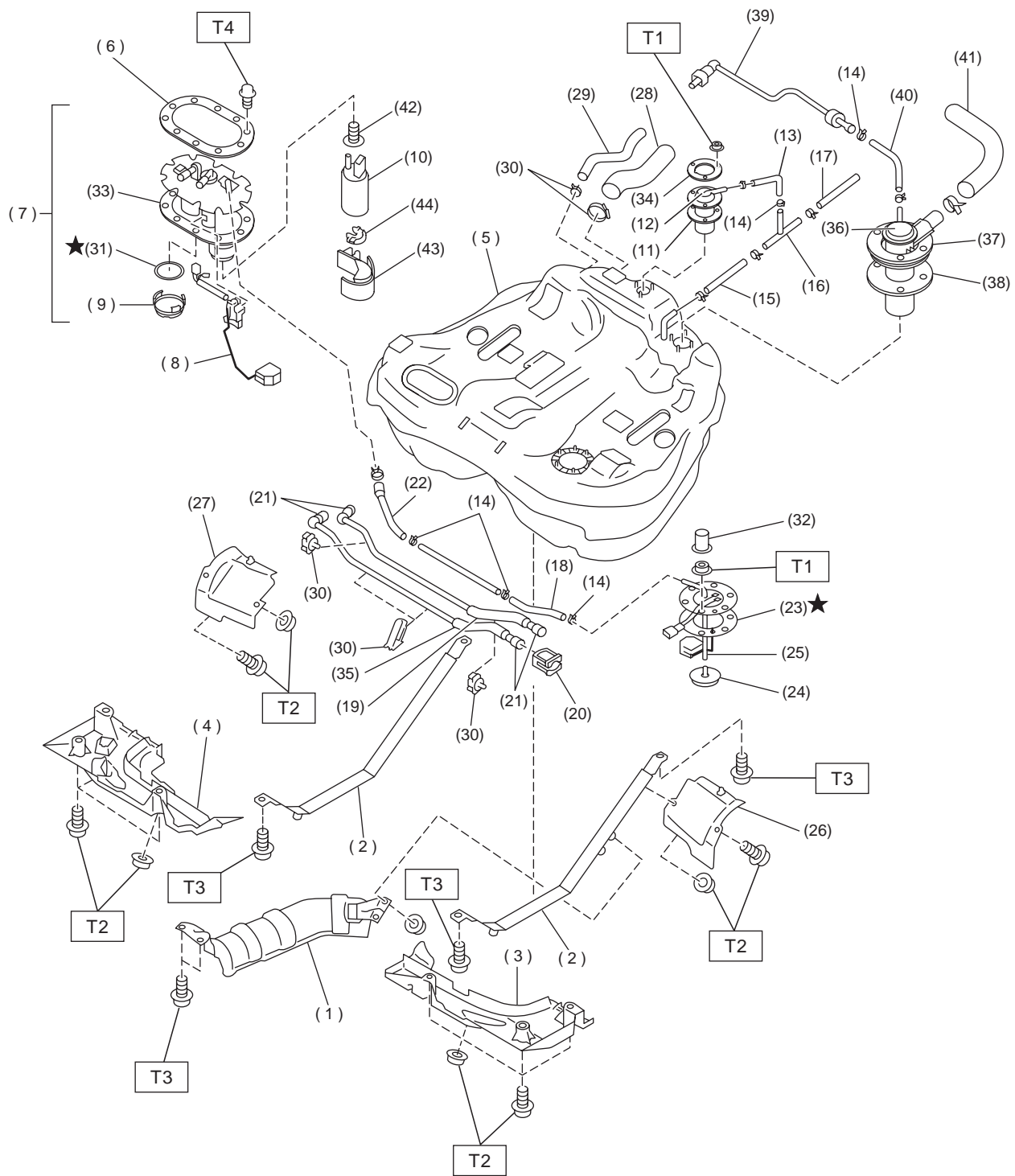
MEMO:

FU(H6DO)-9

GENERAL DESCRIPTION

FUEL INJECTION (FUEL SYSTEMS)

5. FUEL TANK



FU-00424

FU(H6DO)-10

GENERAL DESCRIPTION

FUEL INJECTION (FUEL SYSTEMS)

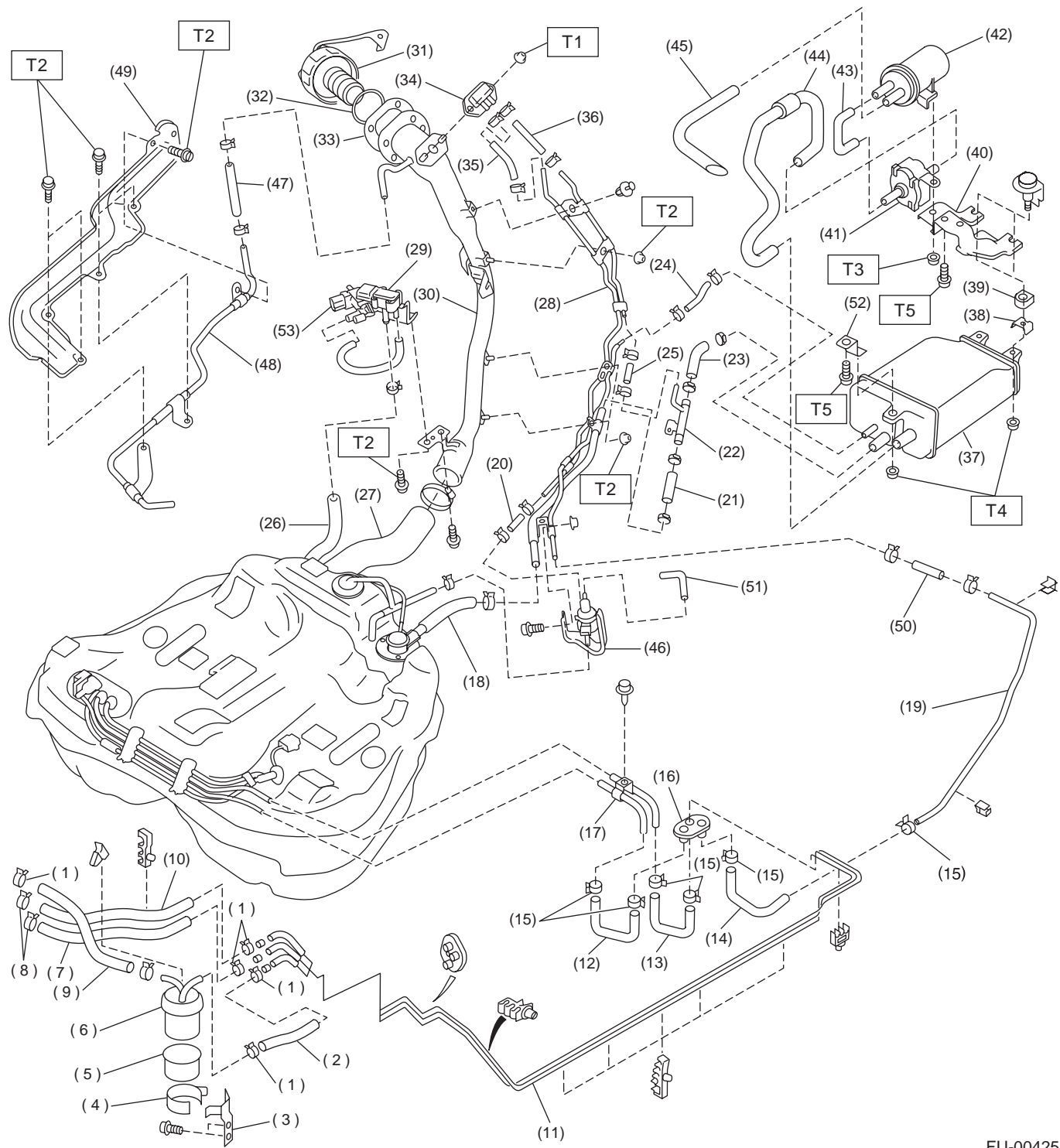
(1) Heat sealed cover	(18) Jet pump hose A	(35) Fuel delivery tube
(2) Fuel tank band	(19) Fuel return tube	(36) Vent valve
(3) Protector LH (Front)	(20) Retainer	(37) Vent valve plate
(4) Protector RH (Front)	(21) Quick connector	(38) Vent valve gasket
(5) Fuel tank	(22) Jet pump hose B	(39) Evaporation tube
(6) Fuel pump plate	(23) Fuel sub level sensor gasket	(40) Evaporation hose D
(7) Fuel pump ASSY	(24) Jet pump filter	(41) Air vent hose
(8) Fuel level sensor	(25) Fuel sub level sensor	(42) Seal
(9) Cap	(26) Protector LH (Rear)	(43) Fuel pump holder
(10) Fuel pump	(27) Protector RH (Rear)	(44) Rubber lower
(11) Fuel cut valve gasket	(28) Fuel filler hose	
(12) Fuel cut valve	(29) Fuel tank pressure sensor hose	
(13) Evaporation hose A	(30) Clamp	
(14) Clip	(31) Gasket	
(15) Evaporation hose C	(32) Cap	
(16) Joint pipe	(33) Gasket	
(17) Evaporation hose B	(34) Fuel cut valve plate	

Tightening torque: N·m (kgf-m, ft-lb)**T1: 4.4 (0.45, 3.3)****T2: 18 (1.8, 13.0)****T3: 33 (3.4, 25)****T4: 5.9 (0.6, 4.3)**

GENERAL DESCRIPTION

FUEL INJECTION (FUEL SYSTEMS)

6. FUEL LINE



FU-00425

FU(H6DO)-12

GENERAL DESCRIPTION

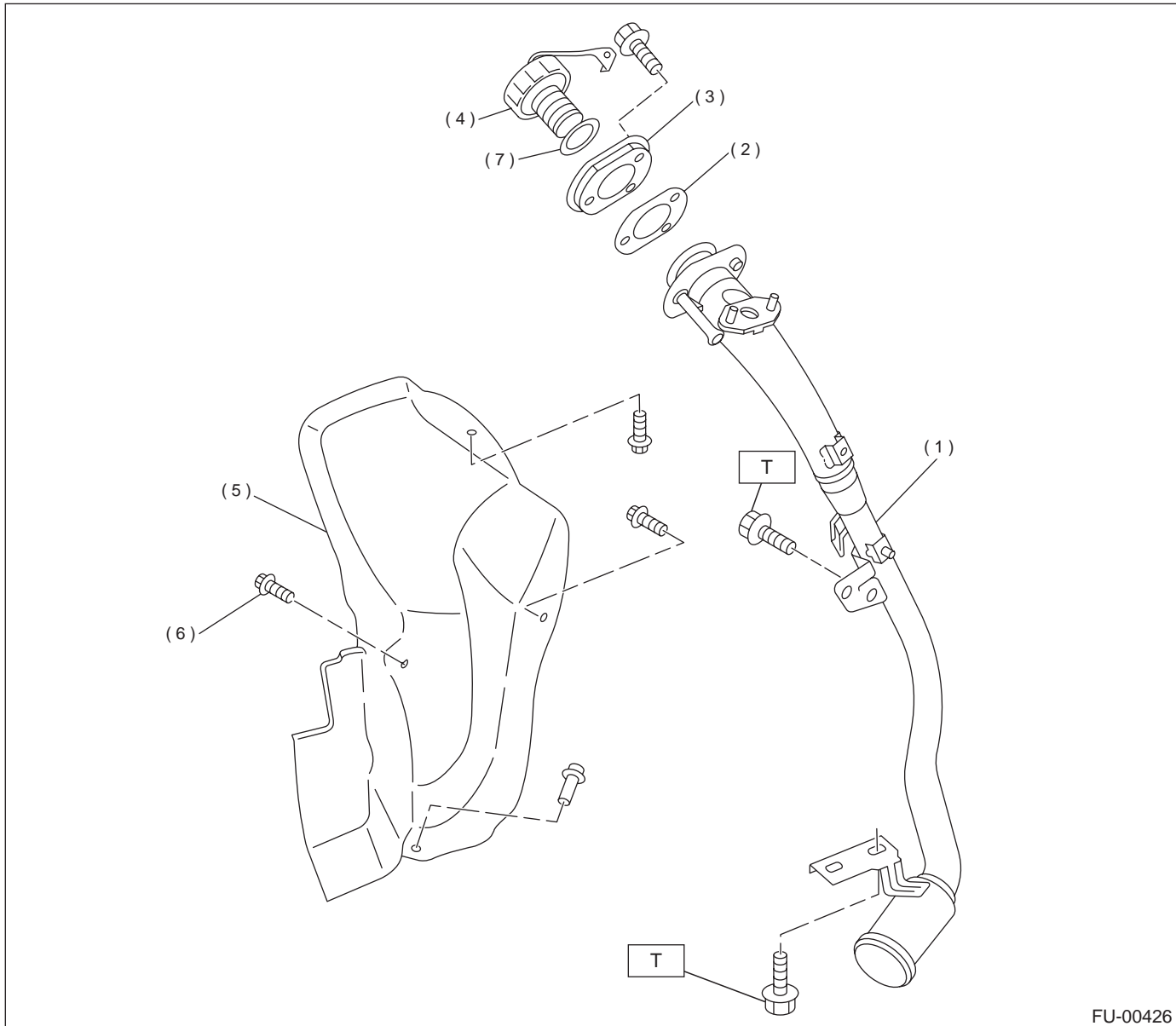
FUEL INJECTION (FUEL SYSTEMS)

(1) Clamp	(23) Evaporation hose J	(45) Drain filter hose B
(2) Fuel delivery hose A	(24) Evaporation hose K	(46) Pressure control solenoid valve
(3) Fuel filter bracket	(25) Evaporation hose L	(47) Evaporation hose O
(4) Fuel filter holder	(26) Fuel tank pressure sensor hose	(48) Evaporation pipe C
(5) Fuel filter cup	(27) Fuel filler hose	(49) Pipe protector
(6) Fuel filter	(28) Evaporation pipe B	(50) Evaporation hose P
(7) Evaporation hose F	(29) Fuel tank pressure sensor	(51) Pressure control solenoid valve hose
(8) Clip	(30) Fuel filler pipe	(52) Canister front bracket
(9) Fuel delivery hose B	(31) Fuel filler cap	(53) Fuel tank sensor control valve
(10) Fuel return hose	(32) Ring	
(11) Fuel pipe ASSY	(33) Packing	
(12) Fuel delivery hose C	(34) Shut valve	Tightening torque: N·m (kgf-m, ft-lb)
(13) Fuel return hose C	(35) Evaporation hose M	T1: 4.5 (0.46, 3.3)
(14) Evaporation hose G	(36) Evaporation hose N	T2: 7.5 (0.76, 5.5)
(15) Clamp	(37) Canister	T3: 18 (1.8, 13.0)
(16) Grommet	(38) Canister lower bracket	T4: 23 (2.3, 16.6)
(17) Fuel pipe ASSY	(39) Cushion rubber	T5: 33 (3.4, 25)
(18) Air vent hose A	(40) Canister upper bracket	
(19) Evaporation hose H	(41) Drain valve	
(20) Evaporation hose I	(42) Drain filter	
(21) Air vent hose B	(43) Drain filter hose A	
(22) Air vent pipe	(44) Drain valve hose	

GENERAL DESCRIPTION

FUEL INJECTION (FUEL SYSTEMS)

7. FUEL FILLER PIPE



- (1) Fuel filler pipe ASSY
- (2) Filler pipe packing
- (3) Filler ring
- (4) Filler cap

- (5) Filler pipe protector
- (6) Clip
- (7) Ring

Tightening torque: N·m (kgf-m, ft-lb)

T: 7.5 (0.75, 5.4)

FU(H6DO)-14

GENERAL DESCRIPTION

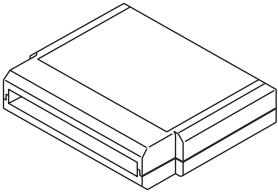

FUEL INJECTION (FUEL SYSTEMS)

C: CAUTION

- Wear working clothing, including a cap, protective goggles, and protective shoes during operation.
- Remove contamination including dirt and corrosion before removal, installation or disassembly.
- Keep the disassembled parts in order and protect them from dust or dirt.
- Before removal, installation or disassembly, be sure to clarify the failure. Avoid unnecessary removal, installation, disassembly, and replacement.

- Be careful not to burn your hands, because each part on the vehicle is hot after running.
- Be sure to tighten fasteners including bolts and nuts to the specified torque.
- Place shop jacks or safety stands at the specified points.
- Before disconnecting electrical connectors of sensors or units, be sure to disconnect ground cable from battery.
- Place "NO FIRE" signs near the working area.
- Be careful not to spill fuel on the floor.

D: PREPARATION TOOL

ILLUSTRATION	TOOL NUMBER	DESCRIPTION	REMARKS
 ST24082AA210	24082AA210 (Newly adopted tool)	CARTRIDGE	Troubleshooting for electrical systems.
 ST22771AA030	22771AA030	SELECT MONITOR KIT	Troubleshooting for electrical systems. <ul style="list-style-type: none"> • English: 22771AA030 (Without printer) • German: 22771AA070 (Without printer) • French: 22771AA080 (Without printer) • Spanish: 22771AA090 (Without printer)