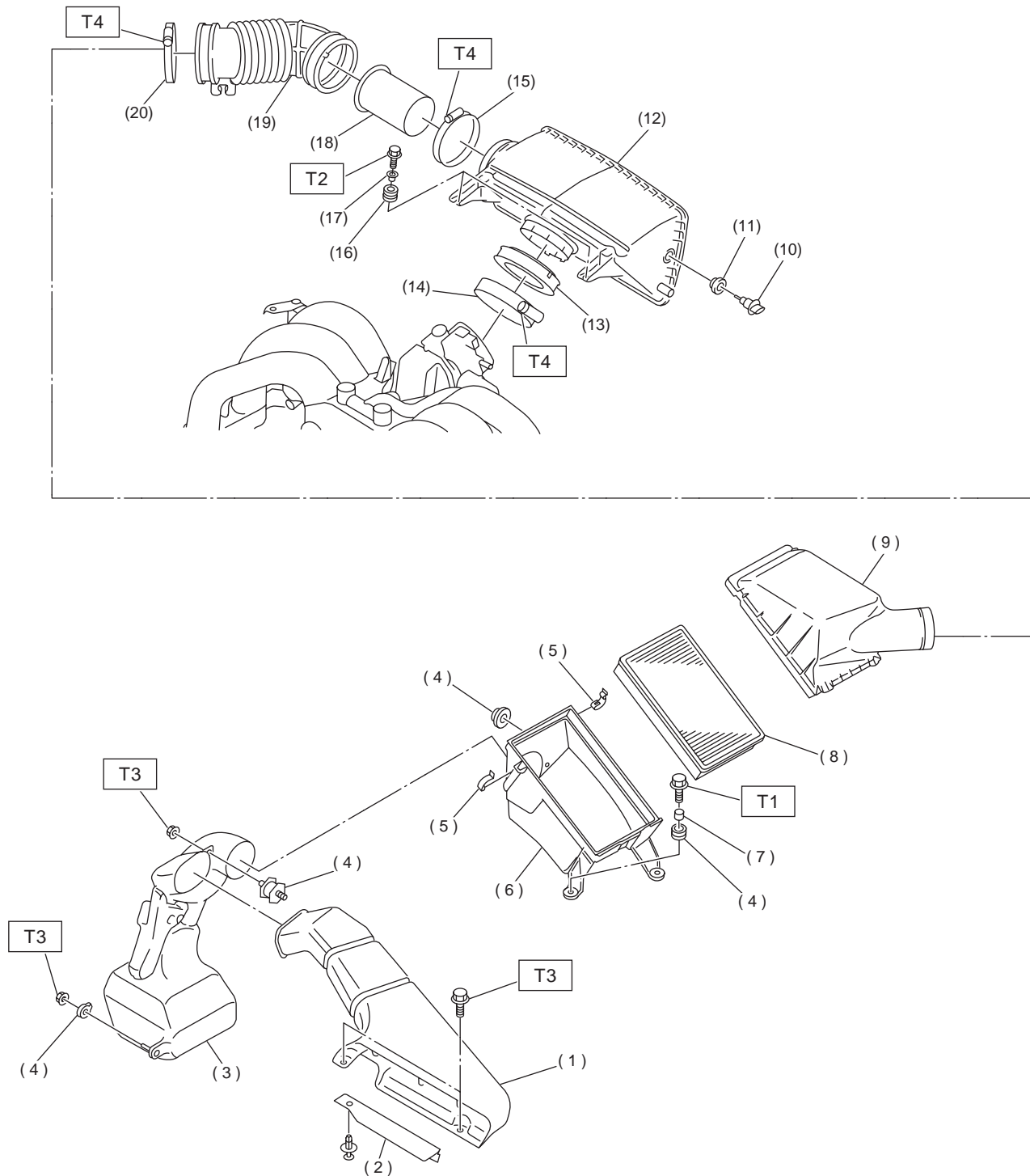


## GENERAL DESCRIPTION

INTAKE (INDUCTION)

### 1. General Description

#### A: COMPONENT



IN-00064

IN(H6DO)-2

## GENERAL DESCRIPTION

INTAKE (INDUCTION)

---

(1) Air intake duct	(10) Intake air temperature sensor	(19) Air intake boot
(2) Plate	(11) Grommet	(20) Clamp
(3) Resonator chamber	(12) Air intake chamber	
(4) Cushion	(13) Grommet	
(5) Clip	(14) Clamp	
(6) Air cleaner lower case	(15) Clamp	
(7) Spacer	(16) Cushion	
(8) Air cleaner element	(17) Spacer	
(9) Air cleaner upper cover	(18) Intake duct	

---

**Tightening torque: N·m (kgf-m, ft-lb)**

**T1: 32.3 (3.3, 23.9)**

**T2: 6.4 (0.65, 4.7)**

**T3: 7.5 (0.76, 5.5)**

---

**T4: 3 (0.3, 2.2)**

## GENERAL DESCRIPTION

INTAKE (INDUCTION)

---

### **B: CAUTION**

- Wear working clothing, including a cap, protective goggles, and protective shoes during operation.
- Remove contamination including dirt and corrosion before removal, installation or disassembly.
- Keep the disassembled parts in order and protect them from dust or dirt.
- Before removal, installation or disassembly, be sure to clarify the failure. Avoid unnecessary removal, installation, disassembly, and replacement.
- Be careful not to burn your hands, because each part on the vehicle is hot after running.
- Be sure to tighten fasteners including bolts and nuts to the specified torque.
- Place shop jacks or safety stands at the specified points.
- Before disconnecting electrical connectors of sensor or units, be sure to disconnect ground cable from battery.