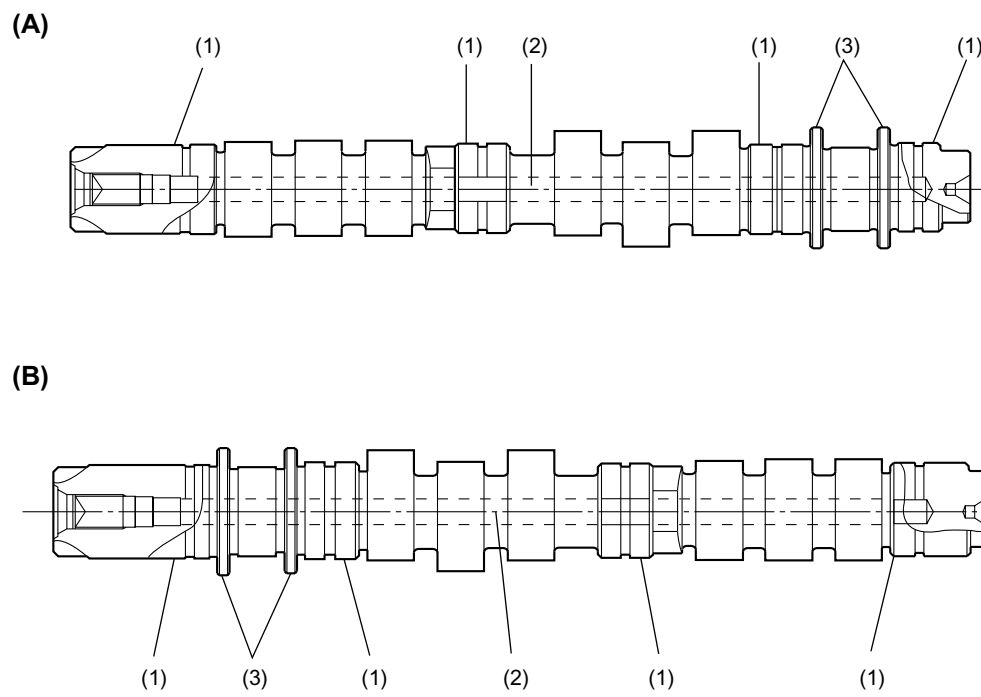


CAMSHAFT

Mechanical

6. Camshaft

- The camshaft is supported inside the cylinder head at four journals.
- The two flanges on each camshaft supports thrust forces to limit the end play of the camshaft within the tolerance.
- Each camshaft has an oil passage in it.



(A) RH
(B) LH

(1) Journal
(2) Oil passage
(3) Shaft flange