

## SEAT BELT

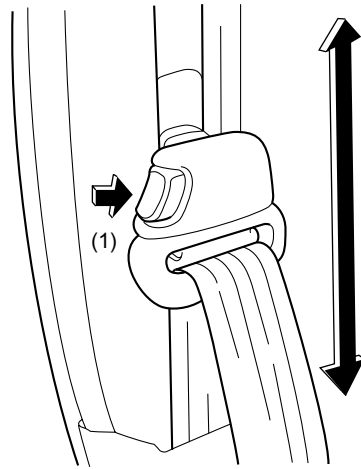
Seat Belt System

---

### 1. Seat Belt

#### A: ADJUSTABLE SHOULDER BELT ANCHOR

Each front seat belt system has an adjustable shoulder belt anchor which allows the occupant to select the most appropriate anchor height from among the five positions in a 100 mm (3.94 in) range.



SB-00029

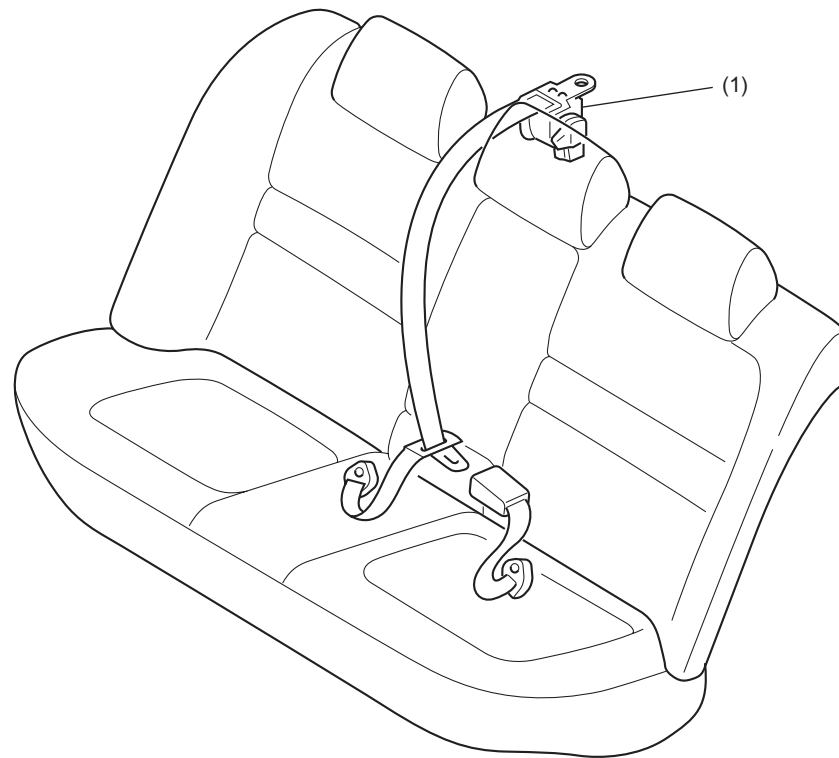
(1) Push

## SEAT BELT

Seat Belt System

### **B: REAR CENTER THREE-POINT TYPE SEAT BELT (SEDAN)**

A three-point type seat belt is available for the center seating position of the rear seat. The retractor for the seat belt is installed on the luggage shelf behind the seating position.

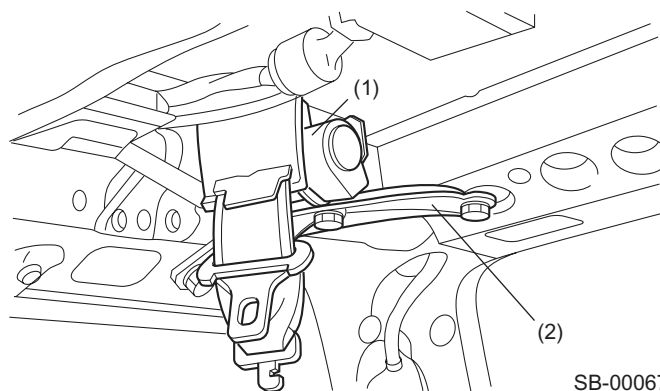


SB-00066

(1) Retractor

### **C: REAR CENTER THREE-POINT TYPE SEAT BELT (WAGON)**

A three-point type seat belt is available for the center seating position of the rear seat. The retractor for the seat belt is installed on the ceiling at the rear right of the cabin.



SB-00067

(1) Retractor  
(2) Bracket

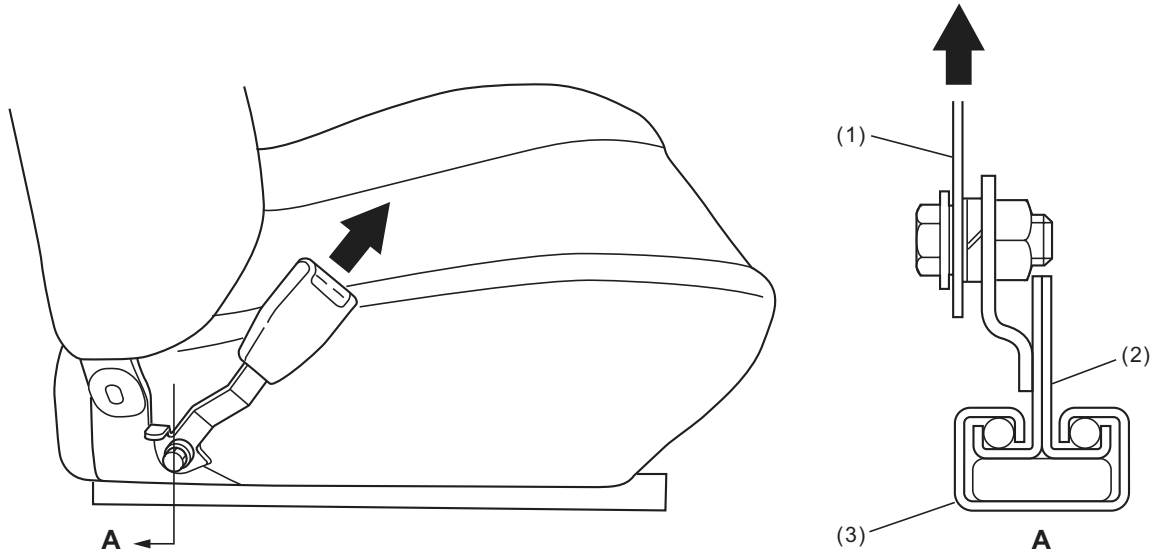
## SEAT BELT

Seat Belt System

---

### D: SEAT ANCHORED INNER BELT

The front inner belt (buckle stalk) is attached to the front seat rather than to the floor. This keeps the position of the occupant relative to the front inner belt always constant even when the front seat is moved for adjustment.



SB-00068

- (1) Inner belt
- (2) Upper hook
- (3) Lower hook

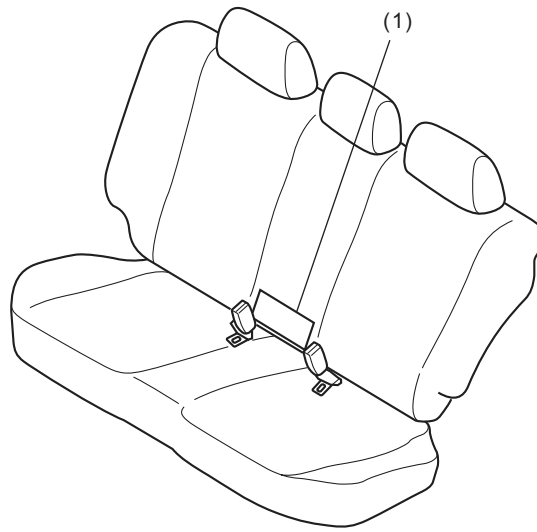
## SEAT BELT

Seat Belt System

---

### E: INNER BELT BUCKLE (WAGON)

The rear inner belt buckles can be stowed in the belt pocket located at the lower part of the center seat.



SB-00069

(1) Belt pocket

## SEAT BELT

Seat Belt System

---

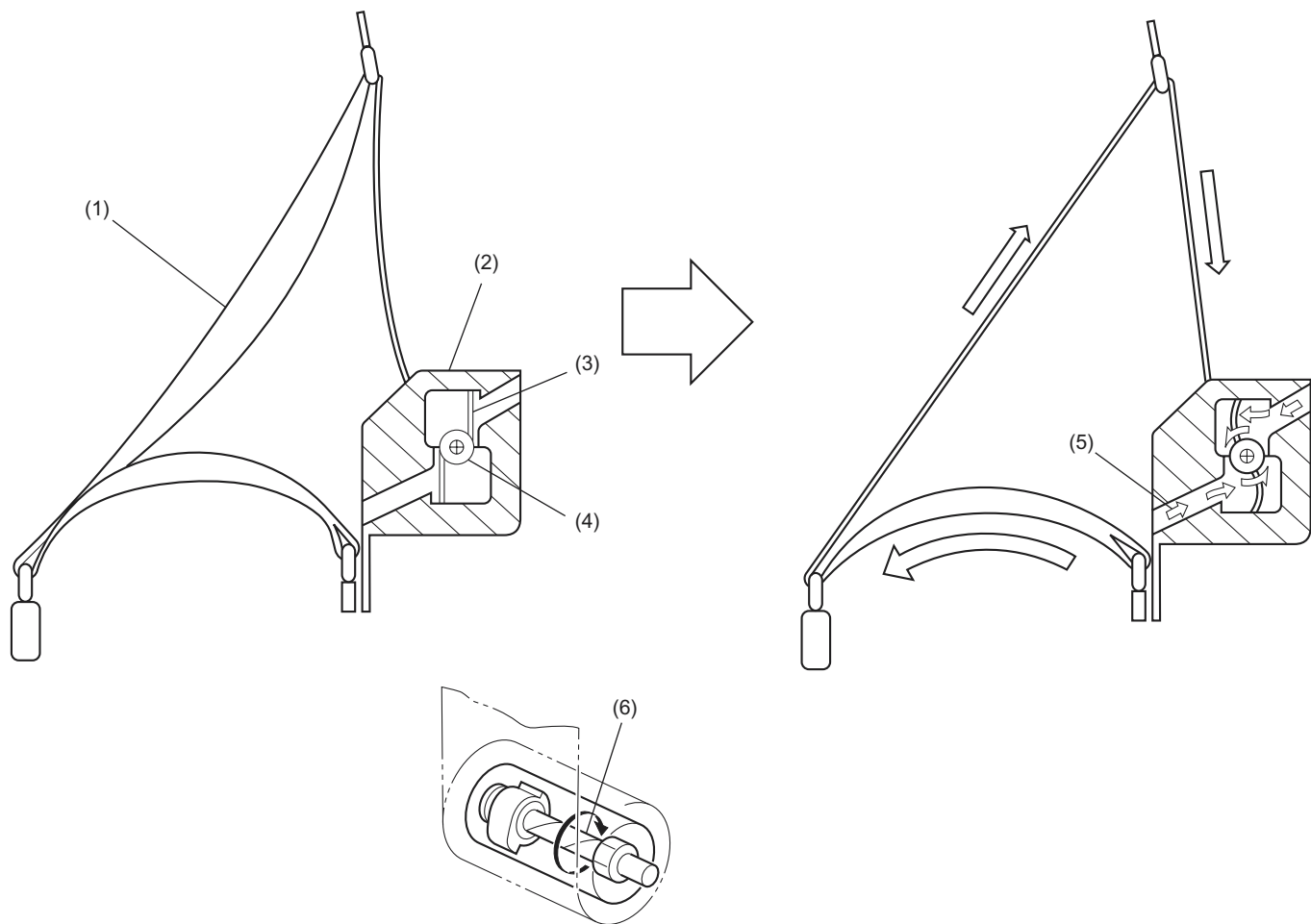
### **F: PRETENSIONER**

#### **1. CONSTRUCTION**

The driver's and front passenger's seat belts are equipped with seat belt pretensioners. The pretensioners use the front sub sensors and the airbag control module inside sensors to control their operation. If the sensors detect an impact exceeding the predetermined level during a frontal or front-angled collision, the front seat belts are quickly rewound by the retractors to take up slacks for maximum restraining of the seat occupants. If the load placed on a seat belt exceeds the predetermined level, the torsion bar twists to allow the belt to be pulled out, thus lessening the load imposed on the belt wearer's chest. Once the seat belt pretensioner has been activated, the seat belt retractor remains locked.

# SEAT BELT

Seat Belt System



- (1) Webbing
- (2) Retractor
- (3) Strip
- (4) Shaft
- (5) Gas
- (6) Torsion bar

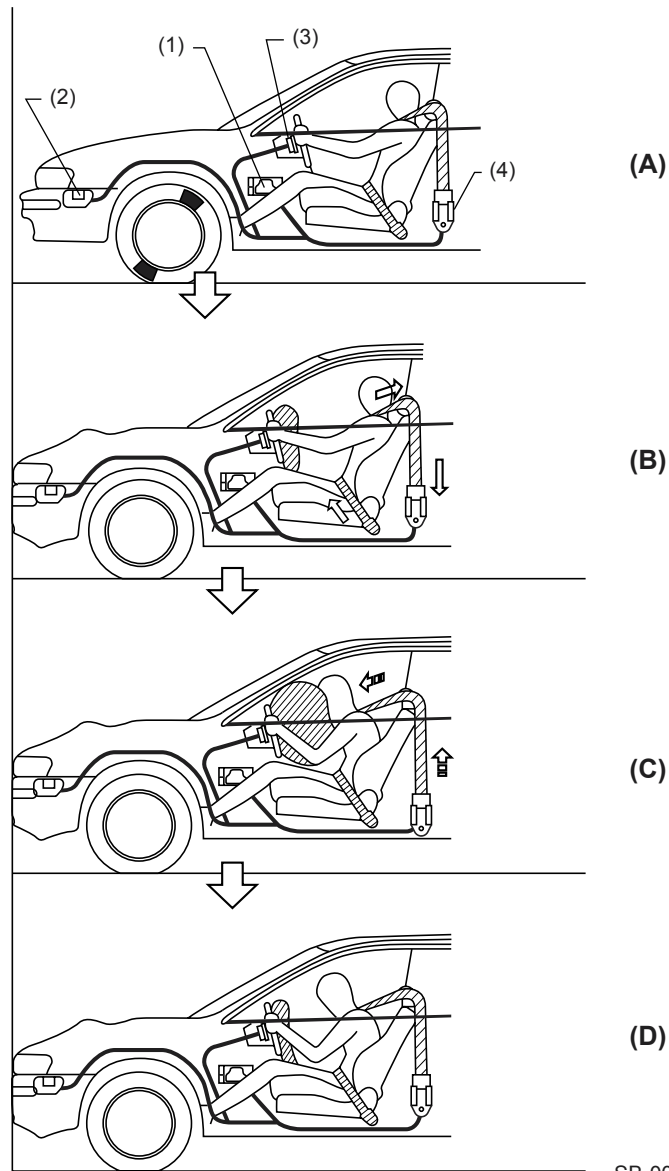
SB-00070

**SB-7**

# SEAT BELT

Seat Belt System

## 2. FUNCTION



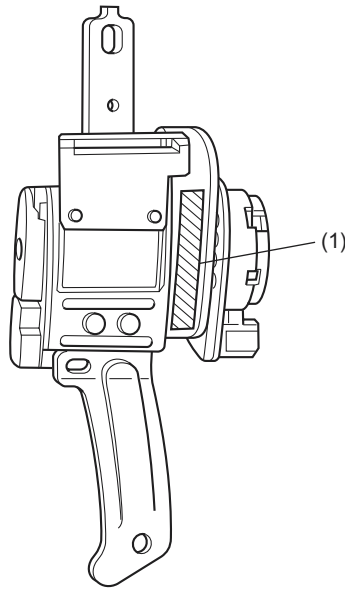
- (A) • Collision occurs
  - (B) • Front sub sensor, electric sensor and safety sensor detect an impact greater than the set level
    - Operation of pretensioner
    - Airbag starts to inflate
  - (C) • Load limiter operates
  - (D) • Operation complete
- (1) Safety sensor and electric sensor  
(2) Front sub sensor  
(3) Airbag  
(4) Retractor with pretensioner

# SEAT BELT

Seat Belt System

---

## 3. LOCATIONS OF WARNING AND CAUTION LABELS



SB-00071

(1) Caution label



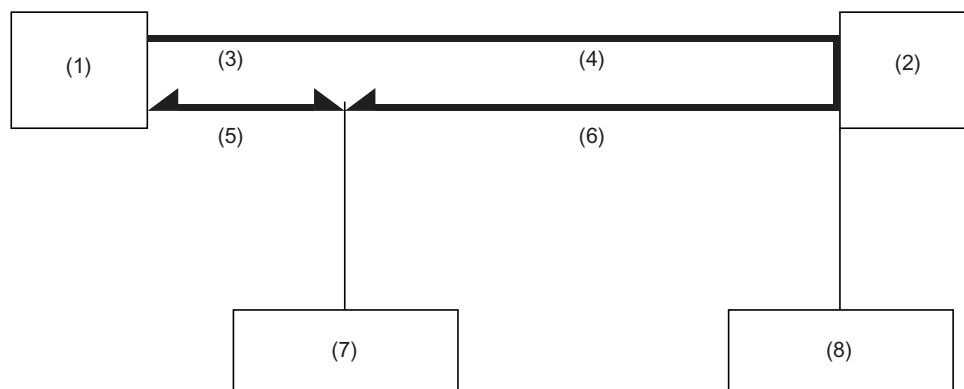
## SEAT BELT

Seat Belt System

---

### G: AUTOMATIC RETRACTOR

When each of the rear seat belts (for right, left and center seating positions) are drawn out completely, its retractor is placed in the automatic locking mode which is used when installing a child restraint system. In this mode, the belt can be retracted but cannot be extended. When the belt is retracted to a certain length, this mode is cancelled and normal operation is restored.



SB-00032

- (1) Fully retracted
- (2) Fully extended
- (3) Normal mode
- (4) Auto lock mode
- (5) Belt can be retracted and pulled out.
- (6) Belt can be retracted but cannot be extended.
- (7) Automatic locking mode to normal mode changeover
- (8) Normal locking mode to automatic locking mode changeover