

## IGNITION SWITCH

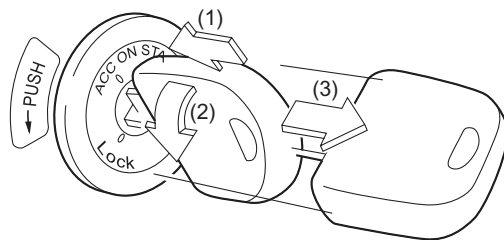
Security and Locks

### 1. Ignition Switch

#### A: GENERAL

##### 1. IGNITION SWITCH

- The ignition switches on the MT models have a safety mechanism that prevents inadvertent locking of the steering wheel during driving. The driver cannot turn the ignition key from “ACC” to “LOCK” unless the key is pushed inward at the “ACC” position (arrow 1 in the drawing below).

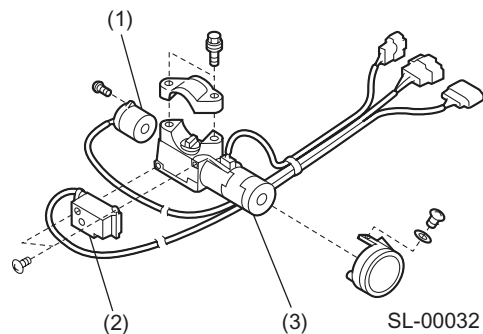


SL-00031

- The ignition switches on the AT models have a key interlock mechanism to avoid locking of the steering wheel during driving. The ignition key can be turned to the “LOCK” position only when the select lever is in the P position.

#### NOTE:

Should the key be impossible to turn to “LOCK” when the select lever is in the P position due to failure of the key interlock mechanism, the interlocking can be cancelled by operating the release lever located on the underside of the steering column.



- (1) Ignition switch
- (2) Key interlock solenoid (AT)
- (3) Ignition key cylinder

##### 2. KEY REMINDER CHIME

The reminder chime sounds when the driver’s door opens and the ignition key is in the “LOCK” or “ACC” position. The chime stops when the key is removed from the ignition switch.

##### 3. IGNITION SWITCH ILLUMINATION

The ignition switch illumination turns off 10 seconds after the driver’s door is closed. Also, when the key is inserted into the ignition switch while the illumination is on, it turns off immediately. An integrated module controls the off delay function.