

GENERAL DESCRIPTION

CONTROL SYSTEMS

1. General Description

A: SPECIFICATIONS

Item	Specification
Swing torque of rod against MT gear shift lever N (kgf, lb)	3.7 (0.38, 0.84) or less

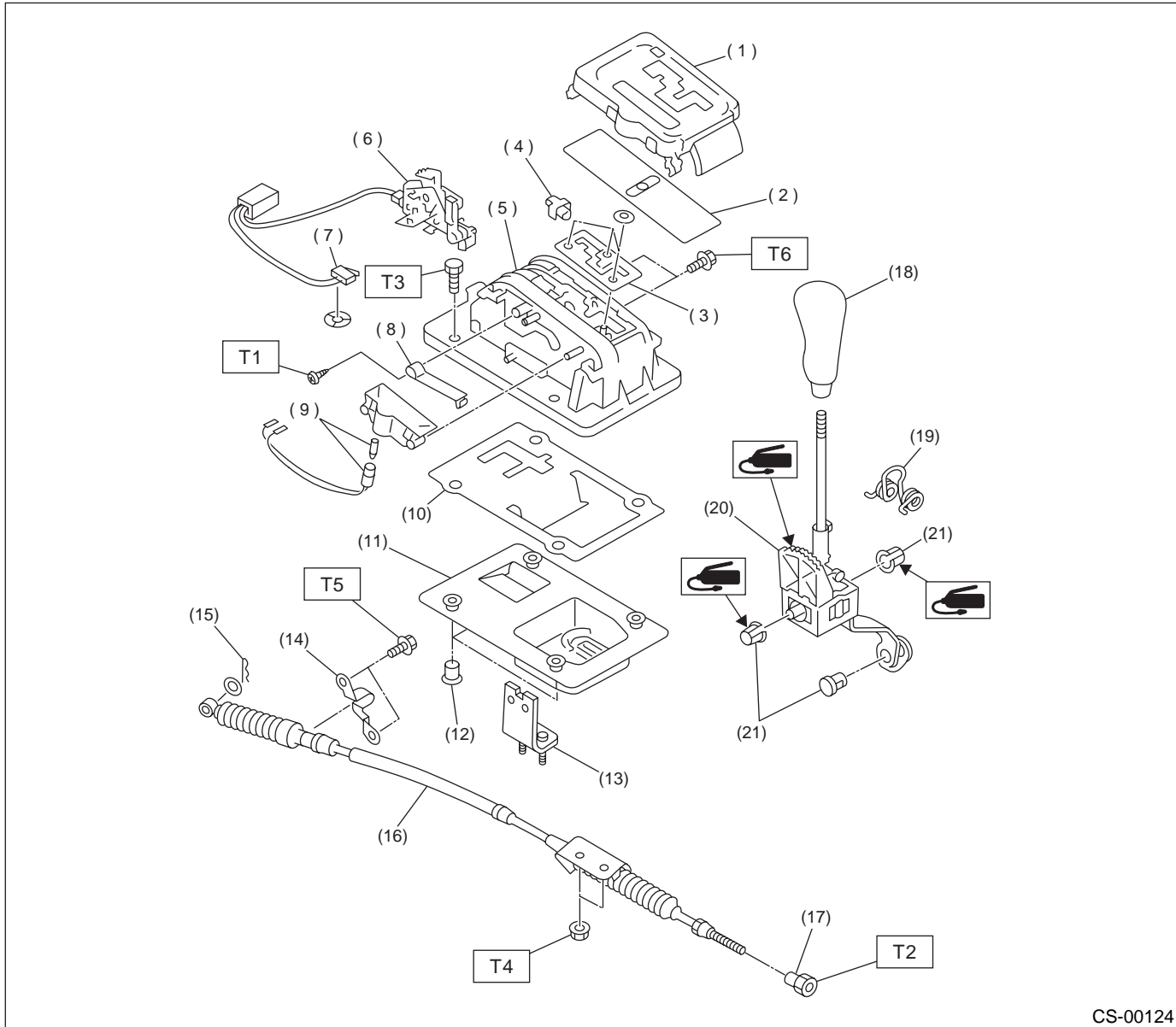
CS-2

GENERAL DESCRIPTION

CONTROL SYSTEMS

B: COMPONENT

1. AT SELECT LEVER (EXCEPT SPORT SHIFT MODEL)



CS-00124

- | | | |
|-------------------------|------------------------|--------------|
| (1) Indicator cover | (11) Rubber boot | (21) Bushing |
| (2) Slider | (12) Washer | |
| (3) Pattern plate | (13) Cable bracket | |
| (4) Stopper | (14) Cable clamp | |
| (5) Frame | (15) Snap pin | |
| (6) Solenoid ASSY | (16) Outer cable | |
| (7) "P" position switch | (17) Nut | |
| (8) Detent spring | (18) Grip | |
| (9) Illumination bulb | (19) Spring | |
| (10) Plate | (20) Select lever ASSY | |

Tightening torque: N·m (kgf-m, ft-lb)

T1: 4.9 (0.50, 3.6)

T2: 7.5 (0.76, 5.5)

T3: 13 (1.3, 9.4)

T4: 18 (1.8, 13.0)

T5: 33 (3.4, 25)

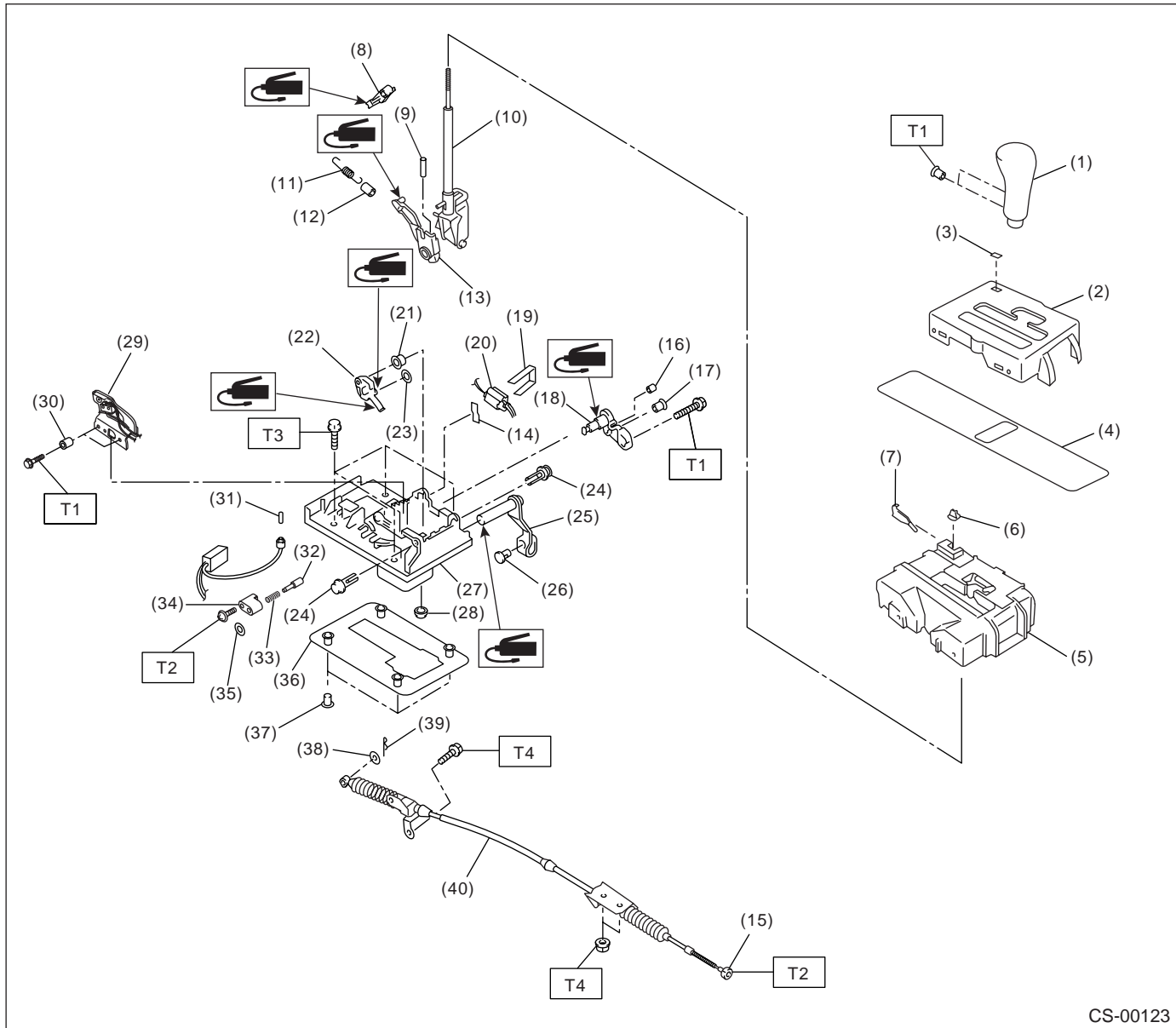
T6: 51 (5.2, 38)

CS-3

GENERAL DESCRIPTION

CONTROL SYSTEMS

2. AT SELECT LEVER (SPORT SHIFT MODEL)



- | | | |
|--------------------|--------------------------|-------------------|
| (1) Grip | (16) Bushing | (31) Bulb |
| (2) Cover | (17) Bushing | (32) Rod |
| (3) Cover | (18) Lock plate B | (33) Spring |
| (4) Blind | (19) Clamp | (34) Bushing |
| (5) Guide plate | (20) Shift lock solenoid | (35) Clip |
| (6) Button | (21) Bushing | (36) Packing |
| (7) Spring | (22) Lock plate A | (37) Spacer |
| (8) Detent arm | (23) Spacer | (38) Washer |
| (9) Spring pin | (24) Clip | (39) Snap pin |
| (10) Lever | (25) Arm | (40) Select cable |
| (11) Detent spring | (26) Bushing COMPL | |
| (12) Tube | (27) Base plate | |
| (13) Arm bracket | (28) Grommet | |
| (14) Cushion | (29) Bracket guide COMPL | |
| (15) Nut A | (30) Spacer | |

Tightening torque: N·m (kgf·m, ft·lb)

T1: 2.0 (0.2, 1.4)

T2: 7.5 (0.76, 5.5)

T3: 13 (1.3, 9.4)

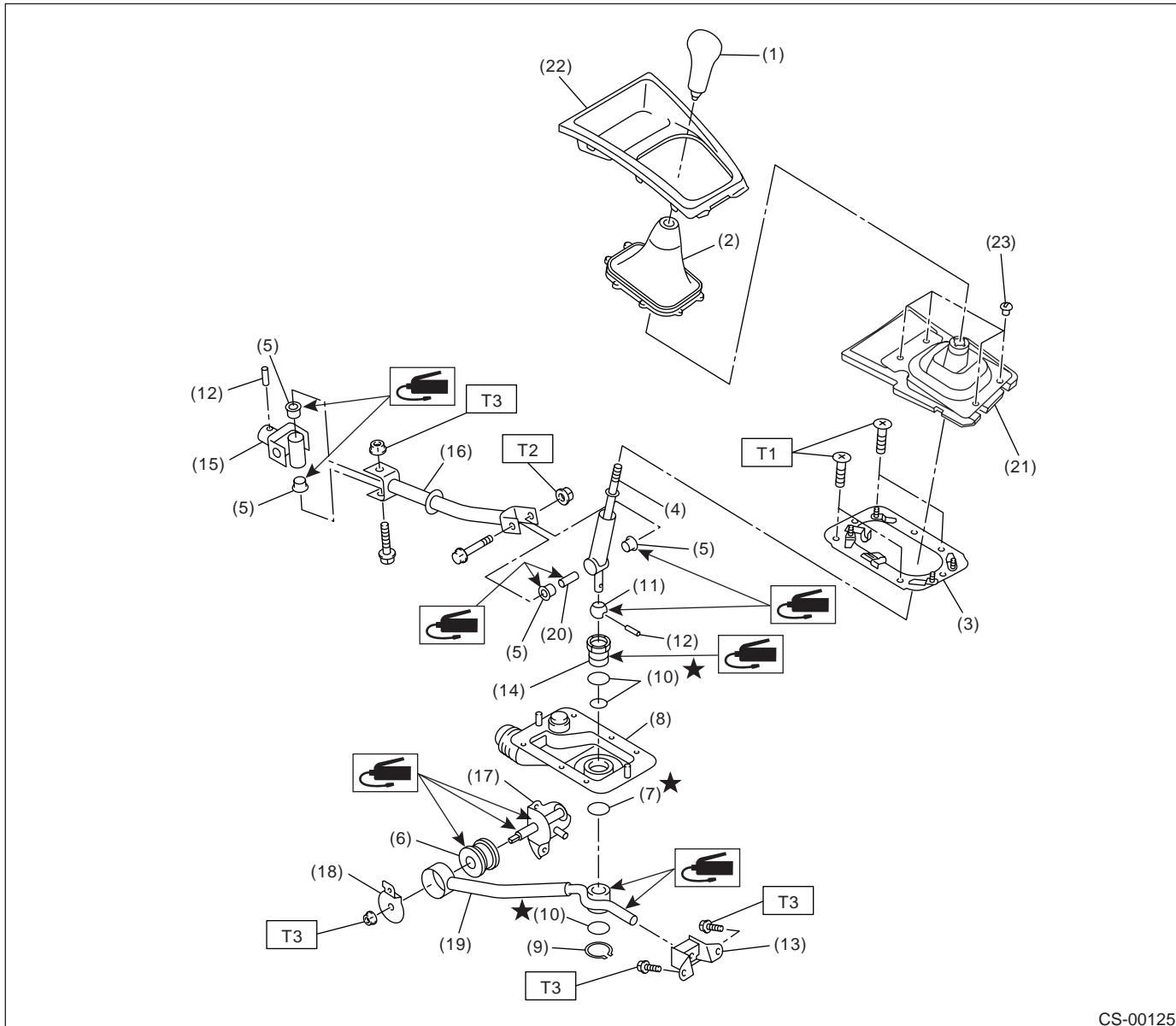
T4: 18 (1.8, 13.0)

CS-4

GENERAL DESCRIPTION

CONTROL SYSTEMS

3. MT GEAR SHIFT LEVER



CS-00125

- | | | |
|---------------------|---------------------|------------------------------|
| (1) Gear shift knob | (10) O-ring | (19) Stay |
| (2) Console boot | (11) Bushing A | (20) Spacer |
| (3) Plate COMPL | (12) Spring pin | (21) Boot and insulator ASSY |
| (4) Lever | (13) Cushion rubber | (22) Front cover |
| (5) Bushing | (14) Bushing B | (23) Clamp |
| (6) Bushing | (15) Joint | |
| (7) Lock wire | (16) Rod | |
| (8) Boot | (17) Bracket | |
| (9) Snap ring | (18) Washer | |

Tightening torque: N·m (kgf·m, ft·lb)

T1: 7.5 (0.76, 5.5)

T2: 12 (1.2, 8.7)

T3: 18 (1.8, 13.0)

CS-5

GENERAL DESCRIPTION

CONTROL SYSTEMS

C: CAUTION

- Wear working clothing, including a cap, protective goggles, and protective shoes during operation.
- Remove contamination including dirt and corrosion before removal, installation or disassembly.
- Keep the disassembled parts in order and protect them from dust or dirt.
- Before removal, installation or disassembly, be sure to clarify the failure. Avoid unnecessary removal, installation, disassembly, and replacement.
- Use SUBARU genuine grease etc. or the equivalent. Do not mix grease etc. with that of another grade or from other manufacturers.
- Be sure to tighten fasteners including bolts and nuts to the specified torque.
- Place shop jacks or safety stands at the specified points.
- Apply grease onto sliding or revolution surfaces before installation.
- Before installing O-rings or snap rings, apply sufficient amount of grease to avoid damage and deformation.
- Before securing a part on a vise, place cushioning material such as wood blocks, aluminum plate, or shop cloth between the part and the vise.
- Before disconnecting electrical connectors, be sure to disconnect the ground cable from battery.

CS-6

Vehicle-id:
SIE-id::C:CAUTION