

# IDENTIFICATION

*ID*

---

1. Identification .....	Page 2
-------------------------	-----------



# IDENTIFICATION

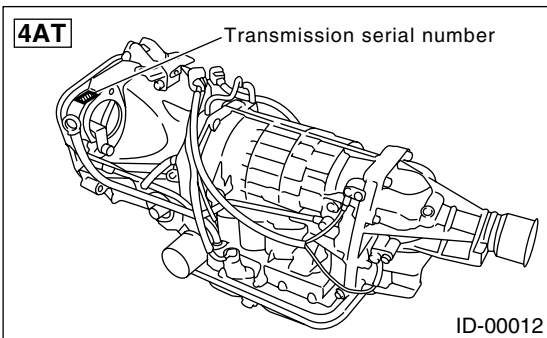
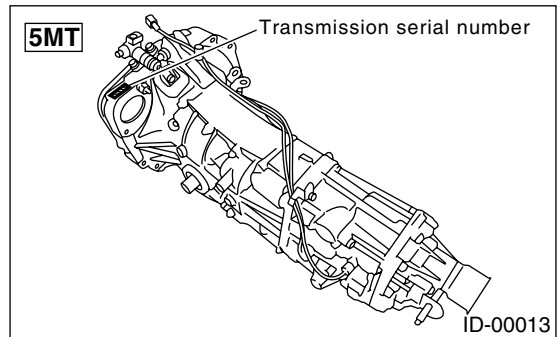
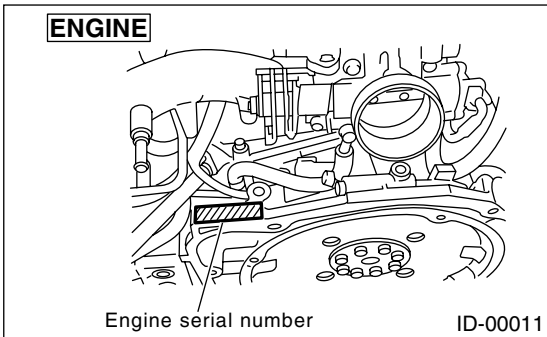
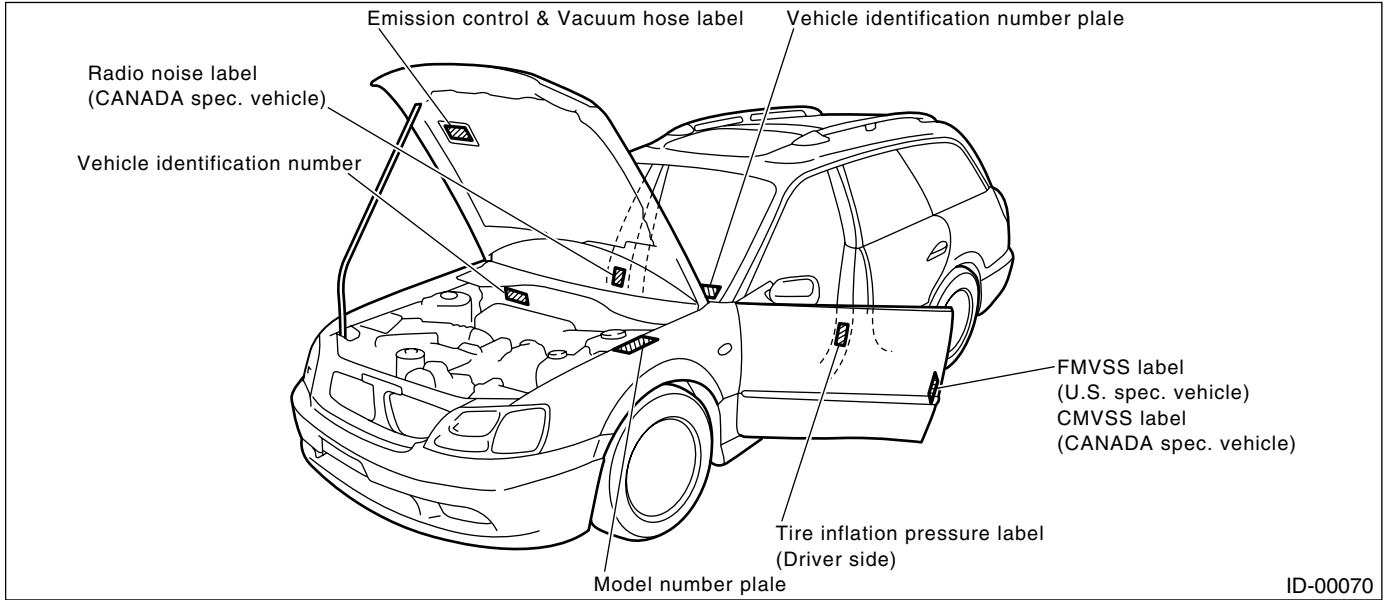
## IDENTIFICATION

### 1. Identification

#### A: IDENTIFICATION

##### 1. IDENTIFICATION NUMBER AND LABEL LOCATIONS

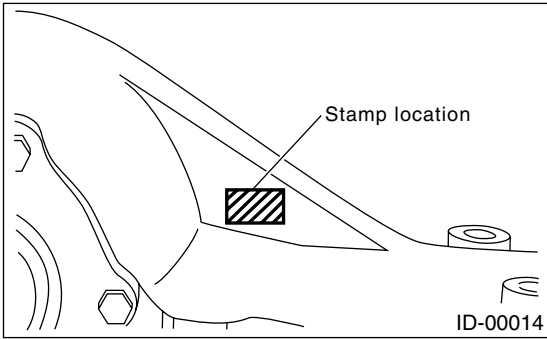
The VIN (Vehicle Identification Numbers) is used to classify the vehicle.  
Positioning of the plate label for identification



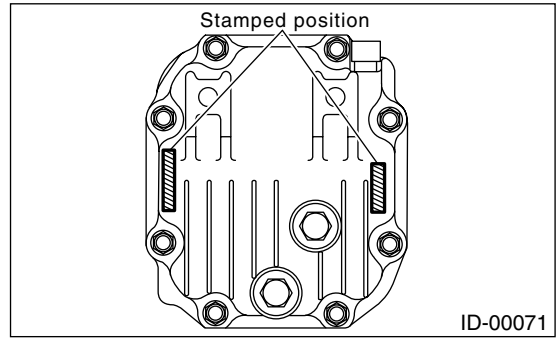
# IDENTIFICATION

IDENTIFICATION

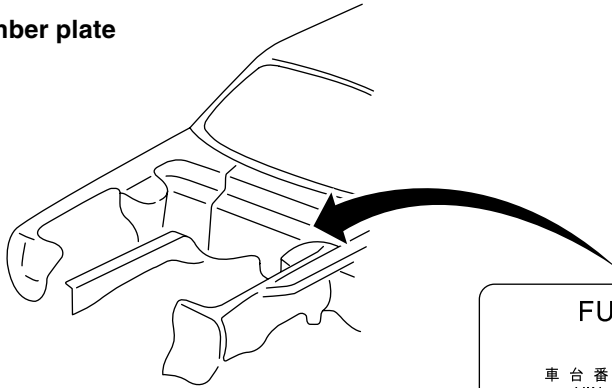
## Except L, L-S and PICKUP AT models



## L, L-S and PICKUP AT models



## Model number plate



FUJI HEAVY INDUSTRIES LTD.																	
型 式 <input type="text"/>																	
車台番号	4	S	3	B	E	6	3	5	X	3	7	2	0	0	0	0	1
VIN																	
○アプライトモデル	B	E	9	D	Y	3	J	○オプションコード	E	0						○	
applied model																	
オプションコード																	
エンジン型式	E	Z	3	0	D	A	X	C	B	B							
engine type																	
ミッション型式	T	Y	7	5	4	V	C	D	A	A							
transmission type																	
トリムコード	4	1	0														
trim code																	
外装飾コード	2	3	0														
color code																	
富士重工業株式会社																	

ID-00043

# IDENTIFICATION

## IDENTIFICATION

### 2. MEANING OF VIN

The meaning of the VIN is as follows:

- Legacy, OUTBACK

**[4S3BE635X47200001]**

The starting and ending brackets ( [ ] ) are stop marks.

Digits	Code	Meaning	Details
1 to 3	4S3	Manufacturer body area	Passenger car, SIA made, For US/Canada/Taiwan/Chile
4	B	Car line	Legacy/OUTBACK series
5	E	Body type	E: Sedan/OUTBACK Sedan H: Station Wagon/OUTBACK Wagon
6	6	Displacement	6: 2.5 L AWD 8: 3.0 L AWD
7	3	Grade	1: OUTBACK Sedan-6 cylinders S, OUTBACK Wagon-6 cylinders S 2: L-S 3: L 4: 2.5 GT 5: 2.5 GT LO 6: OUTBACK Wagon 7: OUTBACK Wagon-cold weather 8: OUTBACK Sedan-LTD, OUTBACK Wagon-LTD 9: OUTBACK Sedan-6 cylinders, OUTBACK Wagon-6 cylinders 0: OUTBACK-6 cylinders L.L.-Bean
8	5	Restraint	5: Manual belts, dual airbag 6: Manual belts, dual airbag, side airbag
9	X	Check digit	0 — 9 and X
10	4	Model year	4: 2004MY 5: 2005MY 6: 2006MY
11	7	Transmission type	5: Full-time AWD 4-speed AT-SS 6: Full-time AWD 5-speed MT 7: Full-time AWD 4-speed AT
12 to 17	200001	Manufacture number	From 200001: Sedan From 300001: Station Wagon From 600001: OUTBACK Wagon

# IDENTIFICATION

IDENTIFICATION

- PICKUP

**[4S4BT61CX46100001]**

The starting and ending brackets ( [ ] ) are stop marks.

Digits	Code	Meaning	Details
1 to 3	4S4	Manufacturer body area	MPV, SIA made, For US/Canada
4	B	Car line	Legacy series
5	T	Body type	T:PICKUP
6	6	Displacement	6: 2.5 L AWD
7	1	Grade	1:BAJA 2:BAJA-5 3:BAJA-13
8	C	GVWR class	C: Class C (4,001 — 5,000 lb)
9	X	Check digit	0 — 9 and X
10	4	Model year	4: 2004MY 5: 2005MY 6: 2006MY
11	6	Transmission type	5: Full-time AWD 4-speed AT-SS 6: Full-time AWD 5-speed MT 7: Full-time AWD 4-speed AT
12 to 17	100001	Manufacture number	From 100001: PICKUP

# IDENTIFICATION

## IDENTIFICATION

### 3. MODEL NUMBER PLATE

The model number plate indicates: the applied model, the option code, the trim code, the engine type, the transmission type, and the exterior color code. This information is helpful when placing orders for parts.

#### BE9EY3J

Digits	Code	Meaning	Details
1	B	Series	B: Legacy/OUTBACK
2	E	Body style	E: Sedan/OUTBACK Sedan H: Station Wagon/OUTBACK Wagon T: PICKUP
3	9	Engine displacement Drive system Suspension system	9: 2.5 L AWD E: 3.0 L AWD
4	D	Minor change	E: 2004MY (SIA made)
5	Y	Destination	Y: Left-hand drive for United States, Canada and Taiwan
6	3	Grade	3: L 4: OUTBACK Wagon 7: L-S 8: OUTBACK Sedan-6 cylinders 9: OUTBACK Sedan-LTD A: OUTBACK Wagon-cold weather B: OUTBACK Wagon-LTD C: OUTBACK Wagon-6 cylinders D: OUTBACK-6 cylinders L.L.-Bean E: BAJA F: BAJA S G: 2.5 GT H: 2.5 GT LO N: OUTBACK Wagon-6 cylinders S U: BAJA B
7	J	Transmission, fuel feed system	D: DOHC MPI Turbo MT center differential AWD E: DOHC MPI 4-speed AT J: SOHC MPI center differential AWD R: SOHC MPI 4-speed AT T: DOHC MPI Turbo 4-speed AT-SS L: SOHC MPI 4-speed AT-SS

The engine and transmission type are as follows:

- **Engine**

#### EZ30DAXCBB

Digits	Code	Meaning	Details
1 and 2	EZ	Engine type	EJ: 4 cylinders EZ: 6 cylinders
3 and 4	30	Displacement	25: 2.5 L 30: 3.0 L
5	D	Fuel feed system	1: D-MPI SOHC-A phase-2 or -3 5: MPI-Turbo phase-2 or -3 9: L-MPI SOHC-B phase-2 or -3 D: D-MPI DOHC 6 cylinders phase-3
6	A	Exhaust regulations	A: For states not using California emissions standards B: For USA C: For states using California emissions standards
7	X	Transmission	W: AWD MT X: AWD AT
8 to 10	FBB	Detailed specifications	Used when ordering parts. See the parts catalog for details.

# IDENTIFICATION

IDENTIFICATION

**• Transmission**

**TY754VCDAA**

Digits	Code	Meaning	Details
1	T	Transmission	T: Transmission
2	Y	Transmission type	Y: Full-time AWD MT center differential V: Full-time AWD AT VTD Z: Full-time AWD AT MPT
3 and 4	75	Classification	75: MT 1A, 1B: AT
5	4	Series	4: 5th Generation Legacy
6	V	Transmission specifications	V: Full-time AWD 5-speed MT with viscous coupling center differential single range Z: Full-time AWD 4-speed AT with MPT Y: Full-time AWD 4-speed AT with VTD
7	C	Mounted body	C: US 2.5 L SOHC H: US 2.5 L Turbo DOHC M: US 3.0 L DOHC
8 to 10	DAA	Detailed specifications	Used when ordering parts. See the parts catalog for details.

**• Rear differential 1**

**VA1REG (XJ)**

Digits	Code	Meaning	Details
1	V	For AWD	V: AWD
2	A	Type	A: A type
3	1	Hypoid gear diameter	1: 152 dia.
4	R	Installation position	R: Rear
5	E	Reduction gear ratio	E: 4.111 F: 4.444
6	G	Specification differences	G: Without LSD H: Viscous LSD

**• Rear differential 2**

**T1**

Code	Reduction gear ratio	LSD
T1	3.900	No
T2	4.111	No
JE	4.111	Viscous
CD	4.444	Viscous
J	4.111	Viscous
F	4.444	Viscous

# IDENTIFICATION

IDENTIFICATION

---

**MEMO:**