

# General Description

FUEL INJECTION (FUEL SYSTEMS)

---

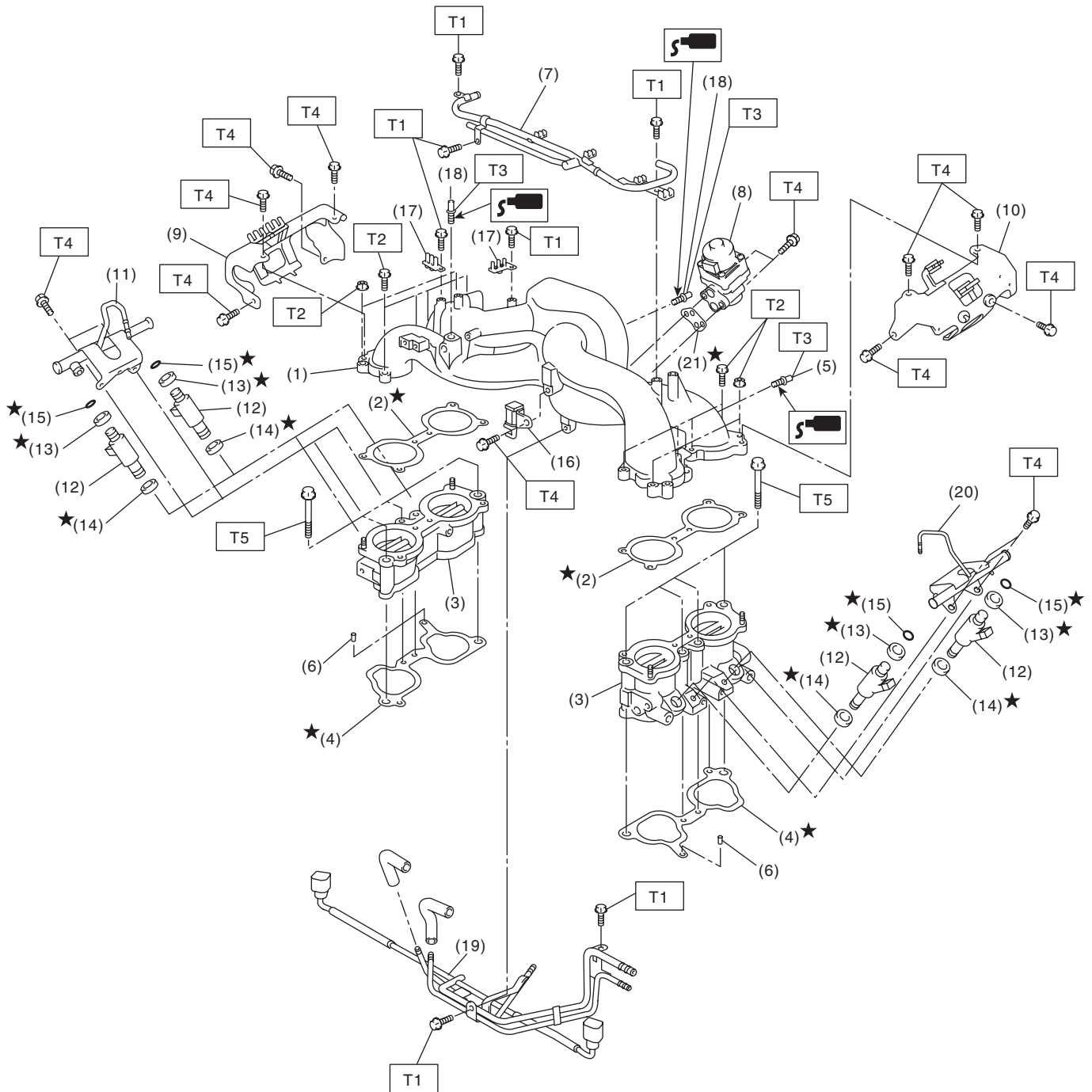
## 1. General Description

### A: SPECIFICATION

Contents		Specification
Fuel tank	Capacity	64 ℓ (16.9 US gal, 14.1 Imp gal)
	Install locations	Under rear seat
Fuel pump	Type	Impeller
	Shutoff discharge pressure	550 — 850 kPa (5.6 — 8.7 kg/cm <sup>2</sup> , 79.7 — 123.2 psi)
	Discharge rate	125 ℓ (33 US gal, 27.5 Imp gal)/h or more. [12V at 300 kPa (3.06 kg/cm <sup>2</sup> , 43.5 psi)]
Fuel filter		Intank type

### B: COMPONENT

#### 1. INTAKE MANIFOLD



FU-03199

# General Description

## FUEL INJECTION (FUEL SYSTEMS)

- |                             |                                   |                            |
|-----------------------------|-----------------------------------|----------------------------|
| (1) Intake manifold         | (11) Fuel injector pipe RH        | (20) Fuel injector pipe LH |
| (2) Gasket                  | (12) Fuel injector                | (21) Gasket                |
| (3) Intake manifold (Lower) | (13) O-ring                       |                            |
| (4) Gasket                  | (14) O-ring                       |                            |
| (5) Nipple                  | (15) O-ring                       |                            |
| (6) Guide pin               | (16) Purge control solenoid valve |                            |
| (7) PCV pipe                | (17) Plug cord holder             |                            |
| (8) EGR valve               | (18) Nipple                       |                            |
| (9) Fuel pipe protector RH  | (19) Fuel pipe ASSY               |                            |
| (10) Fuel pipe protector LH |                                   |                            |

**Tightening torque: N·m (kgf·m, ft·lb)**

**T1: 6.4 (0.65, 4.7)**

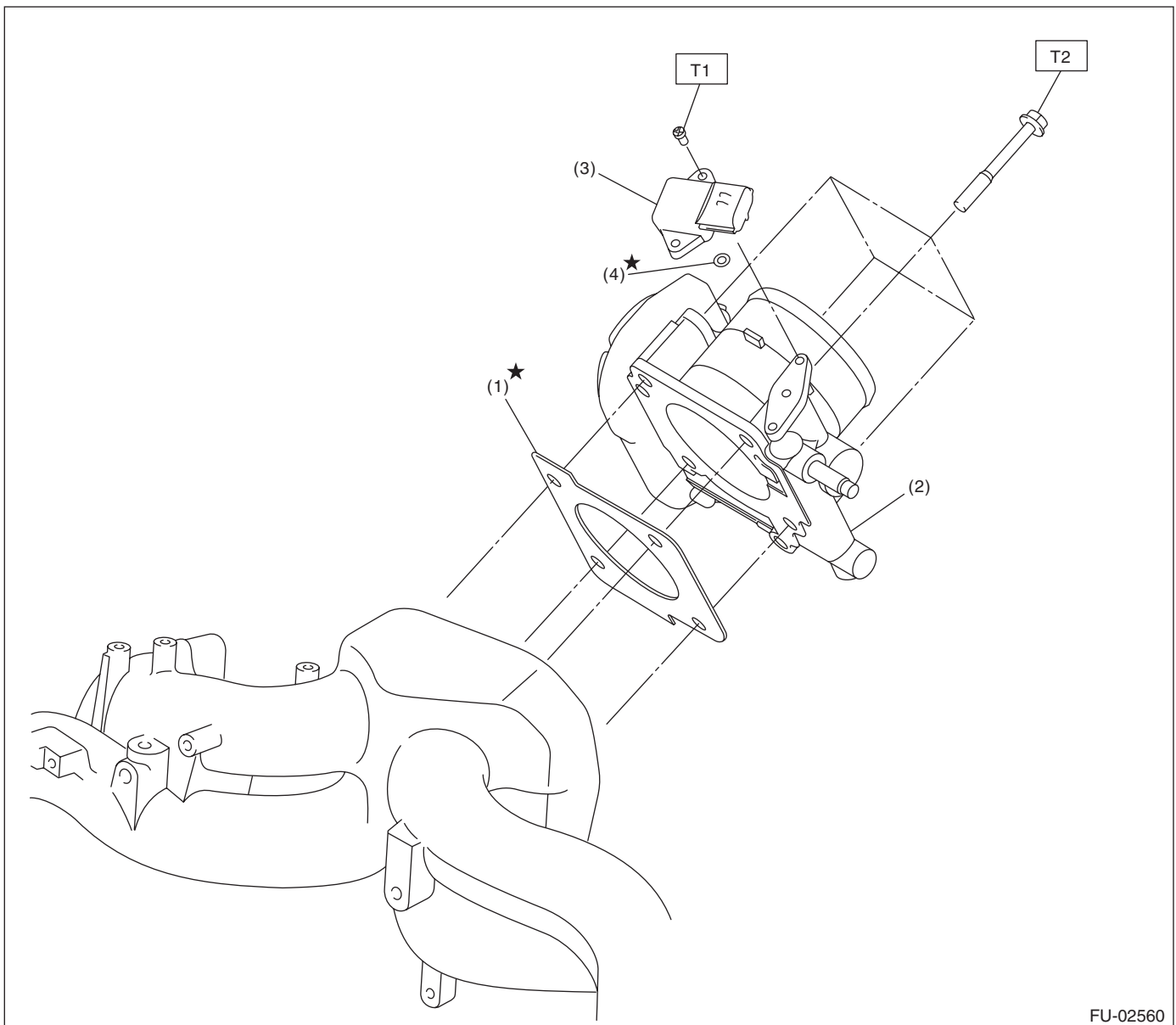
**T2: 8.75 (0.89, 6.5)**

**T3: 17 (1.7, 12.5)**

**T4: 19 (1.9, 14)**

**T5: 25 (2.5, 18)**

## 2. AIR INTAKE SYSTEM



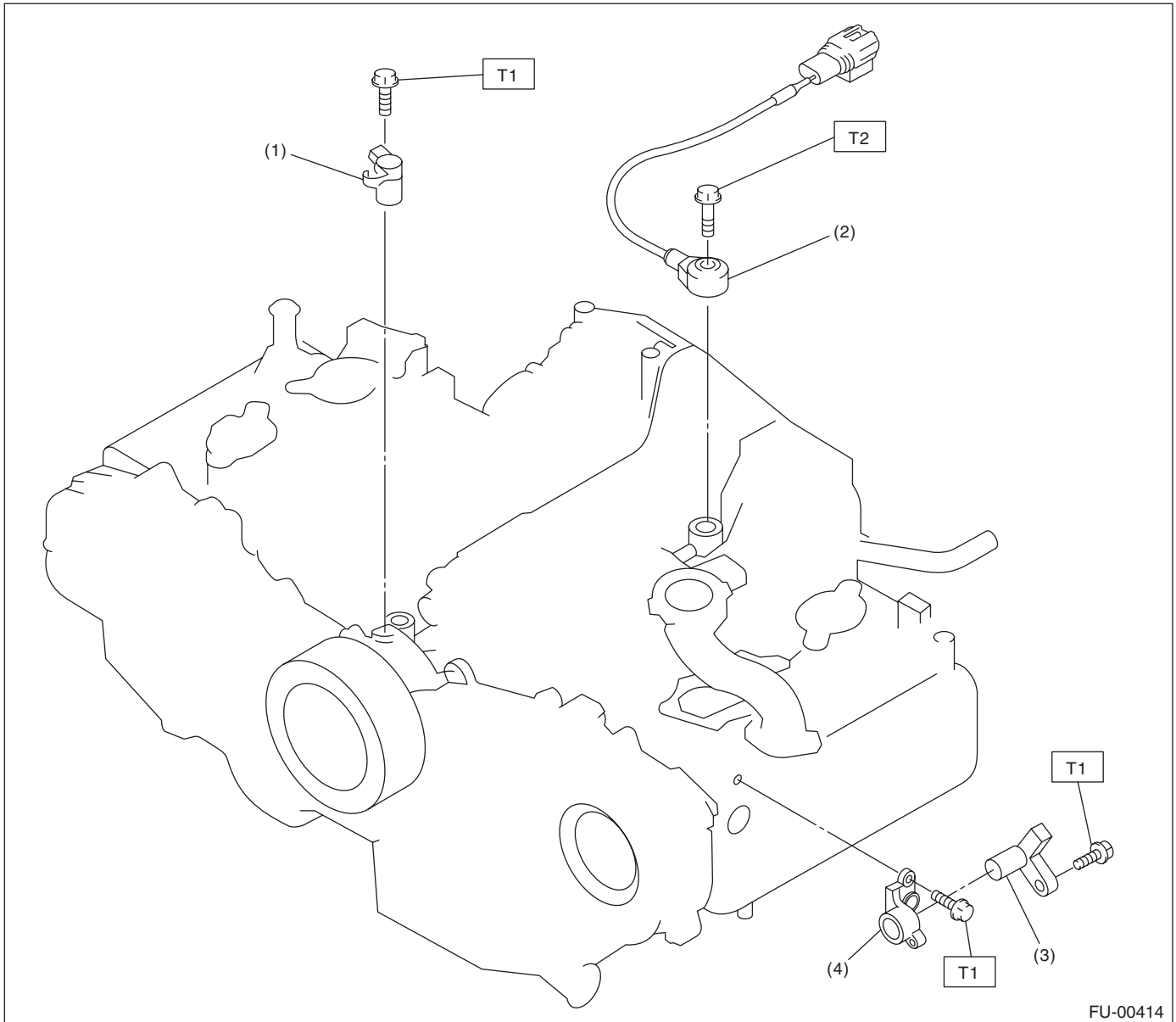
FU-02560

- |                   |                                       |  |
|-------------------|---------------------------------------|--|
| (1) Gasket        | (3) Manifold absolute pressure sensor | <b>Tightening torque: N·m (kgf·m, ft·lb)</b> |
| (2) Throttle body | (4) O-ring                            | <b>T1: 2.0 (0.20, 1.5)</b>                   |
|                   |                                       | <b>T2: 8 (0.8, 5.8)</b>                      |

# General Description

FUEL INJECTION (FUEL SYSTEMS)

## 3. CRANKSHAFT POSITION, CAMSHAFT POSITION AND KNOCK SENSORS



FU-00414

(1) Crankshaft position sensor

(3) Camshaft position sensor

**Tightening torque: N·m (kgf-m, ft-lb)**

(2) Knock sensor

(4) Camshaft position sensor support

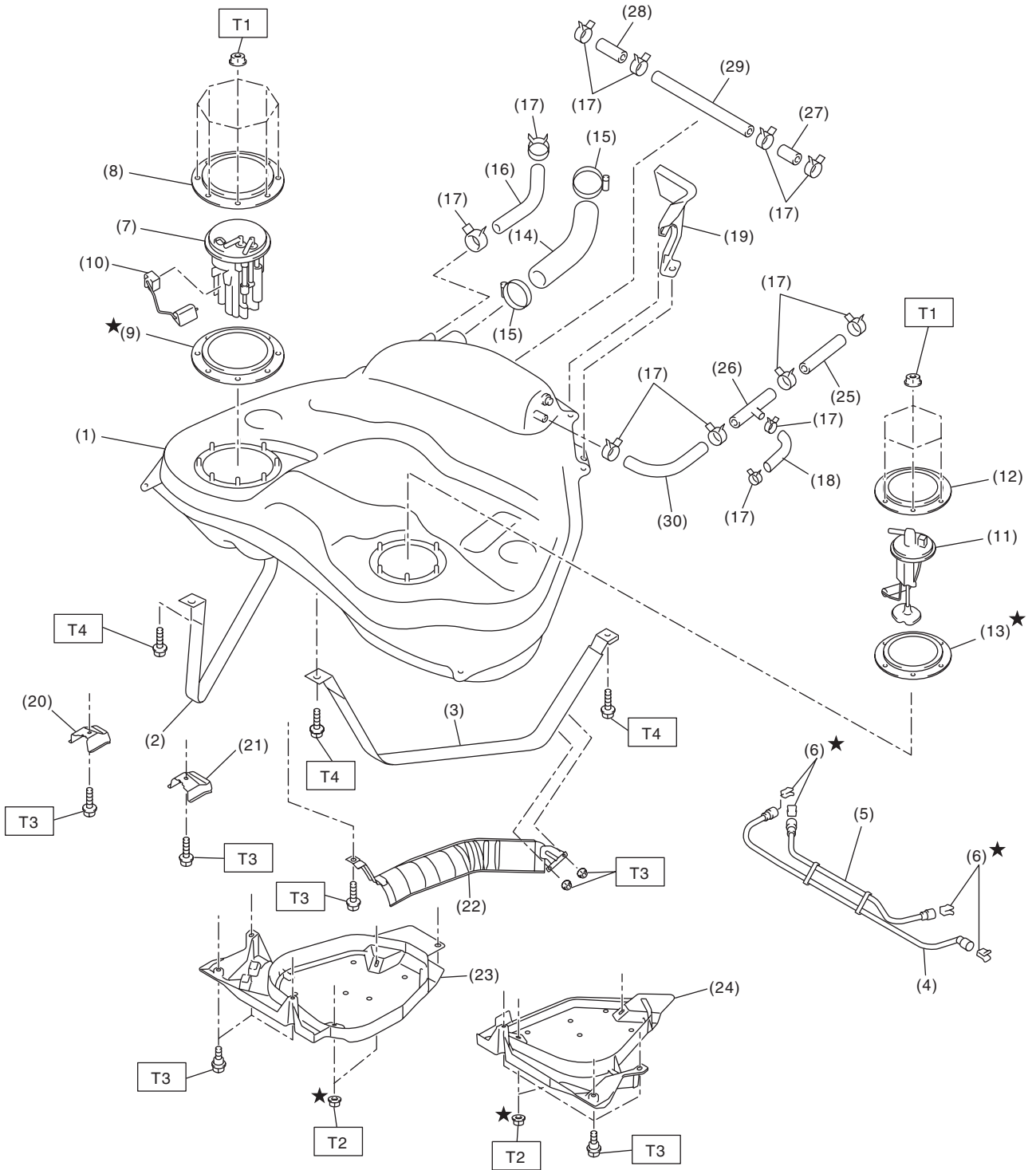
**T1: 6.4 (0.65, 4.7)**

**T2: 24 (2.4, 17.4)**

# General Description

## FUEL INJECTION (FUEL SYSTEMS)

### 4. FUEL TANK



FU-02827

# General Description

## FUEL INJECTION (FUEL SYSTEMS)

---

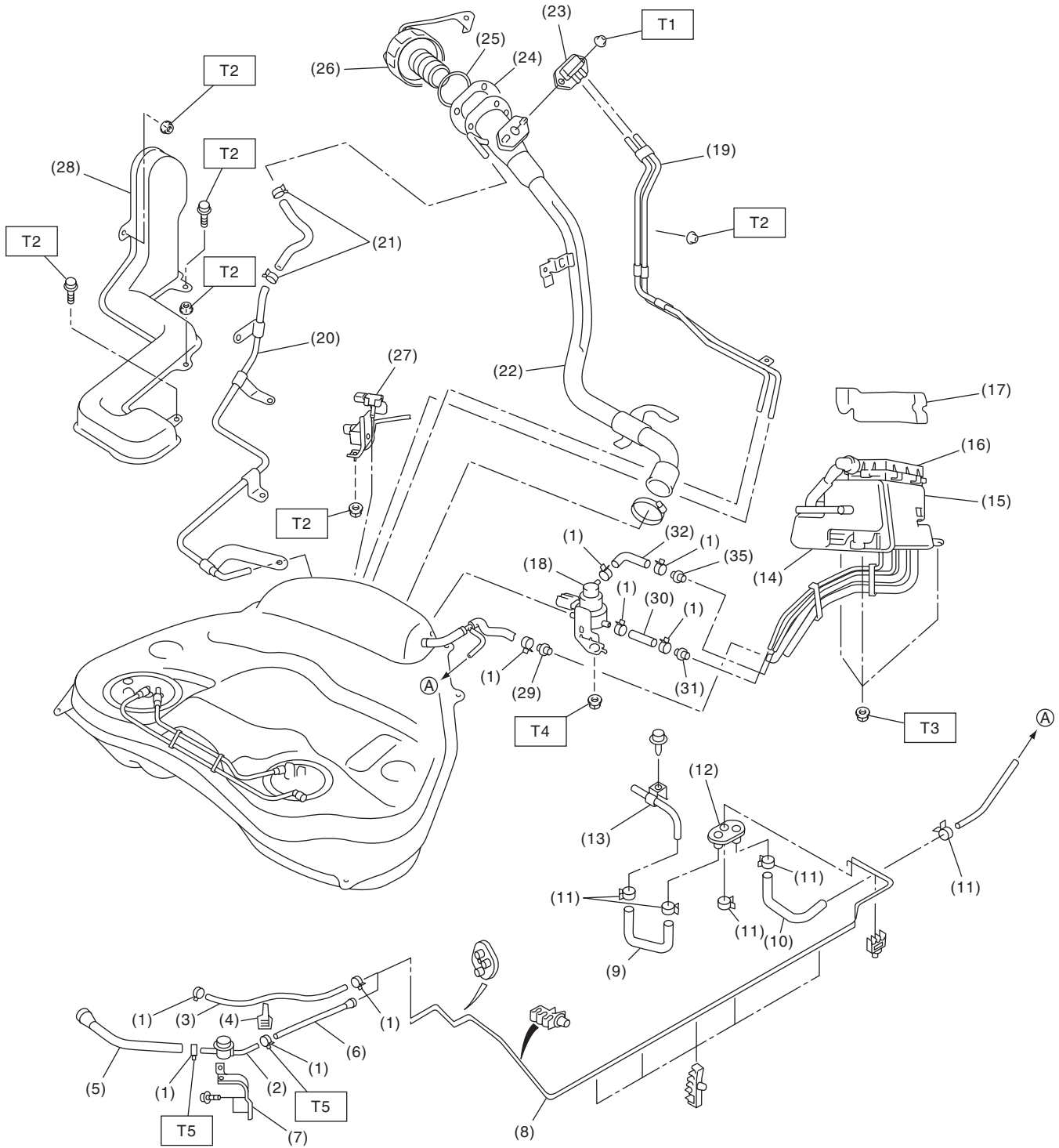
(1) Fuel tank	(13) Fuel sub level sensor gasket	(25) Evaporation hose B
(2) Fuel tank band RH	(14) Fuel filler hose	(26) Connector
(3) Fuel tank band LH	(15) Clamp	(27) Evaporation hose C
(4) Delivery tube	(16) Evaporation hose A	(28) Evaporation hose D
(5) Jet pump tube	(17) Clip	(29) Evaporation pipe
(6) Retainer	(18) Evaporation hose F	(30) Evaporation hose E
(7) Fuel pump ASSY	(19) Fuel tank protector LH (Rear)	
(8) Fuel pump upper plate	(20) Stopper RH	<b><i>Tightening torque: N-m (kgf-m, ft-lb)</i></b>
(9) Fuel pump gasket	(21) Stopper LH	<b><i>T1: 4.4 (0.45, 3.2)</i></b>
(10) Fuel level sensor	(22) Heat shield cover	<b><i>T2: 9 (0.9, 6.6)</i></b>
(11) Fuel sub level sensor	(23) Fuel tank protector RH (Front)	<b><i>T3: 17.5 (1.78, 12.9)</i></b>
(12) Fuel sub level sensor upper plate	(24) Fuel tank protector LH (Front)	<b><i>T4: 33 (3.4, 25)</i></b>

---

# General Description

## FUEL INJECTION (FUEL SYSTEMS)

### 5. FUEL LINE



FU-02828

# General Description

## FUEL INJECTION (FUEL SYSTEMS)

(1) Clamp	(14) Canister	(27) Fuel tank pressure sensor
(2) Fuel damper valve	(15) Drain Valve	(28) Evaporation pipe protector
(3) Evaporation hose A	(16) Drain filter	(29) Connector A
(4) Clip	(17) Canister protector	(30) Canister hose A
(5) Fuel delivery hose A	(18) Pressure control solenoid valve	(31) Connector B
(6) Fuel delivery hose B	(19) Evaporation pipe A	(32) Canister hose B
(7) Fuel damper valve bracket	(20) Evaporation pipe B	
(8) Fuel pipe ASSY	(21) Clip	
(9) Fuel delivery hose C	(22) Fuel filler pipe	
(10) Evaporation hose B	(23) Shut valve	
(11) Clamp	(24) Packing	
(12) Grommet	(25) Ring	
(13) Fuel pipe ASSY	(26) Fuel filler cap	

---

### **Tightening torque: N-m (kgf-m, ft-lb)**

**T1: 4.4 (0.45, 3.2)**

**T2: 7.5 (0.76, 5.5)**

**T3: 1.25 (0.13, 0.94)**

**T4: 17.6 (1.8, 13)**

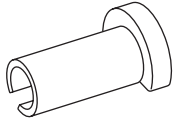
**T5: 1.25 (0.13, 0.94)**

---

## C: CAUTION

- Wear appropriate work clothing, including a cap, protective goggles and protective shoes when performing any work.
- Remove contamination including dirt and corrosion before removal, installation or disassembly.
- Keep the disassembled parts in order and protect them from dust and dirt.
- Before removal, installation or disassembly, be sure to clarify the failure. Avoid unnecessary removal, installation, disassembly and replacement.
- Vehicle components are extremely hot after driving. Be wary of receiving burns from heated parts.
- Be sure to tighten fasteners including bolts and nuts to the specified torque.
- Place shop jacks or rigid racks at the specified points.
- Before disconnecting connectors of sensors or units, be sure to disconnect the ground cable from the battery.
- Place "NO FIRE" signs near the working area.
- Be careful not to spill fuel.

## D: PREPARATION TOOL

ILLUSTRATION	TOOL NUMBER	DESCRIPTION	REMARKS
 <p>ST42099AE000</p>	42099AE000	CONNECTOR REMOVER	Used for removing the quick connector.