

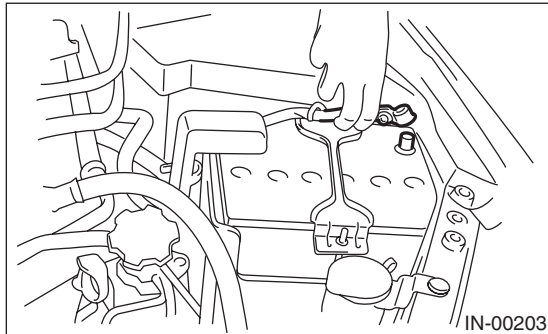
Front Exhaust Pipe

EXHAUST

2. Front Exhaust Pipe

A: REMOVAL

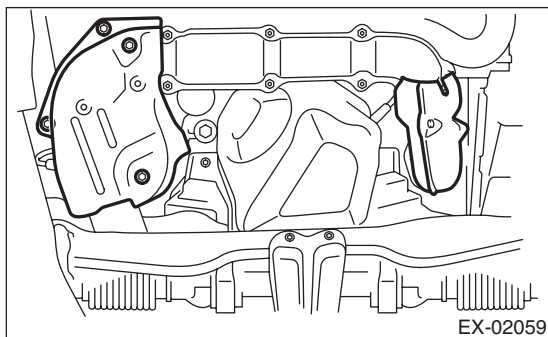
1) Disconnect the ground cable from battery.



2) Remove the front oxygen (A/F) sensor.
<Ref. to FU(H4DOTC)-34, REMOVAL, Front Oxygen (A/F) Sensor.>

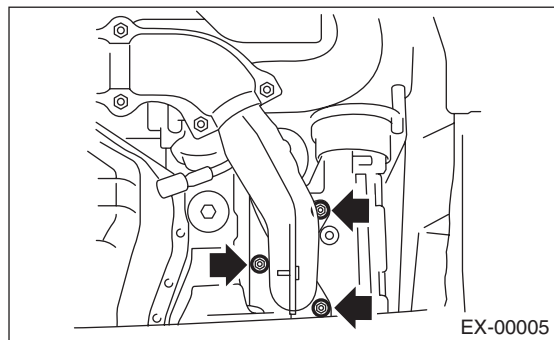
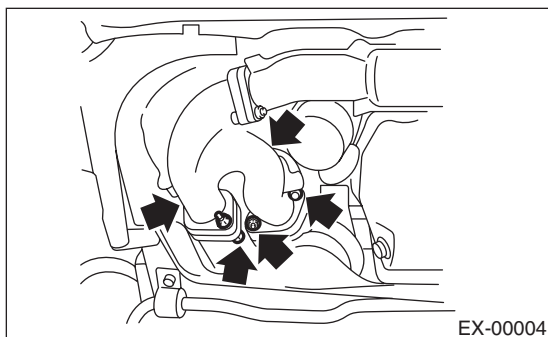
3) Remove the under cover.

4) Remove the exhaust manifold lower cover (RH) and the exhaust manifold lower cover (LH).



5) Remove the nuts which hold front exhaust pipe assembly onto turbocharger joint pipe.

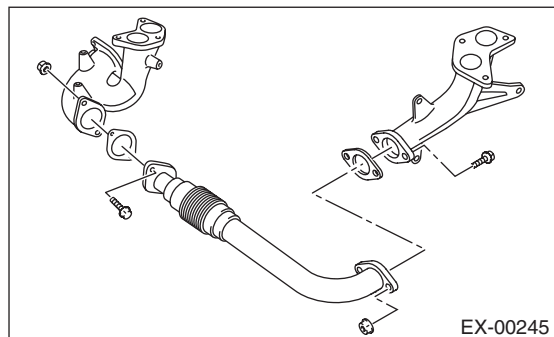
6) While holding the front exhaust pipe assembly with one hand, remove the nuts which hold the front exhaust pipe assembly to cylinder head exhaust port.



7) Remove the front exhaust pipe assembly.

8) Remove the covers from exhaust manifold and front exhaust pipe.

9) Separate the front exhaust pipe from exhaust manifolds.



B: INSTALLATION

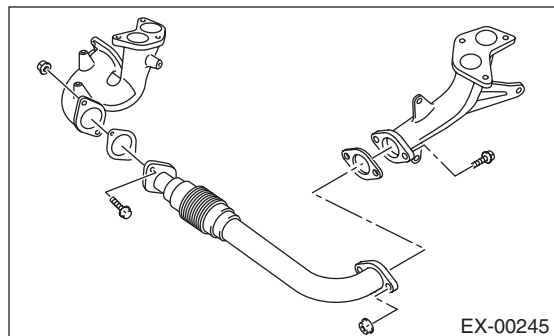
NOTE:

Replace with a new gasket.

1) Install the front exhaust pipe and the exhaust manifold.

Tightening torque:

35 N·m (3.6 kgf-m, 26.0 ft-lb)



2) Install the front exhaust pipe cover.

Tightening torque:

7.5 N·m (0.8 kgf-m, 5.5 ft-lb)

3) Install the exhaust manifold upper cover (RH).

Tightening torque:

19 N·m (1.9 kgf-m, 13.7 ft-lb)

4) Install the front exhaust pipe assembly.

Tightening torque:

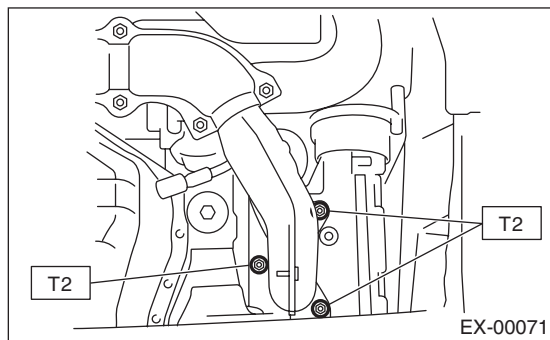
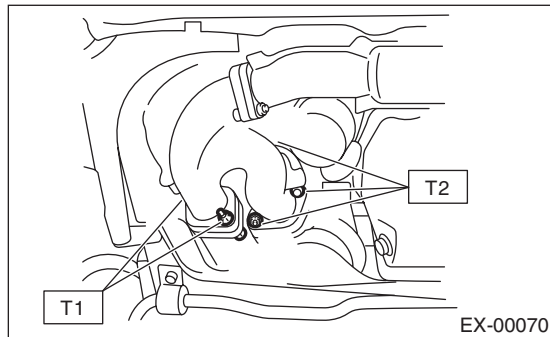
35 N·m (3.6 kgf-m, 26.0 ft-lb)

5) Connect the exhaust manifold (RH) to turbo-charger joint pipe.

Tightening torque:

T1: 35 N·m (3.6 kgf-m, 26.0 ft-lb)

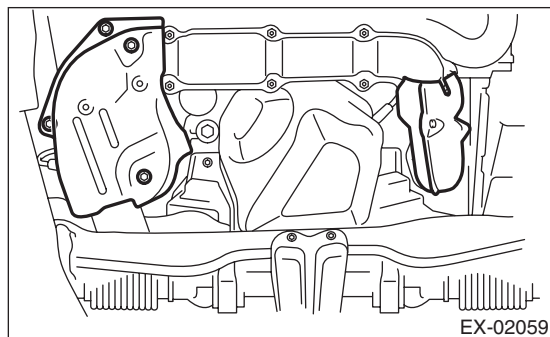
T2: 40 N·m (4.0 kgf-m, 28.9 ft-lb)



6) Install the exhaust manifold lower cover (RH) and the exhaust manifold lower cover (LH).

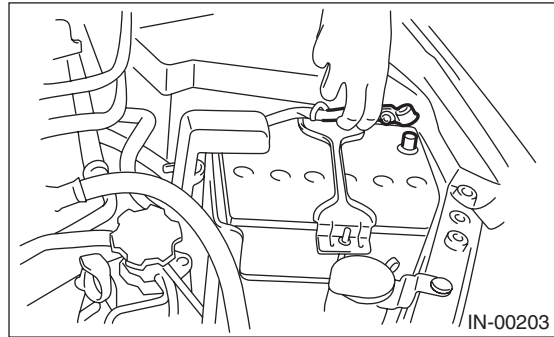
Tightening torque:

19 N·m (1.9 kgf-m, 13.7 ft-lb)



7) Install the front oxygen (A/F) sensor.
 <Ref. to FU(H4DOTC)-34, INSTALLATION, Front Oxygen (A/F) Sensor.>
 8) Install the under cover.

9) Connect the battery ground cable to the battery.



C: INSPECTION

- 1) Check the connections and welds for exhaust leaks.
- 2) Make sure there are no holes or rusting.